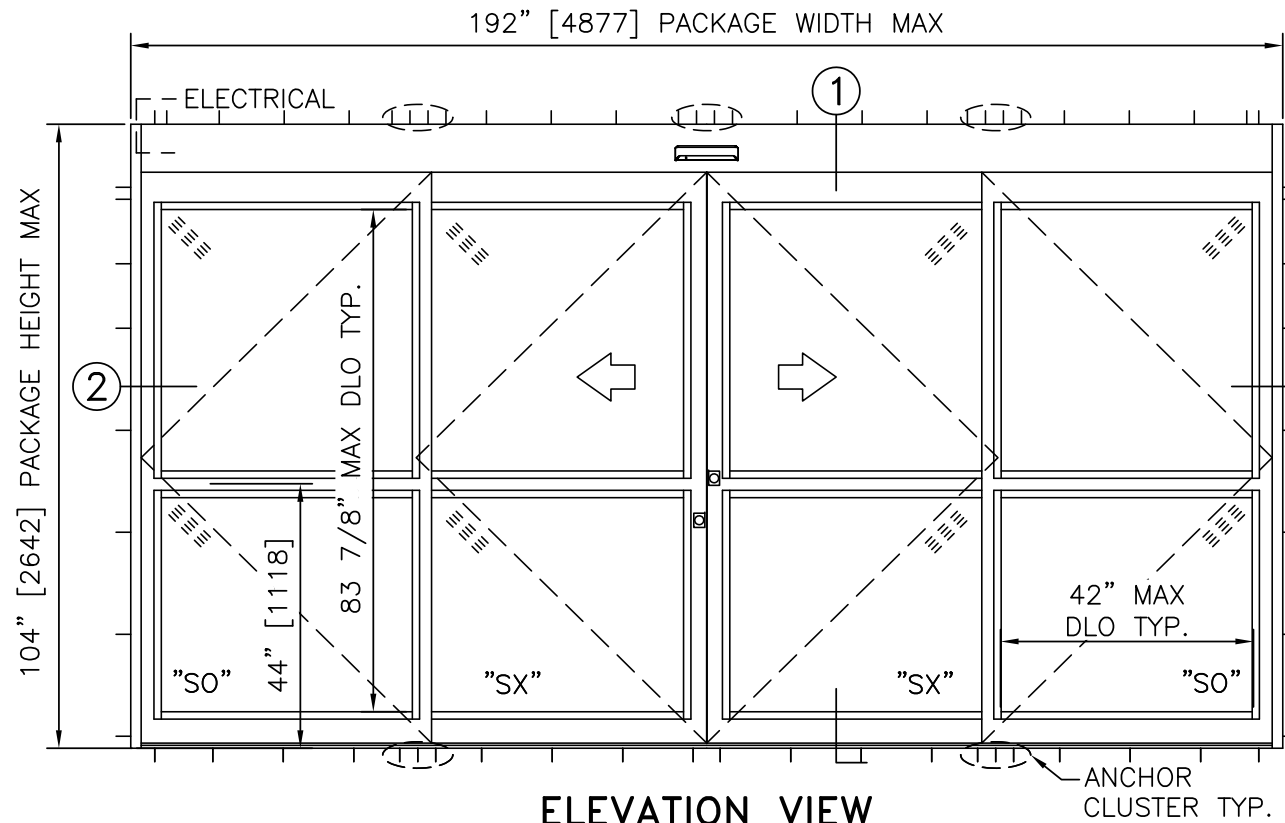


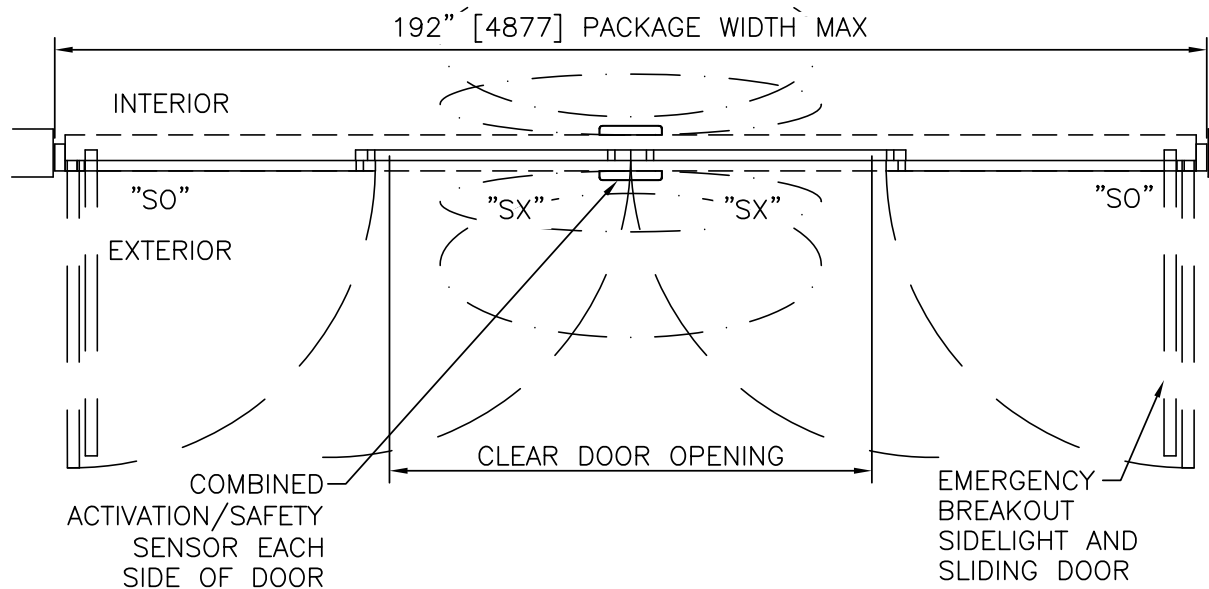
**STANLEY**  
Access Technologies

**DURA-STORM**  
**3000**  
**"LEVEL E"**  
**IMPACT SERIES**

BI-PARTING	
PROJECT INFORMATION	
PROJECT NAME:	
LOCATION:	
DOOR NUMBER(S):	
DATE:	SHEET: OF

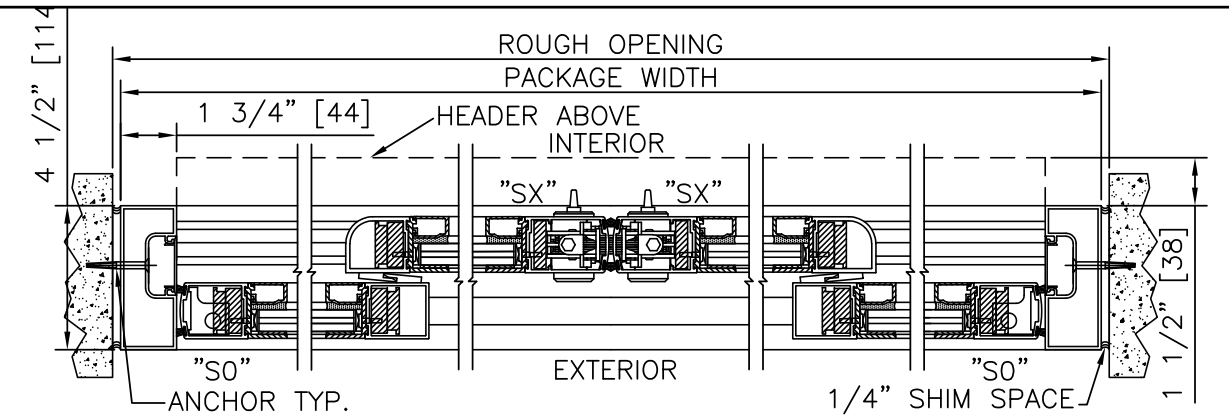


**ELEVATION VIEW**  
SCALE: 3/8" = 1'-0"

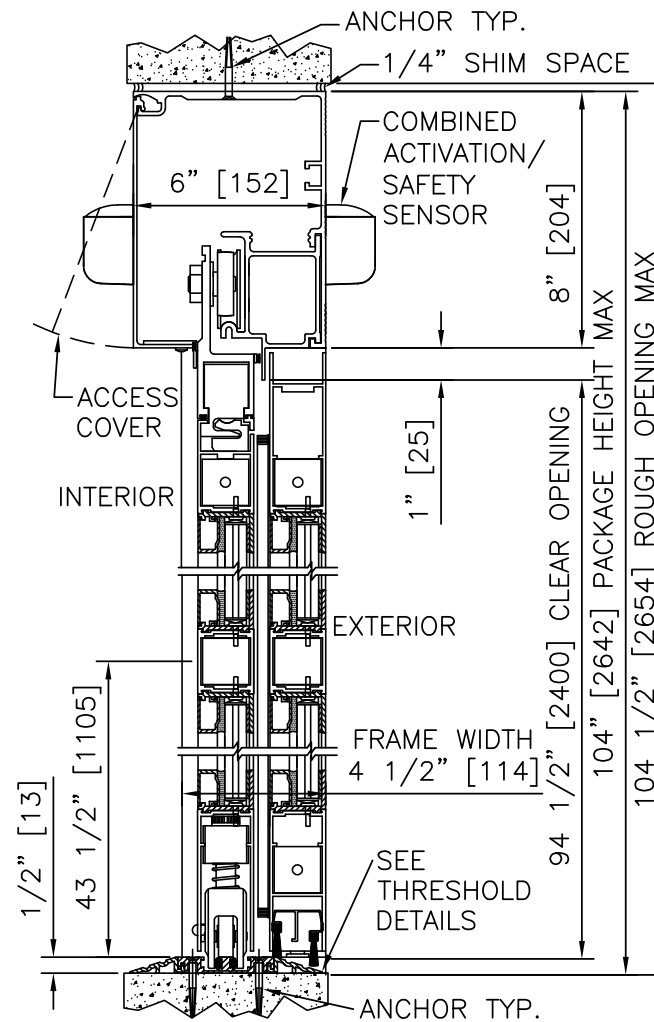


**NOTES**

- ELECTRICAL REQUIREMENTS: 120 VAC, 5 AMP MIN TO POWER OPERATOR BY ELECTRICAL CONTRACTOR.
- ROUGH OPENING SHALL PROVIDE 1/4" [6] SHIM SPACE ON SIDES AND TOP OF PACKAGE.
- ACTIVATION AND SAFETY ZONES ARE FOR REFERENCE ONLY; SEE ANSI/BHMA A156.10 FOR DETAILED REQUIREMENTS.
- 3-POINT LOCKING STANDARD, 2-POINT LOCKING WITH PANIC RELEASE OPTIONAL. ELECTRIC SOLENOID LOCK MAY BE ADDED FOR ACCESS CONTROL.
- ENTRANCE TO RECEIVE APPROVED 5/8" [16] LAMINATED GLASS, AND DRY/WET GLAZING.
- STANDARD STILES, BOTTOM RAILS AND MUNTINS SHOWN; MEDIUM STILES, BOTTOM RAILS TO 10" [254], AND 4 1/4" [108] MUNTINS AVAILABLE.
- PRODUCT SHALL BE MANUFACTURED AND INSTALLED IN ACCORDANCE WITH PRODUCT APPROVALS; SEE MIAMI-DADE COUNTY NOTICE OF ACCEPTANCE OR FLORIDA BUILDING CODE APPROVAL
- SEE SPECIFICATIONS FOR ADDITIONAL INFORMATION.



**HORIZONTAL SECTION**  
SCALE: 2" = 1'-0"



**VERTICAL SECTION**  
SCALE: 2" = 1'-0"

**BI-PARTING FORMULAS - NARROW STILE**  
 PACKAGE WIDTH = 2 X CLEAR DOOR OPENING + 26.50"  
 CLEAR DOOR OPENING = 1/2 PACKAGE WIDTH - 13.25"  
 EMERGENCY BREAKOUT WIDTH = PACKAGE WIDTH - 14.50"  
 SX DOOR PANEL WIDTH = 1/4 PACKAGE WIDTH - 0.53"  
 SO DOOR PANEL WIDTH = 1/4 PACKAGE WIDTH + 0.16"

**BI-PARTING FORMULAS - MEDIUM STILE**  
 PACKAGE WIDTH = 2 X CLEAR DOOR OPENING + 35.25"  
 CLEAR DOOR OPENING = 1/2 PACKAGE WIDTH - 17.63"  
 EMERGENCY BREAKOUT WIDTH = PACKAGE WIDTH - 17.5"  
 SX DOOR PANEL WIDTH = 1/2 PACKAGE WIDTH + 1.44"  
 SO DOOR PANEL WIDTH = 1/2 PACKAGE WIDTH + 1.44"

**PRODUCT OPTIONS**

- FINISH**
- ANODIZED CLEAR CL2
  - ANODIZED DK BRONZE
  - CUSTOM
- LOCKING**
- 5-POINT
  - 4-POINT W/ PANIC RELEASE
  - ELECTRIC SOLENOID LOCK
- STILES**
- NARROW  MEDIUM
- MUNTINS**
- 2"  4 1/4"
  - NONE
- JAMBS**
- 4 1/2"  6"
- BOTTOM RAILS**
- STANDARD 4"
  - OPTIONAL 6" 8" 10"
- THRESHOLDS**
- SQ/BVL (EXT)  SQ/BVL (INT)
  - DBL BVL  RECESSED
- ACTIVATION/SAFETY**
- 2 COMBINED ACTIVATION/SAFETY SENSORS
- OTHER OPTIONS**
- ROTARY CTRL SWITCH  KEYED
  - UNINTERRUPTIBLE POWER SUPPLY
  - FLY OPEN BOX
  - WIND DAMPERS
  - ALARM CONTACTS

MAX. PACKAGE DIMENSIONS (NARROW STILE)				
PACKAGE WIDTH	NOMINAL CLEAR DOOR OPENING	SO DOOR PANEL NOMINAL WIDTH	SO DOOR PANEL NOMINAL WIDTH	EMERGENCY BREAKOUT NOM. WIDTH
192"	82.3"	48.5"	48.1"	177.5"

DESIGN RATINGS	
MISSILE IMPACT RATING	
<input checked="" type="checkbox"/>	LARGE MISSILE IMPACT
<input checked="" type="checkbox"/>	RISK CAT IV, 80 FT/S, "LEVEL E"
DESIGN PRESSURE RATING (PSF [Pa])	
POSITIVE	80 PSF [3830 Pa]
NEGATIVE	80 PSF [3830 Pa]

**DURA-STORM**  
**3000**  
**"LEVEL E"**  
**IMPACT SERIES**

**STANLEY**  
Access Technologies

**DURA-STORM  
3000  
"LEVEL E"  
IMPACT SERIES**

BI-PARTING

PROJECT INFORMATION

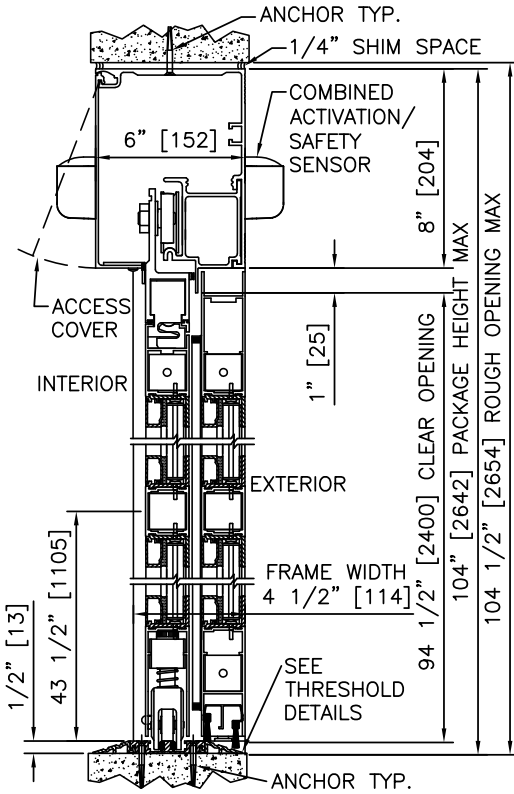
PROJECT NAME:

LOCATION:

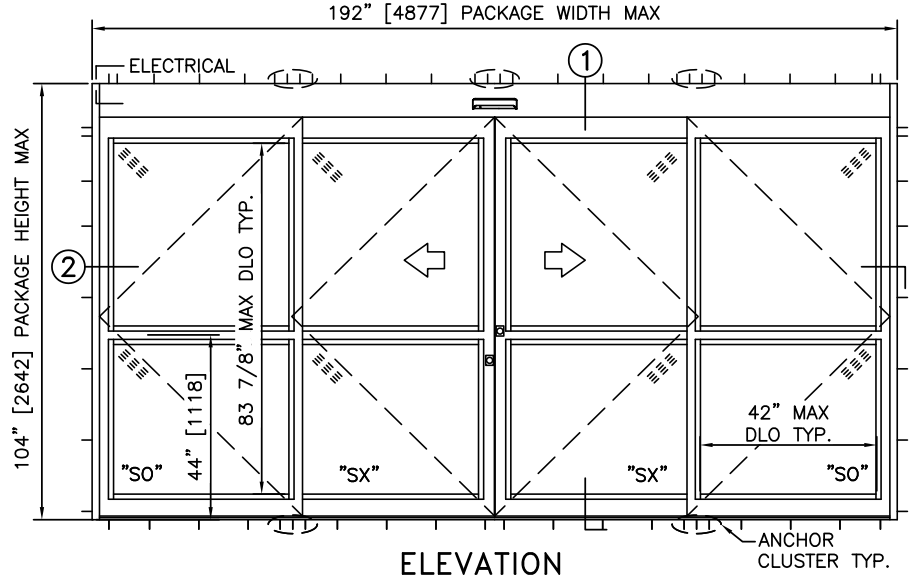
DOOR NUMBER(S):

DATE:

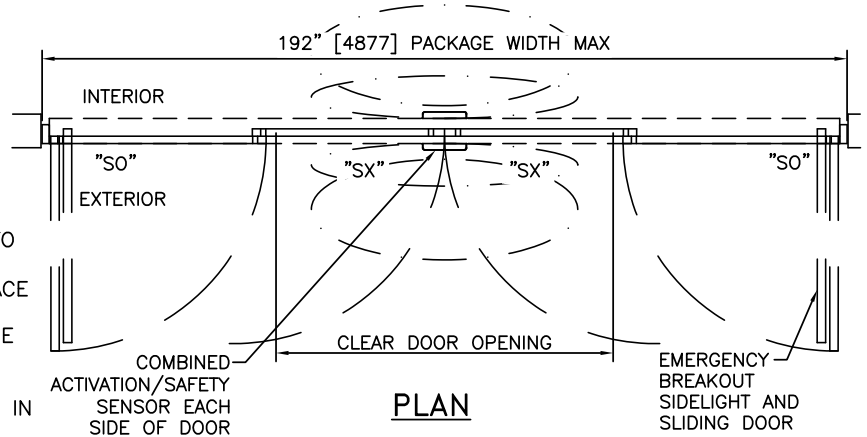
SHEET: OF



1 VERTICAL SECTION



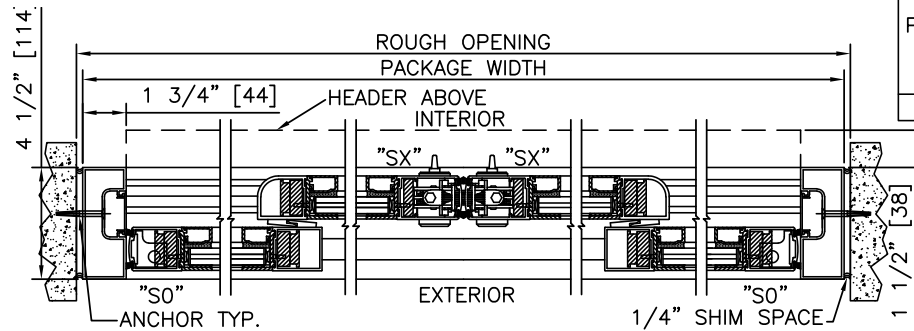
ELEVATION



PLAN

NOTES

1. ELECTRICAL REQUIREMENTS: 120 VAC, 5 AMP MIN TO POWER OPERATOR BY ELECTRICAL CONTRACTOR.
2. ROUGH OPENING SHALL PROVIDE 1/4"[6] SHIM SPACE ON SIDES AND TOP OF PACKAGE.
3. ACTIVATION AND SAFETY ZONES ARE FOR REFERENCE ONLY; SEE ANSI/BHMA A156.10 FOR DETAILED REQUIREMENTS.
4. PRODUCT SHALL BE MANUFACTURED AND INSTALLED IN ACCORDANCE WITH PRODUCT APPROVALS; SEE MIAMI-DADE COUNTY NOTICE OF ACCEPTANCE OR FLORIDA BUILDING CODE APPROVAL
5. SEE SPECIFICATIONS FOR ADDITIONAL INFORMATION.



2 HORIZONTAL SECTION

MAX. PACKAGE DIMENSIONS (NARROW STILE)				
PACKAGE WIDTH	NOMINAL CLEAR DOOR OPENING	SX DOOR PANEL NOMINAL WIDTH	SO DOOR PANEL NOMINAL WIDTH	EMERGENCY BREAKOUT NOM. WIDTH
192"	82.3"	48.5"	48.1"	177.5"

DESIGN RATINGS	
MISSILE IMPACT RATING	
<input checked="" type="checkbox"/>	LARGE MISSILE IMPACT
<input checked="" type="checkbox"/>	RISK CAT IV, 80 FT/S, "LEVEL E"
DESIGN PRESSURE RATING (PSF[Pa])	
POSITIVE	80 PSF [3830 Pa]
NEGATIVE	80 PSF [3830 Pa]

**DURA-STORM  
3000  
"LEVEL E"  
IMPACT SERIES**

BI-PARTING WITH PANIC RELEASE

PROJECT INFORMATION

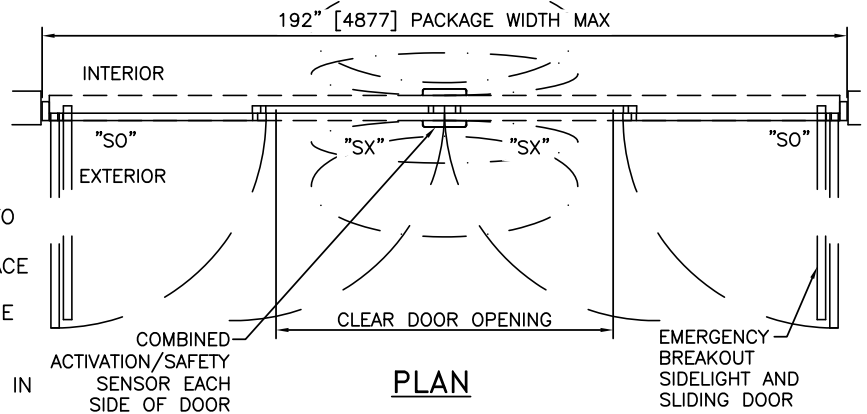
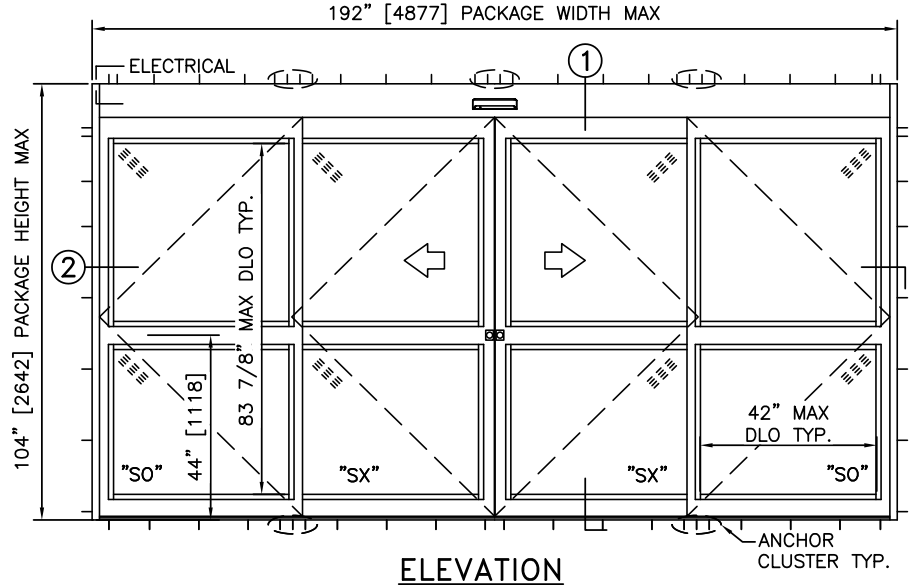
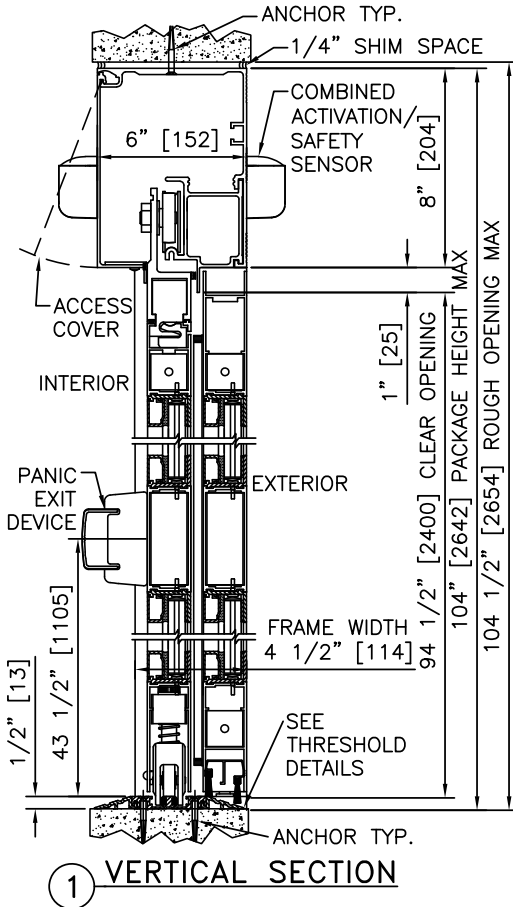
PROJECT NAME:

LOCATION:

DOOR NUMBER(S):

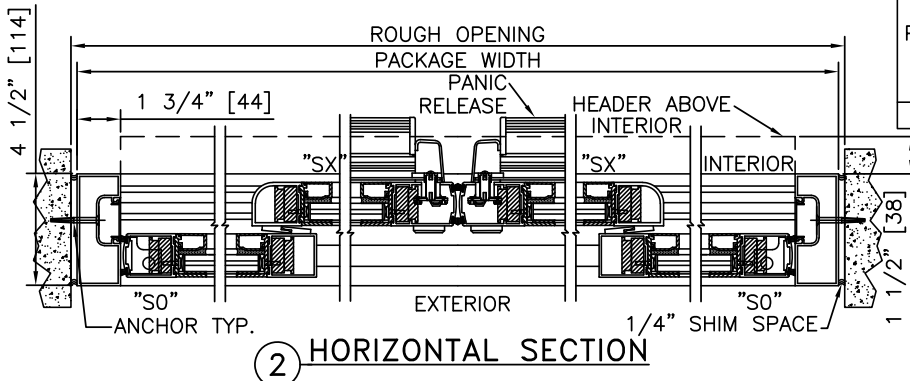
DATE:

SHEET: OF



**NOTES**

1. ELECTRICAL REQUIREMENTS: 120 VAC, 5 AMP MIN TO POWER OPERATOR BY ELECTRICAL CONTRACTOR.
2. ROUGH OPENING SHALL PROVIDE 1/4"[6] SHIM SPACE ON SIDES AND TOP OF PACKAGE.
3. ACTIVATION AND SAFETY ZONES ARE FOR REFERENCE ONLY; SEE ANSI/BHMA A156.10 FOR DETAILED REQUIREMENTS.
4. PRODUCT SHALL BE MANUFACTURED AND INSTALLED IN ACCORDANCE WITH PRODUCT APPROVALS; SEE MIAMI-DADE COUNTY NOTICE OF ACCEPTANCE OR FLORIDA BUILDING CODE APPROVAL
5. SEE SPECIFICATIONS FOR ADDITIONAL INFORMATION.



MAX. PACKAGE DIMENSIONS (NARROW STILE)				
PACKAGE WIDTH	NOMINAL CLEAR DOOR OPENING	SX DOOR PANEL NOMINAL WIDTH	SO DOOR PANEL NOMINAL WIDTH	EMERGENCY BREAKOUT NOM. WIDTH
192"	82.3"	48.5"	48.1"	177.5"

DESIGN RATINGS	
MISSILE IMPACT RATING	
<input checked="" type="checkbox"/>	LARGE MISSILE IMPACT
<input checked="" type="checkbox"/>	RISK CAT IV, 80 FT/S, "LEVEL E"
DESIGN PRESSURE RATING (PSF[Pa])	
POSITIVE	80 PSF [3830 Pa]
NEGATIVE	80 PSF [3830 Pa]

**DURA-STORM  
3000  
"LEVEL E"  
IMPACT SERIES**

BI-PARTING WITH AUTOMATIC LOCKING

PROJECT INFORMATION

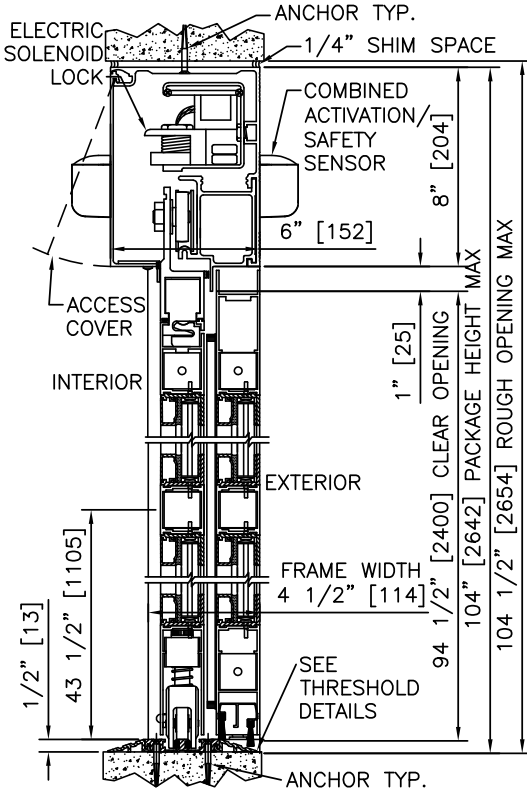
PROJECT NAME:

LOCATION:

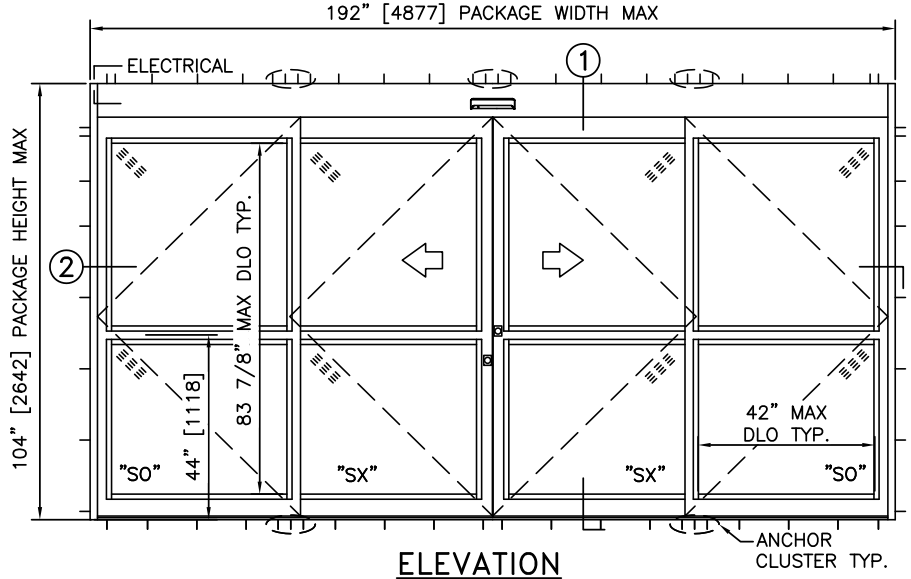
DOOR NUMBER(S):

DATE:

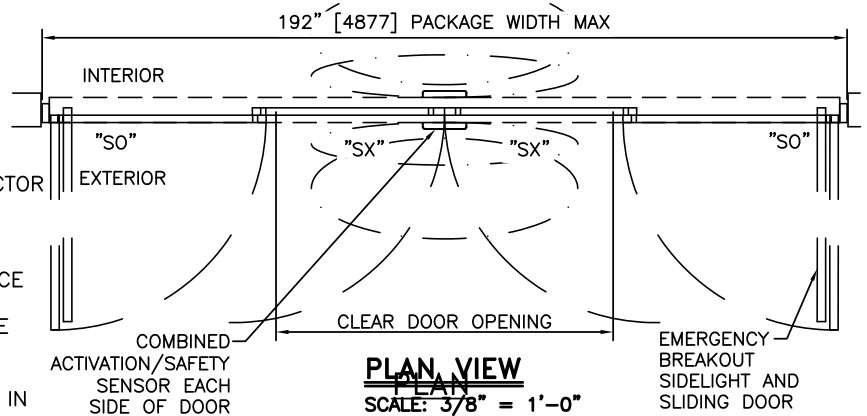
SHEET: OF



1 VERTICAL SECTION



ELEVATION



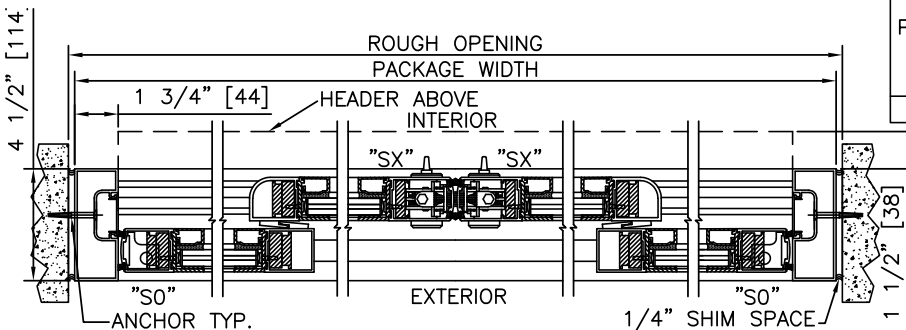
PLAN VIEW

SCALE: 3/8" = 1'-0"

NOTES

1. ELECTRICAL REQUIREMENTS: BY ELECTRICAL CONTRACTOR
  - 1.1. 120 VAC, 5 AMP MIN TO POWER OPERATOR.
  - 1.2. CONTROL CIRCUIT FROM SECURE ACTIVATION TO OPERATOR.
2. ROUGH OPENING SHALL PROVIDE 1/4"[6] SHIM SPACE ON SIDES AND TOP OF PACKAGE.
3. ACTIVATION AND SAFETY ZONES ARE FOR REFERENCE ONLY; SEE ANSI/BHMA A156.10 FOR DETAILED REQUIREMENTS.
4. PRODUCT SHALL BE MANUFACTURED AND INSTALLED IN ACCORDANCE WITH PRODUCT APPROVALS; SEE MIAMI-DADE COUNTY NOTICE OF ACCEPTANCE OR FLORIDA BUILDING CODE APPROVAL
5. SEE SPECIFICATIONS FOR ADDITIONAL INFORMATION.

MAX. PACKAGE DIMENSIONS (NARROW STILE)				
PACKAGE WIDTH	NOMINAL CLEAR DOOR OPENING	SX DOOR PANEL NOMINAL WIDTH	SO DOOR PANEL NOMINAL WIDTH	EMERGENCY BREAKOUT NOM. WIDTH
192"	82.3"	48.5"	48.1"	177.5"



2 HORIZONTAL SECTION

DESIGN RATINGS	
MISSILE IMPACT RATING	
<input checked="" type="checkbox"/>	LARGE MISSILE IMPACT
<input checked="" type="checkbox"/>	RISK CAT IV, 80 FT/S, "LEVEL E"
DESIGN PRESSURE RATING (PSF[Pa])	
POSITIVE	80 PSF [3830 Pa]
NEGATIVE	80 PSF [3830 Pa]

**DURA-STORM  
3000  
"LEVEL E"  
IMPACT SERIES**

BI-PARTING WITH PANIC RELEASE & AUTOMATIC LOCKING

PROJECT INFORMATION

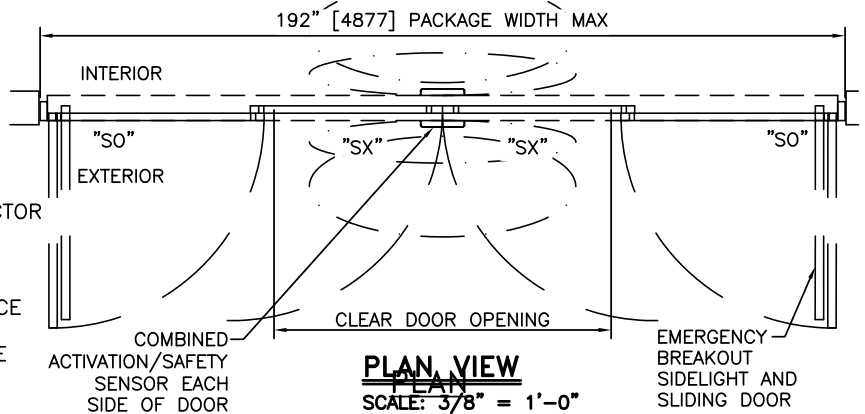
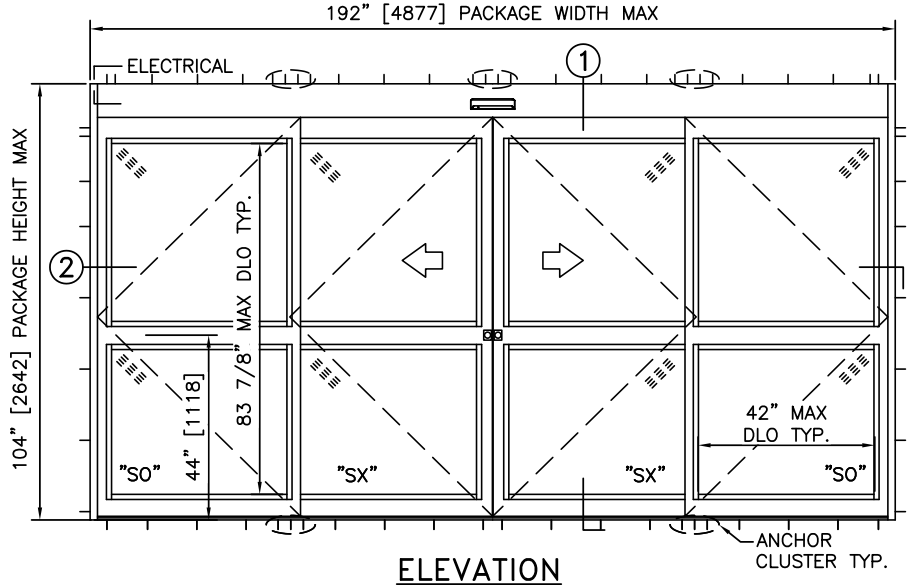
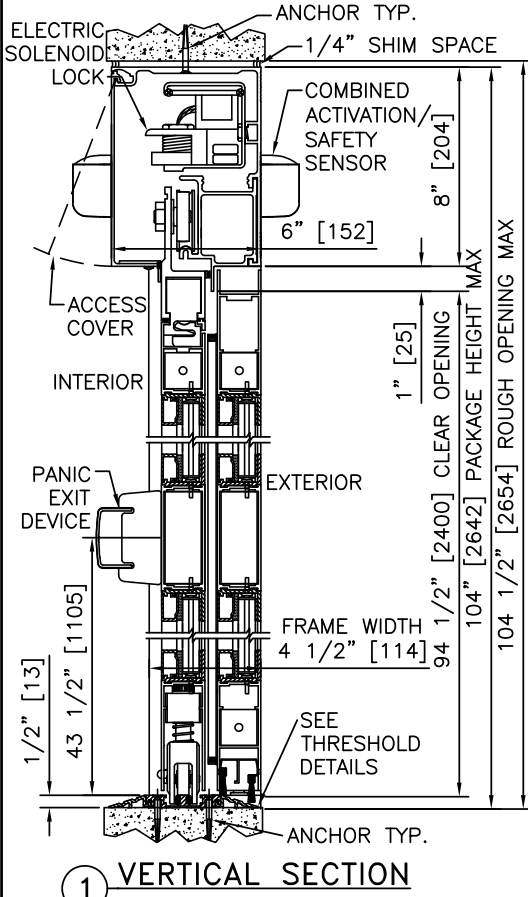
PROJECT NAME:

LOCATION:

DOOR NUMBER(S):

DATE:

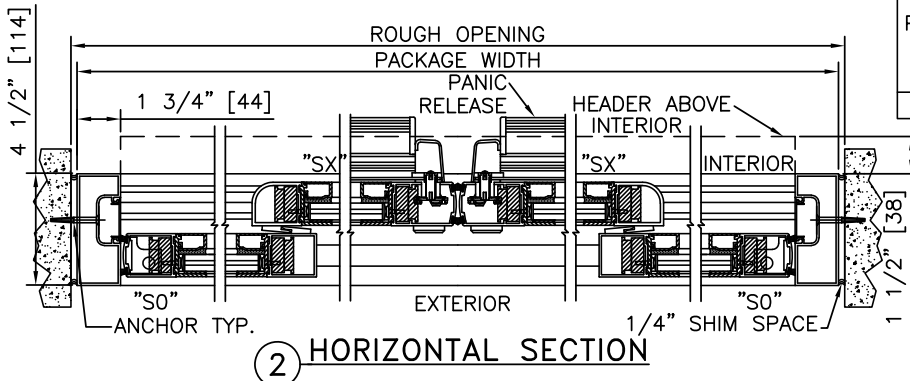
SHEET: OF



**NOTES**

- ELECTRICAL REQUIREMENTS: BY ELECTRICAL CONTRACTOR
  - 120 VAC, 5 AMP MIN TO POWER OPERATOR.
  - CONTROL CIRCUIT FROM SECURE ACTIVATION TO OPERATOR.
- ROUGH OPENING SHALL PROVIDE 1/4"[6] SHIM SPACE ON SIDES AND TOP OF PACKAGE.
- ACTIVATION AND SAFETY ZONES ARE FOR REFERENCE ONLY; SEE ANSI/BHMA A156.10 FOR DETAILED REQUIREMENTS.
- PRODUCT SHALL BE MANUFACTURED AND INSTALLED IN ACCORDANCE WITH PRODUCT APPROVALS; SEE MIAMI-DADE COUNTY NOTICE OF ACCEPTANCE OR FLORIDA BUILDING CODE APPROVAL
- SEE SPECIFICATIONS FOR ADDITIONAL INFORMATION.

MAX. PACKAGE DIMENSIONS (NARROW STYLE)				
PACKAGE WIDTH	NOMINAL CLEAR DOOR OPENING	SX DOOR PANEL NOMINAL WIDTH	SO DOOR PANEL NOMINAL WIDTH	EMERGENCY BREAKOUT NOM. WIDTH
192"	82.3"	48.5"	48.1"	177.5"



DESIGN RATINGS	
MISSILE IMPACT RATING	
<input checked="" type="checkbox"/>	LARGE MISSILE IMPACT
<input checked="" type="checkbox"/>	RISK CAT IV, 80 FT/S, "LEVEL E"
DESIGN PRESSURE RATING (PSF[Pa])	
POSITIVE	80 PSF [3830 Pa]
NEGATIVE	80 PSF [3830 Pa]