

MAXIMIZE SMALL SPACES

BIFOLD SB600 AUTOMATIC FOLDING DOOR

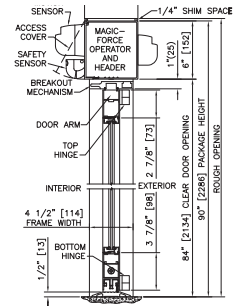
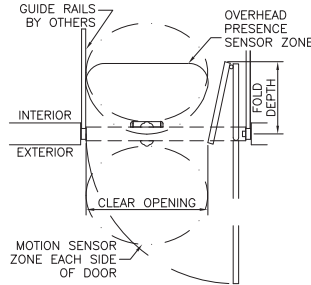
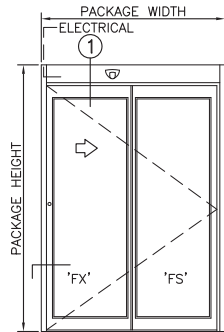
The SB600 Series is a retrofit-ready or new construction automatic bifolding door that allows for two-way traffic where there are currently restricted rough openings. Panels fold when retracting which allows for about 70% of the door's package to be free and clear for passage.

FEATURES AND BENEFITS:

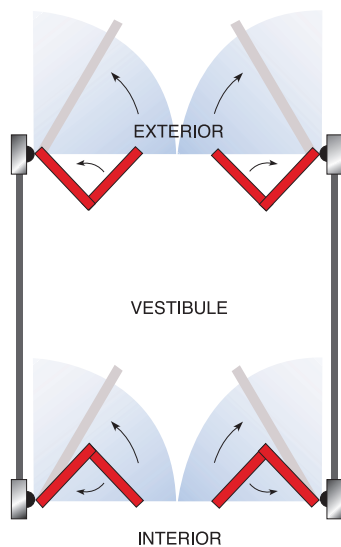
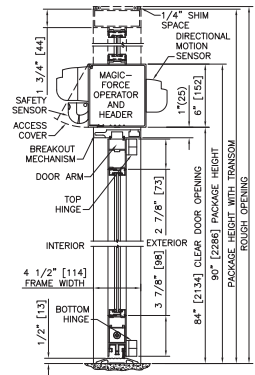
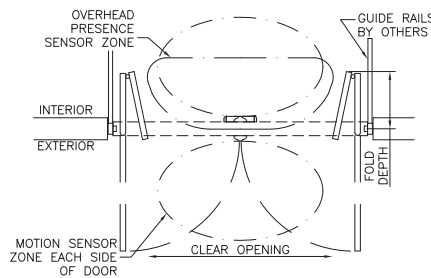
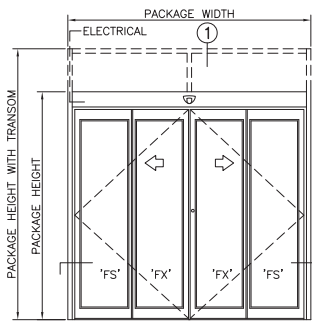
- Two- and Four-panel options can cover openings from 48" to 120" with a standard package height of 90"
- Heavy duty pivots for durability
- Finger guards for safety
- Laminate lock/flush bolts
- Safety sensor with sensor monitoring and advanced activation sensors
- Door panels fold in or out for the most efficient use of space at entrances or exits

BIFOLD SB600 AUTOMATIC FOLDING DOOR

TWO PANEL



FOUR PANEL



Our door panels fold in or out for the most efficient use of space at entrances or exits.

SPECIFICATIONS

Door packages are custom manufactured at 1/4" increments to fit your job requirements.

HEIGHT: 2 Panel: 7'-6" (2.2m) Minimum, 9'-2" (2.8m) Maximum;

4 Panel: 7'-6" (2.2m) Minimum, 8'-6" (2.6m) Maximum

WIDTH: 2 Panel: 4' (1.2m) Minimum, 62" (1.8) Maximum;

4 Panel: 6' (1.8m) Minimum, 10 (3m) Maximum

TYPICAL DOOR PANEL WEIGHT: Up to 100 Pounds Each (45kg)

DRIVE SYSTEM: STANLEY Swing Door Operator

CONTROLLER: Solid state electronic control, with sensor monitoring

SENSORS: 2 SU-100 motion sensors and 1 infrared presence sensor (fold side) for safety

BREAKOUT: All Panels

POWER REQUIRED: 120 VAC, 5 amps minimum

CODE COMPLIANCE: UL, cUL, ANSI/BHMA A156.10