



DURA-CARE™ SERIES 7300 TL-FBO ICU/CCU MANUAL SLIDING DOOR

Designed for the unique needs of hospital intensive care and critical care units

The 7300 TL-FBO is our ICU/CCU manual slide door that provides an industry leading 44" clear door opening within a 8' wide frame. When the panels are slid to full open and a larger opening width is needed, a flush bolt on the sliding panel can be easily disengaged to allow both panels to swing open. The trackless design provides smooth transportation of patients and equipment.

Optional Features

- **Smoke and Draft Protection** – Leakage rated and listed under UL1784 and labeled as an effective smoke barrier.
- **Positive/Negative Pressure Environments** – Add concealed sweeps to a leakage rated system for positive/negative pressure applications.
- **Anti-microbial Protection** – Prevents the spread of infections. Available on touch-points or full package.
- **Self Closing** – Integrated concealed system available.

DURA-CARE™ SERIES 7300 TL-FBO ICU/CCU MANUAL SLIDING DOOR

Integrated Closer (optional)

Automatically Closes Door

Flush Bolt

Flush bolt disengages panels for convenience swing

Positive Latch (optional)

Self-latching

Convenience Swing

(Full Break Out)

When sliding panel is completely open, both panels can break out for a larger opening

Sweeps (optional)

For positive/negative pressure environments

Smoke and Draft Seals (optional)

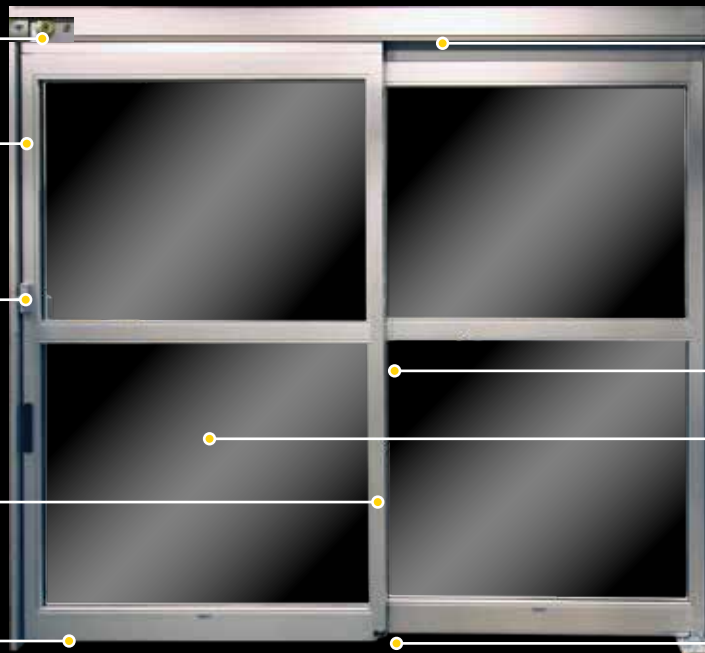
Leakage rated under UL1784 and labeled as a smoke barrier

Wide Opening

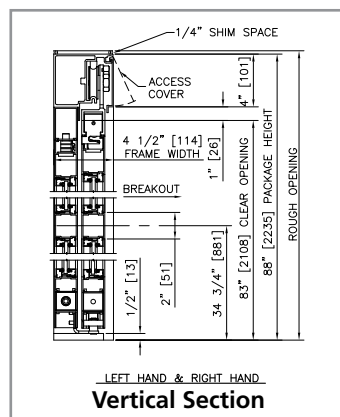
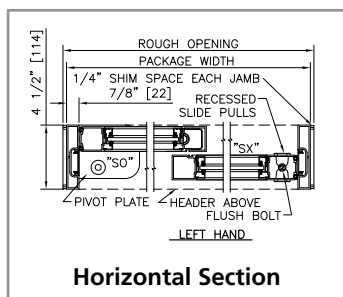
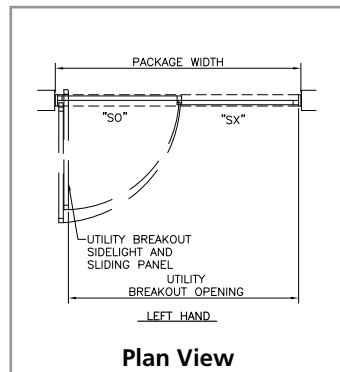
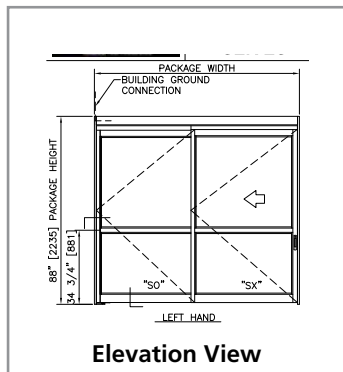
44" Clear door opening (with 8-foot package) for patient bed and equipment transfers without having to break out the door panels

Trackless

Trackless design for smooth and safe patient bed and equipment transfers



Views



Product Specifications

Description	Standard Configuration	Options
Header Dimension	8" (h) x 6" (w)	
Stiles	Narrow (1.75")	
Supporting Glass Size	0.25"	0.50", 0.625", 1.0" Integral Blinds, Electronic Privacy Glass*
Bottom Rails	4"	6", 8", 10", 12"
Jamb Dimension	4.5" x 0.875"	4.5" x 1.75"
Finish	Clear	Special Finish Available
Package Height	88.0"	Max. Height 92.0"
Width - 2 Panel	96"	Max Width 108"
Clear Door Opening (CDO)	44" at package width of 96"	
High Temperature Gaskets	Included	
Integrated Self-Closer	Optional (only available up to 108" wide packages)	
Positive Latch	Optional (standard feature w/Smoke & Draft)	
Listings/Ratings	UL1784, NFPA 105, +/- Pressure	
+/- Pressure Rating	Max. rating with optional concealed sweeps	
Utility breakout	SO and SX at full open	
Codes	IBC, UL, NFPA, FGI/AIA	
Anti-Microbial Protection	Optional - Touchpoints or full-package	

*8" tall header is required.

Single Slide Formulas – Narrow Stile

$$\text{Package Width} = 2x \text{ Clear Door Opening} + 7.6"$$

$$\text{Clear Door Opening} = \frac{1}{2} \text{ Package Width} - 3.8"$$

$$\text{Utility Breakout Width} = \text{Clear Door Opening} + 3.5"$$

$$\text{SX Door Panel Width} = \frac{1}{2} \text{ Package Width} + 1.6"$$

$$\text{SO Door Panel Width} = \frac{1}{2} \text{ Package Width} - 1.3"$$

TYPICAL PACKAGE DIMENSIONS				
PACKAGE WIDTH	NOMINAL CLEAR DOOR OPENING	SLIDING DOOR NOMINAL WIDTH	SIDELIGHT NOMINAL WIDTH	UTILITY BREAKOUT NOMINAL WIDTH
84" [2134]	38.2" [970]	43.6" [1108]	40.8" [1035]	78.0" [1981]
96" [2438]	44.2" [1122]	49.6" [1260]	46.8" [1187]	90.0" [2286]
108" [2743]	50.2" [1275]	55.6" [1413]	52.8" [1340]	102.0" [2591]