

**DURA-GLIDE
2000/3000
SERIES**

2000/3000 TRANSOM OPTIONS

PROJECT INFORMATION

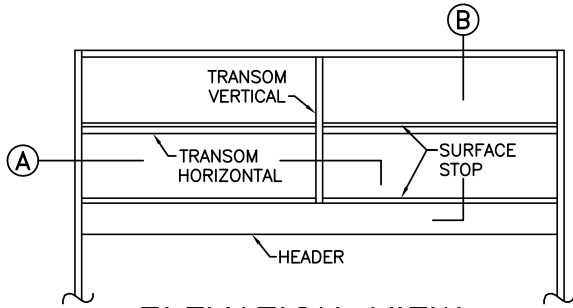
PROJECT NAME:

LOCATION:

DOOR NUMBER(S):

DATE:

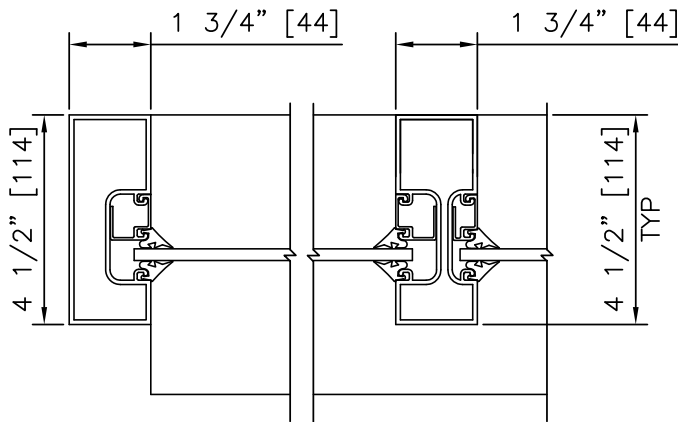
SHEET: OF



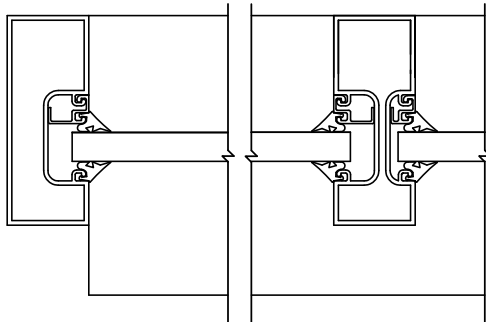
ELEVATION VIEW
SCALE: NOT TO SCALE

NOTES

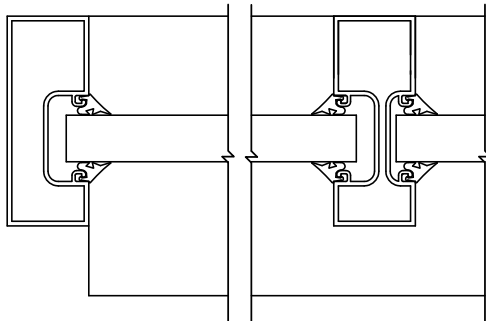
1. "INTERIOR" AND "EXTERIOR" ORIENTATION VARIES WITH PACKAGE TYPE. SEE SPECIFIC PACKAGE DRAWINGS FOR CORRECT ORIENTATION.
2. ALL 2000/3000 SERIES PACKAGES SHOWN WITH STANDARD 4 1/2" [114] FRAME; 6" [152] FRAME AVAILABLE. INTERNAL TRANSOM HORIZONTAL AND VERTICAL ELEMENTS ARE 4 1/2" [144].
3. SEE SPECIFICATIONS FOR ADDITIONAL INFORMATION.



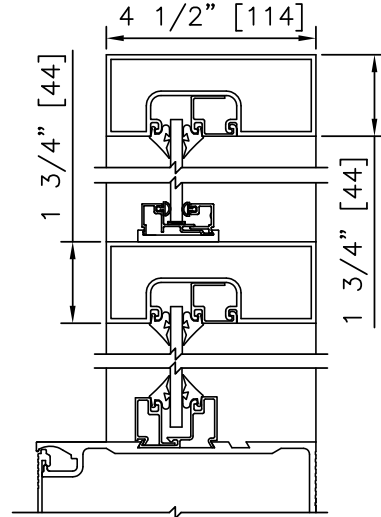
A1 HORIZONTAL SECTION
1/4" GLASS



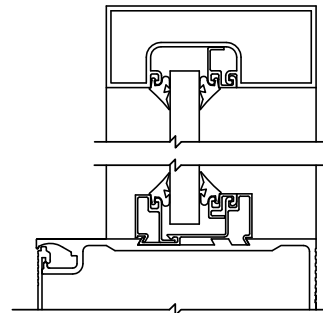
A2 HORIZONTAL SECTION
5/8" GLASS



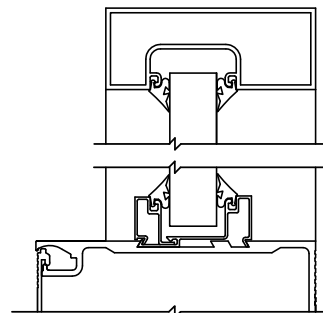
A3 HORIZONTAL SECTION
1" GLASS



B1 VERTICAL SECTION
1/4" GLASS



B2 VERTICAL SECTION
5/8" GLASS



B3 VERTICAL SECTION
1" GLASS