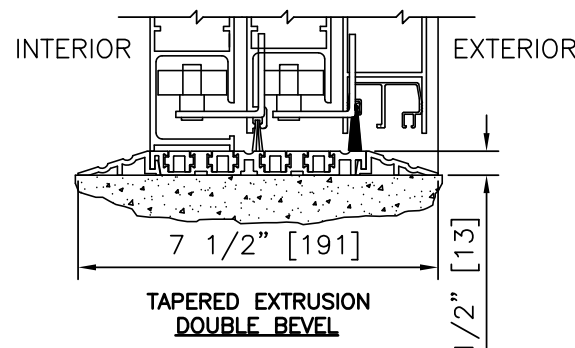
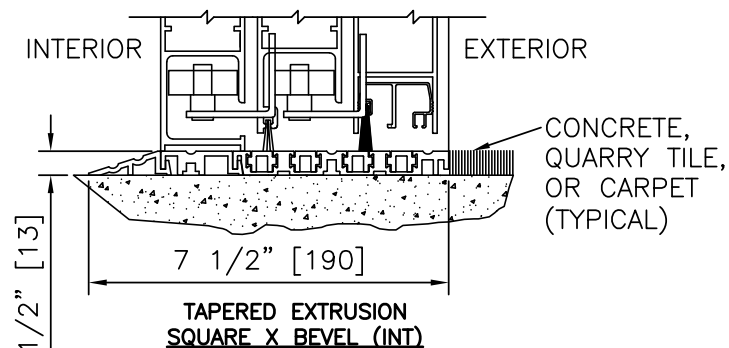
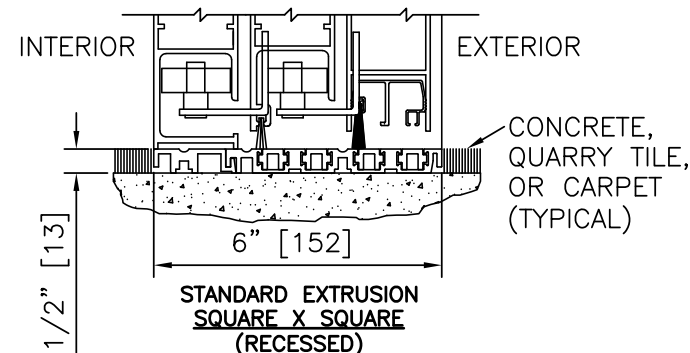
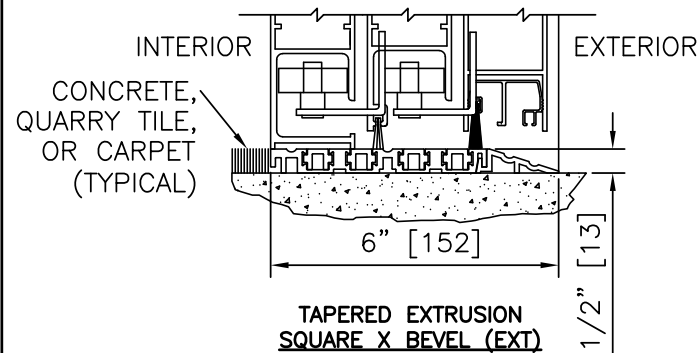


STANLEY
Access Technologies

DURA-GLIDE 5000 SERIES & DURAFIT

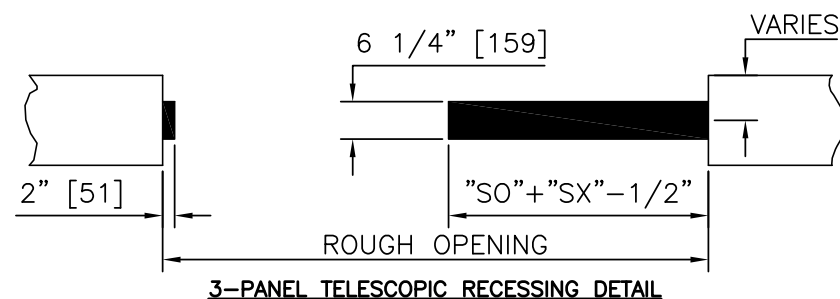
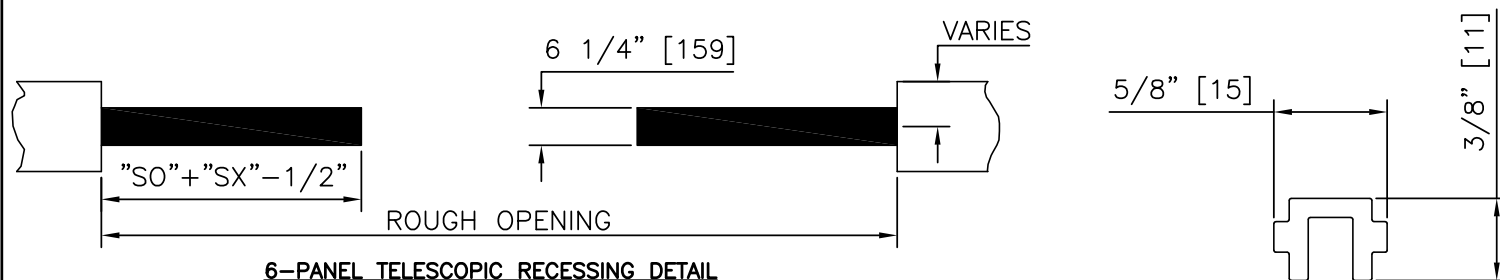
THRESHOLD OPTIONS	
PROJECT INFORMATION	
PROJECT NAME:	
LOCATION:	
DOOR NUMBER(S):	
DATE:	SHEET: OF



DURA-GLIDE 5200 SERIES 6" FRAME

SCALE: 3" = 1'-0"

NOTE: THRESHOLDS ARE NOT REQUIRED ON THE 5200 SERIES, HOWEVER, DUE TO VARIOUS FLOORING CONDITIONS THE THRESHOLDS SHOWN ARE AVAILABLE.



PLAN VIEW

SCALE: 3/8" = 1'-0"

NOTE: RECESSING MAY BE CONTINUOUS

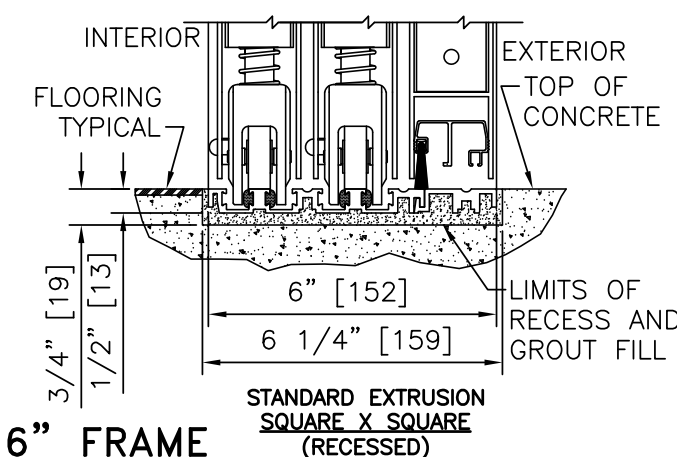
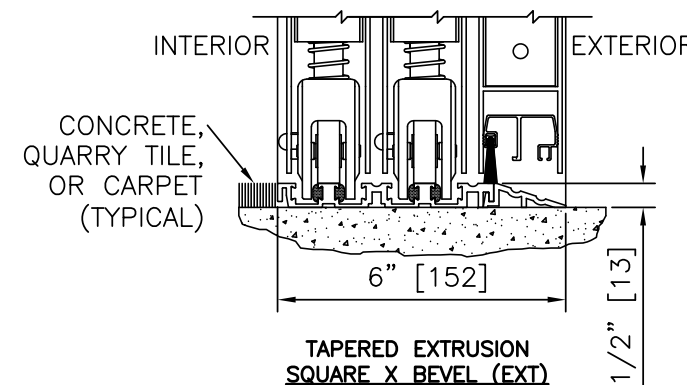
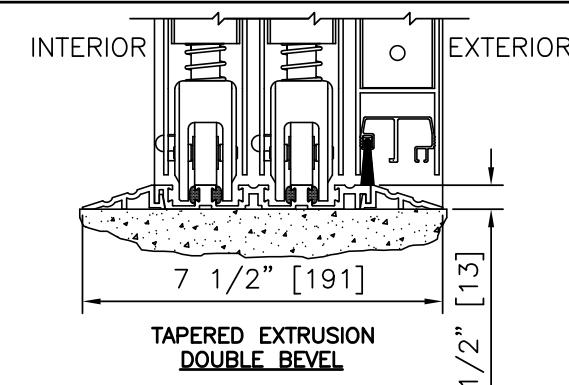
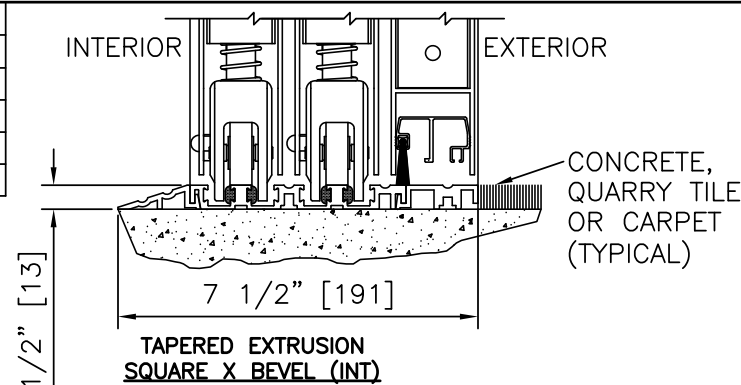
STRIP FILLER

SCALE: SHOWN ACTUAL SIZE

- NOTES:
1. RECESS SHALL BE 3/4" IN DEPTH BY 6 1/4" WIDE AND SHALL EXTEND FULL WIDTH OF ROUGH OPENING FOR CONTINUOUS THRESHOLDS OR UNDER "SO" AND INTERMEDIATE "SX" PANELS ONLY FOR SEAMLESS FLOOR CONDITION AT DOOR OPENING.
 2. FOR CONTINUOUS OPTION, THRESHOLD SHALL BE SPLIT AS REQUIRED TO FACILITATE MAINTENANCE OF THRESHOLD SECTION AT DOOR OPENING.
 3. FILLER STRIP IS REQUIRED TO FILL SLOTS IN CONTINUOUS THRESHOLD THROUGHOUT DOOR OPENING.

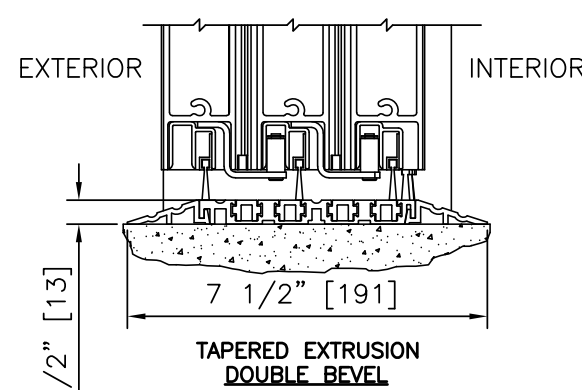
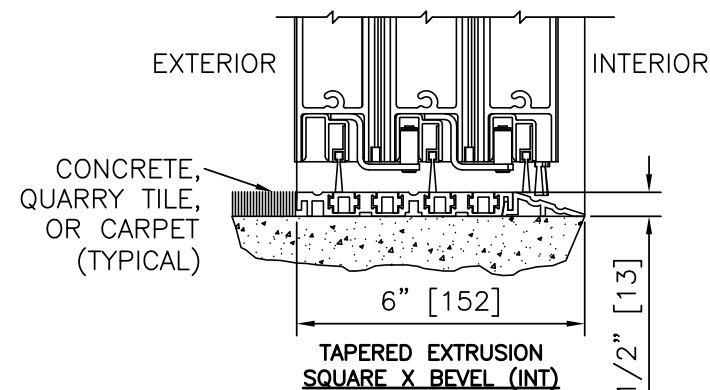
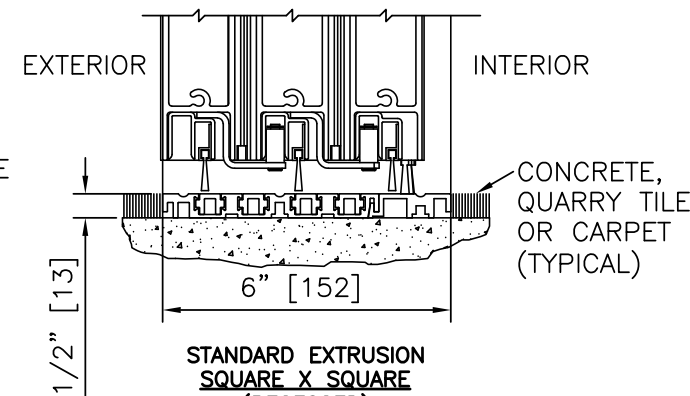
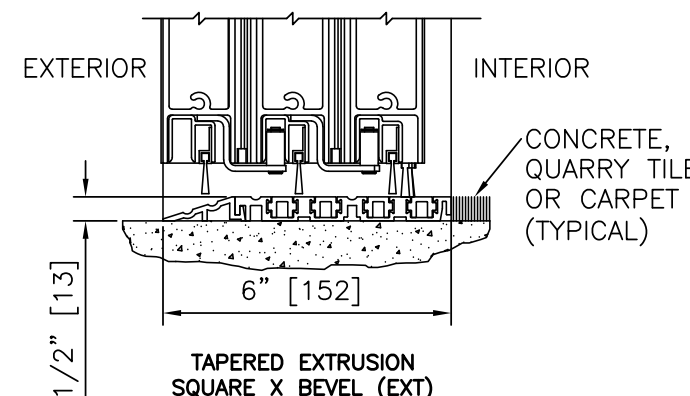
DURA-GLIDE 5200/5300 SERIES RECESSING DETAIL

SCALE: AS NOTED



DURA-GLIDE 5300 SERIES 6" FRAME

SCALE: 3" = 1'-0"



DURAFIT SERIES 6" FRAME

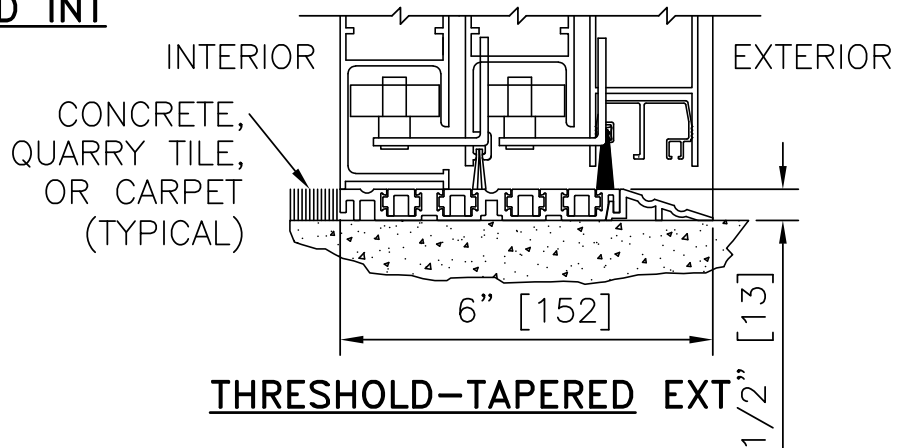
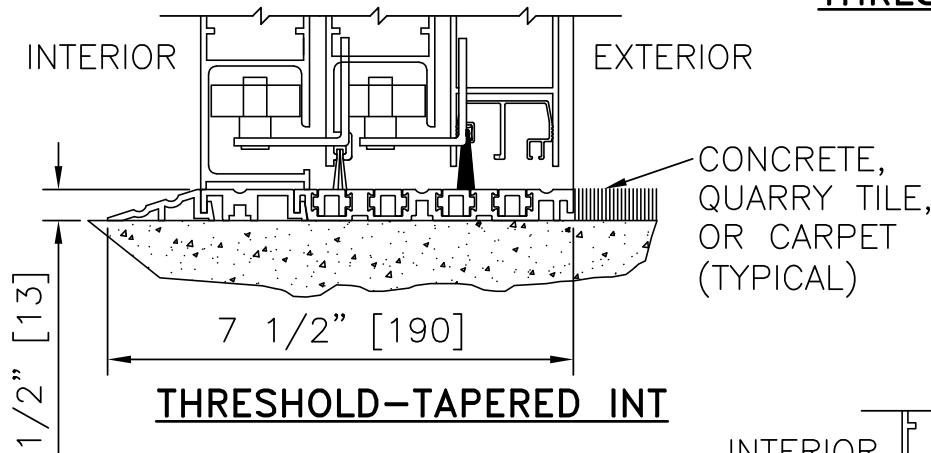
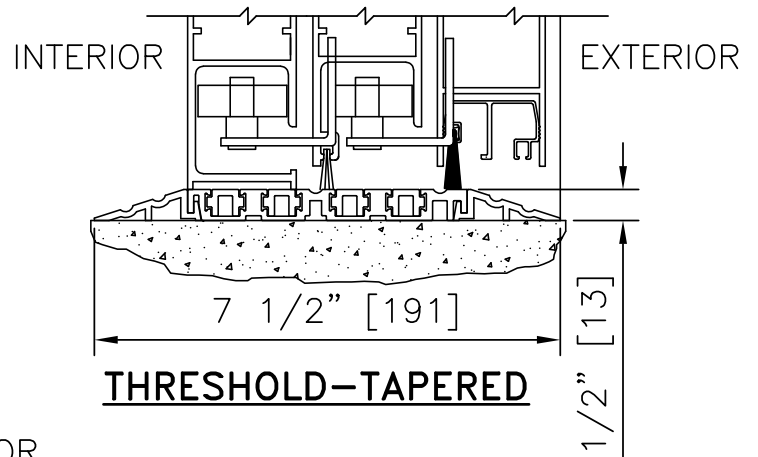
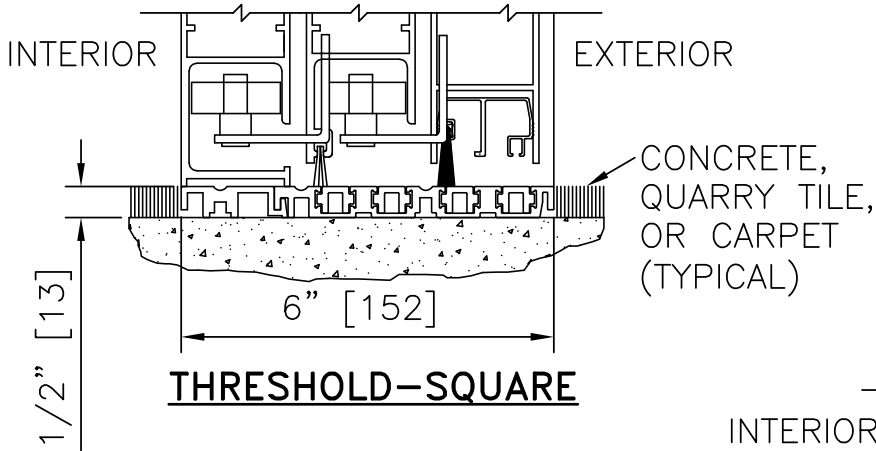
SCALE: 3" = 1'-0"

NOTE: THRESHOLDS ARE NOT REQUIRED ON THE DURAFIT SERIES, HOWEVER, DUE TO VARIOUS FLOORING CONDITIONS THE THRESHOLDS SHOWN ARE AVAILABLE.

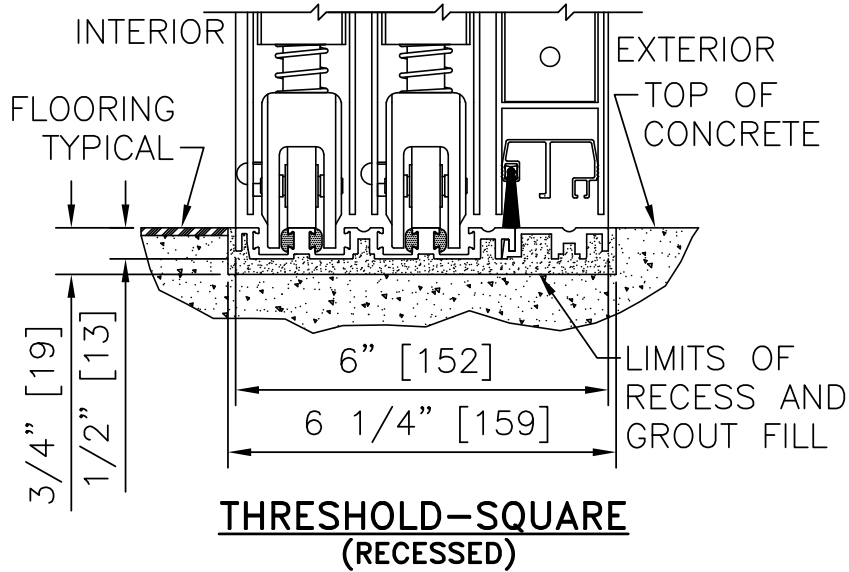
THRESHOLD OPTIONS

**DURA-GLIDE
5000 SERIES
& DURAFIT**

STANLEY
Access Technologies

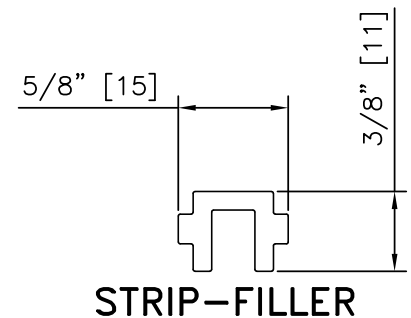
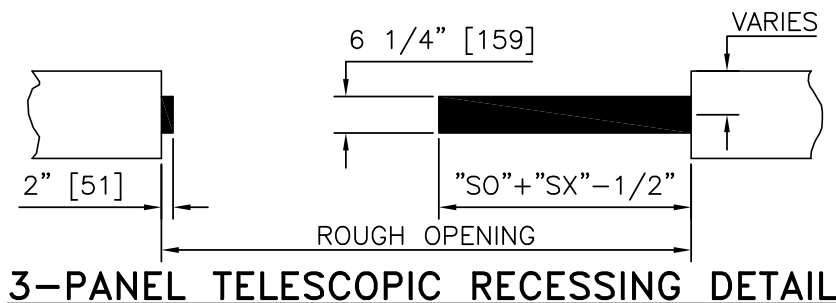
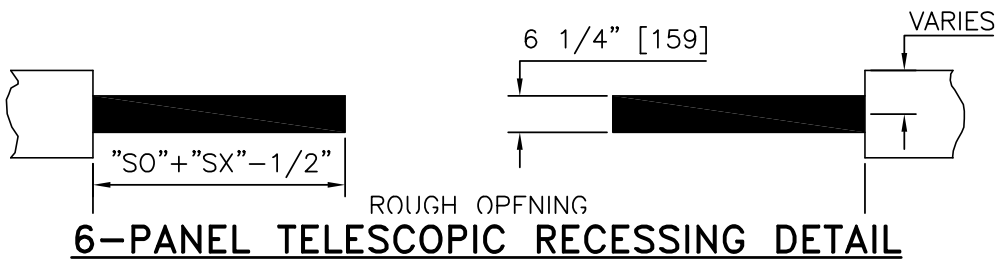


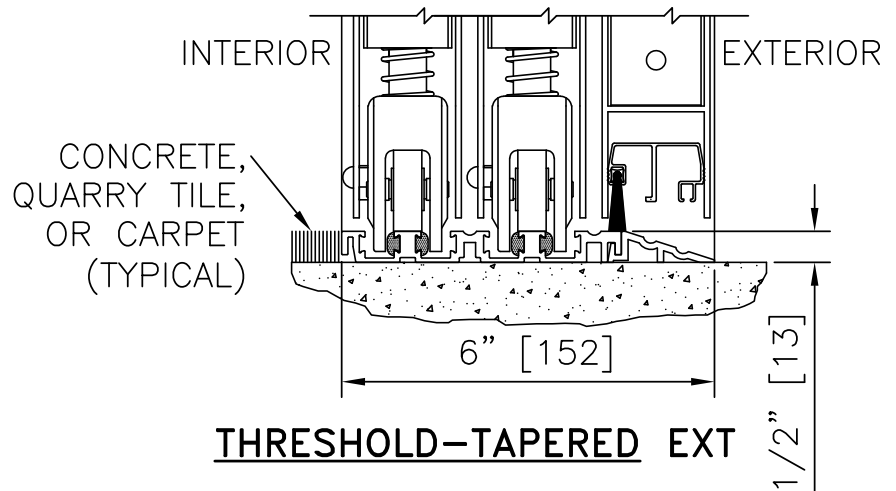
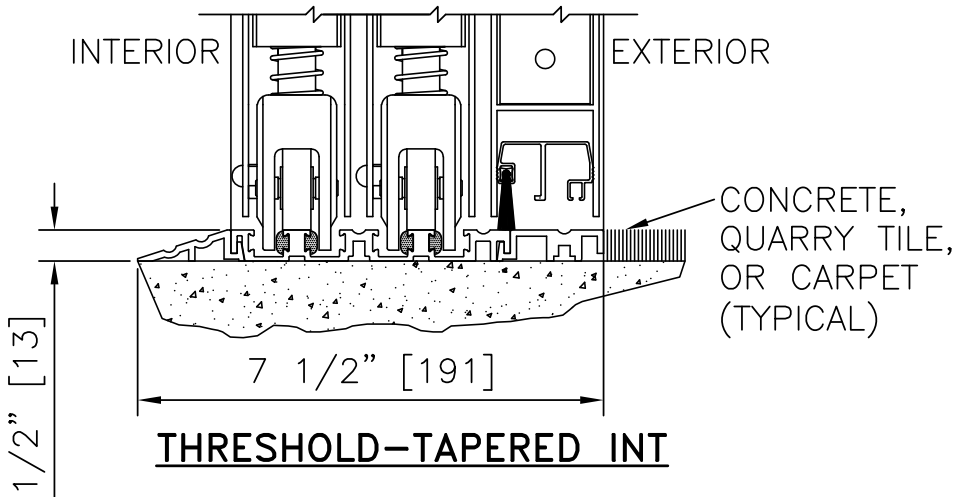
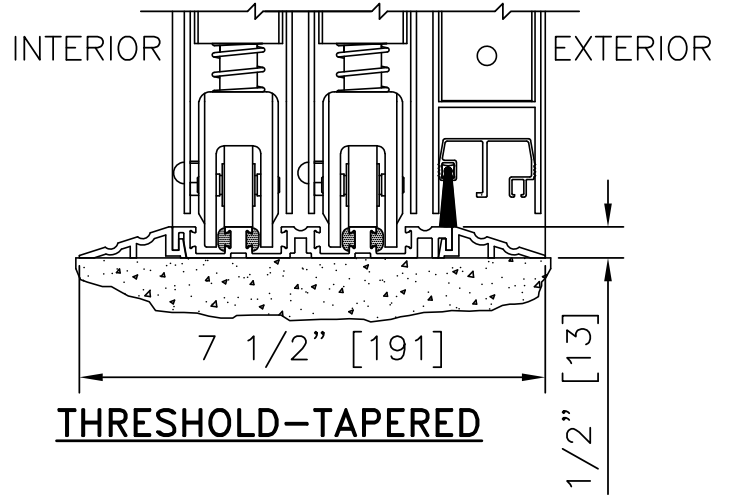
NOTE: THRESHOLDS ARE NOT REQUIRED ON THE 5200 SERIES, HOWEVER, DUE TO VARIOUS FLOORING CONDITIONS THE THRESHOLDS SHOWN ARE AVAILABLE.

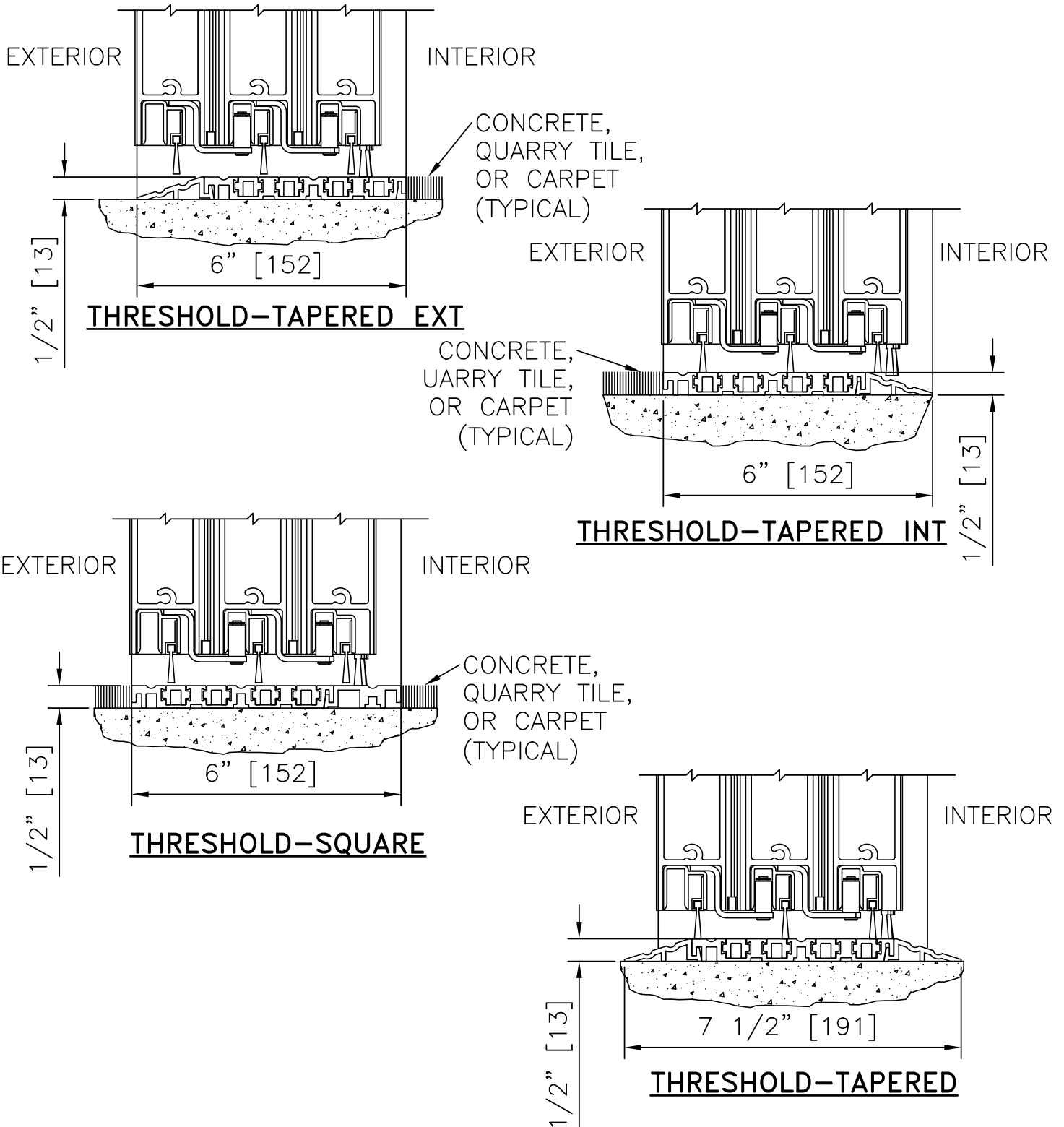


NOTES:

1. RECESS SHALL BE 3/4" IN DEPTH BY 6 1/4" WIDE AND SHALL EXTEND FULL WIDTH OF ROUGH OPENING FOR CONTINUOUS THRESHOLDS OR UNDER "SO" AND INTERMEDIATE "SX" PANELS ONLY FOR SEAMLESS FLOOR CONDITION AT DOOR OPENING.
2. FOR CONTINUOUS OPTION, THRESHOLD SHALL BE SPLIT AS REQUIRED TO FACILITATE MAINTENANCE OF THRESHOLD SECTION AT DOOR OPENING.
3. FILLER STRIP IS REQUIRED TO FILL SLOTS IN CONTINUOUS THRESHOLD THROUGHOUT DOOR OPENING.







NOTE: THRESHOLDS ARE NOT REQUIRED ON THE DURAFIT SERIES, HOWEVER, DUE TO VARIOUS FLOORING CONDITIONS THE THRESHOLDS SHOWN ARE AVAILABLE.