



## **SLIDING AUTOMATIC ENTRANCES: DURA-GLIDE™ 2000, BI-PARTING**

### **1.25 - BI-PARTING WITH OPTIONAL TRANSOM**

- **1.25.01 - Bi-Parting with Transom**
- **1.25.02 - Bi-Parting with Optional Transom**
- **1.25.03 - Bi-Parting with Access Control, Surface Applied**
- **1.25.04 - Bi-Parting with Transom and Access Control, Surface Applied**
- **1.25.05 - Bi-Parting with Access Control, Recessed**
- **1.25.06 - Bi-Parting with Transom and Access Control, Recessed**
- **1.25.07 - Bi-Parting, Surface Applied**
- **1.25.08 - Bi-Parting with Access Control, Recessed, Surface Applied**
- **1.25.09 - Bi-Parting with Access Control, Recessed, Surface Applied**
- **1.25.10 - Bi-Parting with Access Control, Recessed, Surface Applied**
- **1.25.11 - Bi-Parting with Access Control, Recessed, Surface Applied**
- **1.25.12 - Bi-Parting with Access Control, Recessed, Surface Applied**

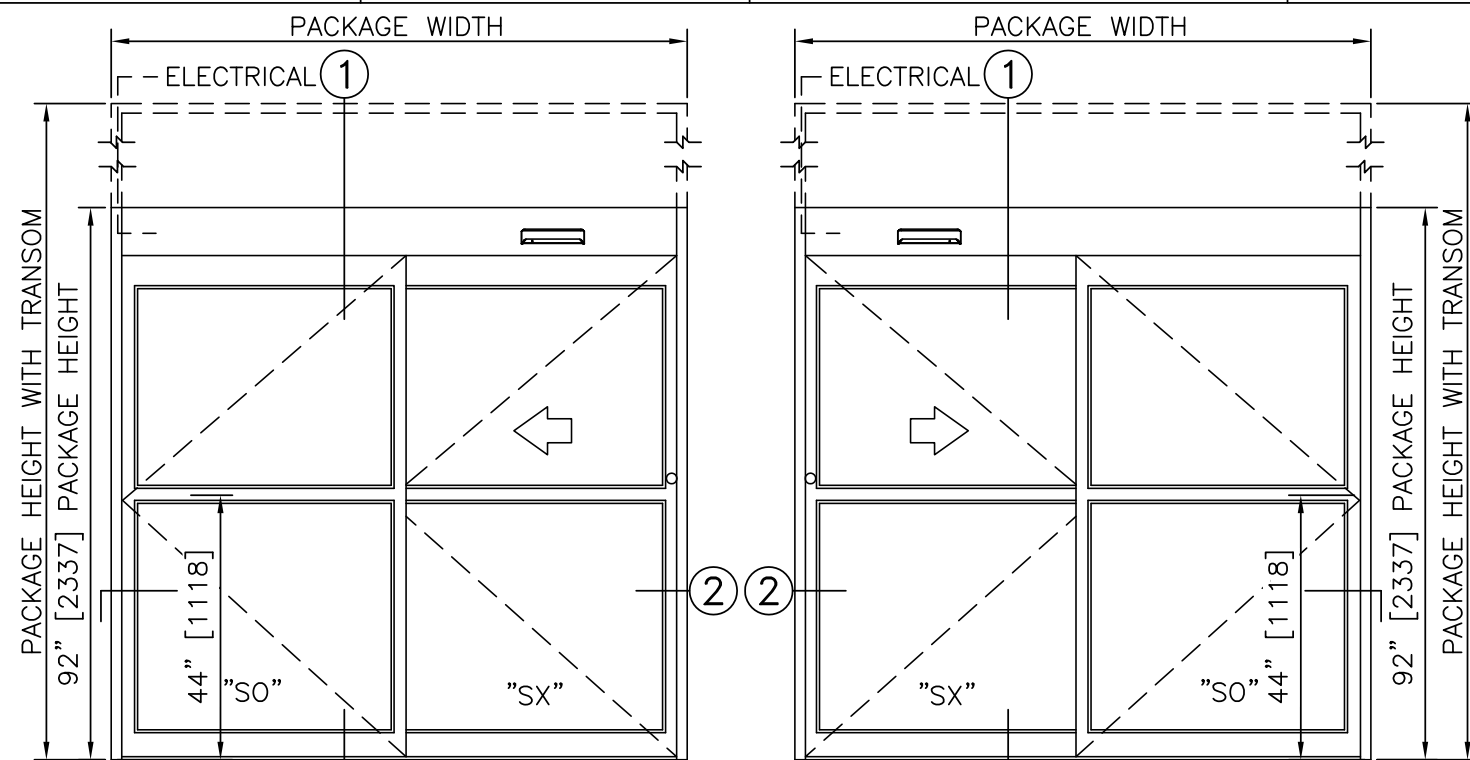
**STANLEY**  
Access Technologies

**DURA-GLIDE  
GREENSTAR  
3000 SERIES**

**SINGLE SLIDE WITH OPTIONAL TRANSOM**

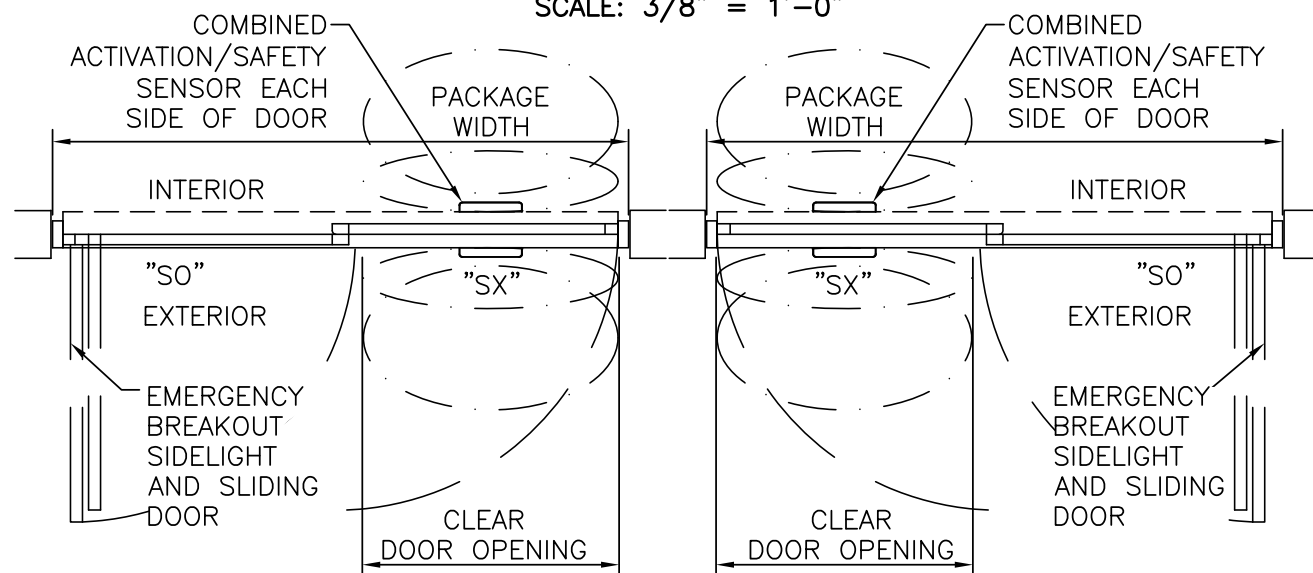
PROJECT INFORMATION

PROJECT NAME: \_\_\_\_\_  
 LOCATION: \_\_\_\_\_  
 DOOR NUMBER(S): \_\_\_\_\_  
 DATE: \_\_\_\_\_ SHEET: OF \_\_\_\_\_



LEFT HAND SLIDE      ELEVATION VIEW      RIGHT HAND SLIDE

SCALE: 3/8" = 1'-0"

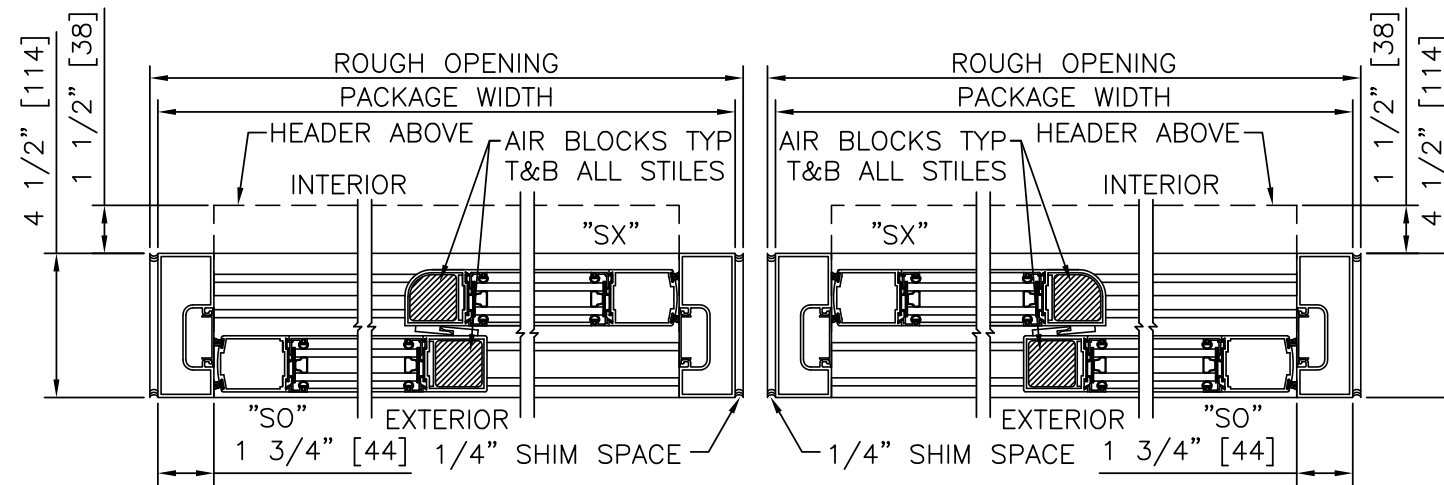


LEFT HAND SLIDE      PLAN VIEW      RIGHT HAND SLIDE

SCALE: 3/8" = 1'-0"

**NOTES**

- ELECTRICAL REQUIREMENTS: 120 VAC, 5 AMP MIN TO POWER OPERATOR BY ELECTRICAL CONTRACTOR.
- ROUGH OPENING SHALL PROVIDE 1/4"[6] SHIM SPACE ON SIDES AND TOP OF PACKAGE.
- LIMITS OF ACTIVATION AND SAFETY ZONES ARE FOR REFERENCE ONLY; SEE ANSI/BHMA A156.10 FOR DETAILED REQUIREMENTS.
- STANDARD LOCKING IS 2-POINT, 3-POINT AND ACCESS CONTROL SYSTEMS AVAILABLE. SEE SHEET 1.60.
- STANDARD GLAZING STOPS FOR SLIDING AND FIXED PANELS ARE 1"[25].
- STANDARD JAMB TUBES SHOWN; 6"[152] AVAILABLE.
- STANDARD STILES, BOTTOM RAILS AND MUNTINS SHOWN; MEDIUM STILES, BOTTOM RAILS TO 12"[305], AND 4 1/4"[108] MUNTINS AVAILABLE.
- AIR INFILTRATION RATING: LESS THAN 1.0 CFM/FT2 @ 1.57 PSF; PER ASTM E283 (NFRC 400), WITH GREENFIT SEALING SYSTEM.
- SEE SPECIFICATIONS FOR ADDITIONAL INFORMATION.

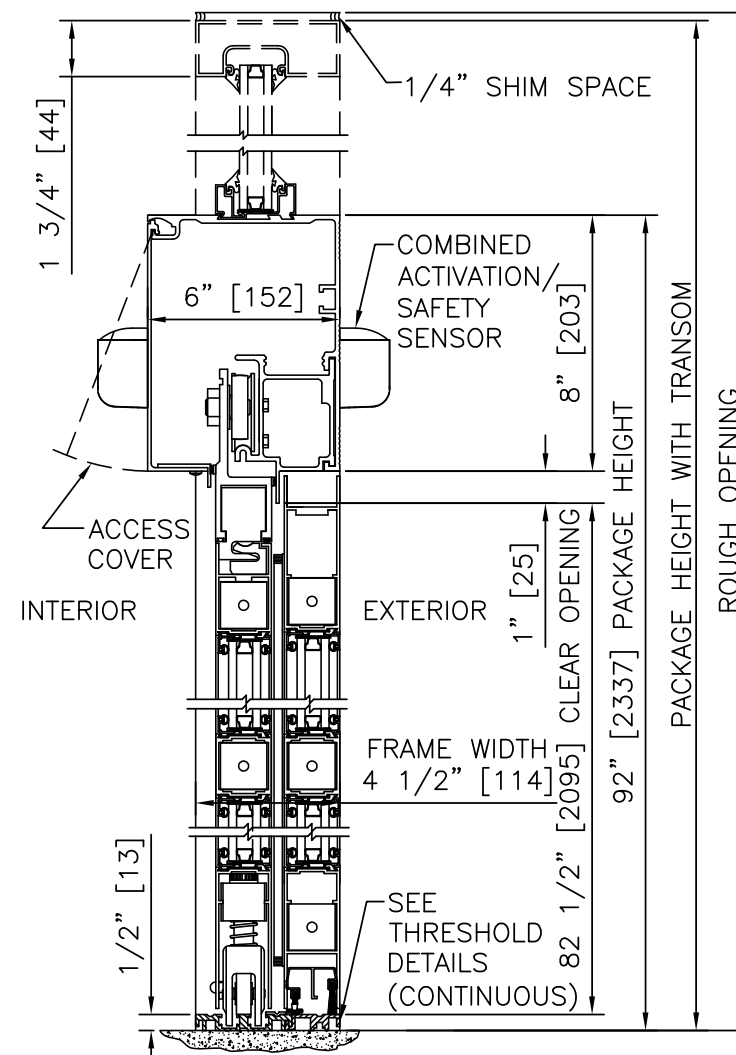


LEFT HAND      HORIZONTAL SECTION      RIGHT HAND

SCALE: 2" = 1'-0"

**PRODUCT OPTIONS**

- TRANSOM  
 YES  
 VERTICALS 1 2 3
- FINISH  
 ANODIZED CLEAR CL2  
 ANODIZED DK BRONZE  
 CUSTOM
- LOCKING  
 2-POINT       3-POINT  
 ACCESS CONTROL (PANIC)
- STILES  
 NARROW       MEDIUM
- BOTTOM RAILS  
 STANDARD 4"  
 OPTIONAL 6" 8" 10" 12"
- THRESHOLDS  
 SQ/BVL (EXT)       SQ/BVL (INT)  
 DBL BVL       RECESSED
- ACTIVATION/SAFETY  
 2 COMBINED ACTIVATION/SAFETY SENSORS
- OTHER OPTIONS  
 ROTARY CTRL SWITCH       KEYED  
 UNINTERRUPTIBLE POWER SUPPLY  
 FLY OPEN BOX  
 WIND DAMPERS  
 SWING PANEL CLOSER WITH MAG LATCH (GREEN-SET-GO)  
 ALARM CONTACTS



VERTICAL SECTION

SCALE: 2" = 1'-0"

TYPICAL PACKAGE DIMENSIONS (NARROW STILE)			
PACKAGE WIDTH	NOMINAL CLEAR DOOR OPENING	DOOR PANEL NOMINAL WIDTH	EMERGENCY BREAKOUT NOM. WIDTH
84"	35.3"	41.5"	75.0"
96"	41.3"	47.5"	87.0"
108"	47.3"	53.5"	99.0"

**SINGLE SLIDE FORMULAS - NARROW STILE**

PACKAGE WIDTH = 2 X CLEAR DOOR OPENING + 13.4"  
 CLEAR DOOR OPENING = 1/2 PACKAGE WIDTH - 6.7"  
 EMERGENCY BREAKOUT WIDTH = PACKAGE WIDTH - 9.0"  
 DOOR PANEL WIDTH = 1/2 PACKAGE WIDTH - 0.5"

**SINGLE SLIDE FORMULAS - MEDIUM STILE**

PACKAGE WIDTH = 2 X CLEAR DOOR OPENING + 17.8"  
 CLEAR DOOR OPENING = 1/2 PACKAGE WIDTH - 8.9"  
 EMERGENCY BREAKOUT WIDTH = PACKAGE WIDTH - 10.5"  
 DOOR PANEL WIDTH = 1/2 PACKAGE WIDTH + 0.2"

**DURA-GLIDE  
GREENSTAR  
3000 SERIES**

**STANLEY**  
Access Technologies

**DURA-GLIDE  
GREENSTAR  
3000 SERIES**

SINGLE SLIDE RIGHT HAND

PROJECT INFORMATION

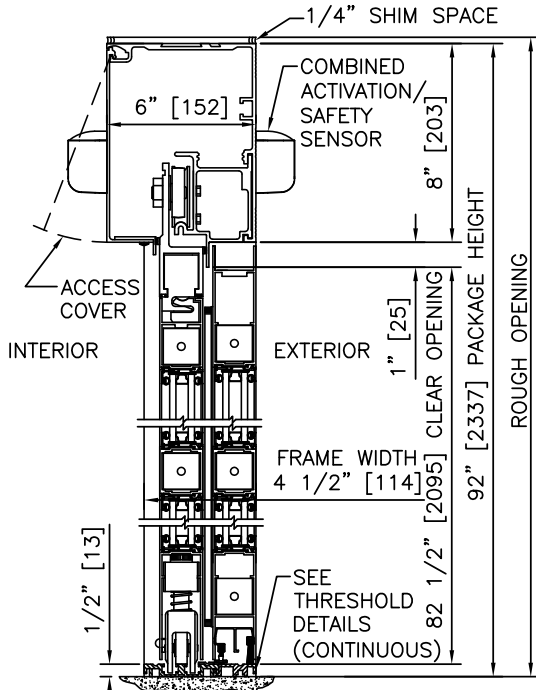
PROJECT NAME:

LOCATION:

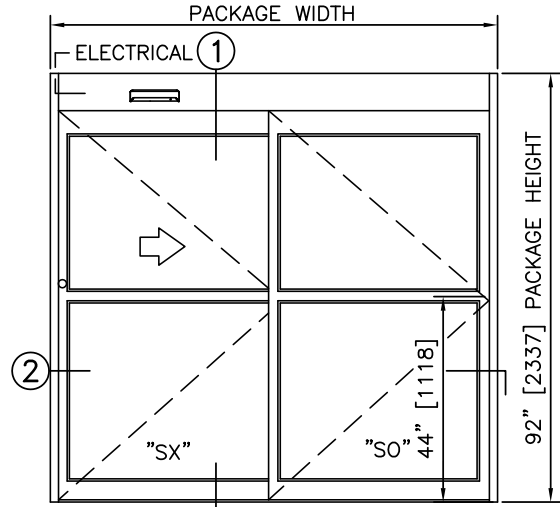
DOOR NUMBER(S):

DATE:

SHEET: OF



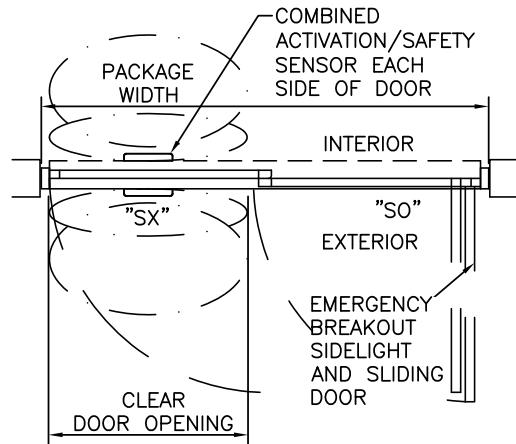
① VERTICAL SECTION



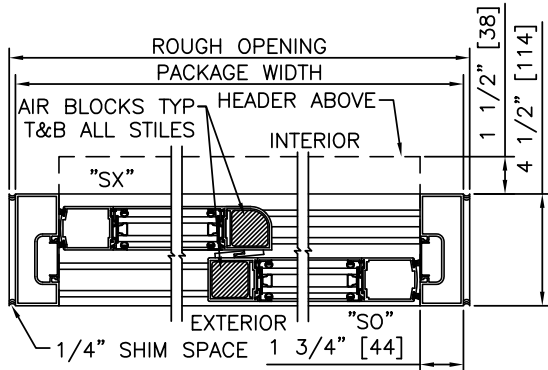
ELEVATION

NOTES

1. ELECTRICAL REQUIREMENTS: 120 VAC, 5 AMP MIN TO POWER OPERATOR BY ELECTRICAL CONTRACTOR.
2. ROUGH OPENING SHALL PROVIDE 1/4" [6] SHIM SPACE ON SIDES AND TOP OF PACKAGE.
3. LIMITS OF ACTIVATION AND SAFETY ZONES ARE FOR REFERENCE ONLY; SEE ANSI/BHMA A156.10 FOR DETAILED REQUIREMENTS.
4. AIR INFILTRATION RATING: LESS THAN 1.0 CFM/FT2 @ 1.57 PSF; PER ASTM E283 (NFRC 400), WITH GREENFIT SEALING SYSTEM.
5. SEE SPECIFICATIONS FOR ADDITIONAL INFORMATION.



PLAN



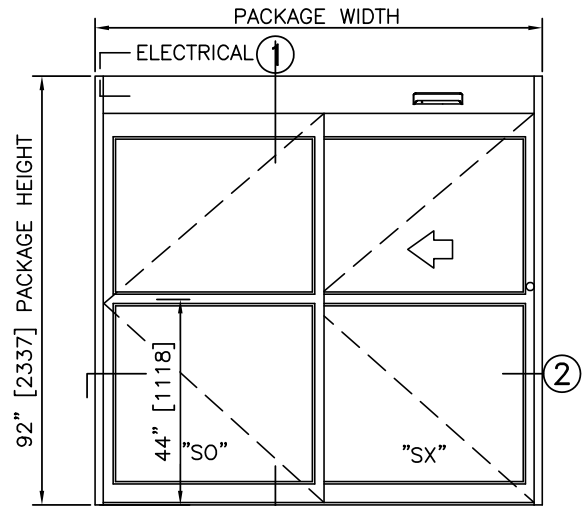
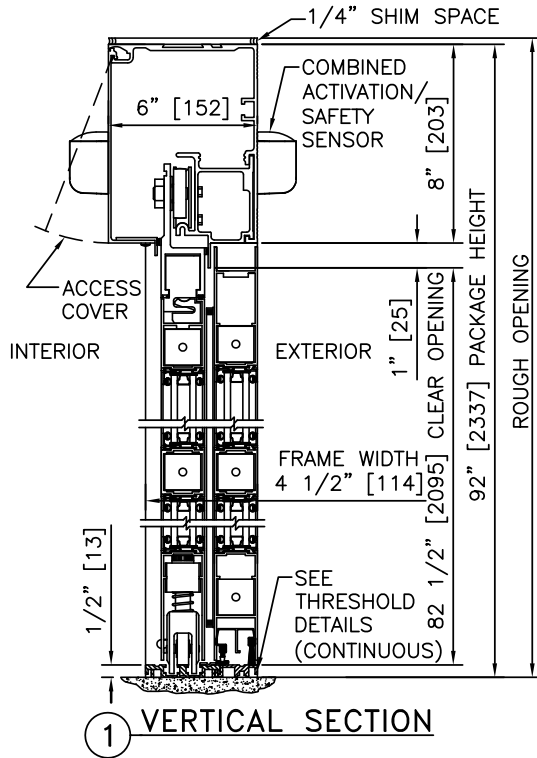
② HORIZONTAL SECTION

TYPICAL PACKAGE DIMENSIONS (NARROW STILE)			
PACKAGE WIDTH	NOMINAL CLEAR DOOR OPENING	DOOR PANEL NOMINAL WIDTH	EMERGENCY BREAKOUT NOM. WIDTH
84"	35.3"	41.5"	75.0"
96"	41.3"	47.5"	87.0"
108"	47.3"	53.5"	99.0"

**DURA-GLIDE  
GREENSTAR  
3000 SERIES**

SINGLE SLIDE LEFT HAND  
PROJECT INFORMATION

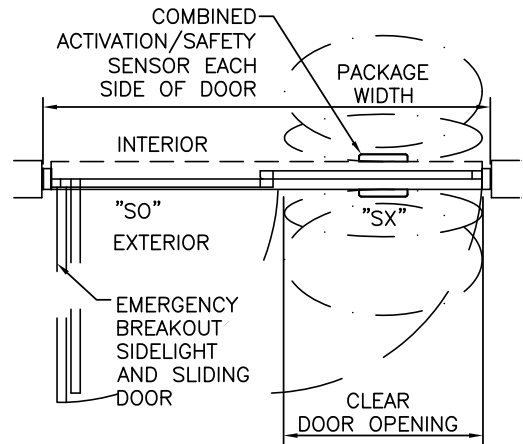
PROJECT NAME:  
LOCATION:  
DOOR NUMBER(S):  
DATE: SHEET: OF



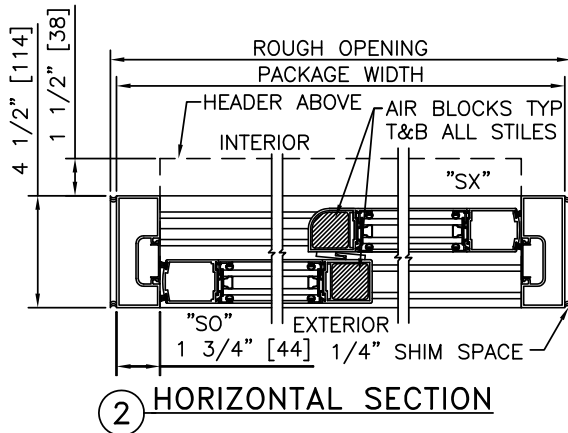
**ELEVATION**

**NOTES**

1. ELECTRICAL REQUIREMENTS: 120 VAC, 5 AMP MIN TO POWER OPERATOR BY ELECTRICAL CONTRACTOR.
2. ROUGH OPENING SHALL PROVIDE 1/4"[6] SHIM SPACE ON SIDES AND TOP OF PACKAGE.
3. LIMITS OF ACTIVATION AND SAFETY ZONES ARE FOR REFERENCE ONLY; SEE ANSI/BHMA A156.10 FOR DETAILED REQUIREMENTS.
4. AIR INFILTRATION RATING: LESS THAN 1.0 CFM/FT2 @ 1.57 PSF; PER ASTM E283 (NFRC 400), WITH GREENFIT SEALING SYSTEM.
5. SEE SPECIFICATIONS FOR ADDITIONAL INFORMATION.



**PLAN**



TYPICAL PACKAGE DIMENSIONS (NARROW STILE)			
PACKAGE WIDTH	NOMINAL CLEAR DOOR OPENING	DOOR PANEL NOMINAL WIDTH	EMERGENCY BREAKOUT NOM. WIDTH
84"	35.3"	41.5"	75.0"
96"	41.3"	47.5"	87.0"
108"	47.3"	53.5"	99.0"

**DURA-GLIDE  
GREENSTAR  
3000 SERIES**

SINGLE SLIDE RIGHT HAND WITH TRANSOM

PROJECT INFORMATION

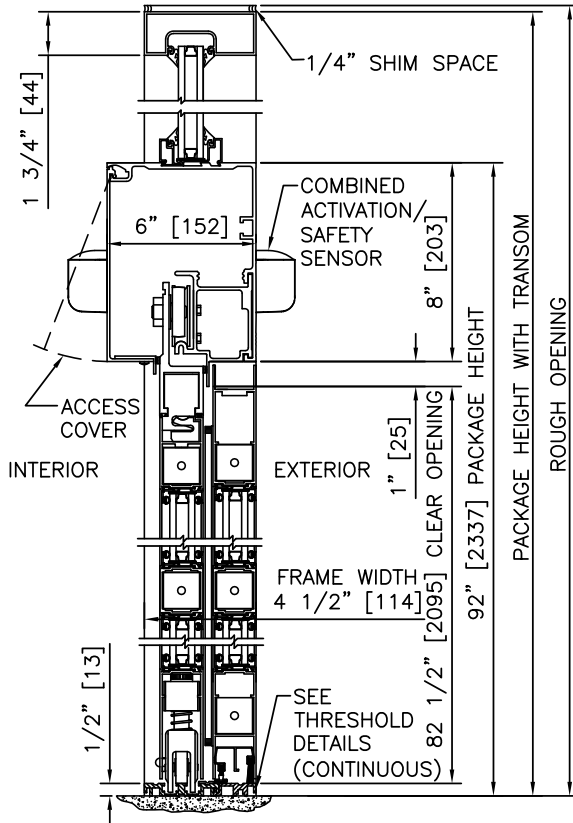
PROJECT NAME:

LOCATION:

DOOR NUMBER(S):

DATE:

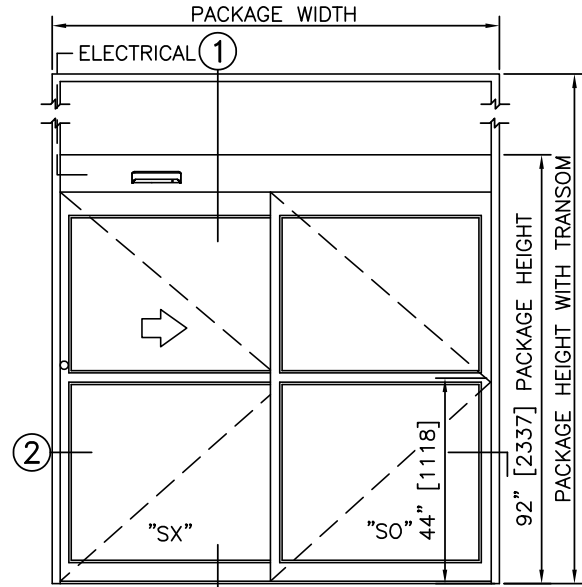
SHEET: OF



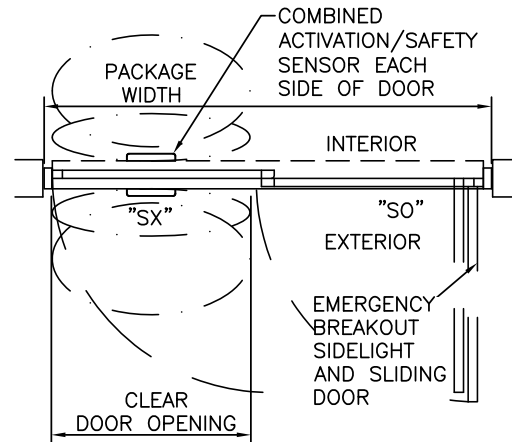
1 VERTICAL SECTION

NOTES

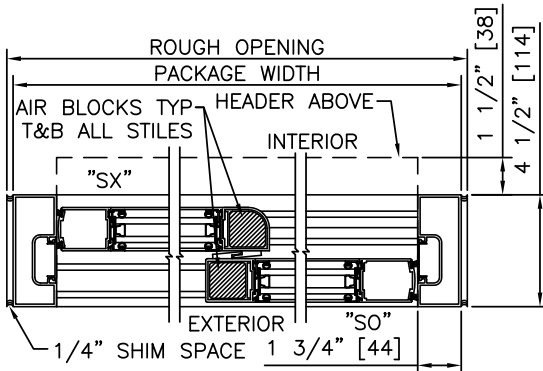
1. ELECTRICAL REQUIREMENTS: 120 VAC, 5 AMP MIN TO POWER OPERATOR BY ELECTRICAL CONTRACTOR.
2. ROUGH OPENING SHALL PROVIDE 1/4"[6] SHIM SPACE ON SIDES AND TOP OF PACKAGE.
3. LIMITS OF ACTIVATION AND SAFETY ZONES ARE FOR REFERENCE ONLY; SEE ANSI/BHMA A156.10 FOR DETAILED REQUIREMENTS.
4. AIR INFILTRATION RATING: LESS THAN 1.0 CFM/FT2 @ 1.57 PSF; PER ASTM E283 (NFRC 400), WITH GREENFIT SEALING SYSTEM.
5. SEE SPECIFICATIONS FOR ADDITIONAL INFORMATION.



ELEVATION



PLAN



2 HORIZONTAL SECTION

TYPICAL PACKAGE DIMENSIONS (NARROW STILE)			
PACKAGE WIDTH	NOMINAL CLEAR DOOR OPENING	DOOR PANEL NOMINAL WIDTH	EMERGENCY BREAKOUT NOM. WIDTH
84"	35.3"	41.5"	75.0"
96"	41.3"	47.5"	87.0"
108"	47.3"	53.5"	99.0"

**DURA-GLIDE  
GREENSTAR  
3000 SERIES**

SINGLE SLIDE LEFT HAND WITH TRANSON

PROJECT INFORMATION

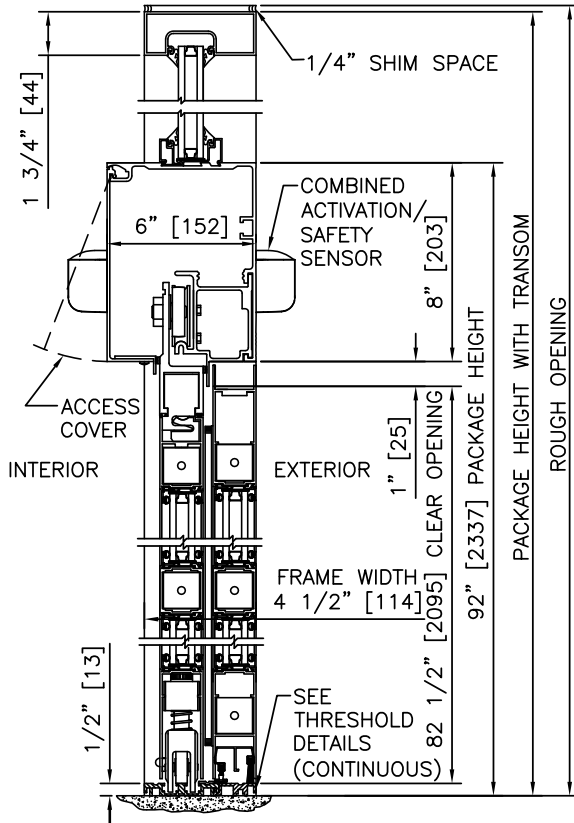
PROJECT NAME:

LOCATION:

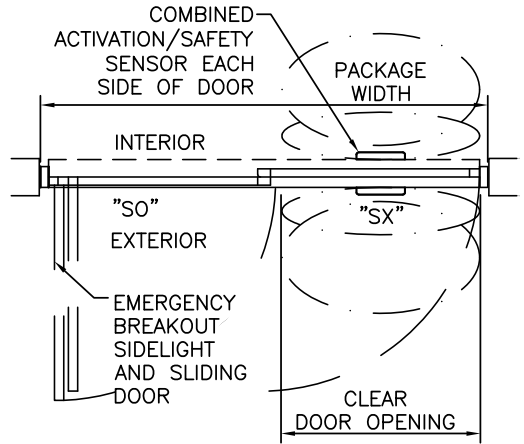
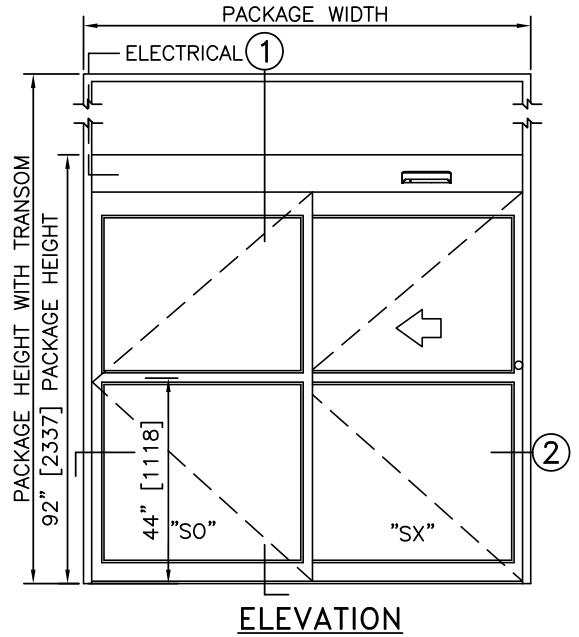
DOOR NUMBER(S):

DATE:

SHEET: OF

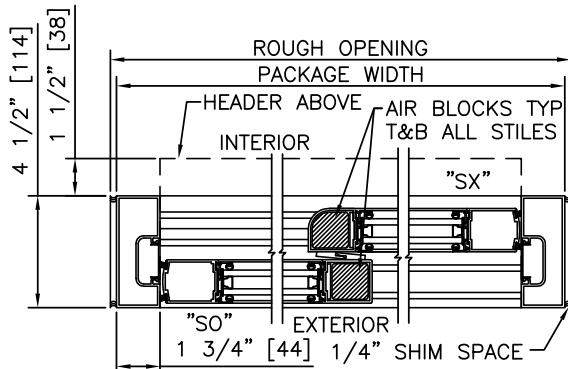


1 VERTICAL SECTION



NOTES

1. ELECTRICAL REQUIREMENTS: 120 VAC, 5 AMP MIN TO POWER OPERATOR BY ELECTRICAL CONTRACTOR.
2. ROUGH OPENING SHALL PROVIDE 1/4" [6] SHIM SPACE ON SIDES AND TOP OF PACKAGE.
3. LIMITS OF ACTIVATION AND SAFETY ZONES ARE FOR REFERENCE ONLY; SEE ANSI/BHMA A156.10 FOR DETAILED REQUIREMENTS.
4. AIR INFILTRATION RATING: LESS THAN 1.0 CFM/FT2 @ 1.57 PSF; PER ASTM E283 (NFRC 400), WITH GREENFIT SEALING SYSTEM.
5. SEE SPECIFICATIONS FOR ADDITIONAL INFORMATION.



2 HORIZONTAL SECTION

TYPICAL PACKAGE DIMENSIONS (NARROW STILE)			
PACKAGE WIDTH	NOMINAL CLEAR DOOR OPENING	DOOR PANEL NOMINAL WIDTH	EMERGENCY BREAKOUT NOM. WIDTH
84"	35.3"	41.5"	75.0"
96"	41.3"	47.5"	87.0"
108"	47.3"	53.5"	99.0"

**DURA-GLIDE  
GREENSTAR  
3000 SERIES**

SINGLE SLIDE RIGHT HAND WITH ACCESS CONTROL, SURFACE

PROJECT INFORMATION

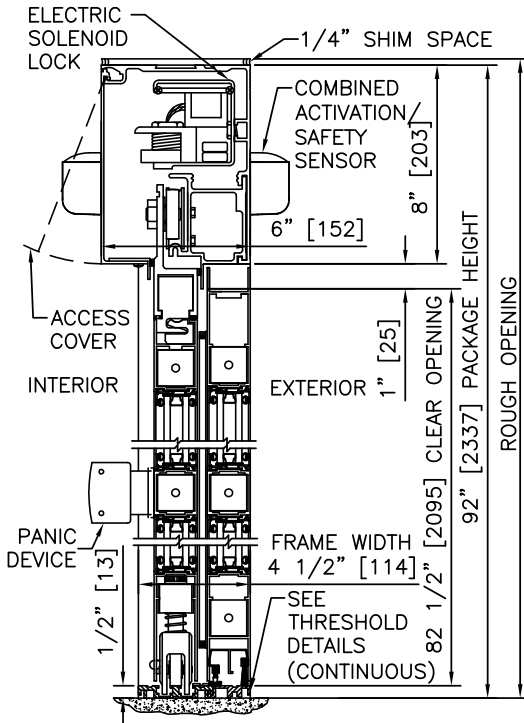
PROJECT NAME:

LOCATION:

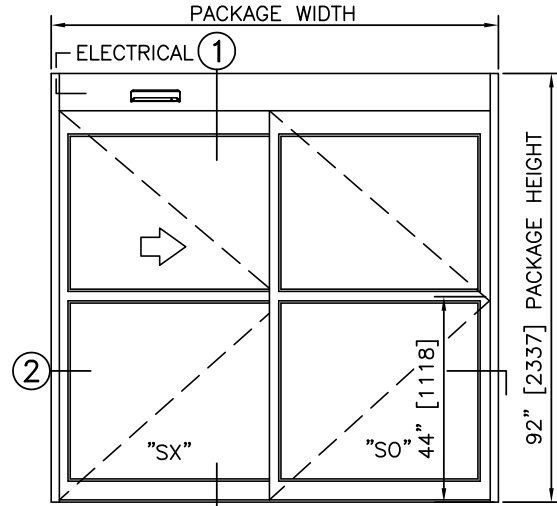
DOOR NUMBER(S):

DATE:

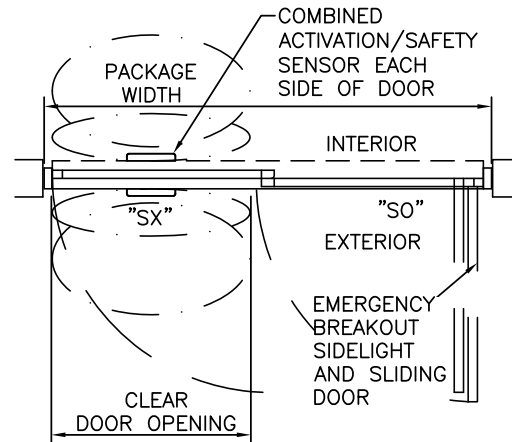
SHEET: OF



1 VERTICAL SECTION



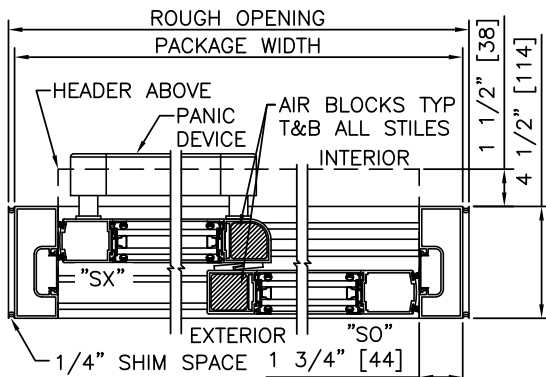
ELEVATION



PLAN

**NOTES**

1. ELECTRICAL REQUIREMENTS: BY ELECTRICAL CONTRACTOR
  - 1.1. 120 VAC, 5 AMP MIN TO POWER OPERATOR
  - 1.2. CONTROL CIRCUIT FROM SECURE ACTIVATION TO OPERATOR
2. ROUGH OPENING SHALL PROVIDE 1/4"[6] SHIM SPACE ON SIDES AND TOP OF PACKAGE.
3. LIMITS OF ACTIVATION AND SAFETY ZONES ARE FOR REFERENCE ONLY; SEE ANSI/BHMA A156.10 FOR DETAILED REQUIREMENTS.
4. AIR INFILTRATION RATING: LESS THAN 1.0 CFM/FT<sup>2</sup> @ 1.57 PSF; PER ASTM E283 (NFRC 400), WITH GREENFIT SEALING SYSTEM.
5. SEE SPECIFICATIONS FOR ADDITIONAL INFORMATION.



2 HORIZONTAL SECTION

TYPICAL PACKAGE DIMENSIONS (NARROW STILE)			
PACKAGE WIDTH	NOMINAL CLEAR DOOR OPENING	DOOR PANEL NOMINAL WIDTH	EMERGENCY BREAKOUT NOM. WIDTH
84"	35.3"	41.5"	75.0"
96"	41.3"	47.5"	87.0"
108"	47.3"	53.5"	99.0"

**DURA-GLIDE  
GREENSTAR  
3000 SERIES**

SINGLE SLIDE LEFT HAND WITH ACCESS CONTROL, SURFACE

PROJECT INFORMATION

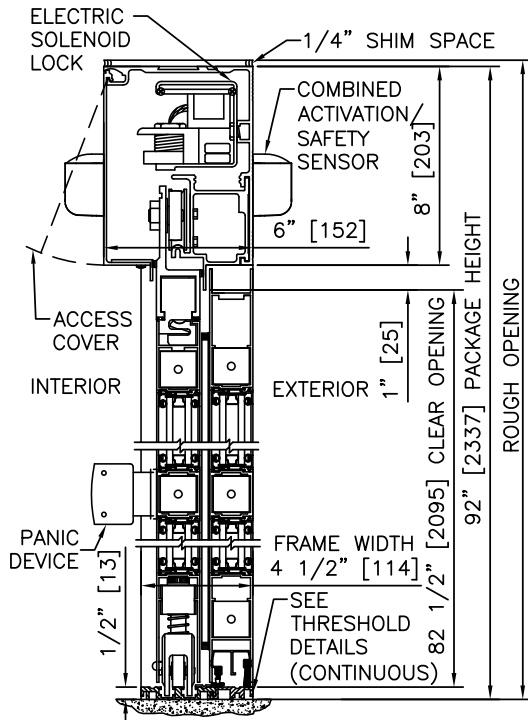
PROJECT NAME:

LOCATION:

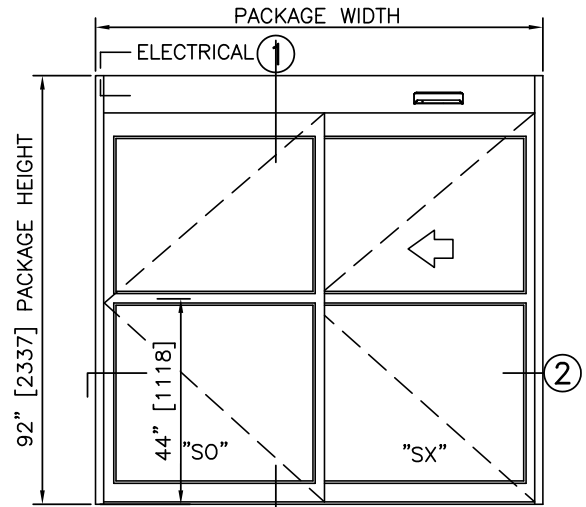
DOOR NUMBER(S):

DATE:

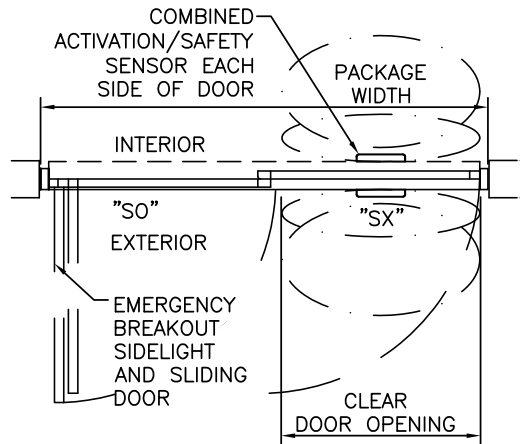
SHEET: OF



1 VERTICAL SECTION



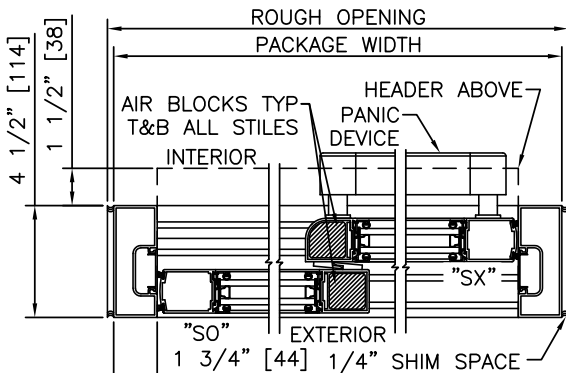
ELEVATION



PLAN

**NOTES**

1. ELECTRICAL REQUIREMENTS: BY ELECTRICAL CONTRACTOR
  - 1.1. 120 VAC, 5 AMP MIN TO POWER OPERATOR
  - 1.2. CONTROL CIRCUIT FROM SECURE ACTIVATION TO OPERATOR
2. ROUGH OPENING SHALL PROVIDE 1/4" [6] SHIM SPACE ON SIDES AND TOP OF PACKAGE.
3. LIMITS OF ACTIVATION AND SAFETY ZONES ARE FOR REFERENCE ONLY; SEE ANSI/BHMA A156.10 FOR DETAILED REQUIREMENTS.
4. AIR INFILTRATION RATING: LESS THAN 1.0 CFM/FT<sup>2</sup> @ 1.57 PSF; PER ASTM E283 (NFRC 400), WITH GREENFIT SEALING SYSTEM.
5. SEE SPECIFICATIONS FOR ADDITIONAL INFORMATION.



2 HORIZONTAL SECTION

TYPICAL PACKAGE DIMENSIONS (NARROW STILE)			
PACKAGE WIDTH	NOMINAL CLEAR DOOR OPENING	DOOR PANEL NOMINAL WIDTH	EMERGENCY BREAKOUT NOM. WIDTH
84"	35.3"	41.5"	75.0"
96"	41.3"	47.5"	87.0"
108"	47.3"	53.5"	99.0"



**DURA-GLIDE  
GREENSTAR  
3000 SERIES**

SINGLE SLIDE RIGHT HAND WITH TRANSOM & ACCESS CONTROL, SURFACE

PROJECT INFORMATION

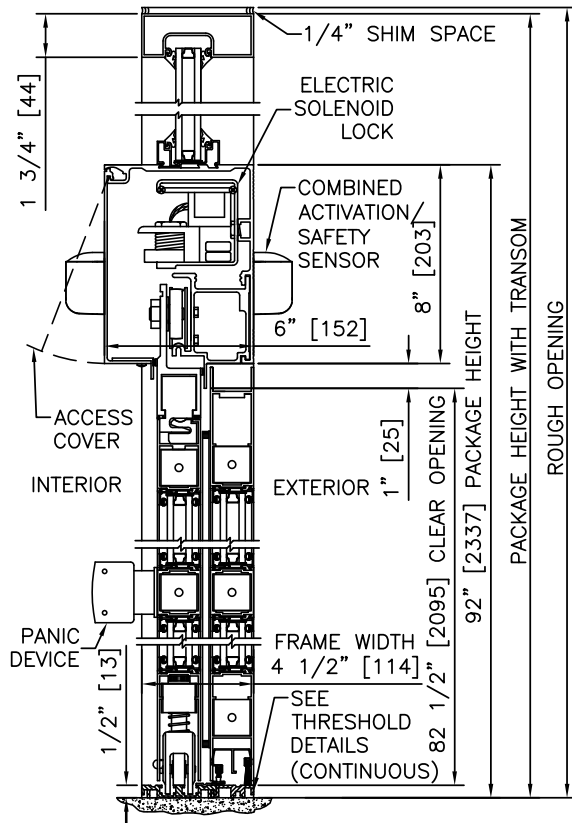
PROJECT NAME:

LOCATION:

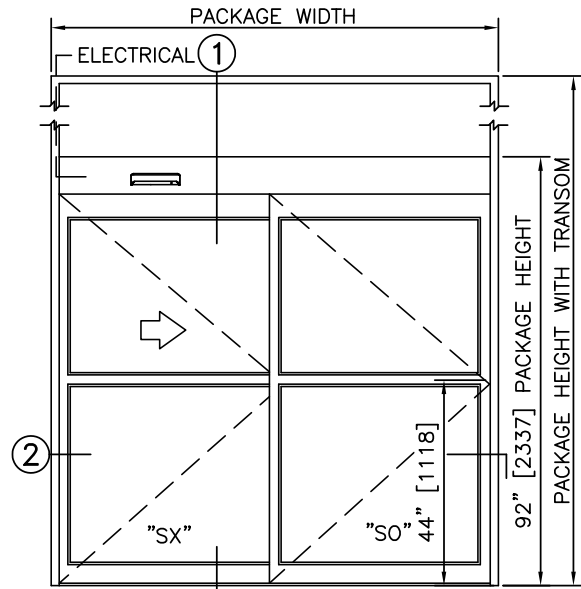
DOOR NUMBER(S):

DATE:

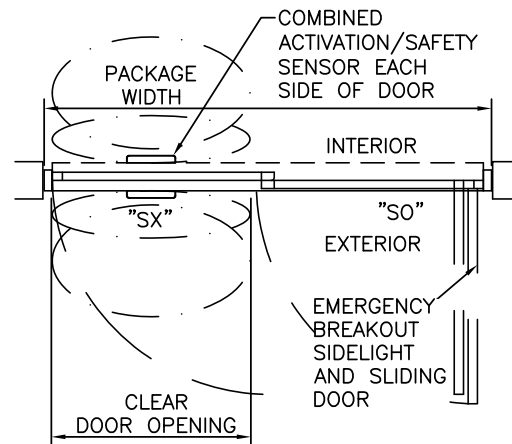
SHEET: OF



1 VERTICAL SECTION



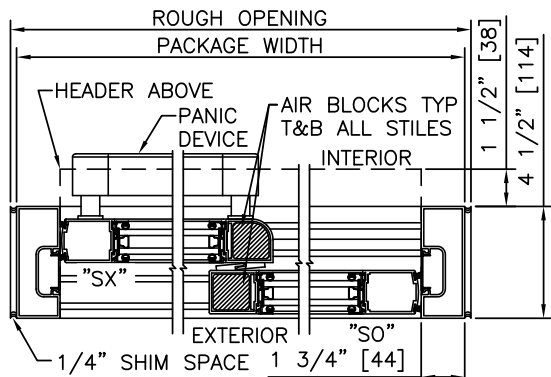
ELEVATION



PLAN

NOTES

1. ELECTRICAL REQUIREMENTS: BY ELECTRICAL CONTRACTOR
  - 1.1. 120 VAC, 5 AMP MIN TO POWER OPERATOR
  - 1.2. CONTROL CIRCUIT FROM SECURE ACTIVATION TO OPERATOR
2. ROUGH OPENING SHALL PROVIDE 1/4"[6] SHIM SPACE ON SIDES AND TOP OF PACKAGE.
3. LIMITS OF ACTIVATION AND SAFETY ZONES ARE FOR REFERENCE ONLY; SEE ANSI/BHMA A156.10 FOR DETAILED REQUIREMENTS.
4. AIR INFILTRATION RATING: LESS THAN 1.0 CFM/FT2 @ 1.57 PSF; PER ASTM E283 (NFRC 400), WITH GREENFIT SEALING SYSTEM.
5. SEE SPECIFICATIONS FOR ADDITIONAL INFORMATION.



2 HORIZONTAL SECTION

TYPICAL PACKAGE DIMENSIONS (NARROW STILE)			
PACKAGE WIDTH	NOMINAL CLEAR DOOR OPENING	DOOR PANEL NOMINAL WIDTH	EMERGENCY BREAKOUT NOM. WIDTH
84"	35.3"	41.5"	75.0"
96"	41.3"	47.5"	87.0"
108"	47.3"	53.5"	99.0"

**DURA-GLIDE  
GREENSTAR  
3000 SERIES**

SINGLE SLIDE LEFT HAND WITH TRANSOM & ACCESS CONTROL, SURFACE

PROJECT INFORMATION

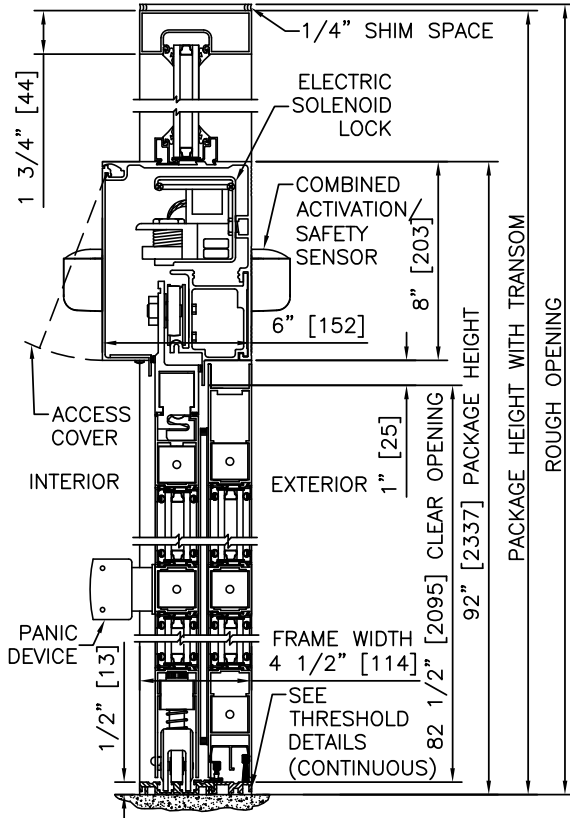
PROJECT NAME:

LOCATION:

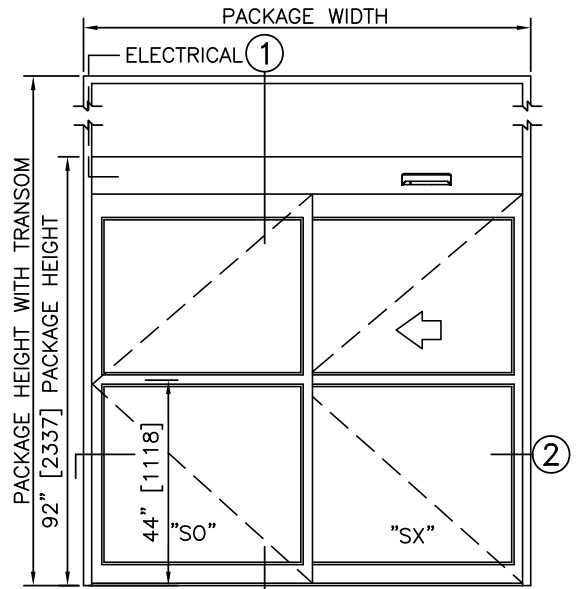
DOOR NUMBER(S):

DATE:

SHEET: OF



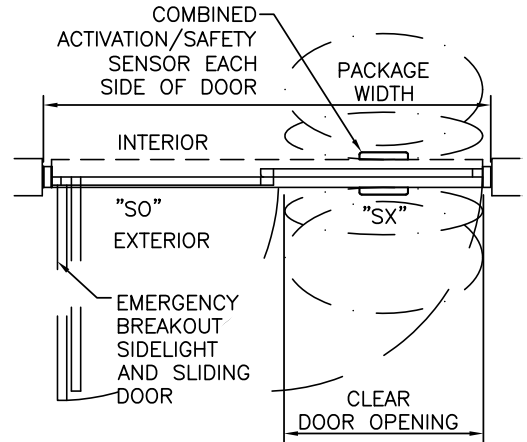
1 VERTICAL SECTION



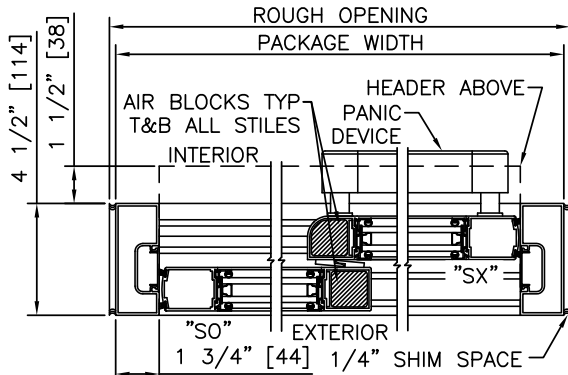
ELEVATION

NOTES

1. ELECTRICAL REQUIREMENTS: BY ELECTRICAL CONTRACTOR
  - 1.1. 120 VAC, 5 AMP MIN TO POWER OPERATOR
  - 1.2. CONTROL CIRCUIT FROM SECURE ACTIVATION TO OPERATOR
2. ROUGH OPENING SHALL PROVIDE 1/4"[6] SHIM SPACE ON SIDES AND TOP OF PACKAGE.
3. LIMITS OF ACTIVATION AND SAFETY ZONES ARE FOR REFERENCE ONLY; SEE ANSI/BHMA A156.10 FOR DETAILED REQUIREMENTS.
4. AIR INFILTRATION RATING: LESS THAN 1.0 CFM/FT<sup>2</sup> @ 1.57 PSF; PER ASTM E283 (NFRC 400), WITH GREENFIT SEALING SYSTEM.
5. SEE SPECIFICATIONS FOR ADDITIONAL INFORMATION.



PLAN



2 HORIZONTAL SECTION

TYPICAL PACKAGE DIMENSIONS (NARROW STILE)			
PACKAGE WIDTH	NOMINAL CLEAR DOOR OPENING	DOOR PANEL NOMINAL WIDTH	EMERGENCY BREAKOUT NOM. WIDTH
84"	35.3"	41.5"	75.0"
96"	41.3"	47.5"	87.0"
108"	47.3"	53.5"	99.0"

**DURA-GLIDE  
GREENSTAR  
3000 SERIES**

SINGLE SLIDE RIGHT HAND WITH ACCESS CONTROL, RECESSED

PROJECT INFORMATION

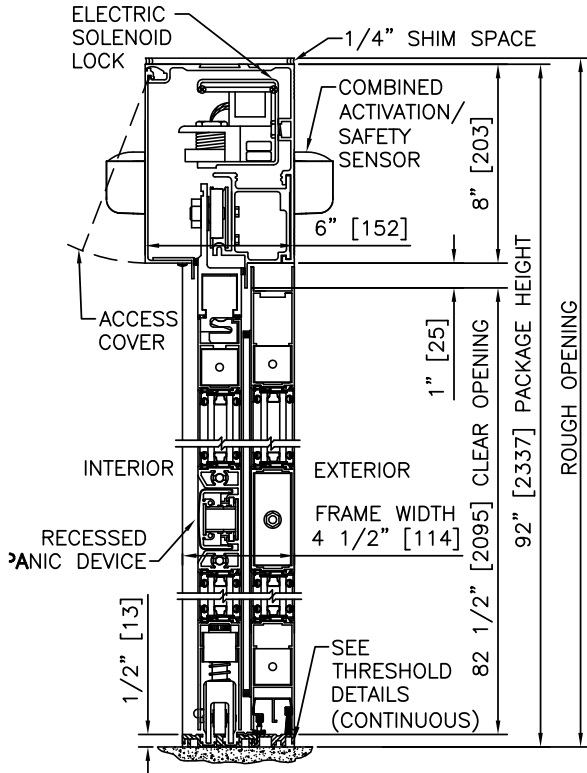
PROJECT NAME:

LOCATION:

DOOR NUMBER(S):

DATE:

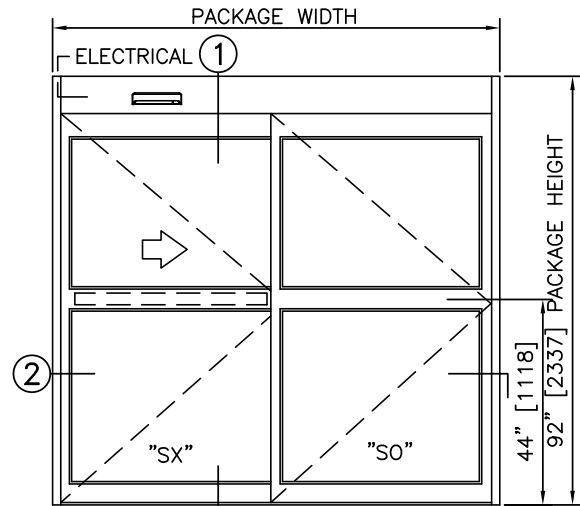
SHEET: OF



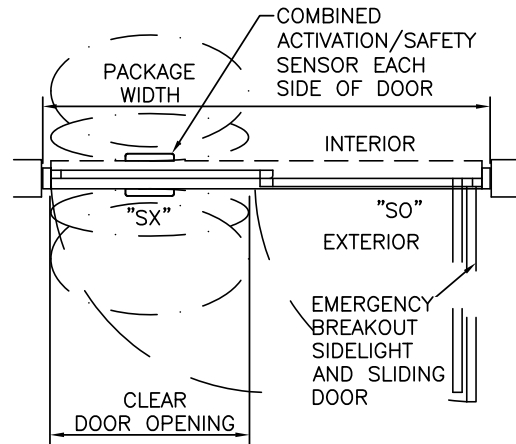
① VERTICAL SECTION

**NOTES**

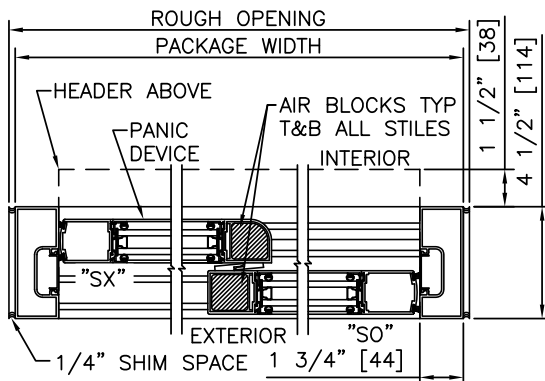
1. ELECTRICAL REQUIREMENTS: BY ELECTRICAL CONTRACTOR
  - 1.1. 120 VAC, 5 AMP MIN TO POWER OPERATOR
  - 1.2. CONTROL CIRCUIT FROM SECURE ACTIVATION TO OPERATOR
2. ROUGH OPENING SHALL PROVIDE 1/4"[6] SHIM SPACE ON SIDES AND TOP OF PACKAGE.
3. LIMITS OF ACTIVATION AND SAFETY ZONES ARE FOR REFERENCE ONLY; SEE ANSI/BHMA A156.10 FOR DETAILED REQUIREMENTS.
4. AIR INFILTRATION RATING: LESS THAN 1.0 CFM/FT2 @ 1.57 PSF; PER ASTM E283 (NFRC 400), WITH GREENFIT SEALING SYSTEM.
5. SEE SPECIFICATIONS FOR ADDITIONAL INFORMATION.



ELEVATION

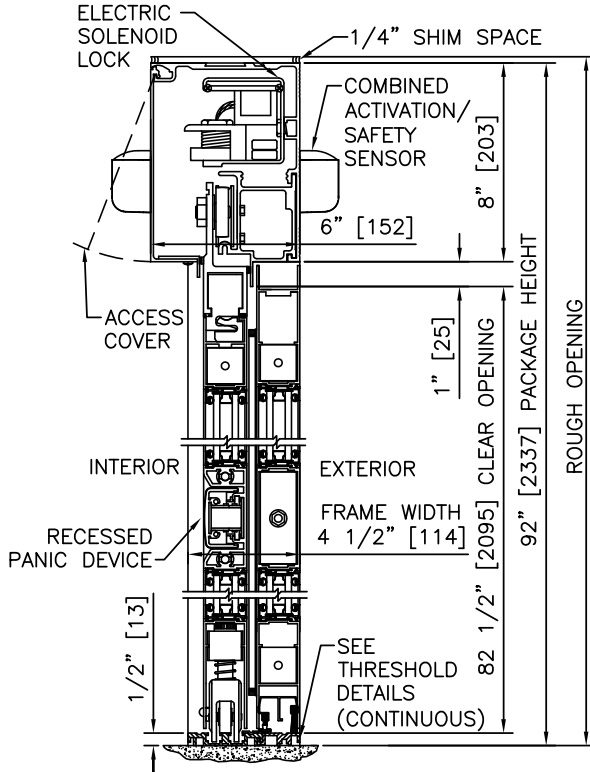


PLAN

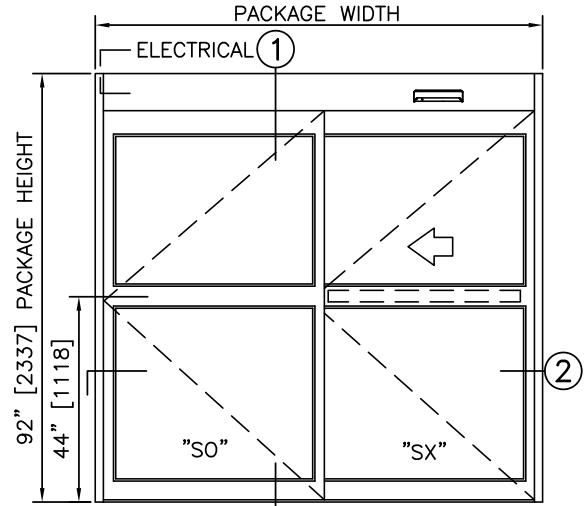


② HORIZONTAL SECTION

TYPICAL PACKAGE DIMENSIONS (NARROW STILE)			
PACKAGE WIDTH	NOMINAL CLEAR DOOR OPENING	DOOR PANEL NOMINAL WIDTH	EMERGENCY BREAKOUT NOM. WIDTH
84"	35.3"	41.5"	75.0"
96"	41.3"	47.5"	87.0"
108"	47.3"	53.5"	99.0"



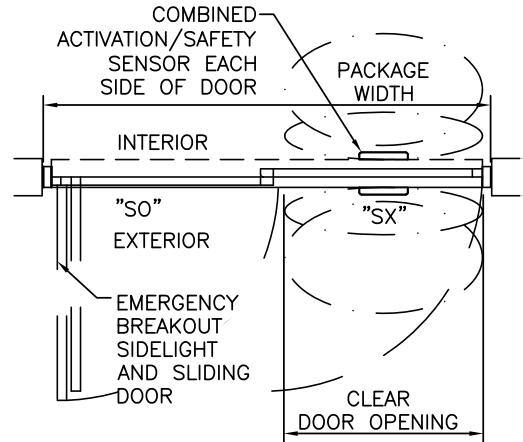
1 VERTICAL SECTION



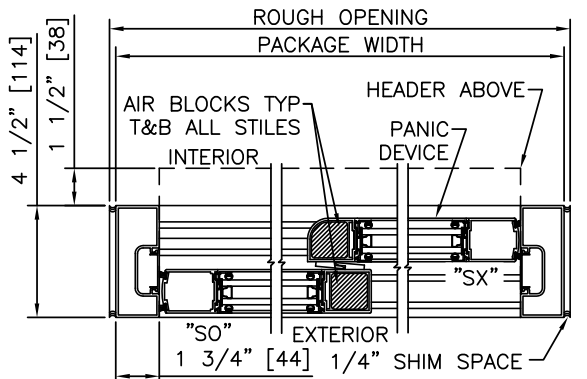
ELEVATION

**NOTES**

1. ELECTRICAL REQUIREMENTS: BY ELECTRICAL CONTRACTOR
  - 1.1. 120 VAC, 5 AMP MIN TO POWER OPERATOR
  - 1.2. CONTROL CIRCUIT FROM SECURE ACTIVATION TO OPERATOR
2. ROUGH OPENING SHALL PROVIDE 1/4" [6] SHIM SPACE ON SIDES AND TOP OF PACKAGE.
3. LIMITS OF ACTIVATION AND SAFETY ZONES ARE FOR REFERENCE ONLY; SEE ANSI/BHMA A156.10 FOR DETAILED REQUIREMENTS.
4. AIR INFILTRATION RATING: LESS THAN 1.0 CFM/FT<sup>2</sup> @ 1.57 PSF; PER ASTM E283 (NFRC 400), WITH GREENFIT SEALING SYSTEM.
5. SEE SPECIFICATIONS FOR ADDITIONAL INFORMATION.



PLAN



2 HORIZONTAL SECTION

TYPICAL PACKAGE DIMENSIONS (NARROW STILE)			
PACKAGE WIDTH	NOMINAL CLEAR DOOR OPENING	DOOR PANEL NOMINAL WIDTH	EMERGENCY BREAKOUT NOM. WIDTH
84"	35.3"	41.5"	75.0"
96"	41.3"	47.5"	87.0"
108"	47.3"	53.5"	99.0"

**DURA-GLIDE  
GREENSTAR  
3000 SERIES**

SINGLE SLIDE RIGHT HAND WITH TRANSOM & ACCESS CONTROL, RECESSED

PROJECT INFORMATION

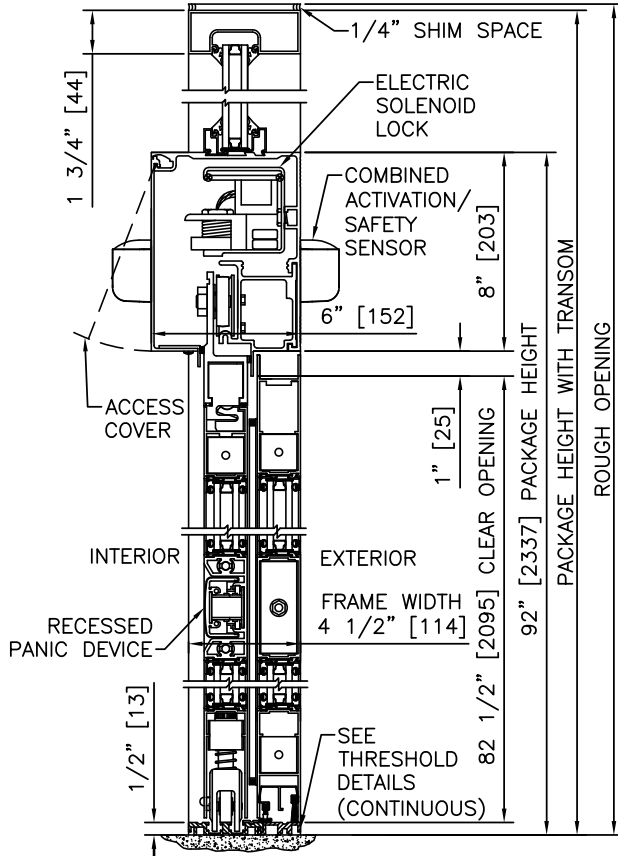
PROJECT NAME:

LOCATION:

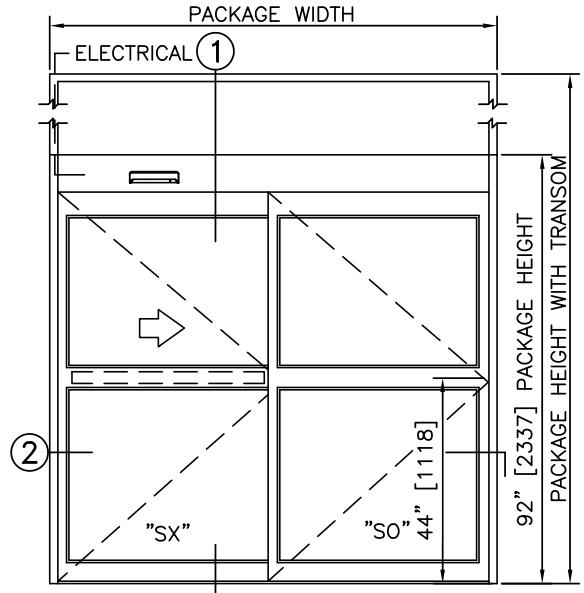
DOOR NUMBER(S):

DATE:

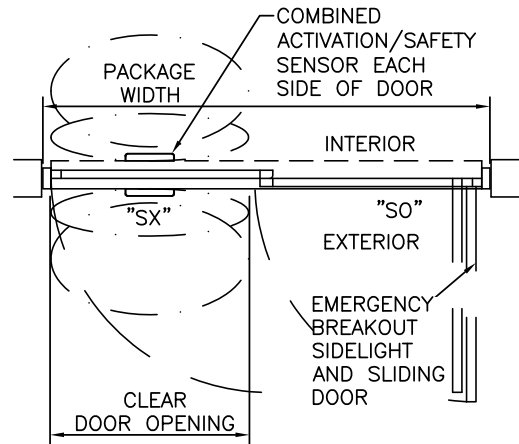
SHEET: OF



1 VERTICAL SECTION



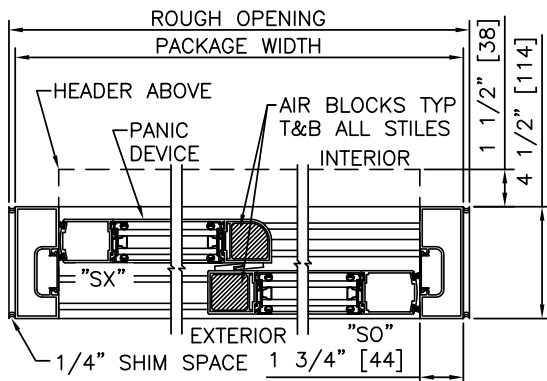
ELEVATION



PLAN

NOTES

1. ELECTRICAL REQUIREMENTS: BY ELECTRICAL CONTRACTOR
  - 1.1. 120 VAC, 5 AMP MIN TO POWER OPERATOR
  - 1.2. CONTROL CIRCUIT FROM SECURE ACTIVATION TO OPERATOR
2. ROUGH OPENING SHALL PROVIDE 1/4"[6] SHIM SPACE ON SIDES AND TOP OF PACKAGE.
3. LIMITS OF ACTIVATION AND SAFETY ZONES ARE FOR REFERENCE ONLY; SEE ANSI/BHMA A156.10 FOR DETAILED REQUIREMENTS.
4. AIR INFILTRATION RATING: LESS THAN 1.0 CFM/FT<sup>2</sup> @ 1.57 PSF; PER ASTM E283 (NFRC 400), WITH GREENFIT SEALING SYSTEM.
5. SEE SPECIFICATIONS FOR ADDITIONAL INFORMATION.



2 HORIZONTAL SECTION

TYPICAL PACKAGE DIMENSIONS (NARROW STILE)			
PACKAGE WIDTH	NOMINAL CLEAR DOOR OPENING	DOOR PANEL NOMINAL WIDTH	EMERGENCY BREAKOUT NOM. WIDTH
84"	35.3"	41.5"	75.0"
96"	41.3"	47.5"	87.0"
108"	47.3"	53.5"	99.0"

**DURA-GLIDE  
GREENSTAR  
3000 SERIES**

SINGLE SLIDE LEFT HAND WITH TRANSOM & ACCESS CONTROL, RECESSED

PROJECT INFORMATION

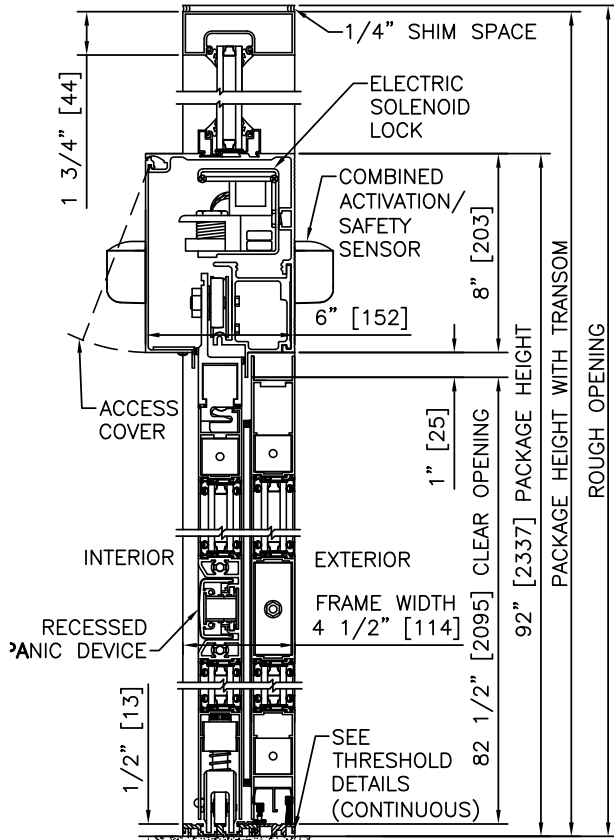
PROJECT NAME:

LOCATION:

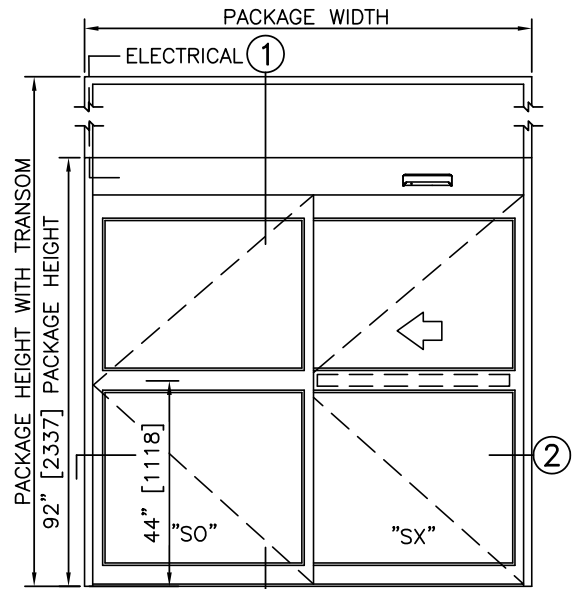
DOOR NUMBER(S):

DATE:

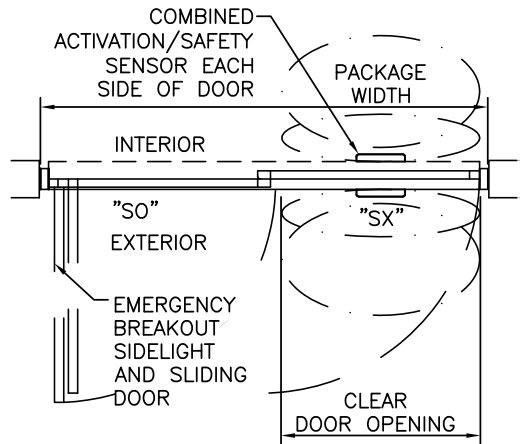
SHEET: OF



1 VERTICAL SECTION



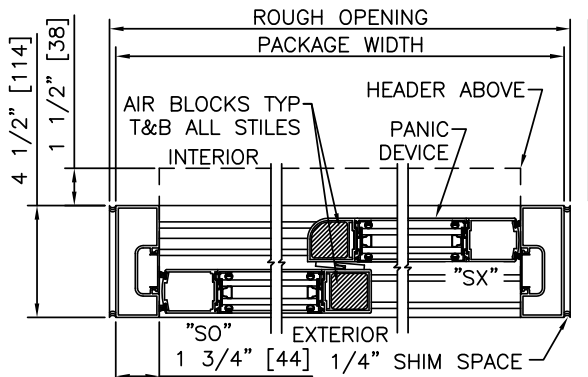
ELEVATION



PLAN

NOTES

1. ELECTRICAL REQUIREMENTS: BY ELECTRICAL CONTRACTOR
  - 1.1. 120 VAC, 5 AMP MIN TO POWER OPERATOR
  - 1.2. CONTROL CIRCUIT FROM SECURE ACTIVATION TO OPERATOR
2. ROUGH OPENING SHALL PROVIDE 1/4"[6] SHIM SPACE ON SIDES AND TOP OF PACKAGE.
3. LIMITS OF ACTIVATION AND SAFETY ZONES ARE FOR REFERENCE ONLY; SEE ANSI/BHMA A156.10 FOR DETAILED REQUIREMENTS.
4. AIR INFILTRATION RATING: LESS THAN 1.0 CFM/FT<sup>2</sup> @ 1.57 PSF; PER ASTM E283 (NFRC 400), WITH GREENFIT SEALING SYSTEM.
5. SEE SPECIFICATIONS FOR ADDITIONAL INFORMATION.



2 HORIZONTAL SECTION

TYPICAL PACKAGE DIMENSIONS (NARROW STILE)			
PACKAGE WIDTH	NOMINAL CLEAR DOOR OPENING	DOOR PANEL NOMINAL WIDTH	EMERGENCY BREAKOUT NOM. WIDTH
84"	35.3"	41.5"	75.0"
96"	41.3"	47.5"	87.0"
108"	47.3"	53.5"	99.0"