



SLIDING AUTOMATIC ENTRANCES: DURA-GLIDE™ 2000, BI-PARTING

1.24 - BI-PART WITH OPTIONAL TRANSOM

- **1.24.01 - Bi-Parting**
- **1.24.02 - Bi-Parting with Transom**
- **1.24.03 - Bi-Parting with Access Control, Surface Applied**
- **1.24.04 - Bi-Parting with Transom and Access Control, Surface Applied**
- **1.24.05 - Bi-Parting with Access Control, Recessed**
- **1.24.06 - Bi-Parting with Transom and Access Control, Recessed**

STANLEY
Access Technologies

**DURA-GLIDE
GREENSTAR
3000 SERIES**

BI-PART WITH OPTIONAL TRANSOM

PROJECT INFORMATION

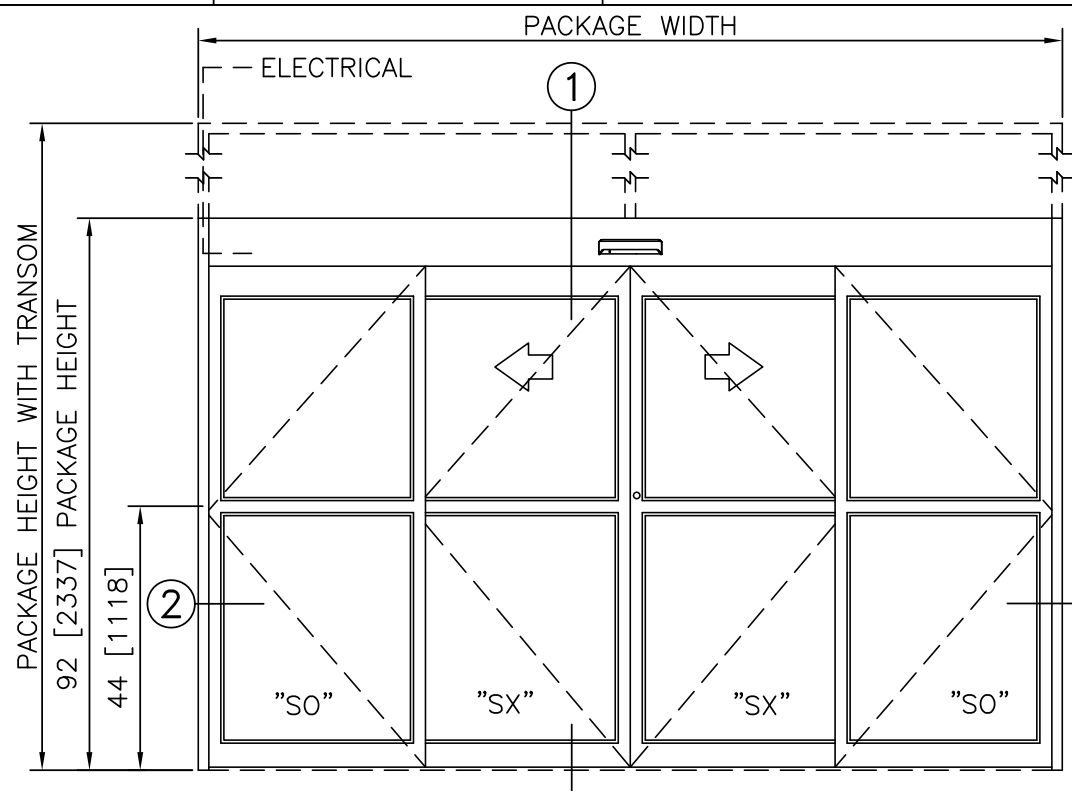
PROJECT NAME:

LOCATION:

DOOR NUMBER(S):

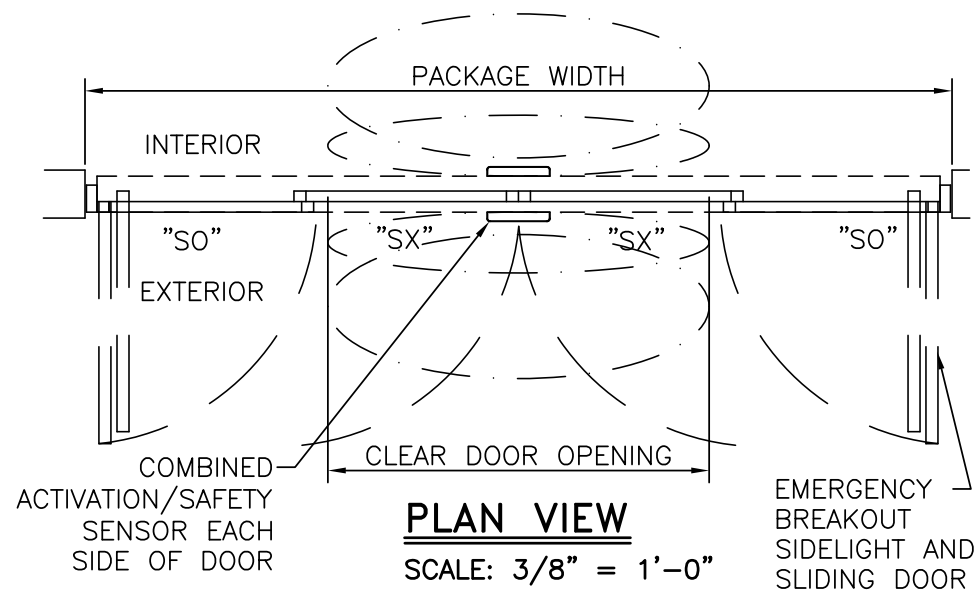
DATE:

SHEET: OF



ELEVATION VIEW

SCALE: 3/8" = 1'-0"

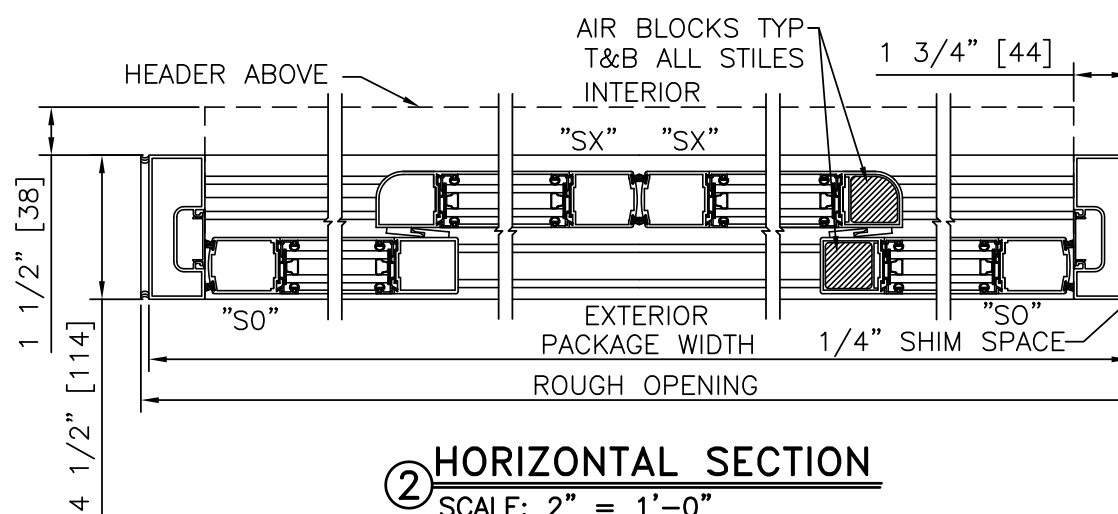


PLAN VIEW

SCALE: 3/8" = 1'-0"

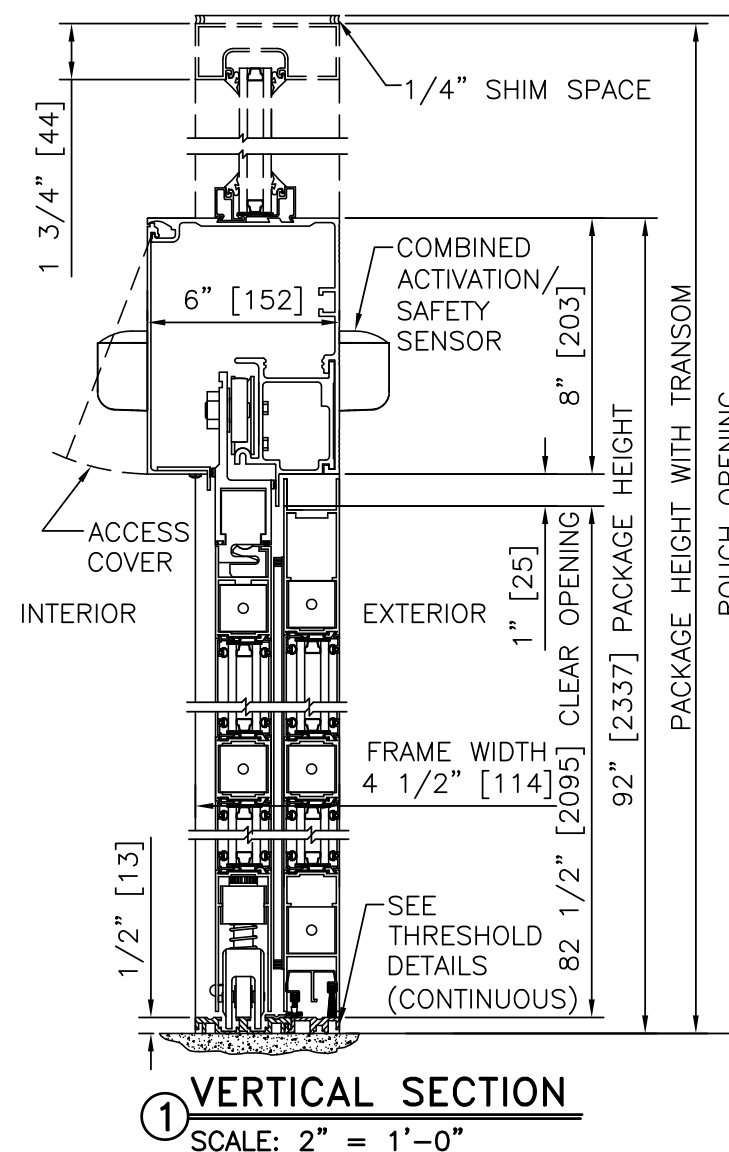
NOTES

- ELECTRICAL REQUIREMENTS: 120 VAC, 5 AMP MIN TO POWER OPERATOR BY ELECTRICAL CONTRACTOR.
- ROUGH OPENING SHALL PROVIDE 1/4"[6] SHIM SPACE ON SIDES AND TOP OF PACKAGE.
- LIMITS OF ACTIVATION AND SAFETY ZONES ARE FOR REFERENCE ONLY; SEE ANSI/BHMA A156.10 FOR DETAILED REQUIREMENTS.
- STANDARD LOCKING IS 2-POINT, 3-POINT AND ACCESS CONTROL SYSTEMS AVAILABLE. SEE SHEET 1.60.
- STANDARD GLAZING STOPS FOR SLIDING AND FIXED PANELS ARE 1"[25].
- STANDARD JAMB TUBES SHOWN; 6"[152] AVAILABLE.
- STANDARD STILES, BOTTOM RAILS AND MUNTINS SHOWN; MEDIUM STILES, BOTTOM RAILS TO 12"[305], AND 4 1/4"[108] MUNTINS AVAILABLE.
- AIR INFILTRATION RATING: LESS THAN 1.0 CFM/FT2 @ 1.57 PSF; PER ASTM E283 (NFRC 400), WITH GREENFIT SEALING SYSTEM.
- SEE SPECIFICATIONS FOR ADDITIONAL INFORMATION.



HORIZONTAL SECTION

SCALE: 2" = 1'-0"



VERTICAL SECTION

SCALE: 2" = 1'-0"

PRODUCT OPTIONS

- TRANSOM
 YES
 VERTICALS 1 2 3
- FINISH
 ANODIZED CLEAR CL2
 ANODIZED DK BRONZE
 CUSTOM
- LOCKING
 2-POINT
 ACCESS CONTROL (PANIC) 3-POINT
- STILES
 NARROW MEDIUM
- BOTTOM RAILS
 STANDARD 4"
 OPTIONAL 6" 8" 10" 12"
- THRESHOLDS
 SQ/BVL (EXT) SQ/BVL (INT)
 DBL BVL RECESSED
- ACTIVATION/SAFETY
 2 COMBINED ACTIVATION/SAFETY SENSORS
- OTHER OPTIONS
 ROTARY CTRL SWITCH KEYED
 UNINTERRUPTIBLE POWER SUPPLY
 FLY OPEN BOX
 WIND DAMPERS
 PANEL CLOSERS
 MAGNETIC LATCHING (BREAKOUT)
 ALARM CONTACTS

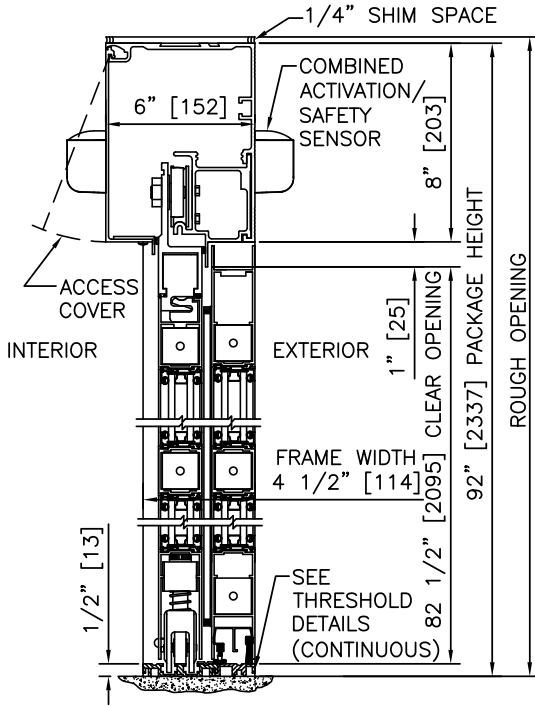
BI-PART FORMULAS - NARROW STILE
 PACKAGE WIDTH = 2 X CLEAR DOOR OPENING + 23.4"
 CLEAR DOOR OPENING = 1/2 PACKAGE WIDTH - 11.7"
 EMERGENCY BREAKOUT WIDTH = PACKAGE WIDTH - 14.5"
 DOOR PANEL WIDTH = 1/4 PACKAGE WIDTH + 0.3"

BI-PART FORMULAS - MEDIUM STILE
 PACKAGE WIDTH = 2 X CLEAR DOOR OPENING + 32.1"
 CLEAR DOOR OPENING = 1/2 PACKAGE WIDTH - 16.0"
 EMERGENCY BREAKOUT WIDTH = PACKAGE WIDTH - 17.5"
 DOOR PANEL WIDTH = 1/4 PACKAGE WIDTH + 1.1"

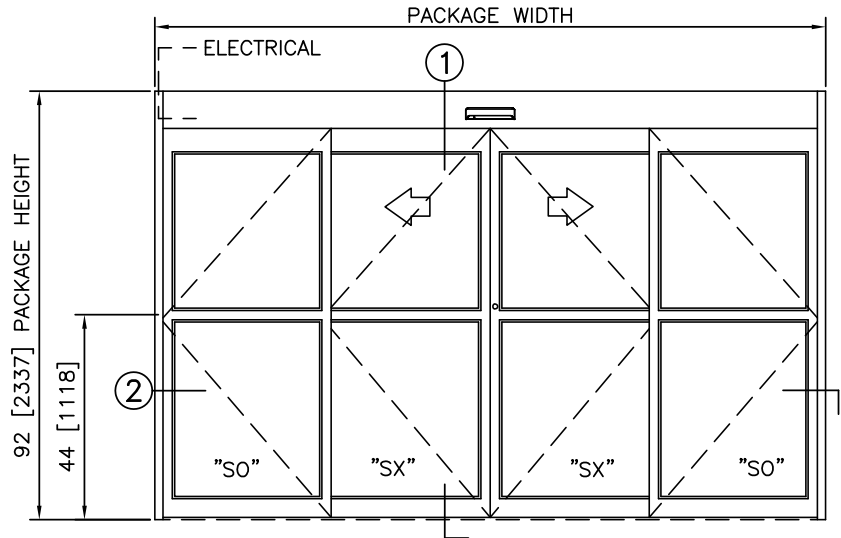
TYPICAL PACKAGE DIMENSIONS (NARROW STILE)			
PACKAGE WIDTH	NOMINAL CLEAR DOOR OPENING	DOOR PANEL NOMINAL WIDTH	EMERGENCY BREAKOUT NOM. WIDTH
120"	48.3"	30.3"	105.5"
144"	60.3"	36.3"	129.5"
168"	72.3"	42.3"	153.5"

**DURA-GLIDE
GREENSTAR
3000 SERIES**

STANLEY
Access Technologies



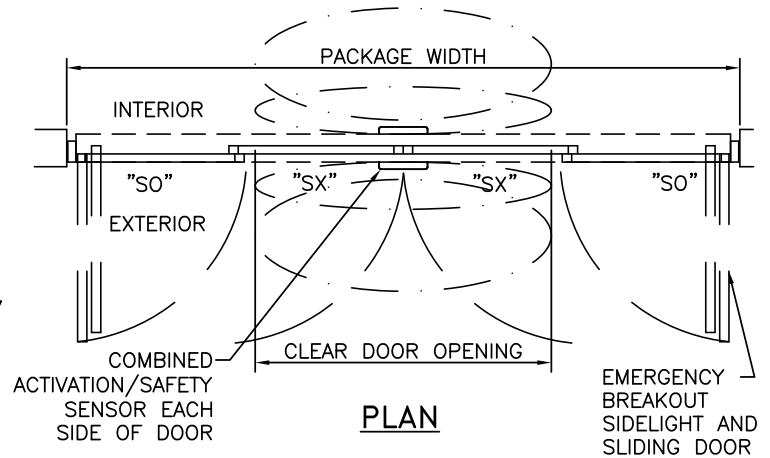
① VERTICAL SECTION



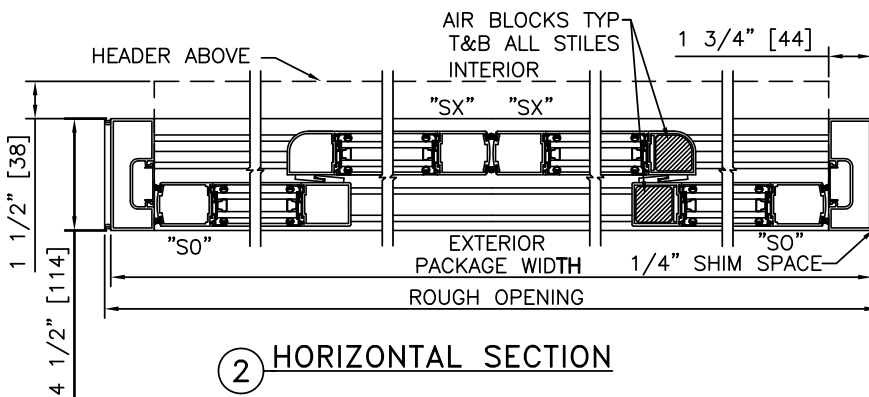
ELEVATION

NOTES

1. ELECTRICAL REQUIREMENTS: 120 VAC, 5 AMP MIN TO POWER OPERATOR BY ELECTRICAL CONTRACTOR.
2. ROUGH OPENING SHALL PROVIDE 1/4"[6] SHIM SPACE ON SIDES AND TOP OF PACKAGE.
3. LIMITS OF ACTIVATION AND SAFETY ZONES ARE FOR REFERENCE ONLY; SEE ANSI/BHMA A156.10 FOR DETAILED REQUIREMENTS.
4. AIR INFILTRATION RATING: LESS THAN 1.0 CFM/FT² @ 1.57 PSF; PER ASTM E283 (NFRC 400), WITH GREENFIT SEALING SYSTEM.
5. SEE SPECIFICATIONS FOR ADDITIONAL INFORMATION.

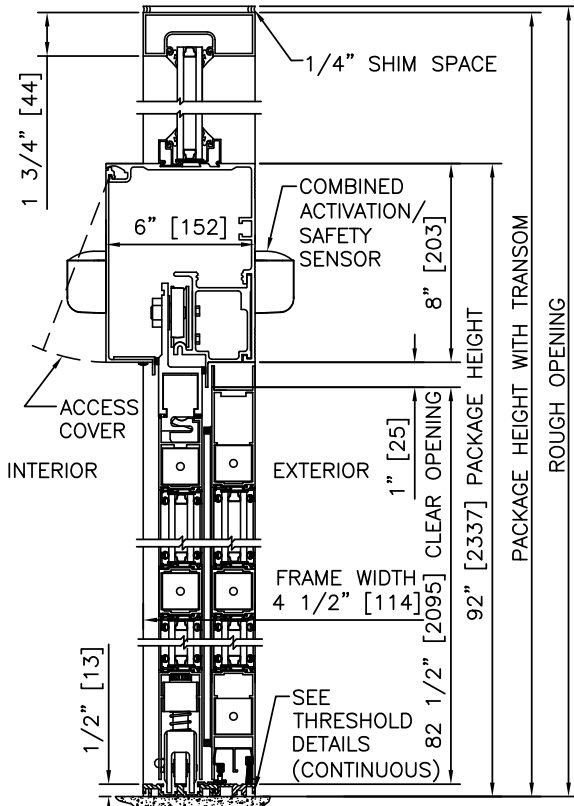


PLAN

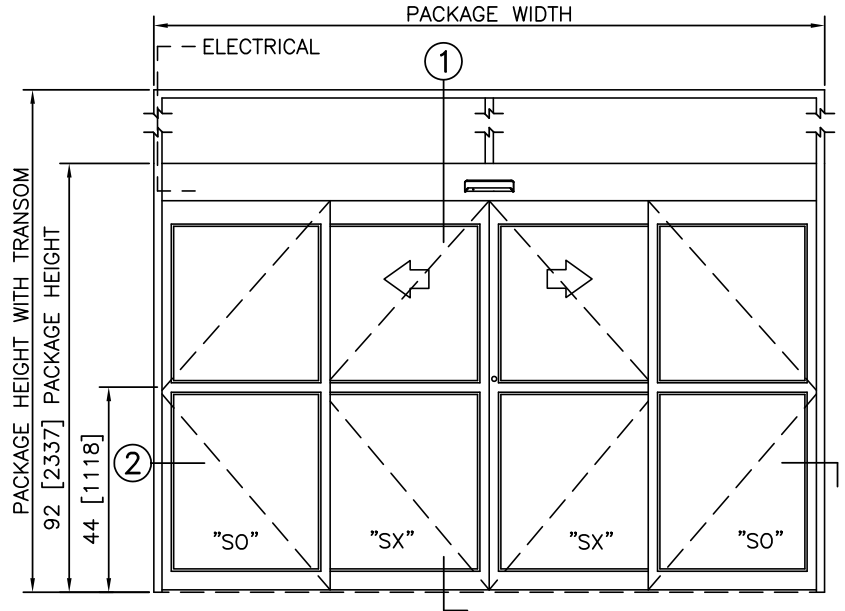


② HORIZONTAL SECTION

TYPICAL PACKAGE DIMENSIONS (NARROW STILE)			
PACKAGE WIDTH	NOMINAL CLEAR DOOR OPENING	DOOR PANEL NOMINAL WIDTH	EMERGENCY BREAKOUT NOM. WIDTH
120"	48.3"	30.3"	105.5"
144"	60.3"	36.3"	129.5"
168"	72.3"	42.3"	153.5"



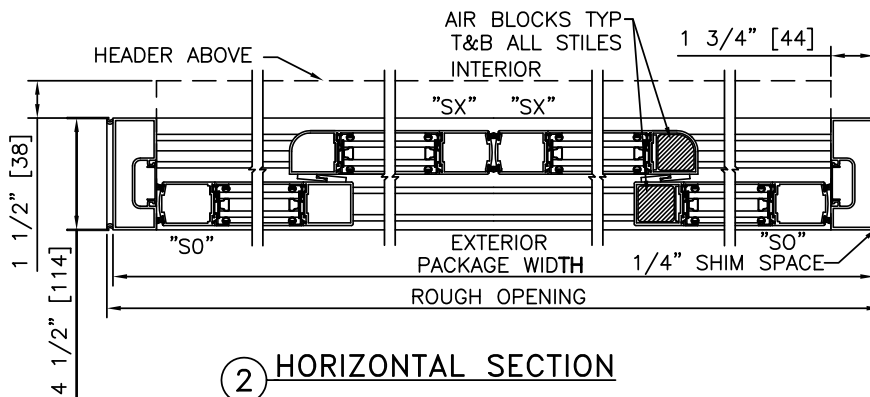
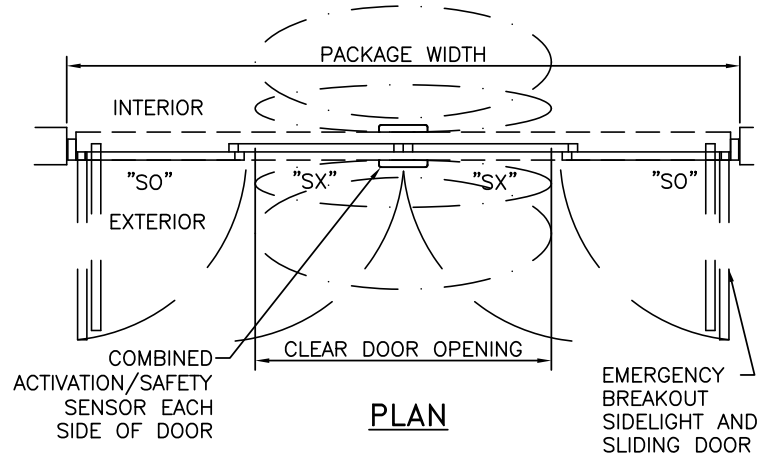
1 VERTICAL SECTION



ELEVATION

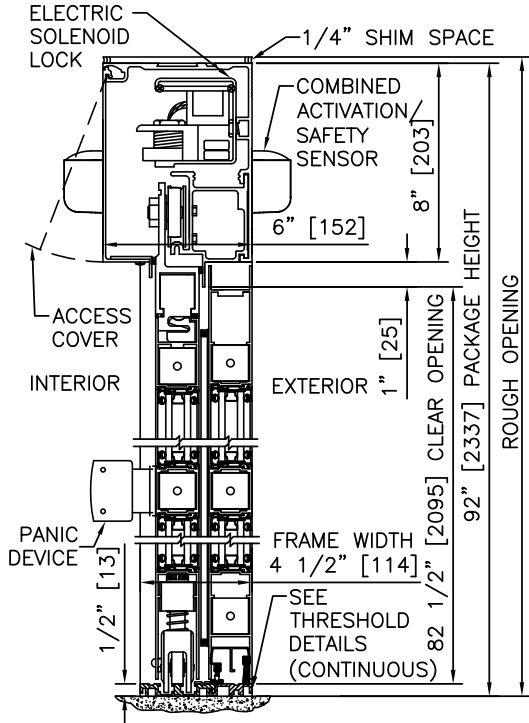
NOTES

1. ELECTRICAL REQUIREMENTS: 120 VAC, 5 AMP MIN TO POWER OPERATOR BY ELECTRICAL CONTRACTOR.
2. ROUGH OPENING SHALL PROVIDE 1/4"[6] SHIM SPACE ON SIDES AND TOP OF PACKAGE.
3. LIMITS OF ACTIVATION AND SAFETY ZONES ARE FOR REFERENCE ONLY; SEE ANSI/BHMA A156.10 FOR DETAILED REQUIREMENTS.
4. AIR INFILTRATION RATING: LESS THAN 1.0 CFM/FT² @ 1.57 PSF; PER ASTM E283 (NFRC 400), WITH GREENFIT SEALING SYSTEM.
5. SEE SPECIFICATIONS FOR ADDITIONAL INFORMATION.

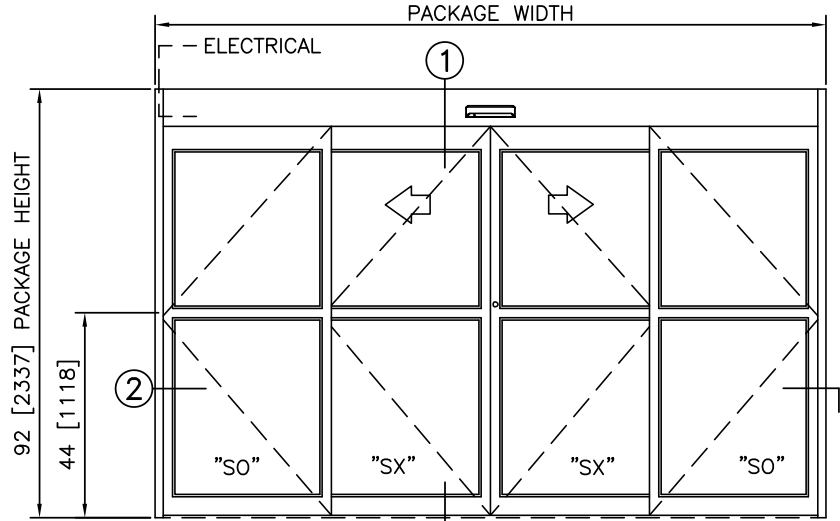


2 HORIZONTAL SECTION

TYPICAL PACKAGE DIMENSIONS (NARROW STILE)			
PACKAGE WIDTH	NOMINAL CLEAR DOOR OPENING	DOOR PANEL NOMINAL WIDTH	EMERGENCY BREAKOUT NOM. WIDTH
120"	48.3"	30.3"	105.5"
144"	60.3"	36.3"	129.5"
168"	72.3"	42.3"	153.5"



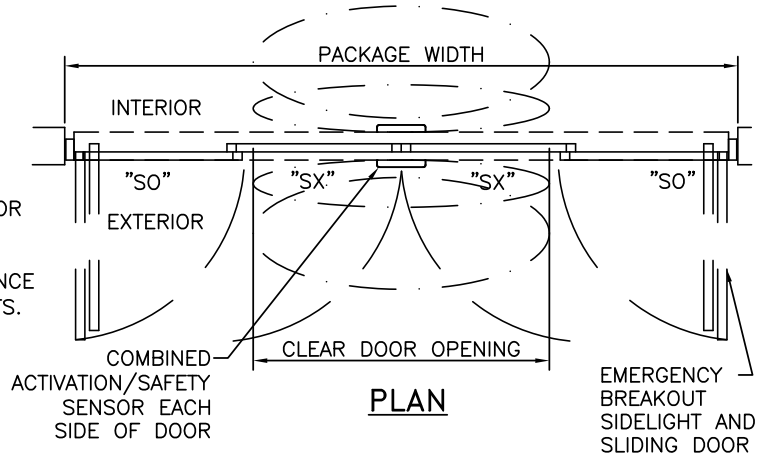
1 VERTICAL SECTION



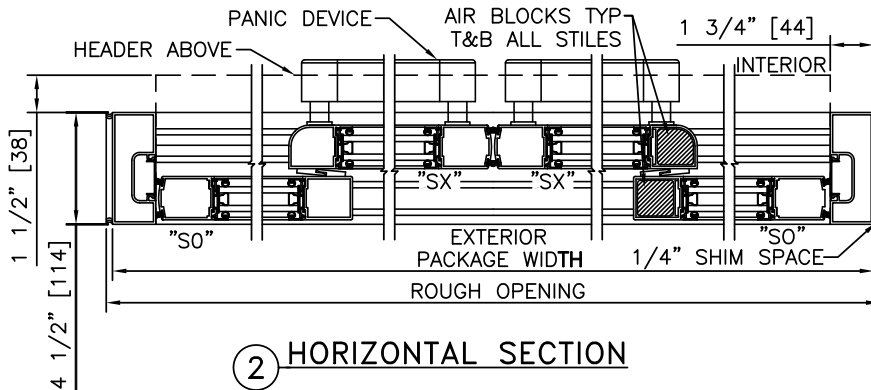
ELEVATION

NOTES

1. ELECTRICAL REQUIREMENTS: BY ELECTRICAL CONTRACTOR
 - 1.1. 120 VAC, 5 AMP MIN TO POWER OPERATOR
 - 1.2. CONTROL CIRCUIT FROM SECURE ACTIVATION TO OPERATOR
2. ROUGH OPENING SHALL PROVIDE 1/4"[6] SHIM SPACE ON SIDES AND TOP OF PACKAGE.
3. LIMITS OF ACTIVATION AND SAFETY ZONES ARE FOR REFERENCE ONLY; SEE ANSI/BHMA A156.10 FOR DETAILED REQUIREMENTS.
4. AIR INFILTRATION RATING: LESS THAN 1.0 CFM/FT² @ 1.57 PSF; PER ASTM E283 (NFRC 400), WITH GREENFIT SEALING SYSTEM.
5. SEE SPECIFICATIONS FOR ADDITIONAL INFORMATION.

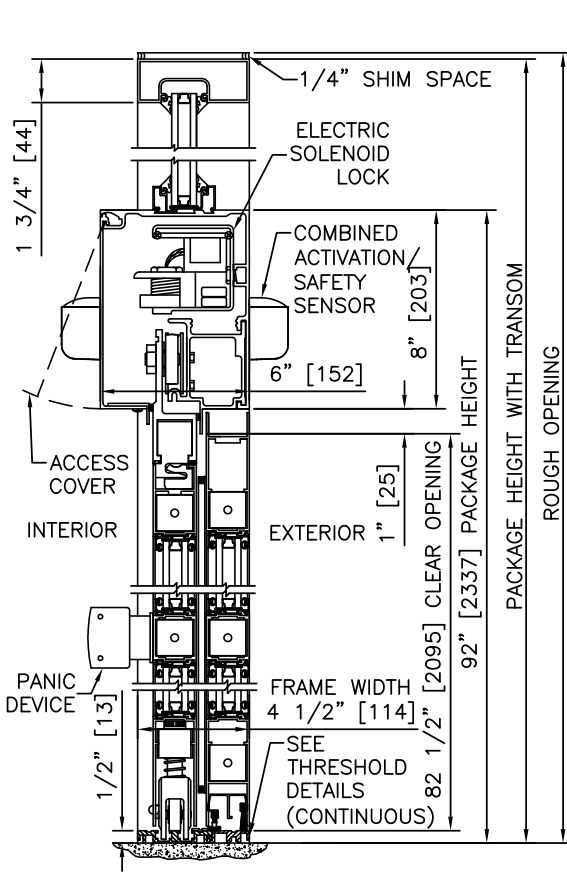


PLAN

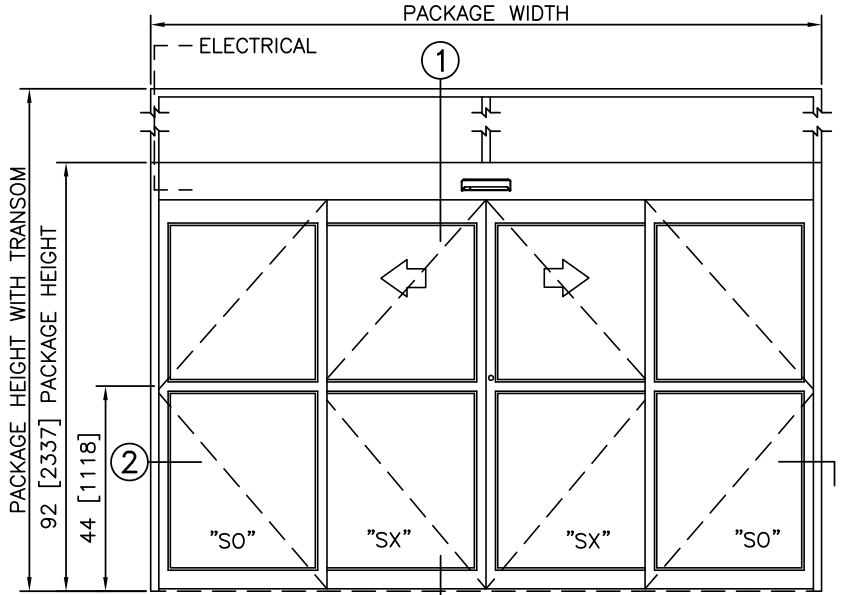


2 HORIZONTAL SECTION

TYPICAL PACKAGE DIMENSIONS (NARROW STILE)			
PACKAGE WIDTH	NOMINAL CLEAR DOOR OPENING	DOOR PANEL NOMINAL WIDTH	EMERGENCY BREAKOUT NOM. WIDTH
120"	48.3"	30.3"	105.5"
144"	60.3"	36.3"	129.5"
168"	72.3"	42.3"	153.5"

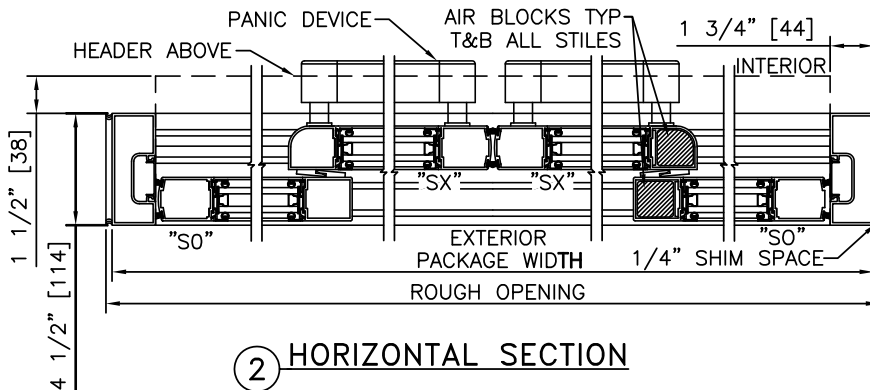
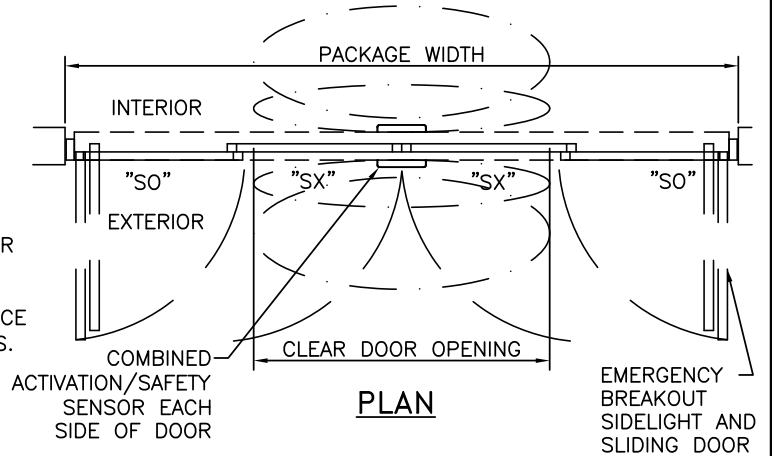


1 VERTICAL SECTION



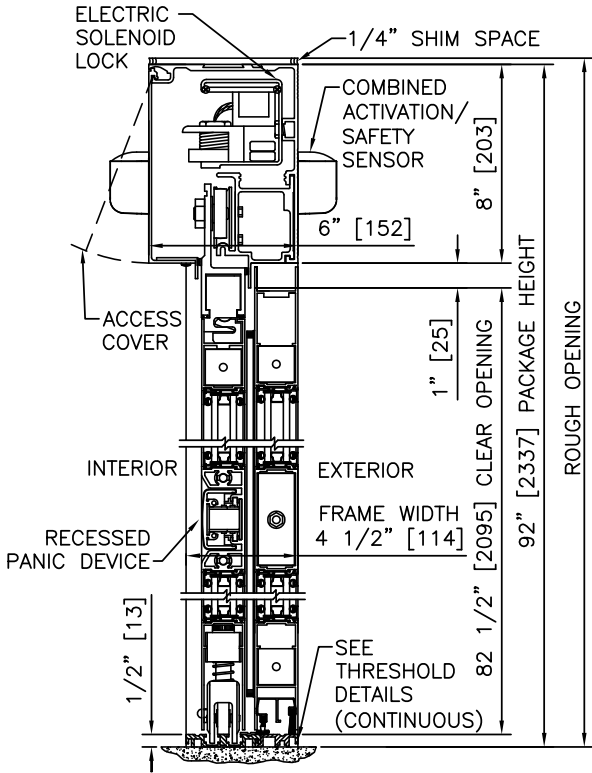
NOTES

- ELECTRICAL REQUIREMENTS: BY ELECTRICAL CONTRACTOR
 - 120 VAC, 5 AMP MIN TO POWER OPERATOR
 - CONTROL CIRCUIT FROM SECURE ACTIVATION TO OPERATOR
- ROUGH OPENING SHALL PROVIDE 1/4"[6] SHIM SPACE ON SIDES AND TOP OF PACKAGE.
- LIMITS OF ACTIVATION AND SAFETY ZONES ARE FOR REFERENCE ONLY; SEE ANSI/BHMA A156.10 FOR DETAILED REQUIREMENTS.
- AIR INFILTRATION RATING: LESS THAN 1.0 CFM/FT² @ 1.57 PSF; PER ASTM E283 (NFRC 400), WITH GREENFIT SEALING SYSTEM.
- SEE SPECIFICATIONS FOR ADDITIONAL INFORMATION.

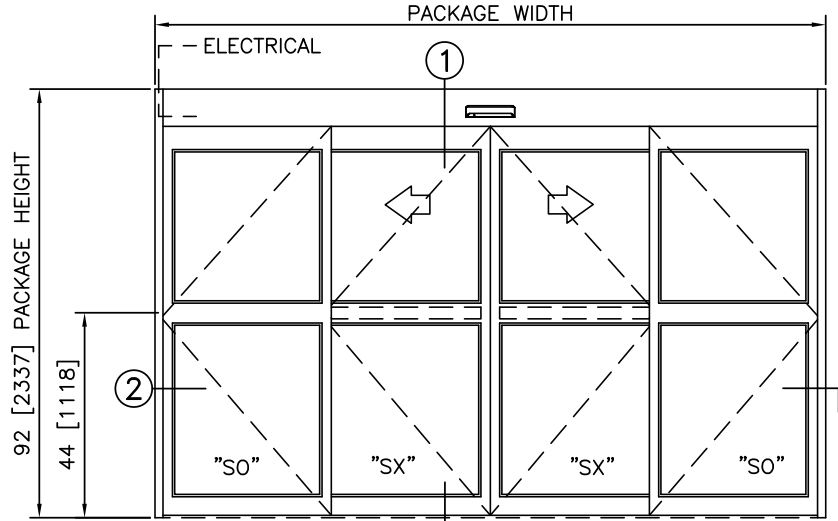


2 HORIZONTAL SECTION

TYPICAL PACKAGE DIMENSIONS (NARROW STILE)			
PACKAGE WIDTH	NOMINAL CLEAR DOOR OPENING	DOOR PANEL NOMINAL WIDTH	EMERGENCY BREAKOUT NOM. WIDTH
120"	48.3"	30.3"	105.5"
144"	60.3"	36.3"	129.5"
168"	72.3"	42.3"	153.5"



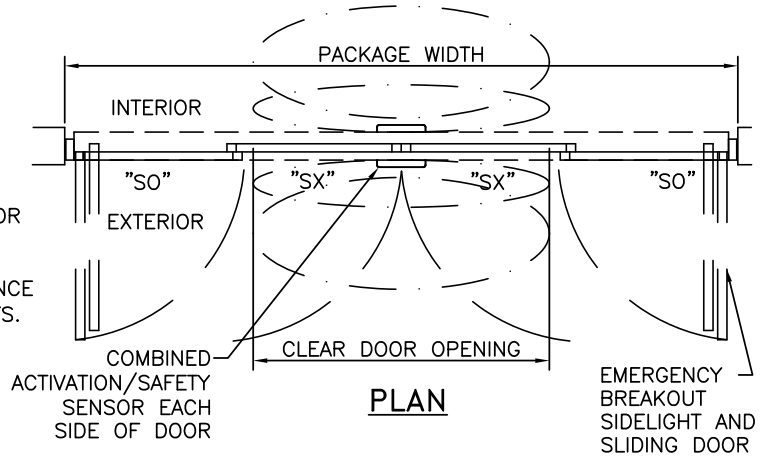
1 VERTICAL SECTION



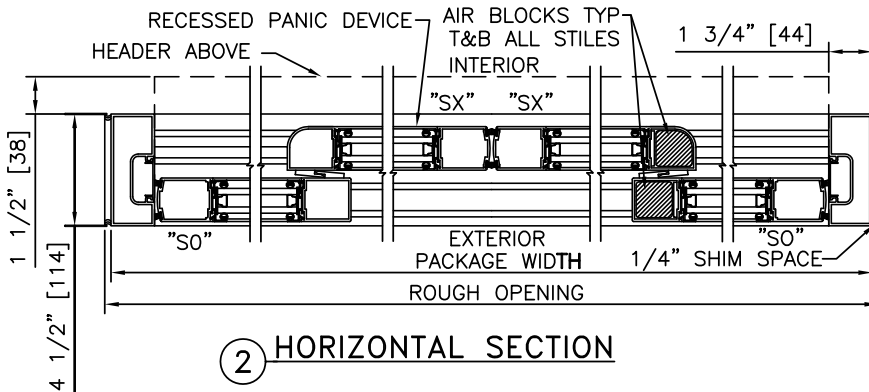
ELEVATION

NOTES

1. ELECTRICAL REQUIREMENTS: BY ELECTRICAL CONTRACTOR
 - 1.1. 120 VAC, 5 AMP MIN TO POWER OPERATOR
 - 1.2. CONTROL CIRCUIT FROM SECURE ACTIVATION TO OPERATOR
2. ROUGH OPENING SHALL PROVIDE 1/4"[6] SHIM SPACE ON SIDES AND TOP OF PACKAGE.
3. LIMITS OF ACTIVATION AND SAFETY ZONES ARE FOR REFERENCE ONLY; SEE ANSI/BHMA A156.10 FOR DETAILED REQUIREMENTS.
4. AIR INFILTRATION RATING: LESS THAN 1.0 CFM/FT² @ 1.57 PSF; PER ASTM E283 (NFRC 400), WITH GREENFIT SEALING SYSTEM.
5. SEE SPECIFICATIONS FOR ADDITIONAL INFORMATION.

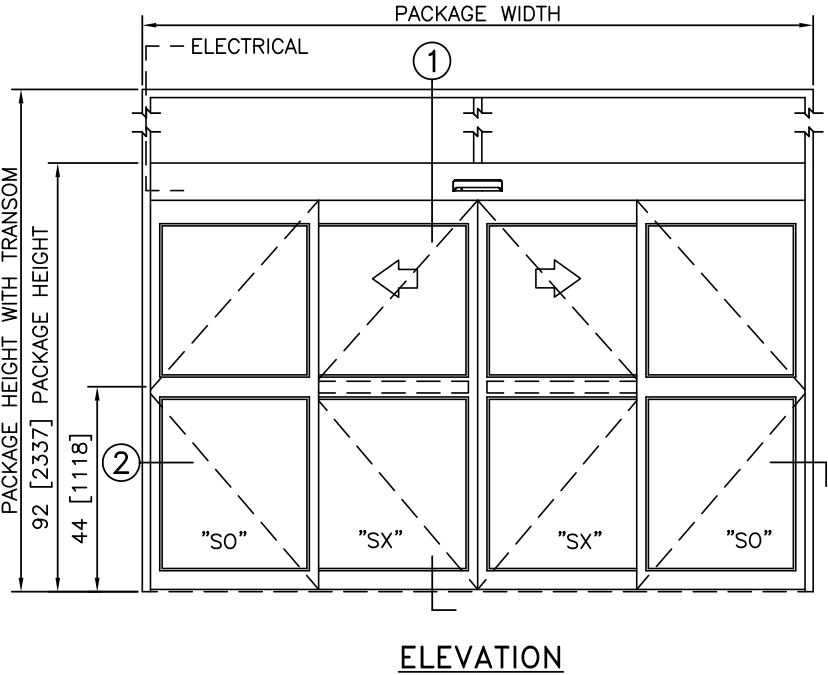
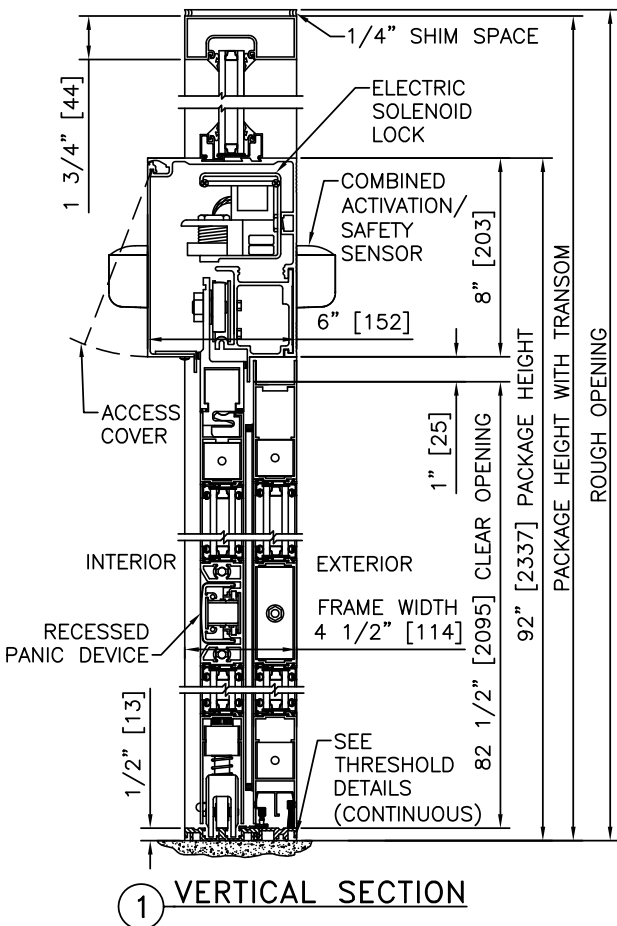


PLAN



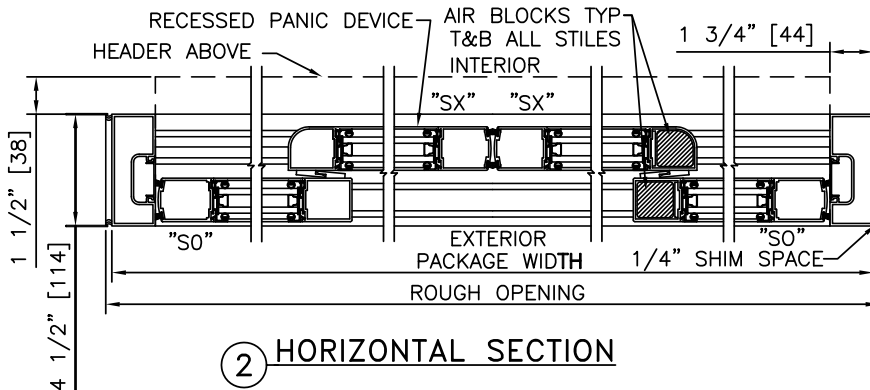
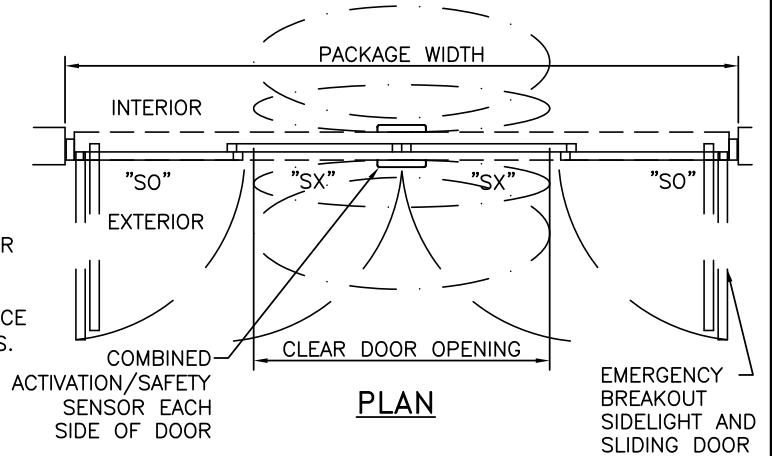
2 HORIZONTAL SECTION

TYPICAL PACKAGE DIMENSIONS (NARROW STILE)			
PACKAGE WIDTH	NOMINAL CLEAR DOOR OPENING	DOOR PANEL NOMINAL WIDTH	EMERGENCY BREAKOUT NOM. WIDTH
120"	48.3"	30.3"	105.5"
144"	60.3"	36.3"	129.5"
168"	72.3"	42.3"	153.5"



NOTES

- ELECTRICAL REQUIREMENTS: BY ELECTRICAL CONTRACTOR
 - 120 VAC, 5 AMP MIN TO POWER OPERATOR
 - CONTROL CIRCUIT FROM SECURE ACTIVATION TO OPERATOR
- ROUGH OPENING SHALL PROVIDE 1/4"[6] SHIM SPACE ON SIDES AND TOP OF PACKAGE.
- LIMITS OF ACTIVATION AND SAFETY ZONES ARE FOR REFERENCE ONLY; SEE ANSI/BHMA A156.10 FOR DETAILED REQUIREMENTS.
- AIR INFILTRATION RATING: LESS THAN 1.0 CFM/FT² @ 1.57 PSF; PER ASTM E283 (NFRC 400), WITH GREENFIT SEALING SYSTEM.
- SEE SPECIFICATIONS FOR ADDITIONAL INFORMATION.



TYPICAL PACKAGE DIMENSIONS (NARROW STILE)			
PACKAGE WIDTH	NOMINAL CLEAR DOOR OPENING	DOOR PANEL NOMINAL WIDTH	EMERGENCY BREAKOUT NOM. WIDTH
120"	48.3"	30.3"	105.5"
144"	60.3"	36.3"	129.5"
168"	72.3"	42.3"	153.5"