



SLIDING AUTOMATIC ENTRANCES: DURA-GUARD™ 3000, BI-PARTING

1.20 - BI-PARTING WITH OPTIONAL TRANSOM

- **1.20.01 - Bi-Parting**
- **1.20.02 - Bi-Parting with Transom**
- **1.20.03 - Bi-Parting with Access Control, Recessed**
- **1.20.04 - Bi-Parting with Transom & Access Control, Recessed**

STANLEY
Access Technologies

DURA-GUARD 3000 SERIES

BI-PART WITH OPTIONAL TRANSOM

PROJECT INFORMATION

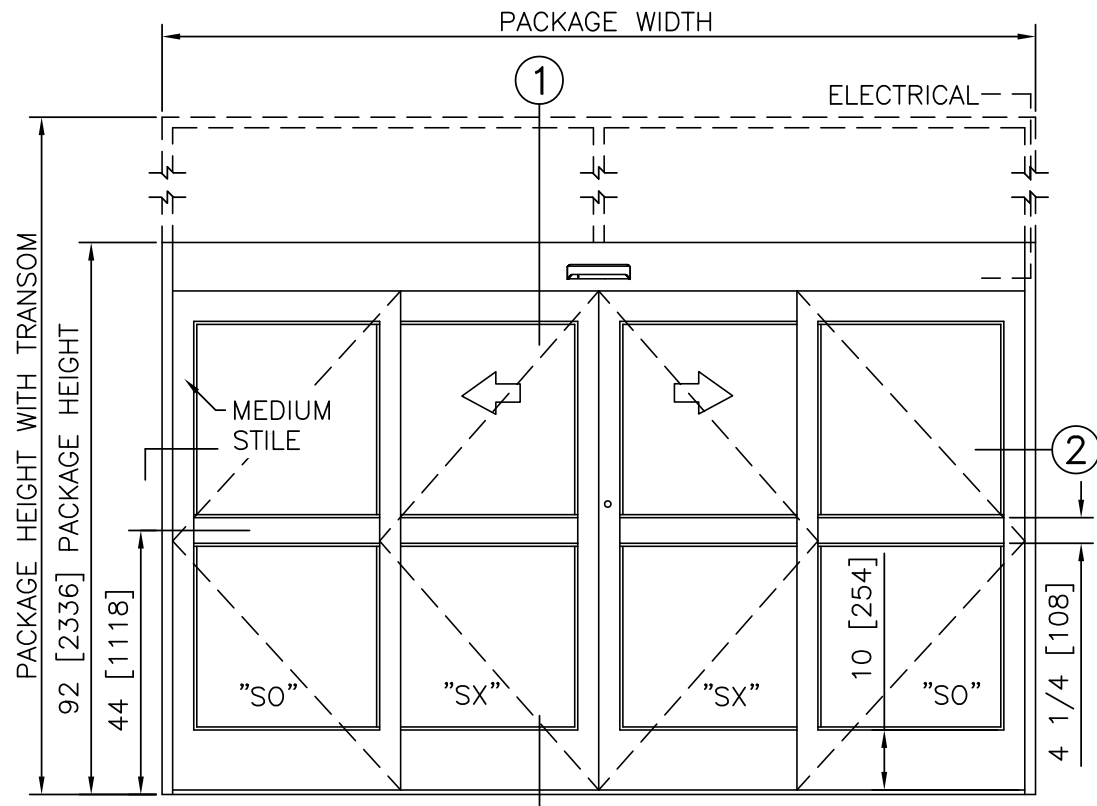
PROJECT NAME:

LOCATION:

DOOR NUMBER(S):

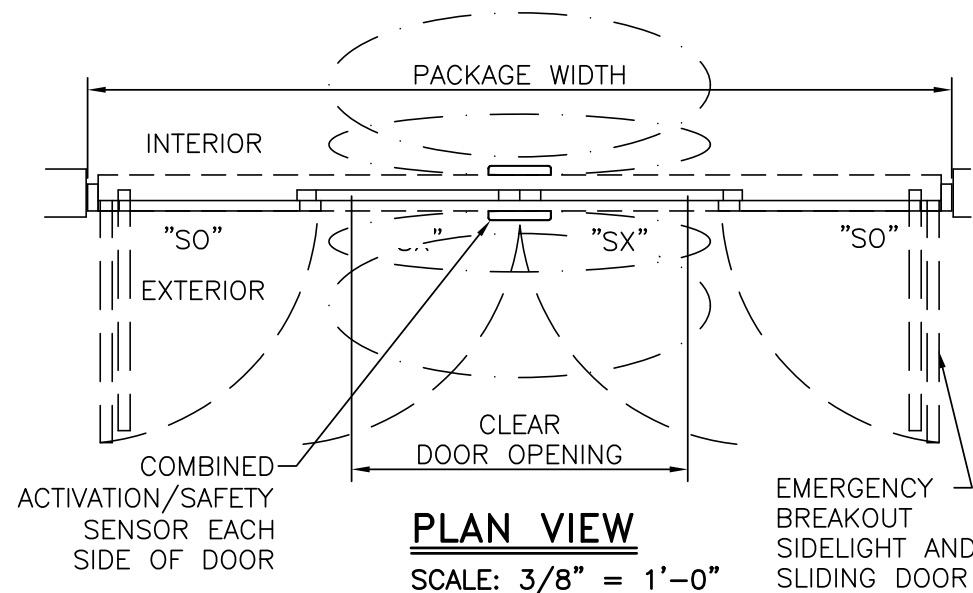
DATE:

SHEET: OF



ELEVATION VIEW

SCALE: 3/8" = 1'-0"



PLAN VIEW

SCALE: 3/8" = 1'-0"

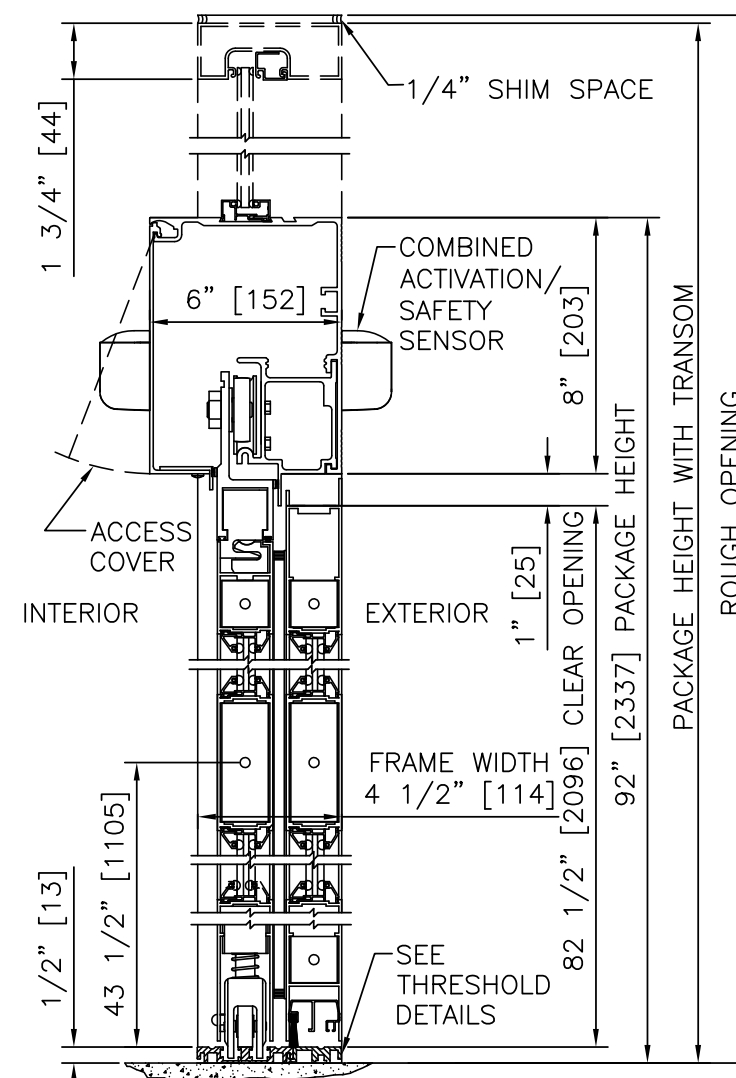
NOTES

- ELECTRICAL REQUIREMENTS: 120 VAC, 5 AMP MIN TO POWER OPERATOR BY ELECTRICAL CONTRACTOR.
- ROUGH OPENING SHALL PROVIDE 1/4"[6] SHIM SPACE ON SIDES AND TOP OF PACKAGE.
- LIMITS OF ACTIVATION AND SAFETY ZONES ARE FOR REFERENCE ONLY; SEE ANSI/BHMA A156.10 FOR DETAILED REQUIREMENTS.
- STANDARD LOCKING IS 2-POINT, 3-POINT AND ACCESS CONTROL SYSTEMS AVAILABLE. SEE SHEET 1.60.
- STANDARD GLAZING STOPS FOR SLIDING AND FIXED PANELS ARE 1/4"[6]; 5/8"[16] AND 1"[25] AVAILABLE.
- STANDARD JAMB TUBES SHOWN; 6"[152] AVAILABLE.
- SEE SPECIFICATIONS FOR ADDITIONAL INFORMATION.



② HORIZONTAL SECTION

SCALE: 2" = 1'-0"



① VERTICAL SECTION

SCALE: 2" = 1'-0"

PRODUCT OPTIONS

- TRANSOM**
- YES (WHERE SCHEDULED)
 - VERTICALS 1 2 3
- FINISH**
- ANODIZED CLEAR CL2
 - ANODIZED DK BRONZE
 - CUSTOM
- LOCKING**
- 2-POINT
 - LOCK POSITION INDICATOR
 - ACCESS CONTROL (PANIC)
 - 3-POINT
- STILES**
- MEDIUM
- BOTTOM RAILS**
- STANDARD 10"
- THRESHOLDS**
- SQ/BVL (EXT)
 - DBL BVL
 - ANGLE/FLAT
 - SQ/BVL (INT)
 - RECESSED
- ACTIVATION/SAFETY**
- 2 COMBINED ACTIVATION/SAFETY SENSORS
- OTHER OPTIONS**
- ROTARY CTRL SWITCH
 - UNINTERRUPTIBLE POWER SUPPLY
 - FLY OPEN BOX
 - WIND DAMPERS
 - PANEL CLOSERS
 - ALARM CONTACTS
 - DUAL DOOR POSITION SWITCH
 - DUAL MOTOR DRIVE
 - CRASH BARS
 - KICK PLATES/DIAMOND PLATE
 - KEYED

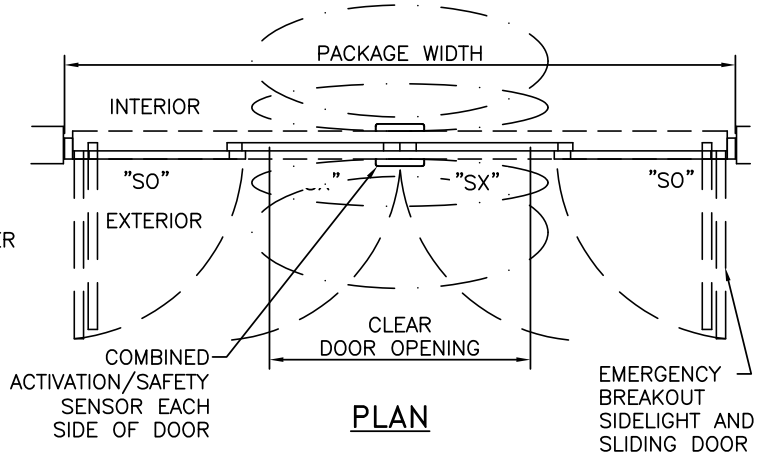
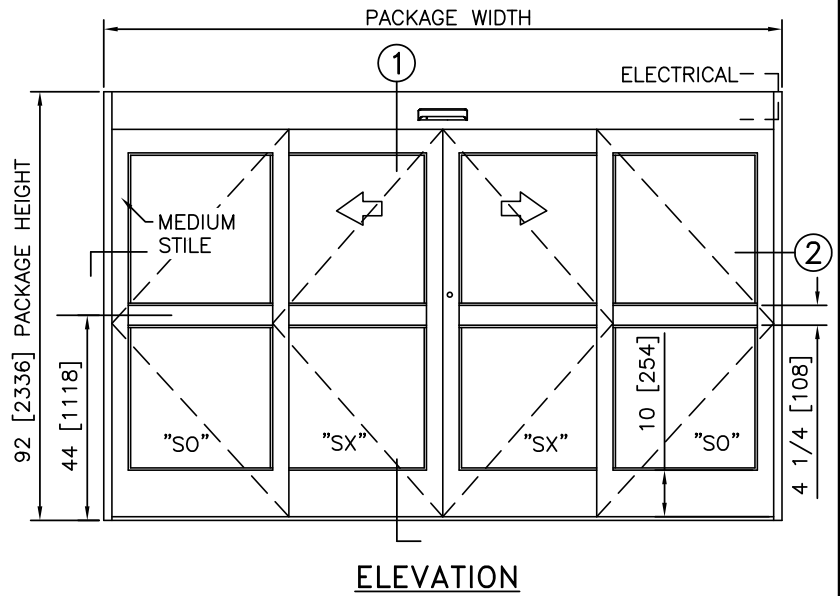
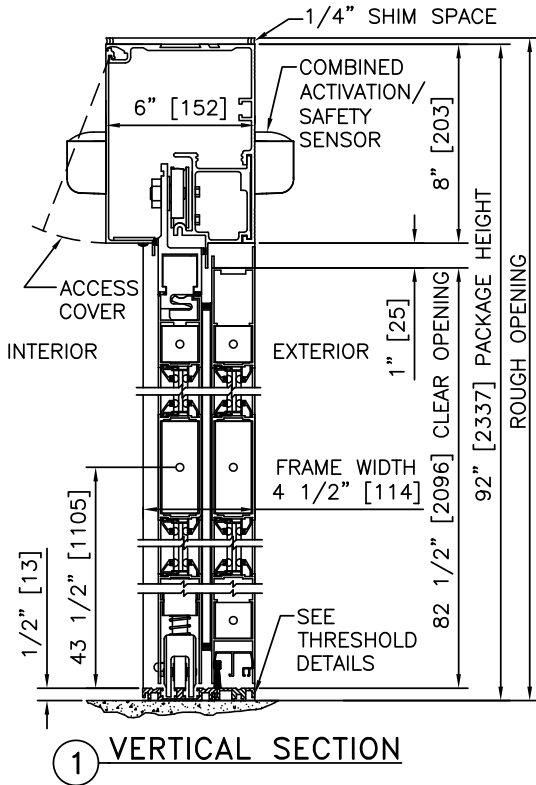
BI-PART FORMULAS - MEDIUM STILE
 PACKAGE WIDTH = 2 X CLEAR DOOR OPENING + 32.1"
 CLEAR DOOR OPENING = 1/2 PACKAGE WIDTH - 16.0"
 EMERGENCY BREAKOUT WIDTH = PACKAGE WIDTH - 17.5"
 DOOR PANEL WIDTH = PACKAGE WIDTH - 17.5"

| TYPICAL PACKAGE DIMENSIONS (MEDIUM STILE) | | | |
|---|----------------------------|--------------------------|-------------------------------|
| PACKAGE WIDTH | NOMINAL CLEAR DOOR OPENING | DOOR PANEL NOMINAL WIDTH | EMERGENCY BREAKOUT NOM. WIDTH |
| 120" | 44.0" | 31.1" | 102.5" |
| 144" | 56.0" | 37.1" | 126.5" |
| 168" | 68.0" | 43.1" | 150.5" |

BI-PART WITH OPTIONAL TRANSOM

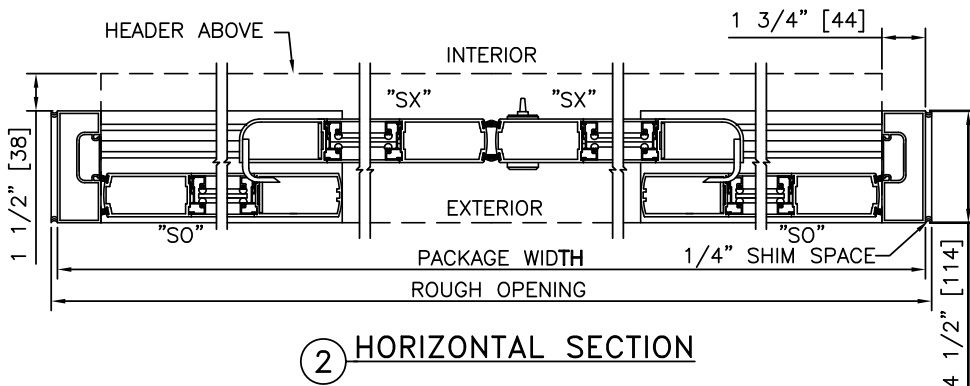
DURA-GUARD 3000 SERIES

STANLEY
Access Technologies

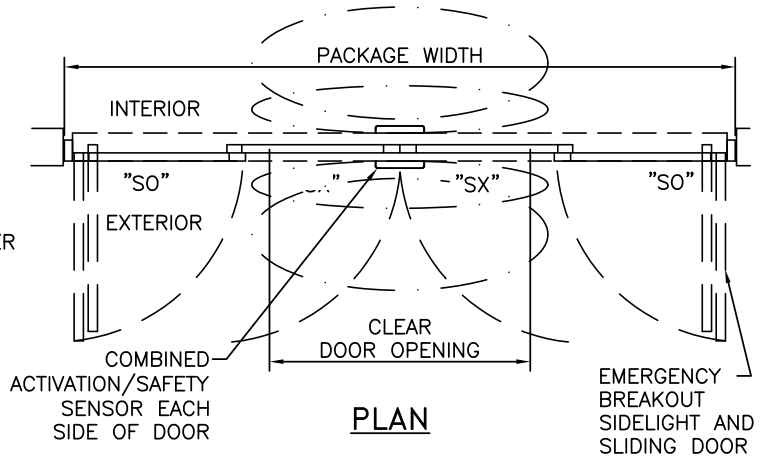
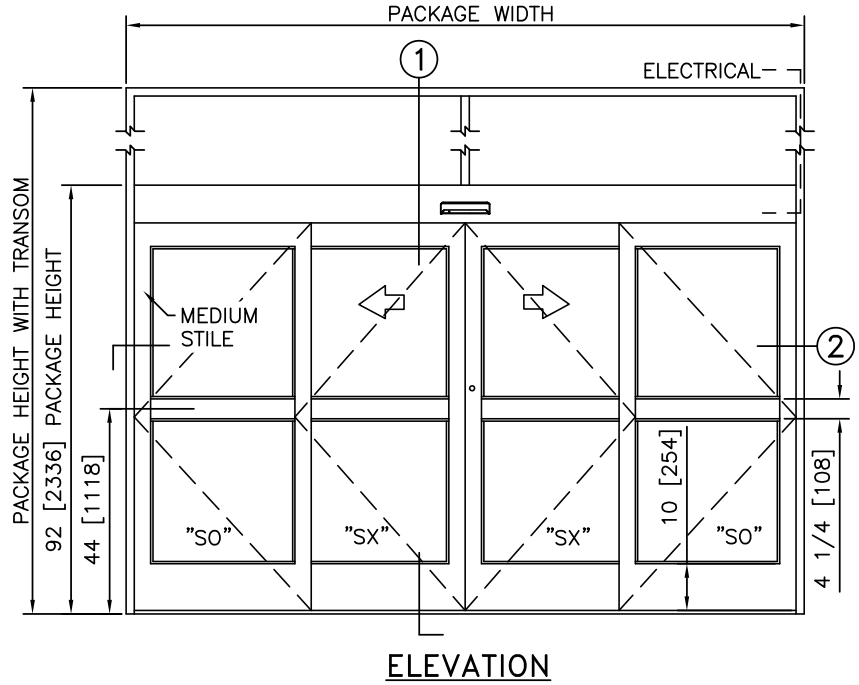
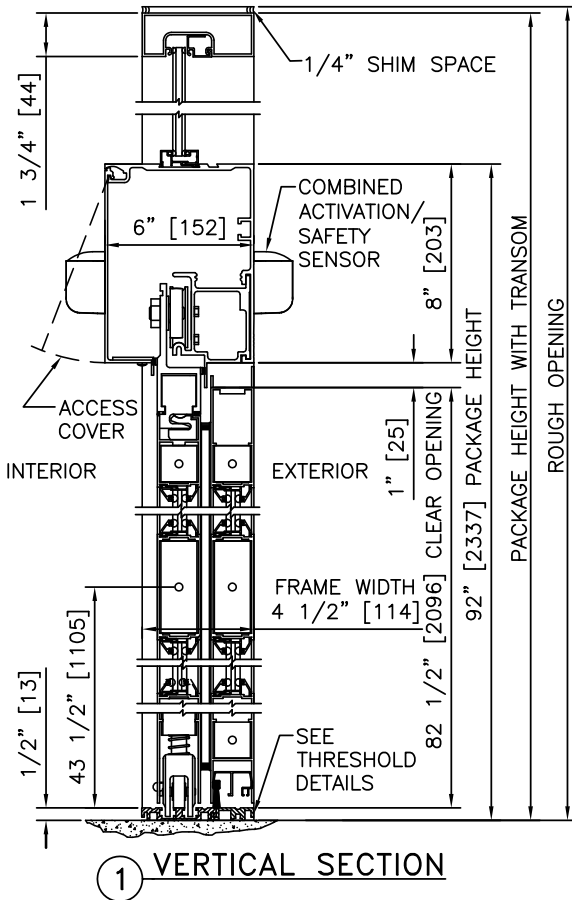


NOTES

1. ELECTRICAL REQUIREMENTS: 120 VAC, 5 AMP MIN TO POWER OPERATOR BY ELECTRICAL CONTRACTOR.
2. ROUGH OPENING SHALL PROVIDE 1/4"[6] SHIM SPACE ON SIDES AND TOP OF PACKAGE.
3. LIMITS OF ACTIVATION AND SAFETY ZONES ARE FOR REFERENCE ONLY; SEE ANSI/BHMA A156.10 FOR DETAILED REQUIREMENTS.
4. SEE SPECIFICATIONS FOR ADDITIONAL INFORMATION.

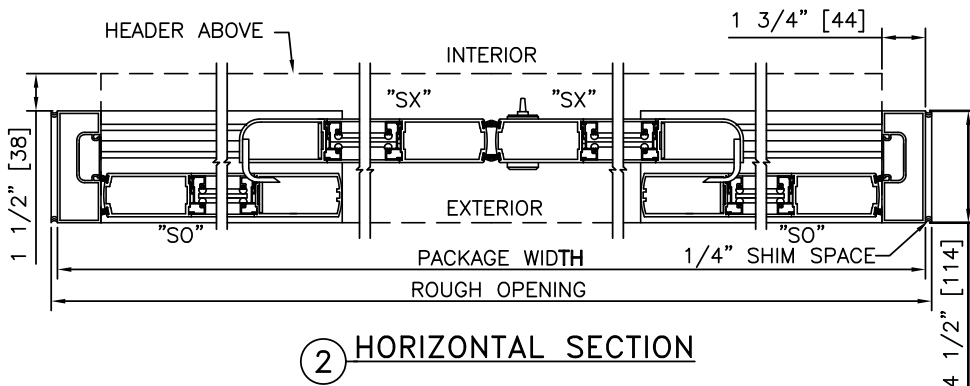


| TYPICAL PACKAGE DIMENSIONS (MEDIUM STILE) | | | |
|---|----------------------------|--------------------------|-------------------------------|
| PACKAGE WIDTH | NOMINAL CLEAR DOOR OPENING | DOOR PANEL NOMINAL WIDTH | EMERGENCY BREAKOUT NOM. WIDTH |
| 120" | 44.0" | 31.1" | 102.5" |
| 144" | 56.0" | 37.1" | 126.5" |
| 168" | 68.0" | 43.1" | 150.5" |

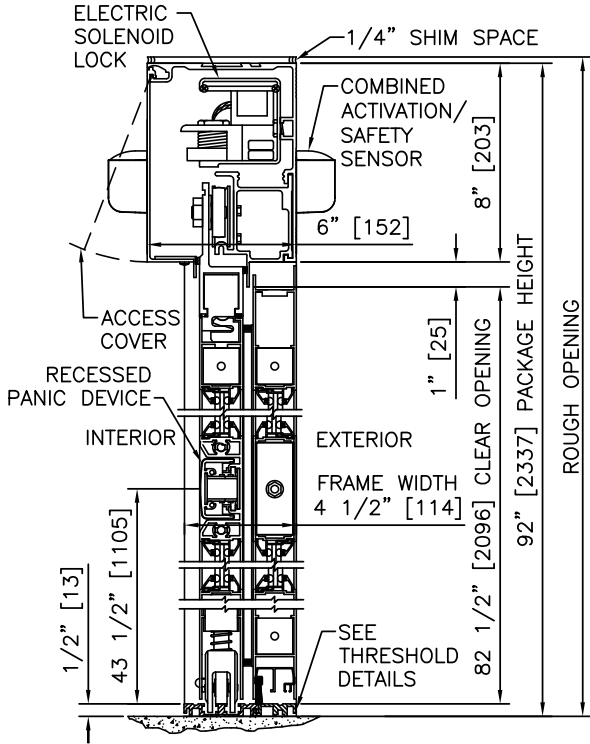


NOTES

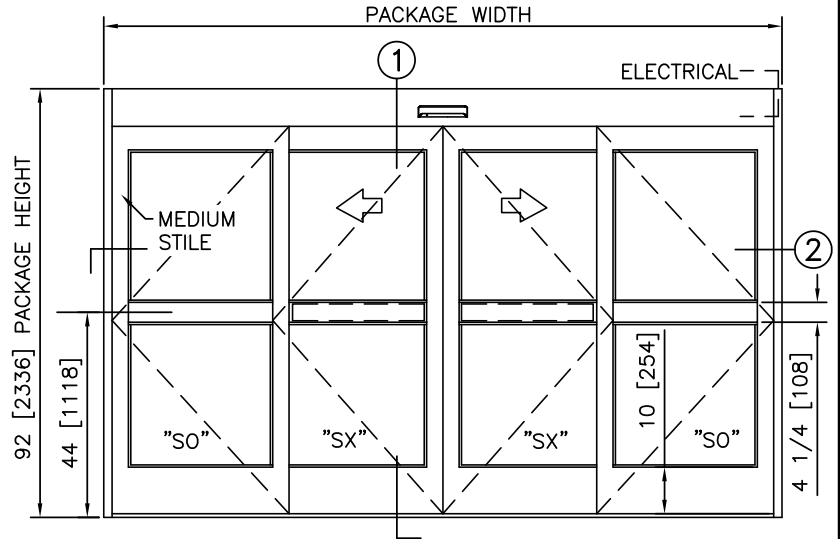
1. ELECTRICAL REQUIREMENTS: 120 VAC, 5 AMP MIN TO POWER OPERATOR BY ELECTRICAL CONTRACTOR.
2. ROUGH OPENING SHALL PROVIDE 1/4"[6] SHIM SPACE ON SIDES AND TOP OF PACKAGE.
3. LIMITS OF ACTIVATION AND SAFETY ZONES ARE FOR REFERENCE ONLY; SEE ANSI/BHMA A156.10 FOR DETAILED REQUIREMENTS.
4. SEE SPECIFICATIONS FOR ADDITIONAL INFORMATION.



| TYPICAL PACKAGE DIMENSIONS (MEDIUM STILE) | | | |
|---|----------------------------|--------------------------|-------------------------------|
| PACKAGE WIDTH | NOMINAL CLEAR DOOR OPENING | DOOR PANEL NOMINAL WIDTH | EMERGENCY BREAKOUT NOM. WIDTH |
| 120" | 44.0" | 31.1" | 102.5" |
| 144" | 56.0" | 37.1" | 126.5" |
| 168" | 68.0" | 43.1" | 150.5" |



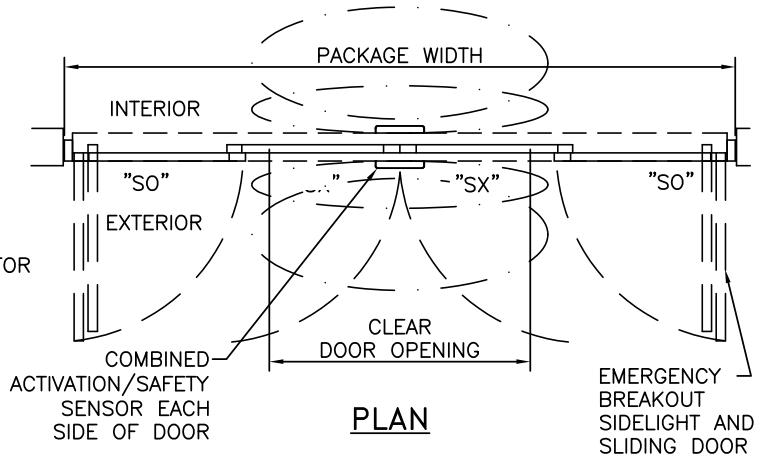
1 VERTICAL SECTION



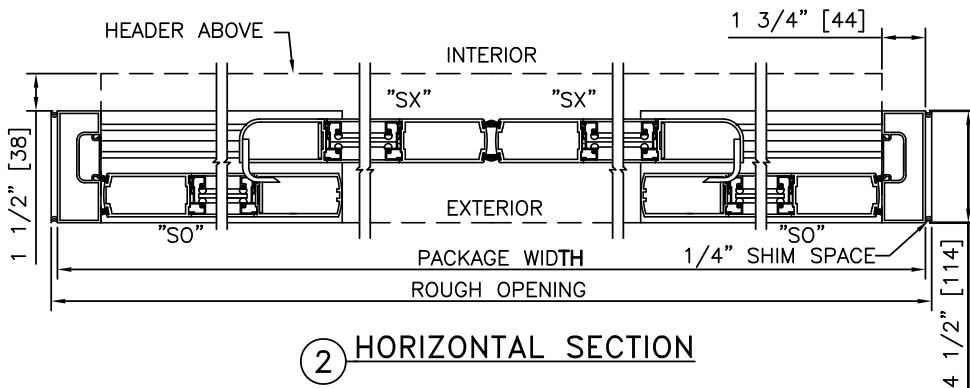
ELEVATION

NOTES

1. ELECTRICAL REQUIREMENTS: BY ELECTRICAL CONTRACTOR
 - 1.1. 120 VAC, 5 AMP MIN TO POWER OPERATOR
 - 1.2. CONTROL CIRCUIT FROM SECURE ACTIVATION TO OPERATOR
2. ROUGH OPENING SHALL PROVIDE 1/4" [6] SHIM SPACE ON SIDES AND TOP OF PACKAGE.
3. LIMITS OF ACTIVATION AND SAFETY ZONES ARE FOR REFERENCE ONLY; SEE ANSI/BHMA A156.10 FOR DETAILED REQUIREMENTS.
4. SEE SPECIFICATIONS FOR ADDITIONAL INFORMATION.



PLAN



2 HORIZONTAL SECTION

| TYPICAL PACKAGE DIMENSIONS (MEDIUM STILE) | | | |
|---|----------------------------|--------------------------|-------------------------------|
| PACKAGE WIDTH | NOMINAL CLEAR DOOR OPENING | DOOR PANEL NOMINAL WIDTH | EMERGENCY BREAKOUT NOM. WIDTH |
| 120" | 44.0" | 31.1" | 102.5" |
| 144" | 56.0" | 37.1" | 126.5" |
| 168" | 68.0" | 43.1" | 150.5" |

**DURA-GUARD
3000
SERIES**

BI-PARTING WITH TRANSOM & ACCESS CONTROL, RECESSED

PROJECT INFORMATION

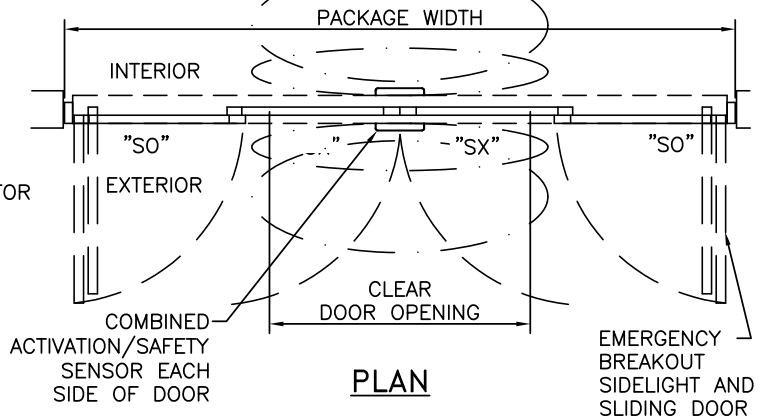
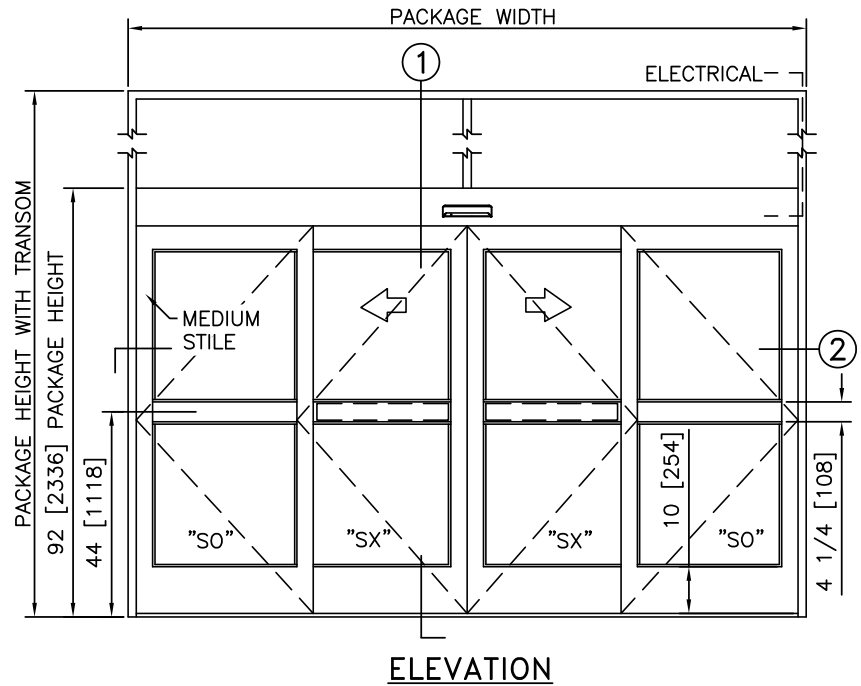
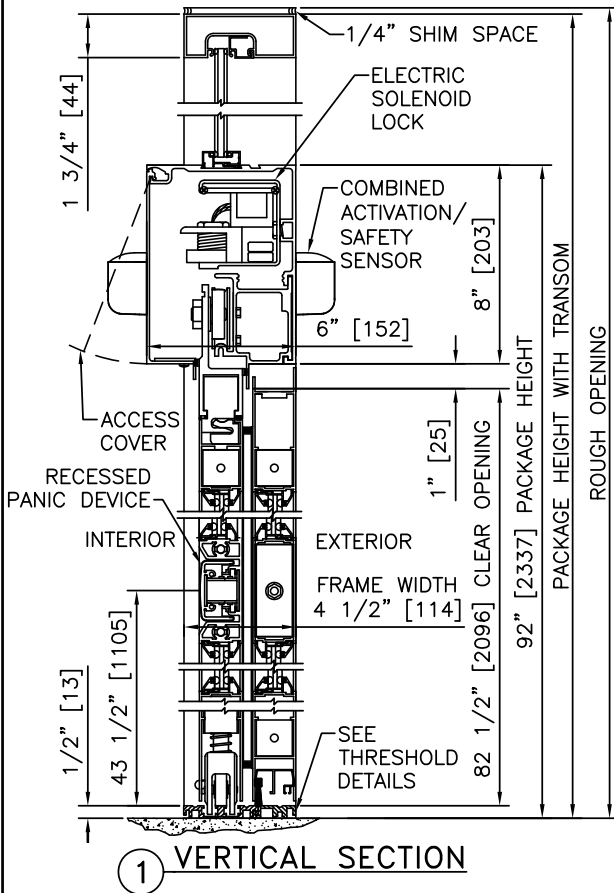
PROJECT NAME:

LOCATION:

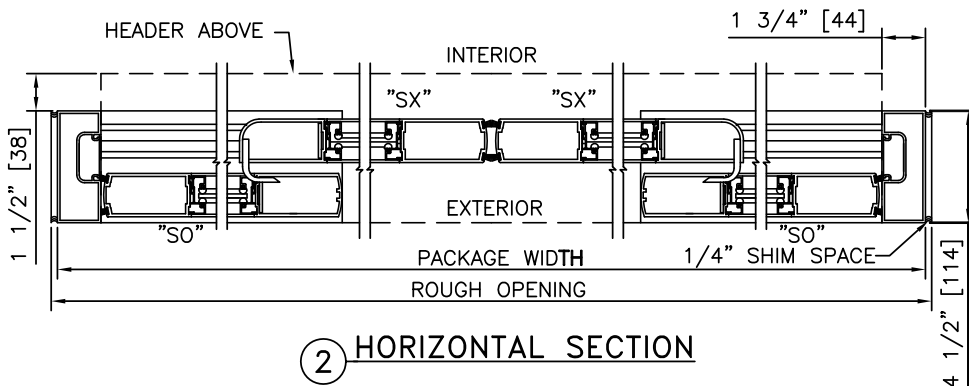
DOOR NUMBER(S):

DATE:

SHEET: OF



- NOTES**
- ELECTRICAL REQUIREMENTS: BY ELECTRICAL CONTRACTOR
 - 120 VAC, 5 AMP MIN TO POWER OPERATOR
 - CONTROL CIRCUIT FROM SECURE ACTIVATION TO OPERATOR
 - ROUGH OPENING SHALL PROVIDE 1/4"[6] SHIM SPACE ON SIDES AND TOP OF PACKAGE.
 - LIMITS OF ACTIVATION AND SAFETY ZONES ARE FOR REFERENCE ONLY; SEE ANSI/BHMA A156.10 FOR DETAILED REQUIREMENTS.
 - SEE SPECIFICATIONS FOR ADDITIONAL INFORMATION.



| TYPICAL PACKAGE DIMENSIONS (MEDIUM STILE) | | | |
|---|----------------------------|--------------------------|-------------------------------|
| PACKAGE WIDTH | NOMINAL CLEAR DOOR OPENING | DOOR PANEL NOMINAL WIDTH | EMERGENCY BREAKOUT NOM. WIDTH |
| 120" | 44.0" | 31.1" | 102.5" |
| 144" | 56.0" | 37.1" | 126.5" |
| 168" | 68.0" | 43.1" | 150.5" |