



## **SLIDING AUTOMATIC ENTRANCES: DURA-STORM™ 2000, SINGLE SLIDE**

### **2.02 - SINGLE SLIDE**

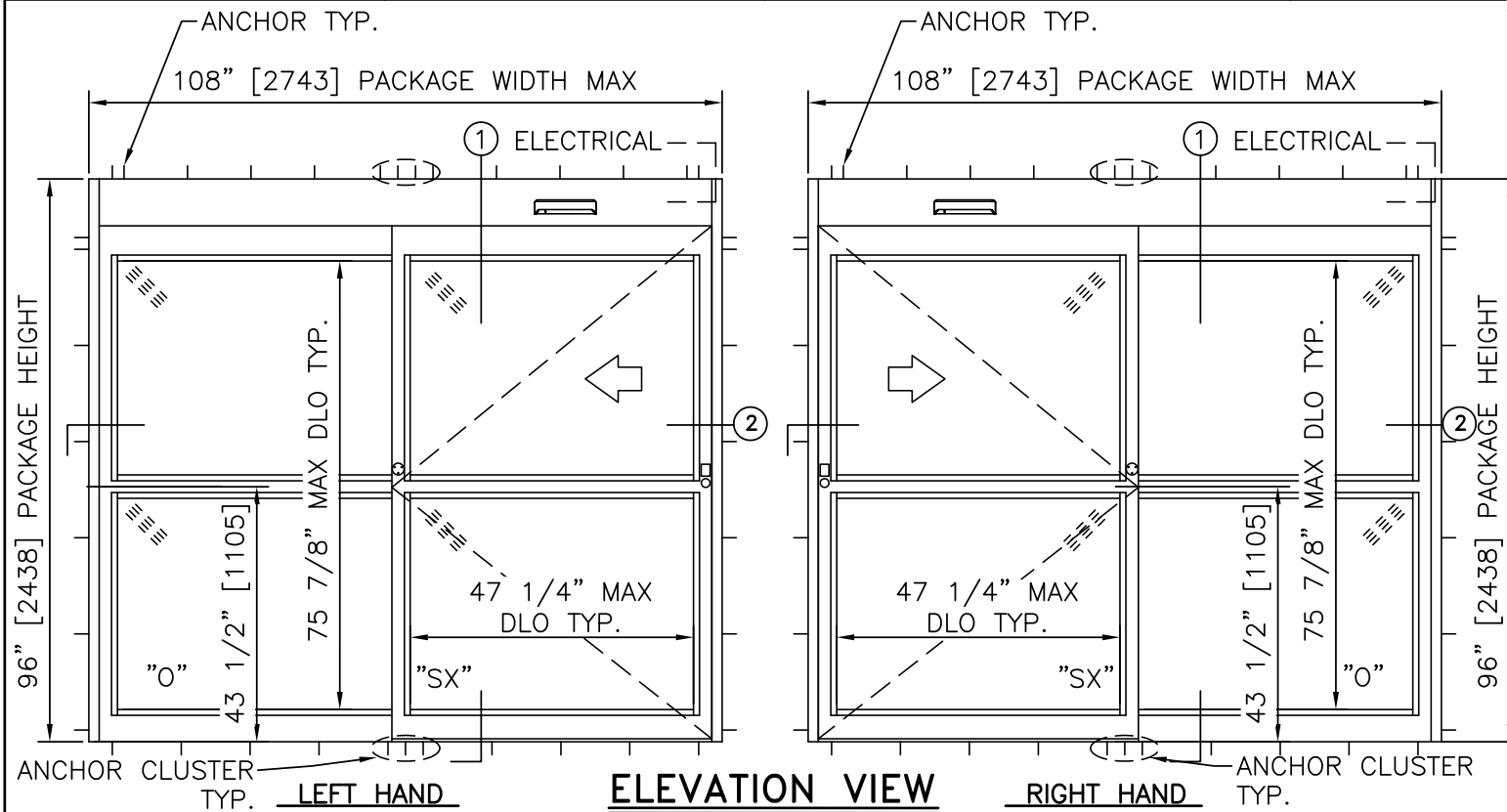
- **2.02.01 - Single Slide Right Hand**
- **2.02.02 - Single Slide Left Hand**
- **2.02.03 - Single Slide Right Hand with Automatic Locking**
- **2.02.04 - Single Slide Left Hand with Automatic Locking**

**STANLEY**  
Access Technologies

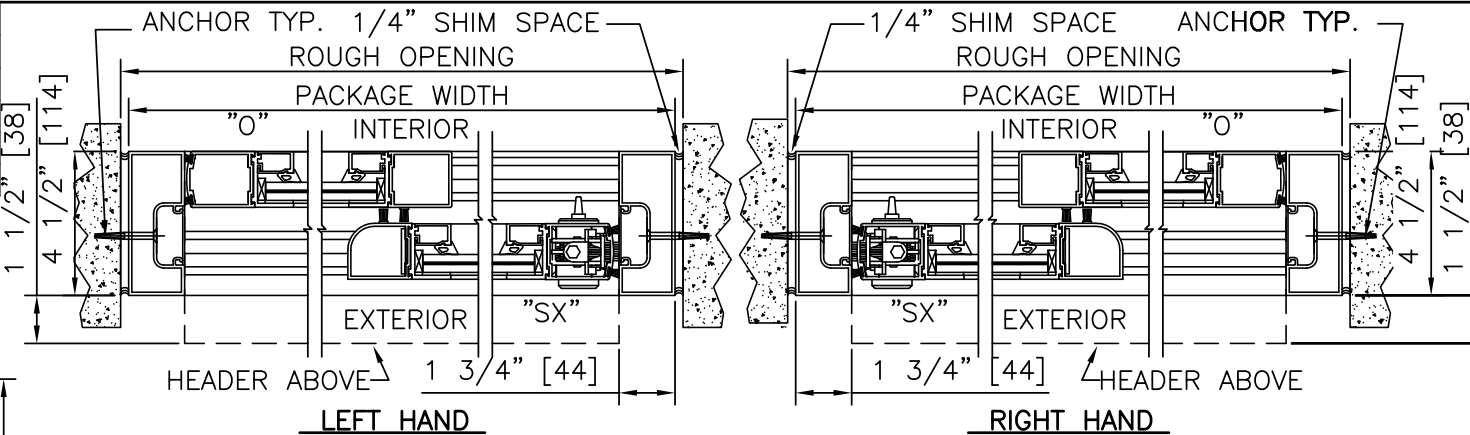
**DURA-STORM**  
**2000**  
**IMPACT**  
**SERIES**

**SINGLE SLIDE**  
PROJECT INFORMATION

PROJECT NAME: \_\_\_\_\_  
 LOCATION: \_\_\_\_\_  
 DOOR NUMBER(S): \_\_\_\_\_  
 DATE: \_\_\_\_\_ SHEET: OF \_\_\_\_\_



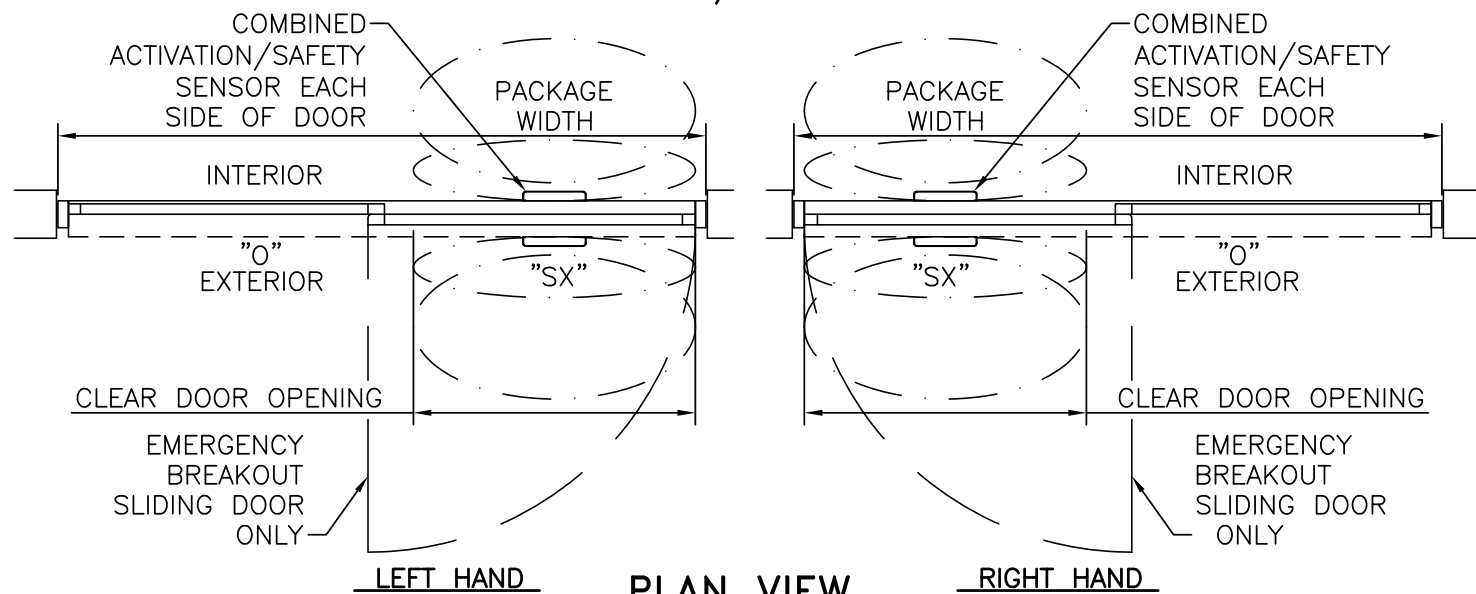
**ELEVATION VIEW**  
SCALE: 3/8" = 1'-0"



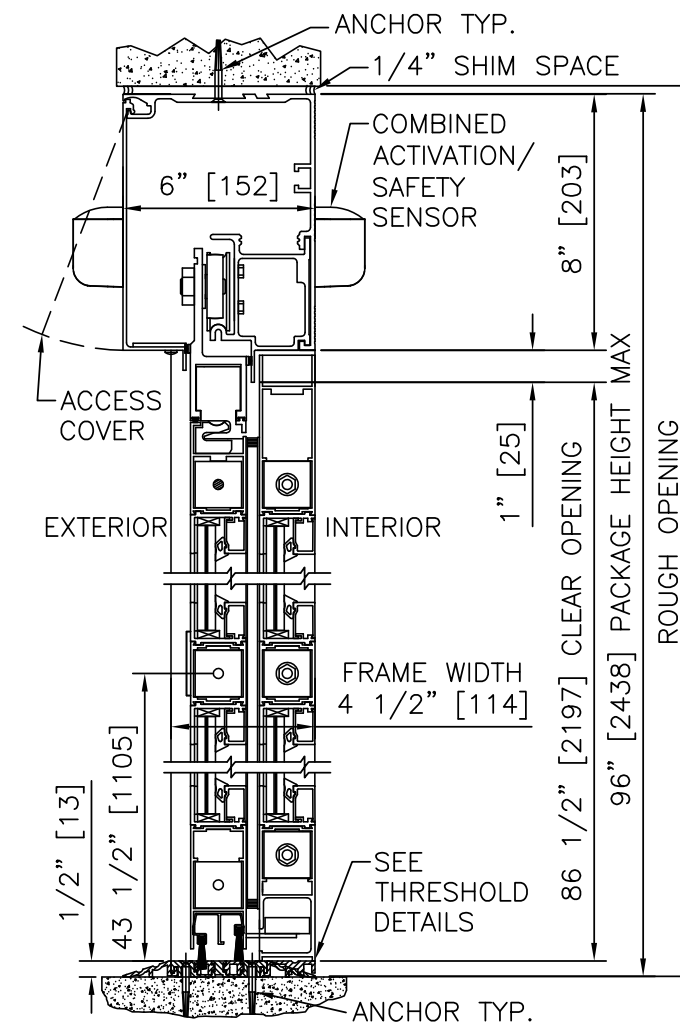
**HORIZONTAL SECTION**  
SCALE: 2" = 1'-0"

PRODUCT OPTIONS

- FINISH
- ANODIZED CLEAR CL2
  - ANODIZED DK BRONZE
  - CUSTOM
- LOCKING
- 3-POINT
  - ELECTRIC SOLENOID LOCK
- STILES
- NARROW
  - MEDIUM
- MUNTINS
- 2"
  - 4 1/4"
  - NONE
- JAMBS
- 4 1/2"
  - 6"
- BOTTOM RAILS
- STANDARD 4"
  - OPTIONAL 6" 8" 10"
- THRESHOLDS
- SQ/BVL (EXT)
  - SQ/BVL (INT)
  - DBL BVL
  - RECESSED
- ACTIVATION/SAFETY
- 2 COMBINED ACTIVATION/SAFETY SENSORS
- OTHER OPTIONS
- ROTARY CTRL SWITCH
  - KEYED
  - UNINTERRUPTIBLE POWER SUPPLY
  - FLY OPEN BOX
  - WIND DAMPERS
  - ALARM CONTACTS



**PLAN VIEW**  
SCALE: 3/8" = 1'-0"



**VERTICAL SECTION**  
SCALE: 2" = 1'-0"  
LEFT HAND & RIGHT HAND

MAX. PACKAGE DIMENSIONS (NARROW STILE)			
PACKAGE WIDTH	NOMINAL CLEAR DOOR OPENING	DOOR PANEL NOMINAL WIDTH	EMERGENCY BREAKOUT NOM. WIDTH
108"	46.4"	53.8"	50.7"

DESIGN RATINGS	
MISILE IMPACT RATING	<input checked="" type="checkbox"/> LARGE AND SMALL MISILE IMPACT
DESIGN PRESSURE RATING (PSF[Pa])	
POSITIVE	75 PSF [3591 Pa]
NEGATIVE	75 PSF [3591 Pa]

**SINGLE SLIDE FORMULAS - NARROW STILE**  
 PACKAGE WIDTH = 2 X CLEAR DOOR OPENING + 15.2"  
 CLEAR DOOR OPENING = 1/2 PACKAGE WIDTH - 7.6"  
 EMERGENCY BREAKOUT WIDTH = CLEAR DOOR OPENING + 4.3"  
 DOOR PANEL WIDTH = 1/2 PACKAGE WIDTH - 0.2"

**SINGLE SLIDE FORMULAS - MEDIUM STILE**  
 PACKAGE WIDTH = 2 X CLEAR DOOR OPENING + 19.5"  
 CLEAR DOOR OPENING = 1/2 PACKAGE WIDTH - 9.8"  
 EMERGENCY BREAKOUT WIDTH = CLEAR DOOR OPENING + 5.7"  
 DOOR PANEL WIDTH = 1/2 PACKAGE WIDTH + 0.7"

**DURA-STORM**  
**2000**  
**IMPACT**  
**SERIES**

**STANLEY**  
Access Technologies

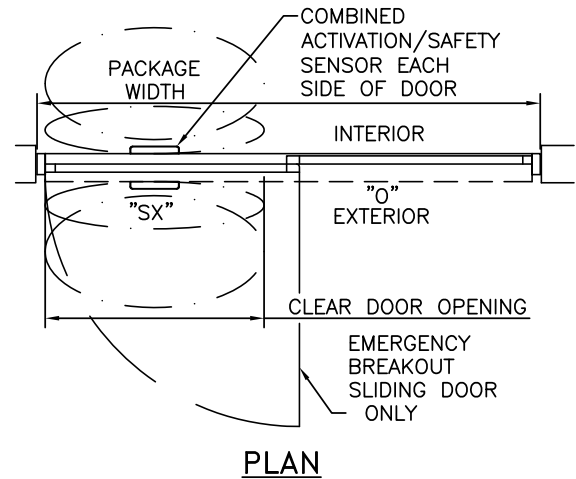
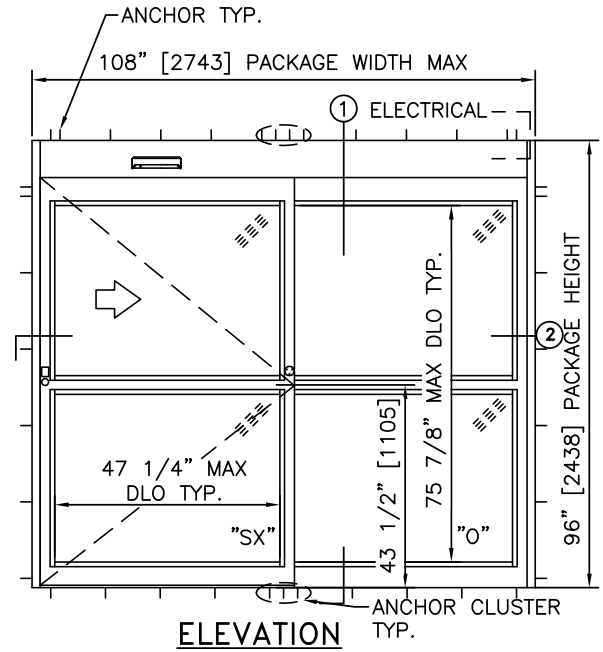
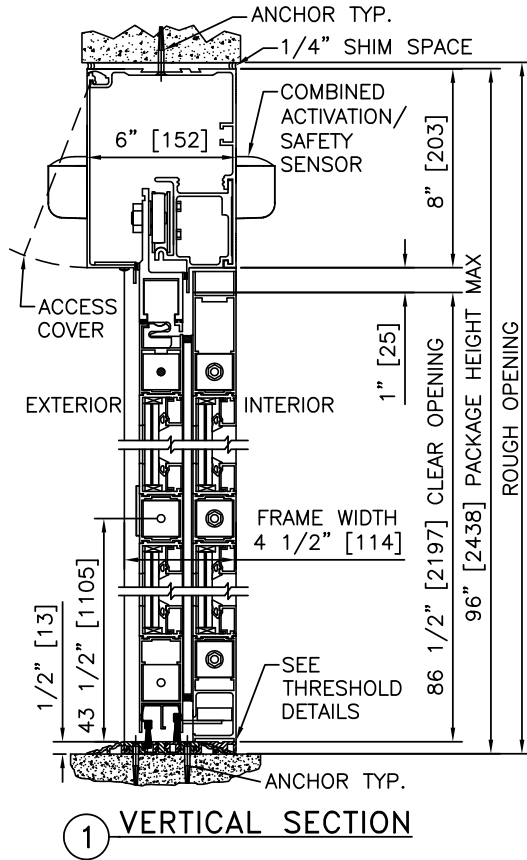
NOTES

- ELECTRICAL REQUIREMENTS: 120 VAC, 5 AMP MIN TO POWER OPERATOR BY ELECTRICAL CONTRACTOR.
- ROUGH OPENING SHALL PROVIDE 1/4"[6] SHIM SPACE ON SIDES AND TOP OF PACKAGE.
- ACTIVATION AND SAFETY ZONES ARE FOR REFERENCE ONLY; SEE ANSI/BHMA A156.10 FOR DETAILED REQUIREMENTS.
- 5-POINT LOCKING STANDARD. ELECTRIC SOLENOID LOCK MAY BE ADDED FOR ACCESS CONTROL.
- ENTRANCE TO RECEIVE APPROVED 9/16"[14] LAMINATED GLAZING.
- STANDARD STILES, BOTTOM RAILS AND MUNTINS SHOWN; MEDIUM STILES, BOTTOM RAILS TO 10"[254], AND 4 1/4"[108] MUNTINS AVAILABLE.
- PRODUCT SHALL BE MANUFACTURED AND INSTALLED IN ACCORDANCE WITH PRODUCT APPROVALS; SEE MIAMI-DADE COUNTY NOTICE OF ACCEPTANCE OR FLORIDA BUILDING CODE APPROVAL
- SEE SPECIFICATIONS FOR ADDITIONAL INFORMATION.

**DURA-STORM**  
**2000**  
**IMPACT**  
**SERIES**

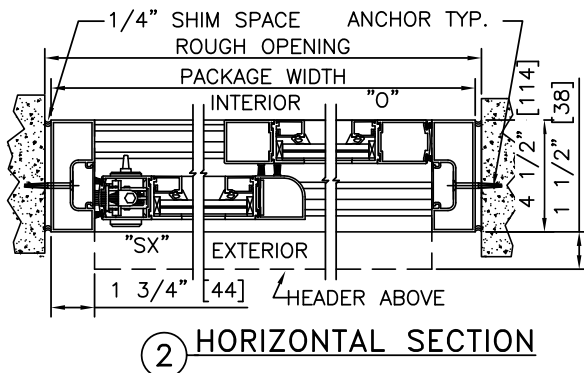
SINGLE SLIDE RIGHT HAND  
PROJECT INFORMATION

PROJECT NAME:  
LOCATION:  
DOOR NUMBER(S):  
DATE: SHEET: OF



**NOTES**

1. ELECTRICAL REQUIREMENTS: 120 VAC, 5 AMP MIN TO POWER OPERATOR BY ELECTRICAL CONTRACTOR.
2. ROUGH OPENING SHALL PROVIDE 1/4"[6] SHIM SPACE ON SIDES AND TOP OF PACKAGE.
3. ACTIVATION AND SAFETY ZONES ARE FOR REFERENCE ONLY; SEE ANSI/BHMA A156.10 FOR DETAILED REQUIREMENTS.
4. PRODUCT SHALL BE MANUFACTURED AND INSTALLED IN ACCORDANCE WITH PRODUCT APPROVALS; SEE MIAMI-DADE COUNTY NOTICE OF ACCEPTANCE OR FLORIDA BUILDING CODE APPROVAL
5. SEE SPECIFICATIONS FOR ADDITIONAL INFORMATION.

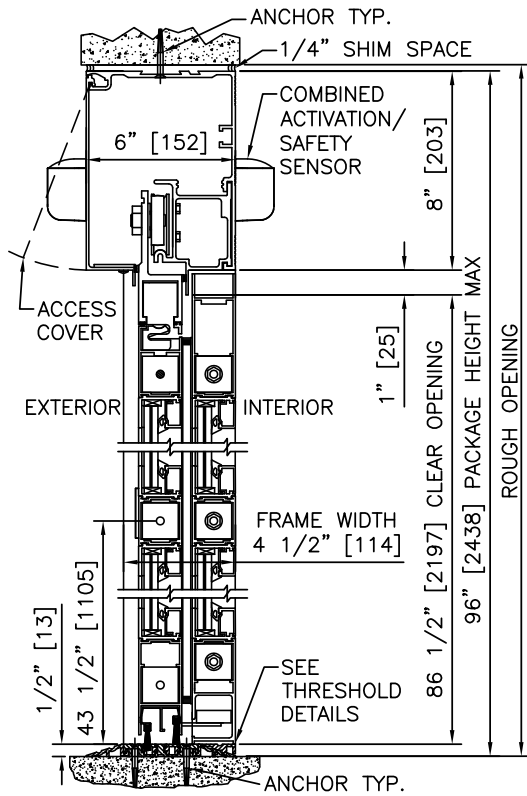


**MAX. PACKAGE DIMENSIONS (NARROW STILE)**

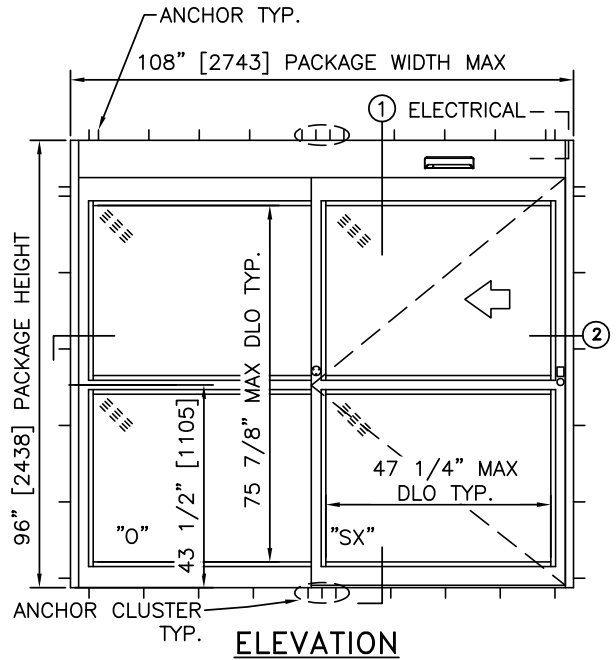
PACKAGE WIDTH	NOMINAL CLEAR DOOR OPENING	DOOR PANEL NOMINAL WIDTH	EMERGENCY BREAKOUT NOM. WIDTH
108"	46.4"	53.8"	50.7"

**DESIGN RATINGS**

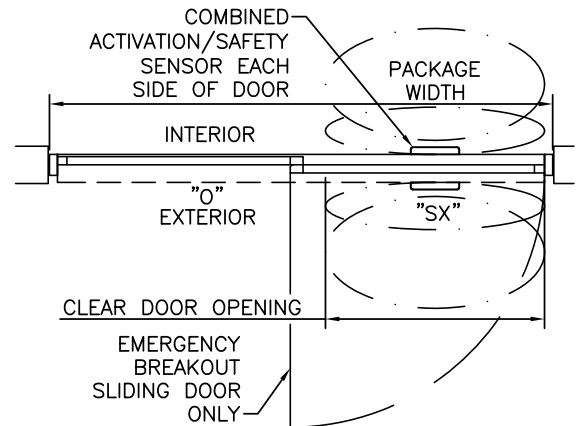
MISSILE IMPACT RATING	
<input checked="" type="checkbox"/>	LARGE AND SMALL MISSILE IMPACT
DESIGN PRESSURE RATING (PSF[Pa])	
POSITIVE	75 PSF [3591 Pa]
NEGATIVE	75 PSF [3591 Pa]



1 VERTICAL SECTION



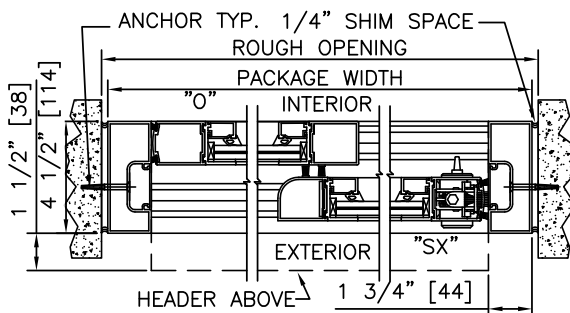
ELEVATION



PLAN

**NOTES**

1. ELECTRICAL REQUIREMENTS: 120 VAC, 5 AMP MIN TO POWER OPERATOR BY ELECTRICAL CONTRACTOR.
2. ROUGH OPENING SHALL PROVIDE 1/4"[6] SHIM SPACE ON SIDES AND TOP OF PACKAGE.
3. ACTIVATION AND SAFETY ZONES ARE FOR REFERENCE ONLY; SEE ANSI/BHMA A156.10 FOR DETAILED REQUIREMENTS.
4. PRODUCT SHALL BE MANUFACTURED AND INSTALLED IN ACCORDANCE WITH PRODUCT APPROVALS; SEE MIAMI-DADE COUNTY NOTICE OF ACCEPTANCE OR FLORIDA BUILDING CODE APPROVAL
5. SEE SPECIFICATIONS FOR ADDITIONAL INFORMATION.



2 HORIZONTAL SECTION

MAX. PACKAGE DIMENSIONS (NARROW STILE)

PACKAGE WIDTH	NOMINAL CLEAR DOOR OPENING	DOOR PANEL NOMINAL WIDTH	EMERGENCY BREAKOUT NOM. WIDTH
108"	46.4"	53.8"	50.7"

DESIGN RATINGS

MISSILE IMPACT RATING	
<input checked="" type="checkbox"/>	LARGE AND SMALL MISSILE IMPACT
DESIGN PRESSURE RATING (PSF[Pa])	
POSITIVE	75 PSF [3591 Pa]
NEGATIVE	75 PSF [3591 Pa]

**DURA-STORM**  
**2000**  
**IMPACT**  
**SERIES**

SINGLE SLIDE RIGHT HAND WITH AUTOMATIC LOCKING

PROJECT INFORMATION

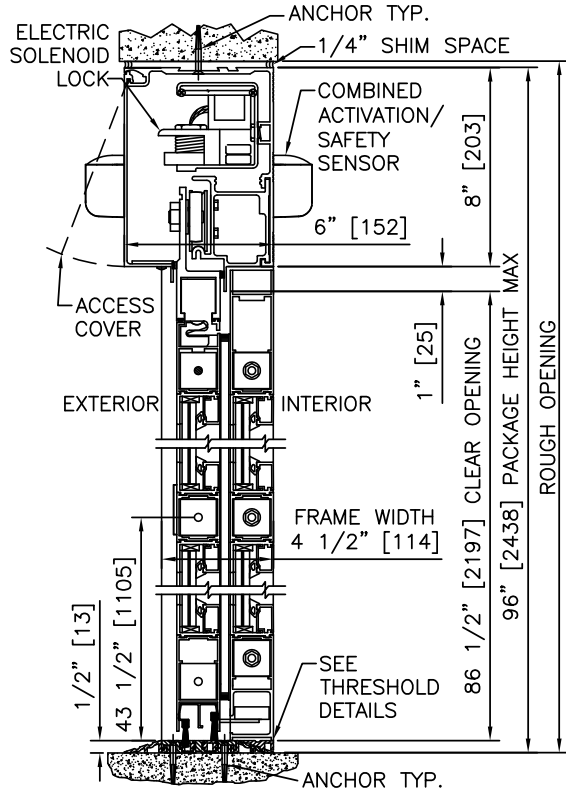
PROJECT NAME:

LOCATION:

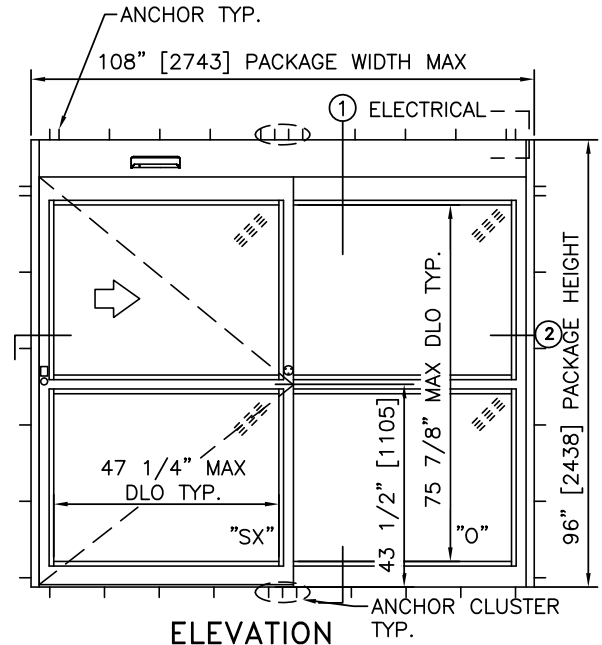
DOOR NUMBER(S):

DATE:

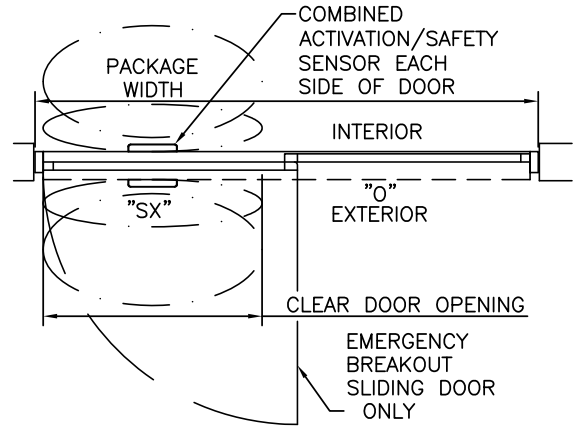
SHEET: OF



1 VERTICAL SECTION



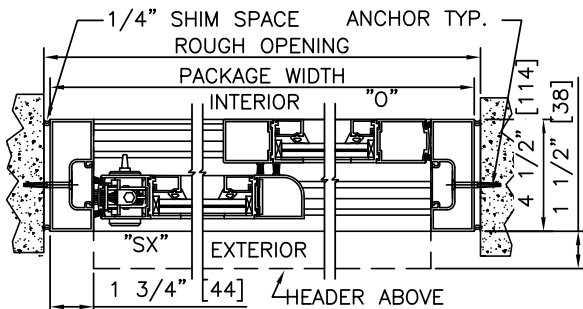
ELEVATION



PLAN

**NOTES**

1. ELECTRICAL REQUIREMENTS: BY ELECTRICAL CONTRACTOR
  - 1.1. 120 VAC, 5 AMP MIN TO POWER OPERATOR.
  - 1.2. CONTROL CIRCUIT FROM SECURE ACTIVATION TO OPERATOR.
2. ROUGH OPENING SHALL PROVIDE 1/4"[6] SHIM SPACE ON SIDES AND TOP OF PACKAGE.
3. ACTIVATION AND SAFETY ZONES ARE FOR REFERENCE ONLY; SEE ANSI/BHMA A156.10 FOR DETAILED REQUIREMENTS.
4. PRODUCT SHALL BE MANUFACTURED AND INSTALLED IN ACCORDANCE WITH PRODUCT APPROVALS; SEE MIAMI-DADE COUNTY NOTICE OF ACCEPTANCE OR FLORIDA BUILDING CODE APPROVAL
5. SEE SPECIFICATIONS FOR ADDITIONAL INFORMATION.



2 HORIZONTAL SECTION

MAX. PACKAGE DIMENSIONS (NARROW STILE)

PACKAGE WIDTH	NOMINAL CLEAR DOOR OPENING	DOOR PANEL NOMINAL WIDTH	EMERGENCY BREAKOUT NOM. WIDTH
108"	46.4"	53.8"	50.7"

DESIGN RATINGS

MISSILE IMPACT RATING	
<input checked="" type="checkbox"/>	LARGE AND SMALL MISSILE IMPACT
DESIGN PRESSURE RATING (PSF[Pa])	
POSITIVE	75 PSF [3591 Pa]
NEGATIVE	75 PSF [3591 Pa]

**DURA-STORM**  
**2000**  
**IMPACT**  
**SERIES**

SINGLE SLIDE LEFT HAND WITH AUTOMATIC LOCKING

PROJECT INFORMATION

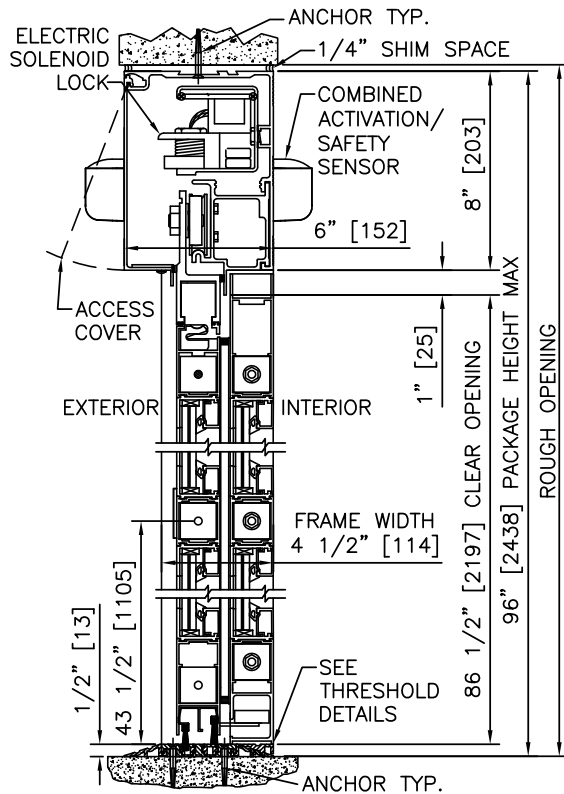
PROJECT NAME:

LOCATION:

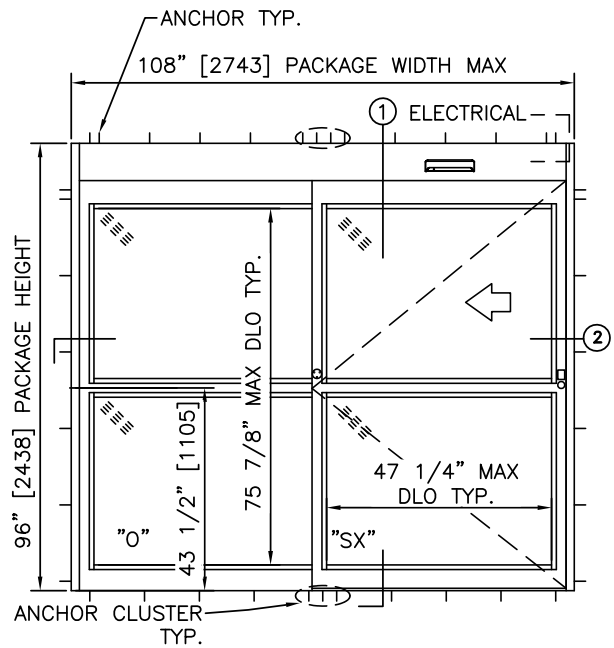
DOOR NUMBER(S):

DATE:

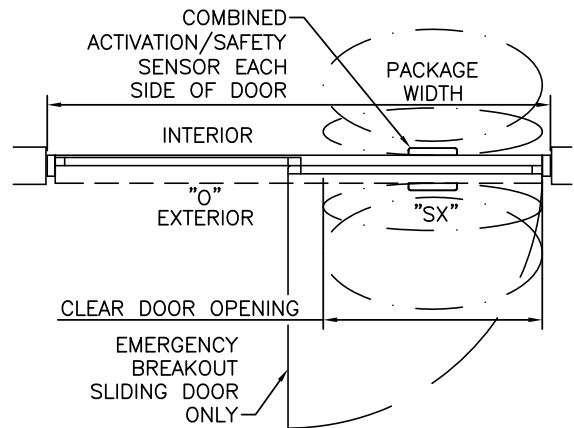
SHEET: OF



1 VERTICAL SECTION



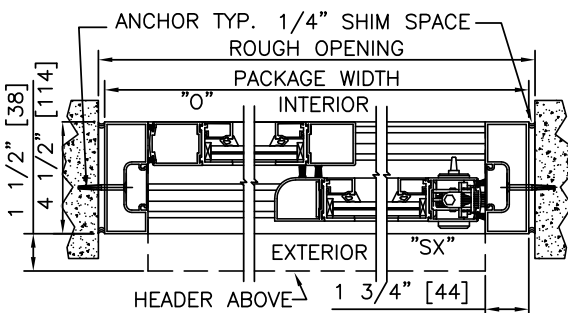
ELEVATION



PLAN

**NOTES**

1. ELECTRICAL REQUIREMENTS: BY ELECTRICAL CONTRACTOR
  - 1.1. 120 VAC, 5 AMP MIN TO POWER OPERATOR.
  - 1.2. CONTROL CIRCUIT FROM SECURE ACTIVATION TO OPERATOR.
2. ROUGH OPENING SHALL PROVIDE 1/4"[6] SHIM SPACE ON SIDES AND TOP OF PACKAGE.
3. ACTIVATION AND SAFETY ZONES ARE FOR REFERENCE ONLY; SEE ANSI/BHMA A156.10 FOR DETAILED REQUIREMENTS.
4. PRODUCT SHALL BE MANUFACTURED AND INSTALLED IN ACCORDANCE WITH PRODUCT APPROVALS; SEE MIAMI-DADE COUNTY NOTICE OF ACCEPTANCE OR FLORIDA BUILDING CODE APPROVAL
5. SEE SPECIFICATIONS FOR ADDITIONAL INFORMATION.



2 HORIZONTAL SECTION

MAX. PACKAGE DIMENSIONS (NARROW STILE)

PACKAGE WIDTH	NOMINAL CLEAR DOOR OPENING	DOOR PANEL NOMINAL WIDTH	EMERGENCY BREAKOUT NOM. WIDTH
108"	46.4"	53.8"	50.7"

DESIGN RATINGS

MISSILE IMPACT RATING	
<input checked="" type="checkbox"/>	LARGE AND SMALL MISSILE IMPACT
DESIGN PRESSURE RATING (PSF[Pa])	
POSITIVE	75 PSF [3591 Pa]
NEGATIVE	75 PSF [3591 Pa]