

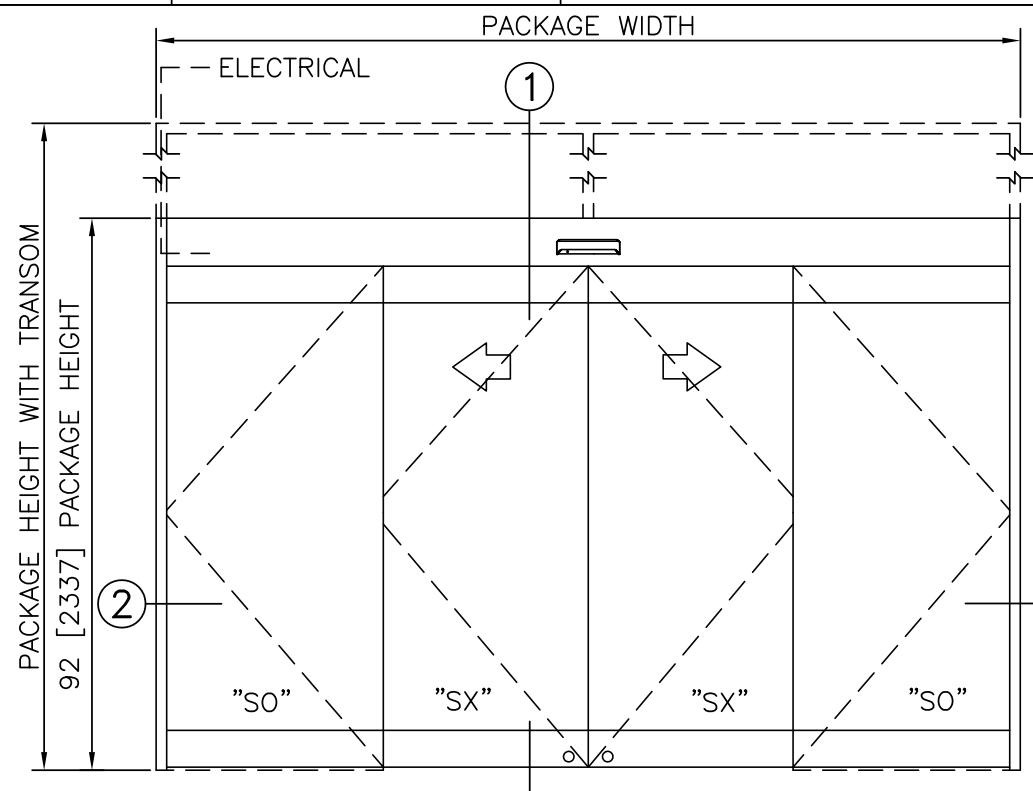
STANLEY
Access Technologies

DURA-GLIDE
3000AG
SERIES

BI-PART WITH OPTIONAL TRANSOM

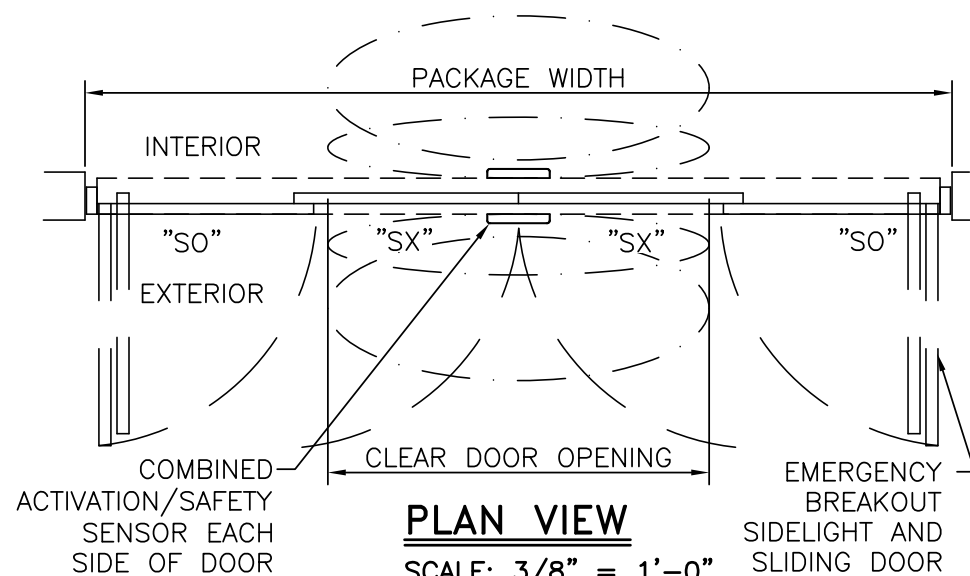
PROJECT INFORMATION

PROJECT NAME:	
LOCATION:	
DOOR NUMBER(S):	
DATE:	SHEET: OF



ELEVATION VIEW

SCALE: 3/8" = 1'-0"

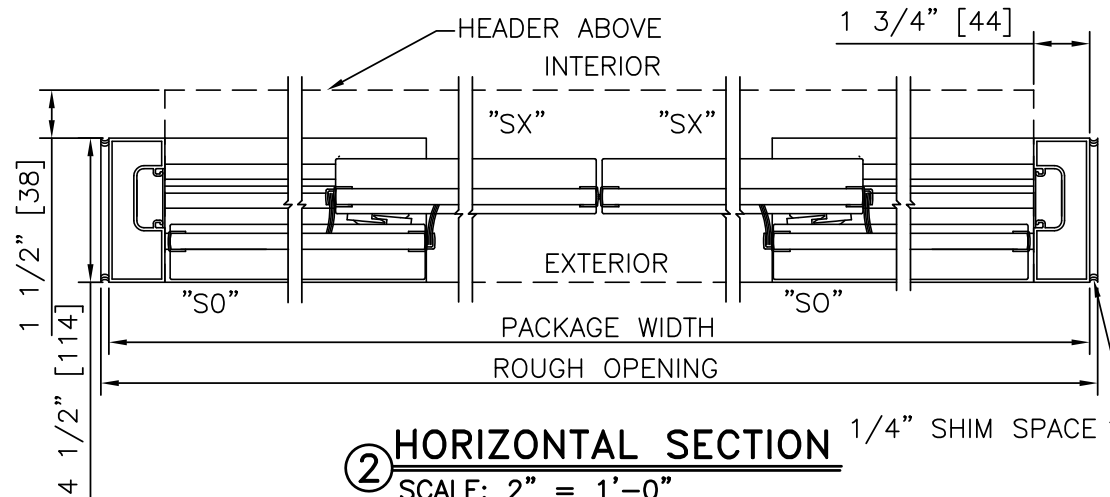


PLAN VIEW

SCALE: 3/8" = 1'-0"

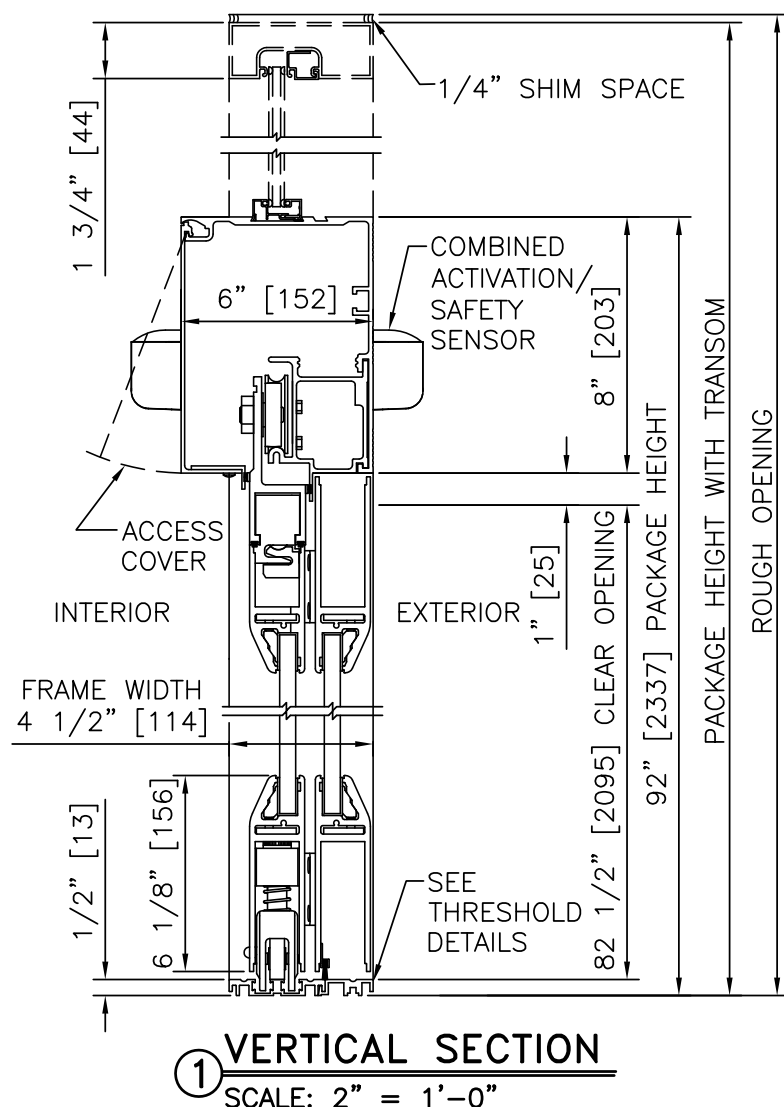
NOTES

- ELECTRICAL REQUIREMENTS: 120 VAC, 5 AMP MIN TO POWER OPERATOR BY ELECTRICAL CONTRACTOR.
- ROUGH OPENING SHALL PROVIDE 1/4"[6] SHIM SPACE ON SIDES AND TOP OF PACKAGE.
- LIMITS OF ACTIVATION AND SAFETY ZONES ARE FOR REFERENCE ONLY; SEE ANSI/BHMA A156.10 FOR DETAILED REQUIREMENTS.
- STANDARD LOCKING IS 2-POINT, AUTOMATIC LOCKING SYSTEMS AVAILABLE
- STANDARD GLAZING STOPS FOR ALL PANELS ARE 1/2"[13].
- STANDARD JAMB TUBES SHOWN; 6"[152] AVAILABLE.
- SEE SPECIFICATIONS FOR ADDITIONAL INFORMATION.



HORIZONTAL SECTION

SCALE: 2" = 1'-0"



VERTICAL SECTION

SCALE: 2" = 1'-0"

PRODUCT OPTIONS

- TRANSOM
 YES
 VERTICALS 1 2 3
- FINISH
 ANODIZED CLEAR CL2
 ANODIZED DK BRONZE
 CUSTOM
- LOCKING
 2-POINT
 AUTOMATIC LOCKING (ELECTRIC LOCK)
- THRESHOLDS
 SQ/BVL (EXT) SQ/BVL (INT)
 DBL BVL RECESSED
- ACTIVATION/SAFETY
 2 COMBINED ACTIVATION/SAFETY SENSORS
- OTHER OPTIONS
 ROTARY CTRL SWITCH KEYED
 UNINTERRUPTIBLE POWER SUPPLY
 FLY OPEN BOX

BI-PART FORMULAS

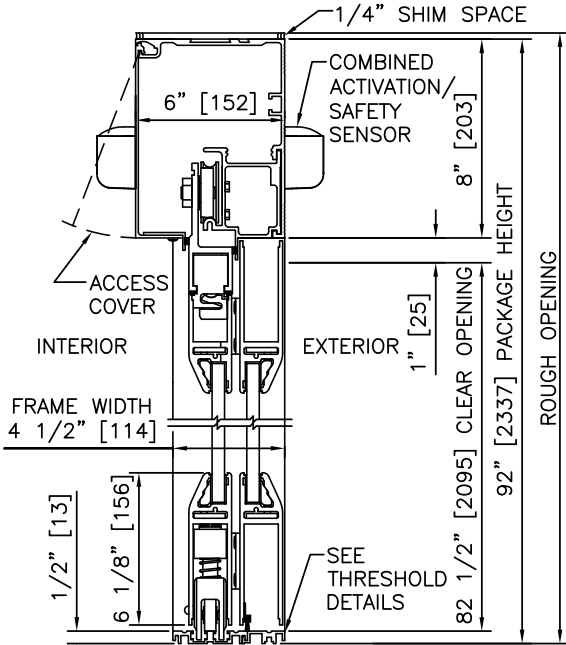
PACKAGE WIDTH = 2 X CLEAR DOOR OPENING + 23.8"
 CLEAR DOOR OPENING = 1/2 PACKAGE WIDTH - 11.9"
 EMERGENCY BREAKOUT WIDTH = PACKAGE WIDTH - 14.5"
 DOOR PANEL WIDTH = 1/4 PACKAGE WIDTH + 0.4"

TYPICAL PACKAGE DIMENSIONS (NARROW STYLE)			
PACKAGE WIDTH	NOMINAL CLEAR DOOR OPENING	DOOR PANEL NOMINAL WIDTH	EMERGENCY BREAKOUT NOM. WIDTH
120"	48.1"	30.4"	105.5"
144"	60.1"	36.4"	129.5"
168"	72.1"	42.4"	153.5"

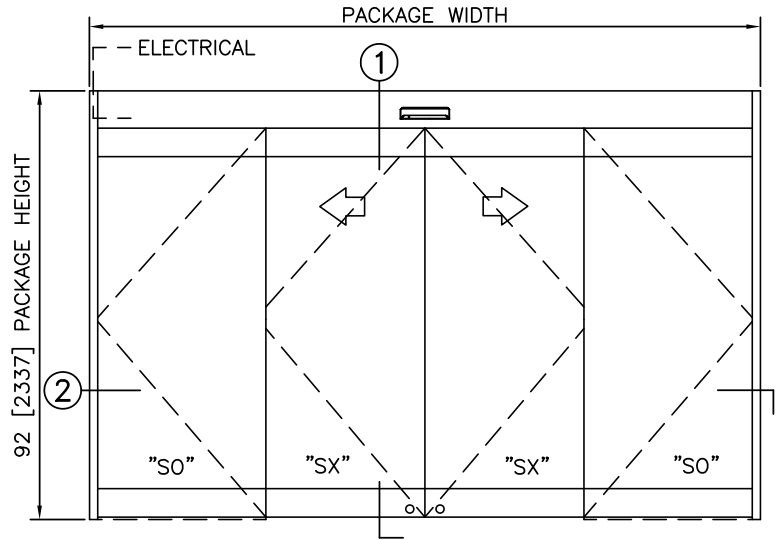
BI-PART WITH OPTIONAL TRANSOM

DURA-GLIDE
3000AG
SERIES

STANLEY
Access Technologies



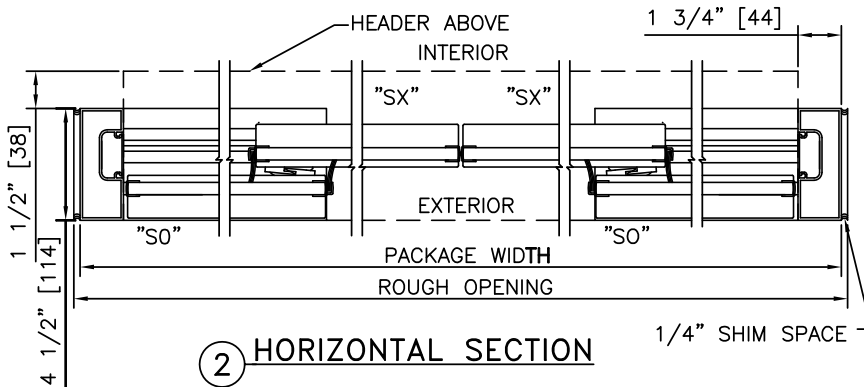
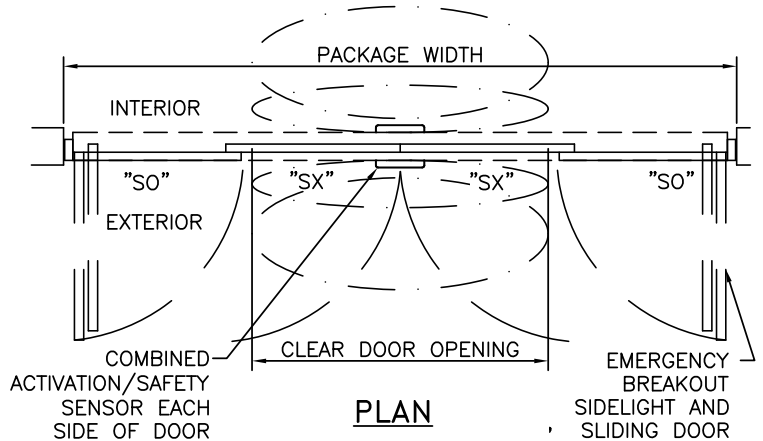
① VERTICAL SECTION



ELEVATION

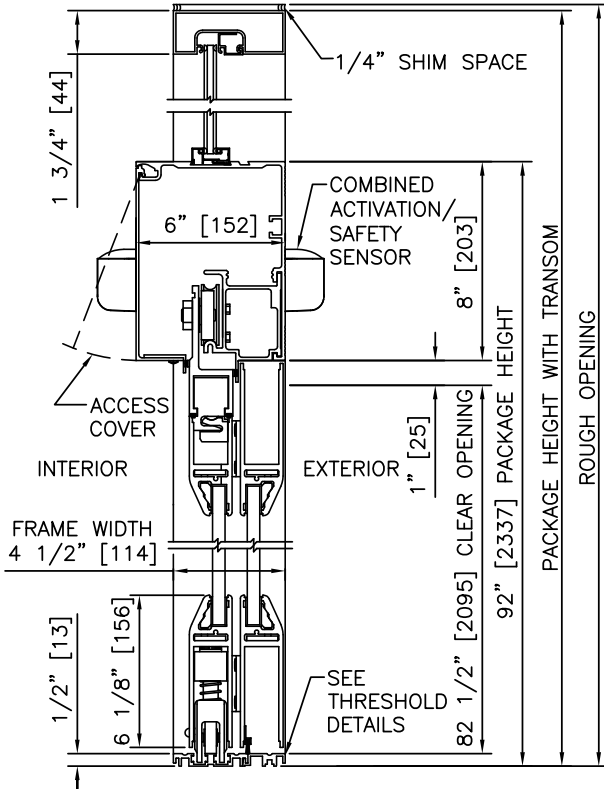
NOTES

1. ELECTRICAL REQUIREMENTS: 120 VAC, 5 AMP MIN TO POWER OPERATOR BY ELECTRICAL CONTRACTOR.
2. ROUGH OPENING SHALL PROVIDE 1/4"[6] SHIM SPACE ON SIDES AND TOP OF PACKAGE.
3. LIMITS OF ACTIVATION AND SAFETY ZONES ARE FOR REFERENCE ONLY; SEE ANSI/BHMA A156.10 FOR DETAILED REQUIREMENTS.
4. SEE SPECIFICATIONS FOR ADDITIONAL INFORMATION.

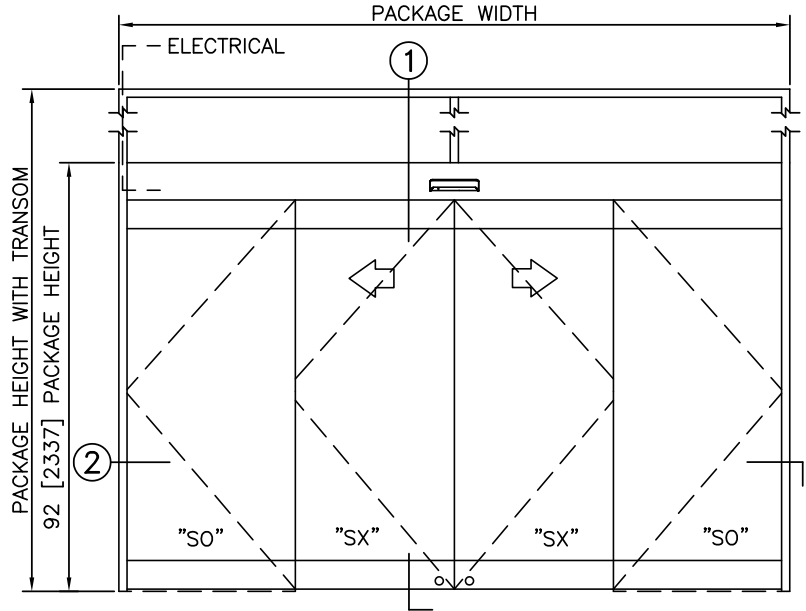


TYPICAL PACKAGE DIMENSIONS (NARROW STILE)

PACKAGE WIDTH	NOMINAL CLEAR DOOR OPENING	DOOR PANEL NOMINAL WIDTH	EMERGENCY BREAKOUT NOM. WIDTH
120"	48.1"	30.4"	105.5"
144"	60.1"	36.4"	129.5"
168"	72.1"	42.4"	153.5"



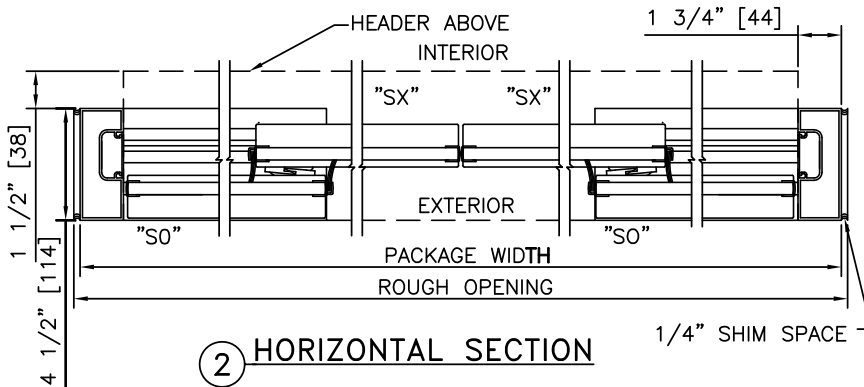
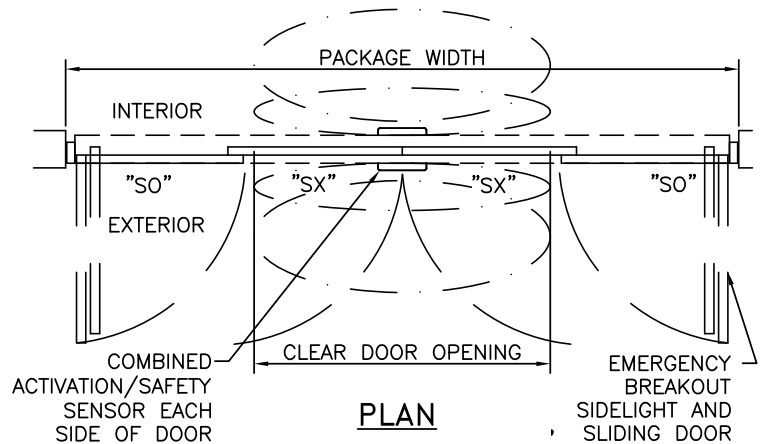
① VERTICAL SECTION



ELEVATION

NOTES

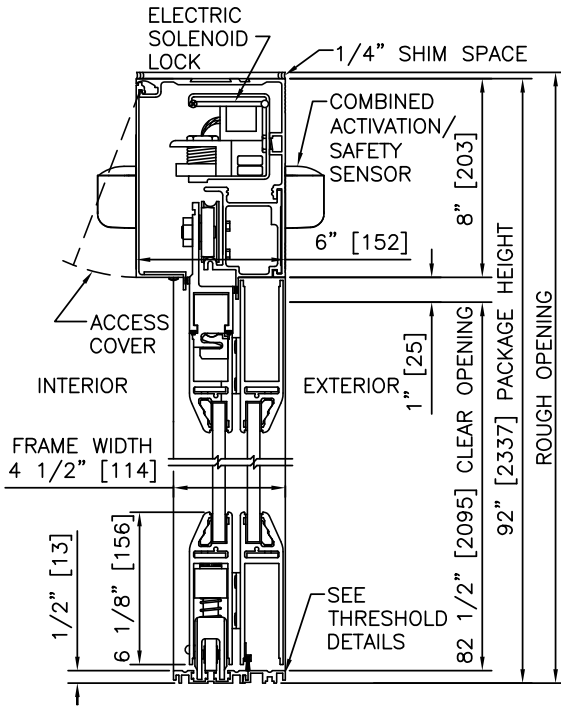
1. ELECTRICAL REQUIREMENTS: 120 VAC, 5 AMP MIN TO POWER OPERATOR BY ELECTRICAL CONTRACTOR.
2. ROUGH OPENING SHALL PROVIDE 1/4" [6] SHIM SPACE ON SIDES AND TOP OF PACKAGE.
3. LIMITS OF ACTIVATION AND SAFETY ZONES ARE FOR REFERENCE ONLY; SEE ANSI/BHMA A156.10 FOR DETAILED REQUIREMENTS.
4. SEE SPECIFICATIONS FOR ADDITIONAL INFORMATION.



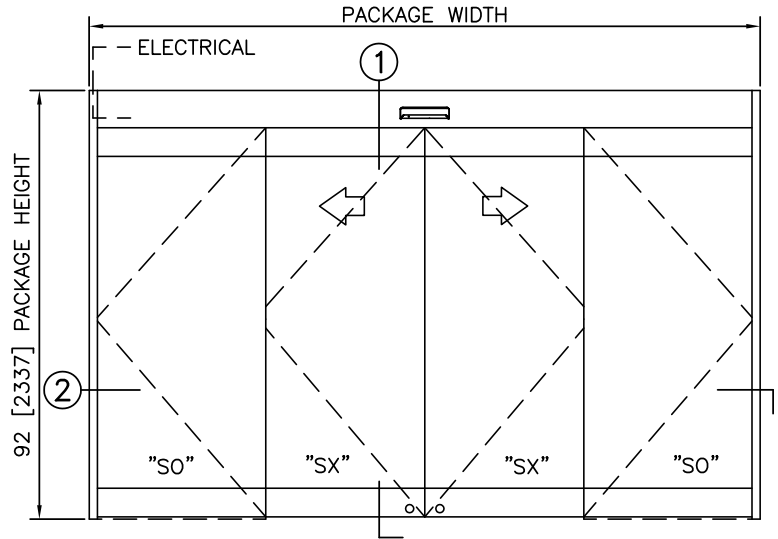
② HORIZONTAL SECTION

TYPICAL PACKAGE DIMENSIONS (NARROW STILE)

PACKAGE WIDTH	NOMINAL CLEAR DOOR OPENING	DOOR PANEL NOMINAL WIDTH	EMERGENCY BREAKOUT NOM. WIDTH
120"	48.1"	30.4"	105.5"
144"	60.1"	36.4"	129.5"
168"	72.1"	42.4"	153.5"



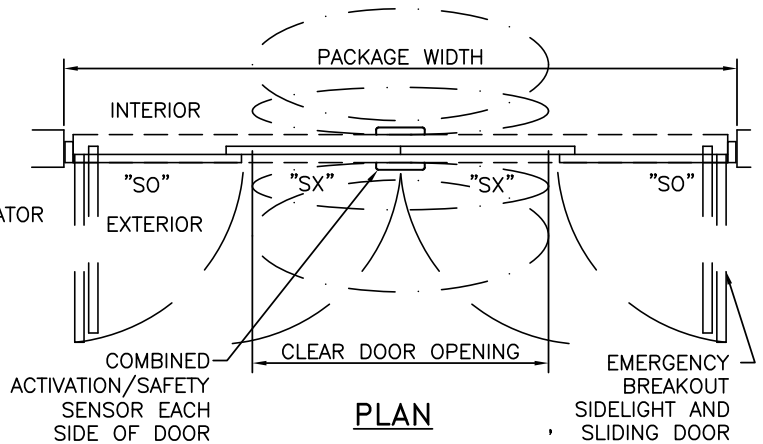
① VERTICAL SECTION



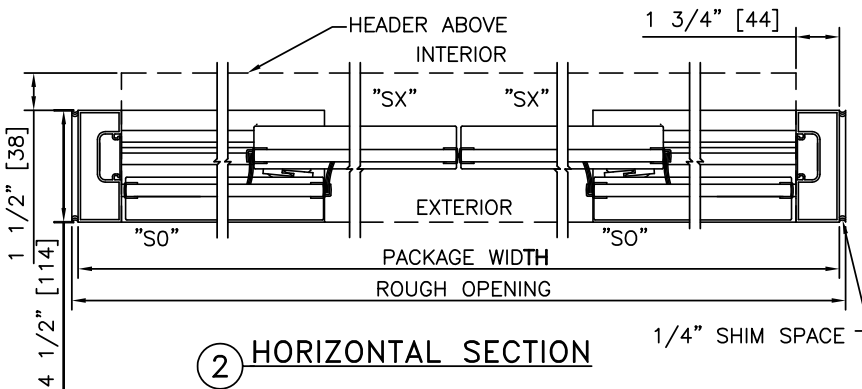
ELEVATION

NOTES

1. ELECTRICAL REQUIREMENTS: BY ELECTRICAL CONTRACTOR
 - 1.1. 120 VAC, 5 AMP MIN TO POWER OPERATOR
 - 1.2. CONTROL CIRCUIT FROM SECURE ACTIVATION TO OPERATOR
2. ROUGH OPENING SHALL PROVIDE 1/4" [6] SHIM SPACE ON SIDES AND TOP OF PACKAGE.
3. LIMITS OF ACTIVATION AND SAFETY ZONES ARE FOR REFERENCE ONLY; SEE ANSI/BHMA A156.10 FOR DETAILED REQUIREMENTS.
4. SEE SPECIFICATIONS FOR ADDITIONAL INFORMATION.



PLAN



② HORIZONTAL SECTION

TYPICAL PACKAGE DIMENSIONS (NARROW STILE)

PACKAGE WIDTH	NOMINAL CLEAR DOOR OPENING	DOOR PANEL NOMINAL WIDTH	EMERGENCY BREAKOUT NOM. WIDTH
120"	48.1"	30.4"	105.5"
144"	60.1"	36.4"	129.5"
168"	72.1"	42.4"	153.5"

**DURA-GLIDE
3000AG
SERIES**

BI-PARTING WITH TRANSOM & AUTOMATIC LOCKING

PROJECT INFORMATION

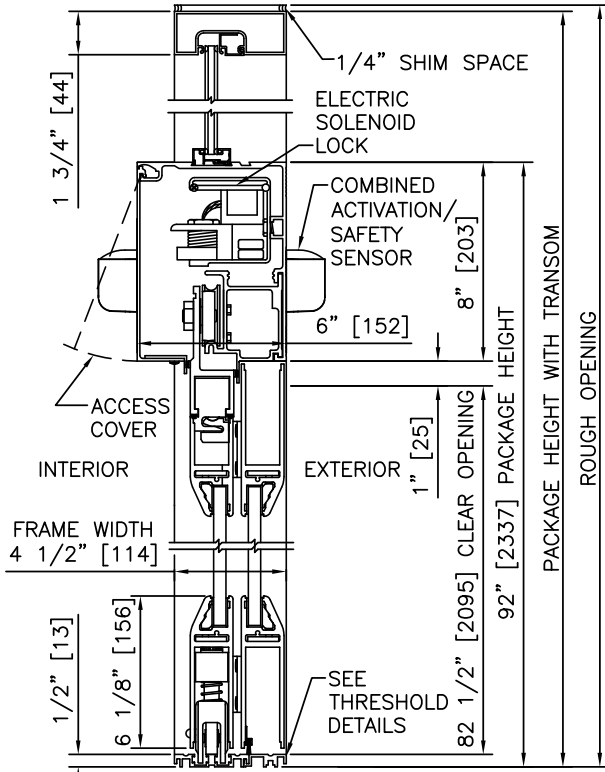
PROJECT NAME:

LOCATION:

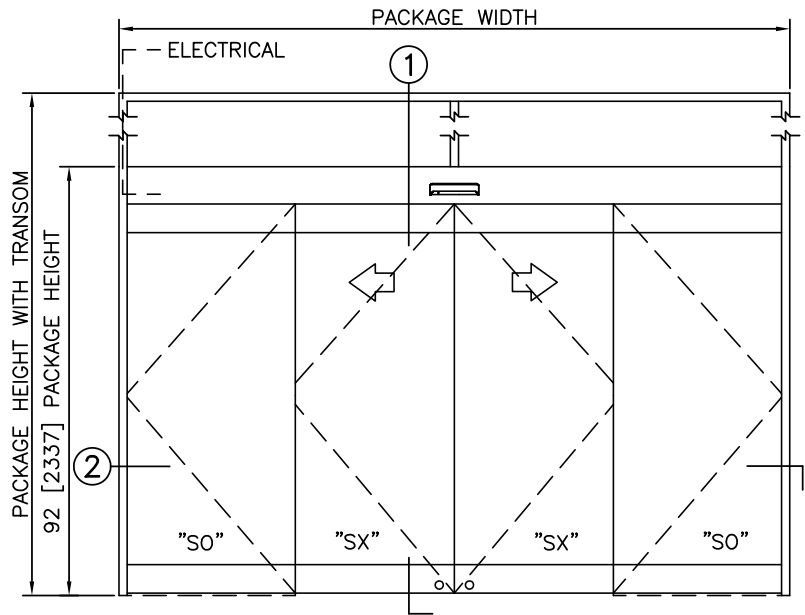
DOOR NUMBER(S):

DATE:

SHEET: OF



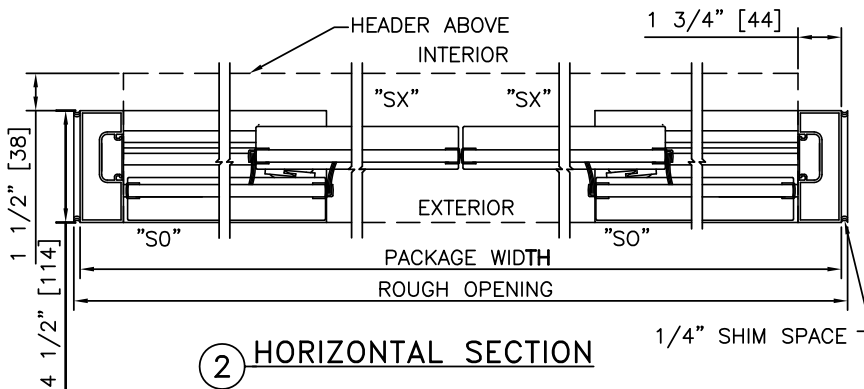
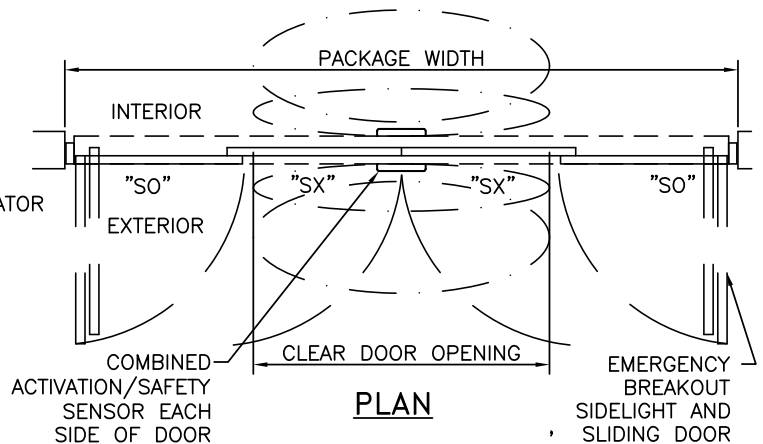
1 VERTICAL SECTION



ELEVATION

NOTES

1. ELECTRICAL REQUIREMENTS: BY ELECTRICAL CONTRACTOR
 - 1.1. 120 VAC, 5 AMP MIN TO POWER OPERATOR
 - 1.2. CONTROL CIRCUIT FROM SECURE ACTIVATION TO OPERATOR
2. ROUGH OPENING SHALL PROVIDE 1/4"[6] SHIM SPACE ON SIDES AND TOP OF PACKAGE.
3. LIMITS OF ACTIVATION AND SAFETY ZONES ARE FOR REFERENCE ONLY; SEE ANSI/BHMA A156.10 FOR DETAILED REQUIREMENTS.
4. SEE SPECIFICATIONS FOR ADDITIONAL INFORMATION.



2 HORIZONTAL SECTION

TYPICAL PACKAGE DIMENSIONS (NARROW STILE)

PACKAGE WIDTH	NOMINAL CLEAR DOOR OPENING	DOOR PANEL NOMINAL WIDTH	EMERGENCY BREAKOUT NOM. WIDTH
120"	48.1"	30.4"	105.5"
144"	60.1"	36.4"	129.5"
168"	72.1"	42.4"	153.5"