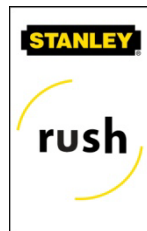


Pivot Doors



Owner's Operation & Maintenance Manual



Stanley Rush Products Group

65 Riviera Drive
Markham, ON L3R 5J6 Canada
(T) 905-944-8005
(F) 905-844-8006
StanleyRush-sales@sbdinc.com
www.stanleyrush.com

For Service, call Stanley Toll Free: 1-888-624-4238

TABLE OF CONTENTS

Section	Page
<i>Operation</i>	3
Door Closer	3
Hardware	3
Clearance Between Door and Frame	3
Vertical Height Adjustment	3
Condition of Door and Jamb	3
Top and Bottom Pivot	4
Automatic Operators	4
Closer Replacement	4
Replacing Cover Plates	4
Plan and Elevation	5
<i>Maintenance</i>	6
Cleaning Instructions	6
Care & Maintenance of Stainless Steel in Architectural Applications	7
General Precautions	7
Routine Cleaning	8
SPV Adhesive Tape Residue	8
Oil or Grease Marks	9
Rust Discoloration	9
Finger Marks	9
Special Precautions for Polished Finishes	10
Care and Cleaning of Anodized Aluminum	10
Cleaning Procedures	10
Inspection & Cleaning Instructions	11
<i>Product Development</i>	12

OPERATION

Door Closer

- 1) Make sure door open check and close check are functioning properly; adjust closer as necessary.
- 2) Closer may require seasonal adjustment.
- 3) Determine proper closing and latch speed.

Hardware

- 1) Check "Push-Pull" hardware for tightness and proper operation

Clearance Between Door and Frame

- 1) There should be uniform clearance between the vertical edges of the door and frame, or adjacent door leaf.
- 2) Check for wear spots on the door or floor when opening and closing the door. If these are present, door may need to be adjusted by service technician.
- 3) Check for uniform clearance across the top and bottom of the door. If misaligned, call for service technician to adjust door accordingly.
- 4) Check for obstructions around the door such as loose weather strip or misaligned latch and strike.

Vertical Height Adjustment

- 1) Check the clearance between bottom of door and the floor. The door should not be dragging on the floor. If the door needs to be raised to provide clearance, shims can be inserted at the bottom to accomplish this. Call a qualified service technician to adjust the door.

Condition of Door and Jamb

- 1) Out of square doors and jambs can cause scraping and poor operation of the door. If this is suspected, call service technician.
- 2) Check condition of door weather sweeps.

Top and Bottom Pivot

- 1) Open the door slightly to check for excess movement at the top pivot. If the pivot is securely fastened and there is still play in the door then the top pivot may need to be replaced.
- 2) Check for play at the bottom of the door. If the pivot is securely fastened, the bottom pivot may need to be replaced.
- 3) For floor pivots, Rixon 370 model, refer to Rixon Assa Abloy for maintenance requirements

Automatic Operators

- 1) Refer to instructions from automatic operator manufacturer for adjustment and maintenance.
- 2) Magic Force automatic operators refer to Stanley Access Technologies for maintenance requirements.
- 3) Tormax automatic floor closers refer to Tormax for maintenance requirements.

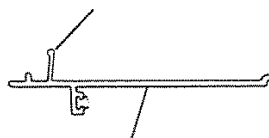
Closer Replacement

- 1) Remove door, shaft cover plate, track plate and closer mounting plate.
- 2) Replace closer, reinstall cover plates and door.
- 3) For LCN 2015 Closer, refer to supplier for maintenance.
- 4) For Rixon floor closers, refer to Rixon Assa Abloy for maintenance requirements.

Replacing Cover Plates

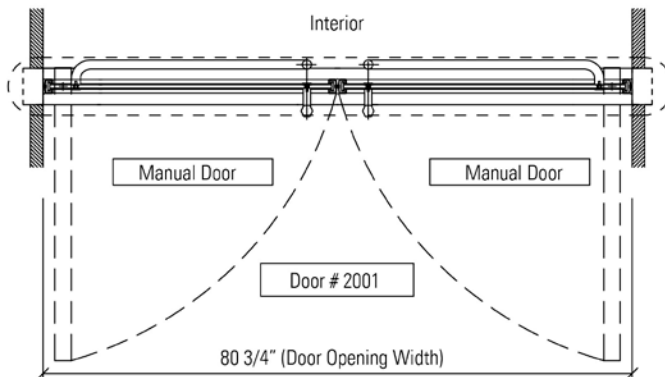
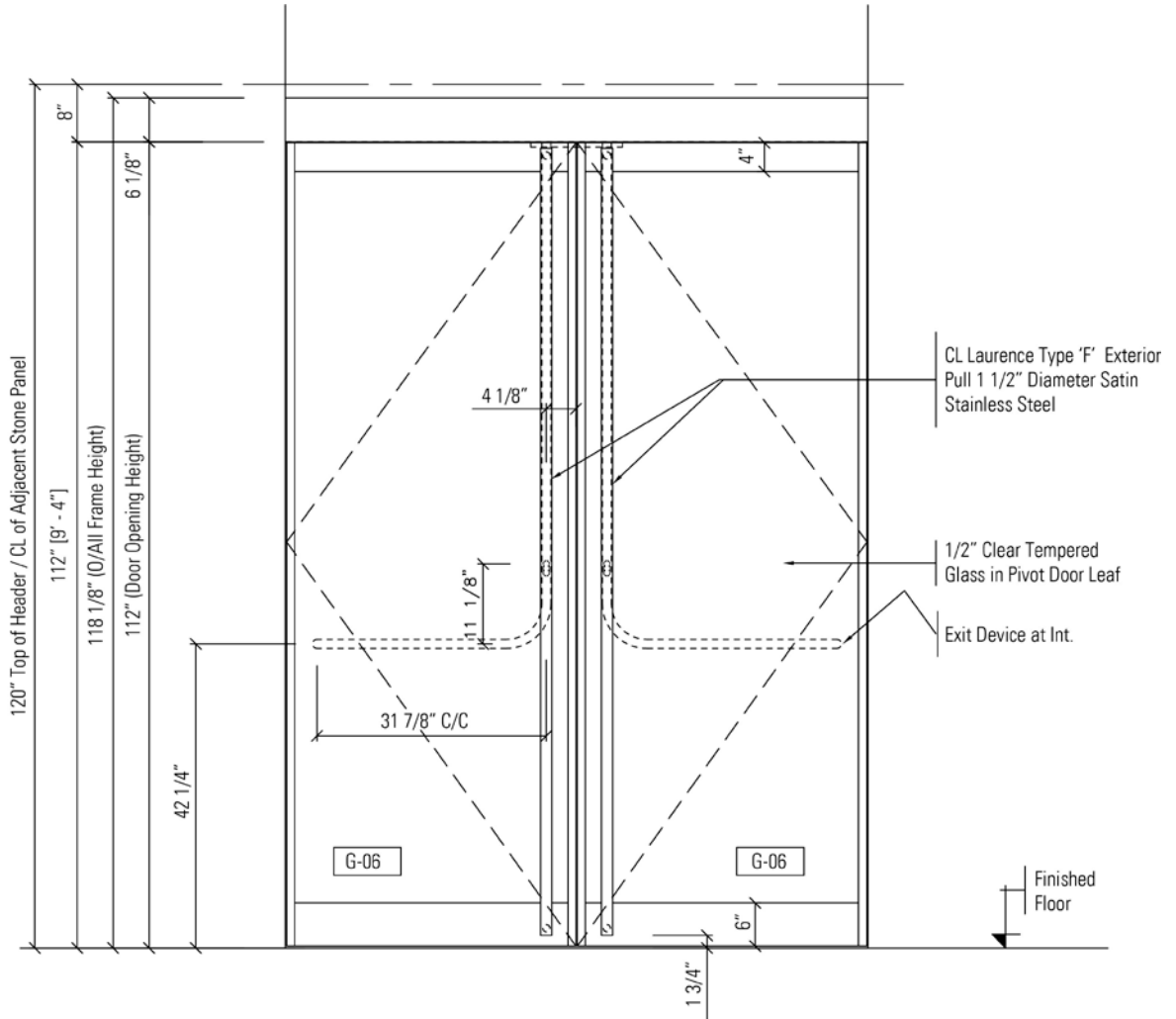
To properly secure the cover plates it may be necessary to slightly bend sections of the snap in leg as shown.

**BEND SECTION APPROX.
EVERY 12" IF SNAP
FIT IS TOO LOOSE.**



SHAFT COVER PLATE

PLAN AND ELEVATION



MAINTENANCE

Cleaning Instructions

- 1) Clean glass with water or regular glass cleaner. Avoid having cleaner come in contact with cement on all glass door wings as this will cause cement to deteriorate.
- 2) Clean aluminum or stainless steel with mild detergent and rinse well with clean water. Dry with soft cloth. Do not use abrasive cleaners.
- 3) During winter months, avoid using excessive ice-melting chemicals; also wash frequently to remove accumulated salt and slush.
- 4) Cleaning painted and stainless steel finishes

THE CARE AND CLEANING OF PAINTED MATERIAL: Today's factory applied heat cured painted finishes are durable and very colorfast. The Kynar® and Hylar® PVDF resin-based products that meet the AAMA 2605 specification with trade names such as Duranar® by PPG, Fluropon® by Valspar, Shernar® by Sherwin Williams or Trinar® by Akzo-Nobel are warranted to retain their color and gloss level for many years. However, to assure that they retain their original beauty, even these highly durable finishes should be cleaned occasionally. When selecting a cleaning solution use mild soap solutions that are safe for use with your bare hands such as those products that one would use to wash a car. Avoid the use of strong acid or alkali cleaners as they may damage the finish.

Solvents no stronger than mineral spirits or denatured alcohol may be used to remove grease, sealants or other materials. Never mix cleaners or cleaners and solvents as the resultant mixture can cause harmful or even dangerous results. Do not use abrasive cleaners or materials such as steel wool or abrasive brushes, which can also harm the surface.

Once heavy soil, grease or sealant is removed the mild soap solution should be applied with a soft cloth, sponge or soft brush. Rinse the surface thoroughly with clean water and dry with a soft cloth.

In coastal areas where the finish is exposed to salt spray or in areas containing heavy industrial pollutants the cleaning should take place on a regular basis. For example cleaning the painted finish can be scheduled as a part of the regular maintenance program for glass cleaning.

Care and Maintenance of Stainless Steel in Architectural Applications

Architectural applications for stainless generally specify the use of T304 stainless steels. This grade is an austenitic stainless steel.

It is specified in the following common architectural finishes:

- Imperial Finish** - a matte gray textured finish similar to a shot blasted pattern
- Ezeform Finish** - a rolled pattern finish available in both a bright and dull lustre
- #8 Mirror** - a highly polished reflective finish (mirror type finish)
- #4 Satin** - a general purpose finish produced by abrasive belt polishing of cold rolled sheet
- XL Blend S** - a finish similar to #4 but finer in texture, handling marks, scratches, and minor surface damage are readily masked by localized re-grinding on this finish

All stainless architectural materials are supplied in the passivated or corrosion resistant condition. They do require periodic cleaning just as other materials do when in service. Exterior components for example are subjected to road salt spray at ground level and deposits from polluted urban air at higher levels, Finger marks, deposits from tobacco smoke, and other stains can detract from the original, attractive appearance of interior stainless applications.

One of the outstanding features of stainless steels is the ease with which its fine appearance can be maintained. There are some important considerations that should be understood by those charged with the responsibility to care and maintain these architectural products.

General Precautions:

- 1) Wash all stainless areas regularly with warm water and mild soap or detergent using a clean cloth or soft brushes.
- 2) The frequency of regular maintenance cleaning will depend on the degree of contamination and the aesthetic needs of the individual user, in the case of exterior panels, once a year is the minimum recommended practice. Interior areas may need frequent attention at ground level due to finger marks etc. with higher levels receiving yearly or twice yearly attention.
- 3) Do not allow dirt to accumulate. Remove any stubborn grime using recommended cleansers and methods, do not use ordinary steel wool or other metal scrapers to remove stubborn dirt as these will contaminate the stainless and mar the architectural finishes. Do not use harsh, abrasive untested cleaners in stubborn areas.

- 4) Do not allow the cleaning agent come in contact with cement on all glass door wings as this will cause cement to deteriorate
- 5) As tapes, resins and finishes react differently to certain cleaning agents, it is recommended to test the cleaning agent on a low visibility area to check for surface discoloration before proceeding. It is advisable to work on reasonably small sections at a time, e.g. 4' x 4'.
- 6) Always clean in the direction of original polish or grit lines.
- 7) Always rinse after cleaning and blow dry or wipe dry.

Routine Cleaning:

- 1) Rinse with water to remove as much soil as possible.
- 2) For normal stains, air born dirt, etc., apply a soap or liquid detergent product or 5% ammonia solution in water (preferably warm) to the panels.
- 3) Rinse well with water.
- 4) Remove excess water ensuring that all strokes are in the same direction (following the polish lines) preferably top to bottom and overlapping and let dry. The use of a "squeegee" is helpful in facilitating this drying process.

SPV Adhesive Tape Residue:

Surface protective materials when peeled off the stainless can leave minor amounts of tape residue on the surface which can facilitate the adherence of airborne dirt particles. Proper removal is desirable to maintain good overall appearance.

- 1) Rinse with water to remove superficial dirt.
- 2) Apply a stainless cleaner and polisher or organic solvents (e.g. methyl hydrate or rubbing alcohol) or paint or lacquer thinners with a rag, sponge or fiber brush with a soft nylon or natural bristle using long, light strokes.
- 3) Rinse well with water.
- 4) If necessary, repeat the above steps until all tape residue is removed.
- 5) Remove excess water ensuring that all strokes are in the same direction (following the polish lines) preferably top to bottom and overlapping and let dry. The use of a "squeegee" is helpful in facilitating this drying process.

Oil or Grease Marks:

- 1) Rinse with water to remove as much deposits as possible.
- 2) Where grime contains significant amounts of oil or grease, apply an organic solvent such as acetone, ether, alcohol, toluol, xylol, benzol, benzine, naptha or a 5 to 15% caustic soda solution (hot or cold) with a sponge or rag.
- 3) Rinse well with water.
- 4) Remove excess water ensuring that all strokes are in the same direction (following the polish lines) preferably top to bottom and overlapping and let dry. The use of a "squeegee" is helpful in facilitating this drying process.

Rust Discoloration:

- 1) Rinse with water to remove superficial dirt.
- 2) To remove rust spots from carbon steel contamination or high temperature discoloration marks, apply a nitric acid solution (one part of nitric acid to nine parts of warm water) and let it stand for 30 to 60 minutes before rinsing. Wear rubber gloves and always follow manufacturer's dilution instructions. It is recommended that the minimum concentration and resident time to accomplish the job be employed.
- 3) Rinse well with water.
- 4) Remove excess water ensuring that all strokes are in the same direction (following the polish lines) preferably top to bottom and overlapping and let dry. The use of a "squeegee" is helpful in facilitating this drying process.

Finger Marks:

- 1) Rinse with water to remove superficial dirt.
- 2) To remove finger marks and smears, and suppress their appearance in heavy traffic areas, apply a soap or liquid detergent product or organic solvent (e.g. acetone, alcohol, methylated spirits) to the panels.
- 3) Rinse well with water. Remove excess water ensuring that all strokes are in the same direction (following the polish lines) preferably top to bottom and overlapping and let dry. The use of a "squeegee" is helpful in facilitating this drying process.

Special Precautions on Polished Finishes:

- 1) **#8 Mirror** - because of the highly reflective nature of this finish, it is necessary to take extra precautions to minimize scratching and marring of this finish. In some cases it may be necessary to remove the contaminant and re-buff the surface to restore to the original lustre.
- 2) **#4 Satin and XL Blend S** - because these finishes have a grit line pattern always rub following the polish lines using sufficient pressure to remove adherent dirt particles and stains. For stubborn cases, abrasive cleaners may be used. Household cleaning powders such as Ajax, Comet, Dutch Cleanser*** may be applied using a damp cloth following the polishing lines.

Note: Experimentation in a low visibility area to check for surface discoloration is advised, in some cases, it may be necessary to remove the contaminant and re-polish the surface to restore to the original appearance. This re-polishing is easily done with Scotchbrite*** pads or grinders in the case of XL Blend S.

*** Proprietary cleansers listed are not an endorsement of a specific product and is only intended to serve as examples of the type of cleaning agents that are commercially available. All products should be tested prior to usage and always follow the manufacturer's instructions and directions of use.

Care and Cleaning of Anodized Aluminum

Cleaning Procedures

Cleaning procedures for aluminum should be initiated as soon as practical after completion of installation to remove construction soils and accumulated environmental soils and discolorations.

Cleaning work should start at the top of the building and proceed to the ground level in a continuous drop. Using a forceful water spray, an area the width of the stage or scaffolding should be rinsed as cleaning proceeds from the top down.

Because surface soils may be light or heavy, several progressively stronger cleaning procedures may be employed depending of the severity and tenacity of the soil. Only trial and simplest procedure to remove the soil is the one that should be used.

For light soils, the simplest procedure is to flush the surface with water using moderate pressure. If soil is still present after air-drying the surface, scrubbing with a brush or sponge and concurrent spraying with water should be tried. If soils still adhere, than a mild detergent cleaner should be used with brushing or sponging. Washing should be done with uniform pressure, first horizontally then vertically. Following the washing the surfaces must be thoroughly rinsed by spraying with clean water.

If it is necessary to remove oil, wax, polish, or other similar materials, MEK or an equivalent solvent is recommended for clean up. Extreme care must be exercised when solvents of this type are used since they may damage organic sealants, gaskets and finishes. These solvents should never be used on anodic

finishes protected by clear organic coatings unless the organic coating has deteriorated and should be removed.

Removing heavy surface soils may require the use of an abrasive cleaning pad. In this procedure the pad is thoroughly soaked with clean water or a mild detergent cleaner and the metal surface is hand scrubbed with uniform pressure. Scrubbing action should be in the direction of the metal grain. Scrubbing with a nylon-cleaning pad impregnated with a surface protectant material is also recommended for removing stubborn soils and stains. After scrubbing, the surface should be rinsed thoroughly with clean water to remove all residue.

In some circumstances it may be desirable to wipe the surface with a solvent. The surface is then permitted to air dry or is wiped dry with a chamois, squeegee or lint-free cloth.

Using power-cleaning tools may be necessary to remove unusually heavy soils from large areas including panels and column covers. When using such tools, the surface must be continually flushed with clean water or a mild detergent cleaning solution to provide lubrication and a medium for carrying away the dirt. After an area has been machine scrubbed, it must be rinsed with clean water and thoroughly scrubbed with a fairly stiff bristle brush. The surface may then be air dried or wiped dry.

Inspection & Cleaning Precautions

Care must be taken to see that metal seams, crevices, sills and other areas that can trap water, cleaner or dirt are carefully cleaned and dried. A final inspection, by a qualified representative is recommended, to ensure that no discoloration or stains remain on the surface.

Certain precautions must be taken when cleaning anodized aluminum surfaces. Aluminum finishes must first be identified to select the appropriate cleaning method.

- Aggressive alkaline or acid cleaners must never be used.
- Cleaning hot, sun-heated surfaces should be avoided since possible chemical reactions will be highly accelerated and cleaning non-uniformity could occur.
- Strong organic solvents, while not affecting anodized aluminum, may extract stain-producing chemicals from sealants and may affect the function of the sealants.
- Strong cleaners should not be used on window glass and other components where it is possible for the cleaner to come in contact with the aluminum.

Excessive abrasive rubbing should not be used since it could damage the finish.

PRODUCT DEVELOPMENT

A continuing research and development program ensures a high standard of quality in design, workmanship and service performance. This Installation and Maintenance Manual may differ slightly from current production models as a result of this continuing R&D program.



Stanley Rush Products Group

65 Riviera Drive
Markham, ON L3R 5J6 Canada
(T) 905-944-8005
(F) 905-844-8006
StanleyRush-sales@sbdinc.com
www.stanleyrush.com

For Service, call Stanley Toll Free: 1-888-301-5407