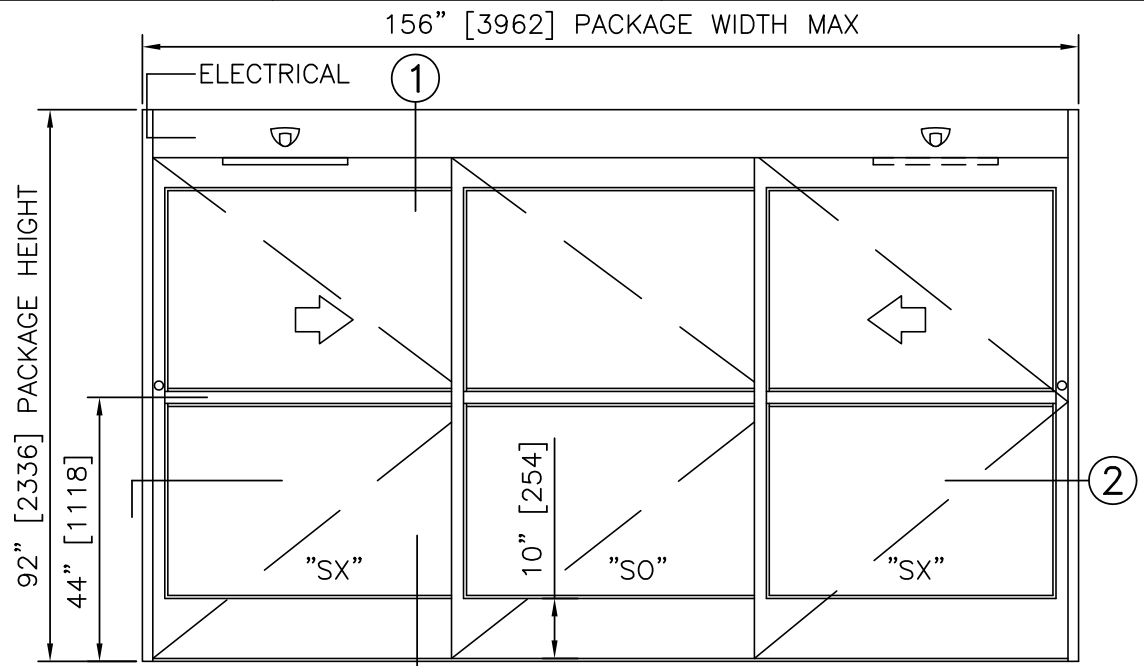


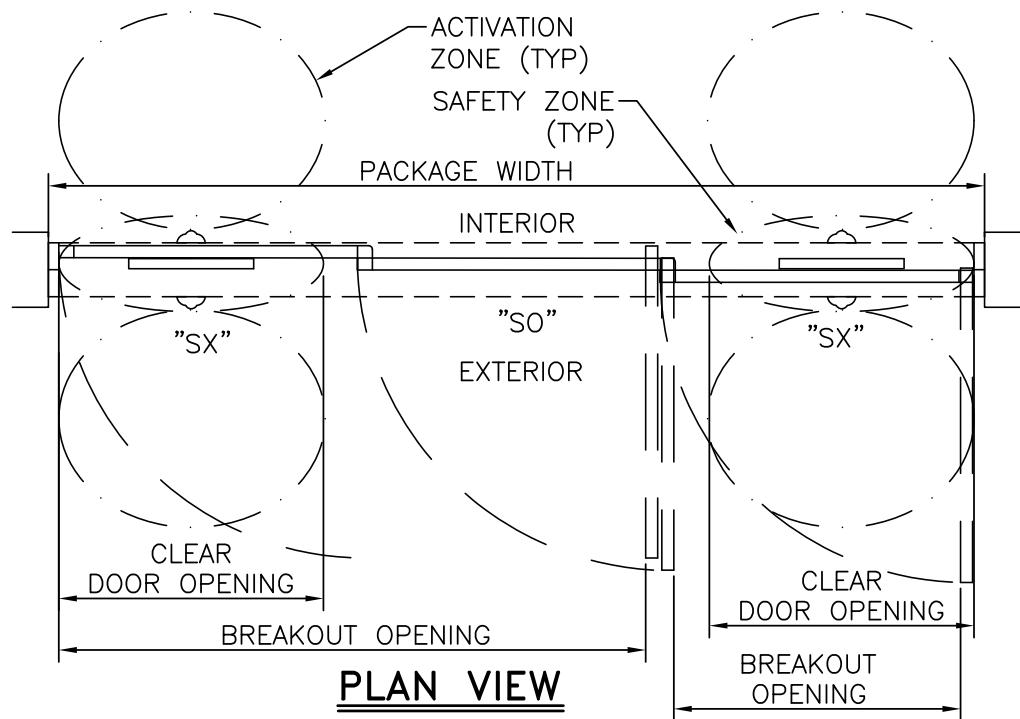


# BYPASS FBO

BYPASS, FULL BREAKOUT	
PROJECT INFORMATION	
PROJECT NAME:	
LOCATION:	
DOOR NUMBER(S):	
DATE:	SHEET: OF

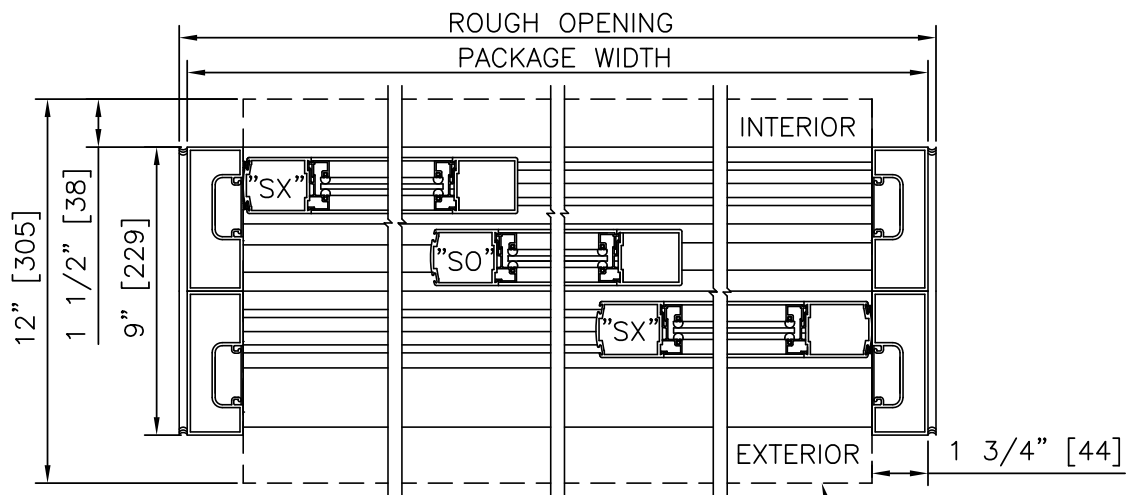


**ELEVATION VIEW**  
SCALE: 3/8" = 1'-0"

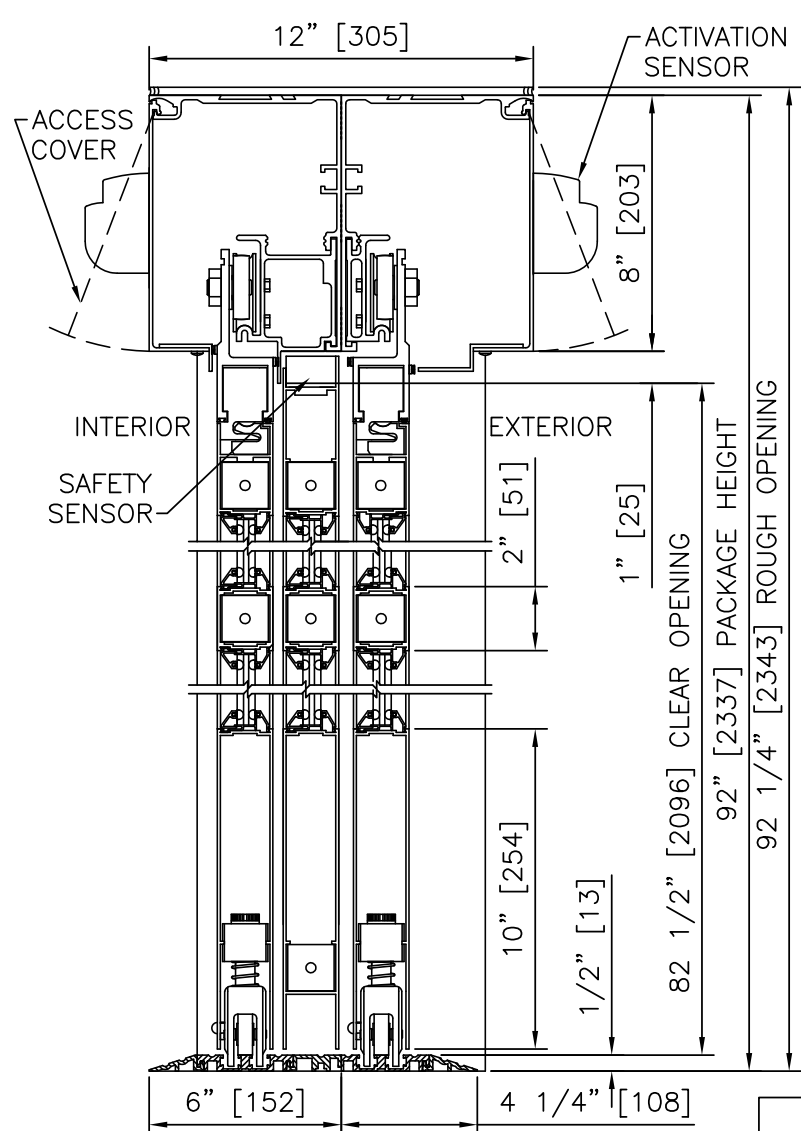


**PLAN VIEW**  
SCALE: 3/8" = 1'-0"

- NOTES**
1. ELECTRICAL REQUIREMENTS: 120 VAC, 5 AMP MIN TO POWER OPERATOR BY ELECTRICAL CONTRACTOR.
  2. ROUGH OPENING SHALL PROVIDE 1/4"[6] SHIM SPACE ON SIDES AND TOP OF PACKAGE.
  3. LIMITS OF ACTIVATION AND SAFETY ZONES ARE FOR REFERENCE ONLY; SEE ANSI/BHMA A156.10 FOR DETAILED REQUIREMENTS.
  4. STANDARD GLAZING STOPS FOR SLIDING AND FIXED PANELS IS 1/4"[6]; 5/8"[16] AND 1"[25] AVAILABLE.
  5. SEE SPECIFICATIONS FOR ADDITIONAL INFORMATION.



**HORIZONTAL SECTION**  
SCALE: 2" = 1'-0"



**VERTICAL SECTION**  
SCALE: 2" = 1'-0"

### PRODUCT OPTIONS

- FINISH**
- ANODIZED CLEAR CL2
  - ANODIZED DK BRONZE
  - CUSTOM
- LOCKING**
- MULTI-POINT (STD)
- STILES**
- NARROW
- BOTTOM RAILS**
- 10" (STD)
- THRESHOLDS**
- SQ/BVL (EXT)
  - DBL BVL
  - SQ/BVL (INT)
  - RECESSED
- ACTIVATION/SAFETY**
- 4 SU-100/2 STANGUARD (STD)
- OTHER OPTIONS**
- ROTARY CTRL SWITCH
  - UNINTERRUPTIBLE POWER SUPPLY
  - KEYED

TYPICAL PACKAGE DIMENSIONS (NARROW STILE)			
PACKAGE WIDTH	NOMINAL CLEAR DOOR OPENING*	DOOR PANEL NOMINAL WIDTH	EMERGENCY BREAKOUT NOM. WIDTH**
120"	32.1"	40.3"	110.8"
144"	40.1"	48.3"	134.8"
156"	44.1"	52.3"	146.8"

\* NOMINAL CLEAR DOOR OPENING IS FOR EACH OPENING.  
 \*\* NOMINAL EMERGENCY BREAKOUT WIDTH IS TOTAL AVAILABLE WIDTH FOR EGRESS.

**BYPASS-FBO FORMULAS**

PACKAGE WIDTH = 3 CLEAR DOOR OPENING + 23.7"  
 CLEAR DOOR OPENING = 1/3 PACKAGE WIDTH - 7.9"  
 EMERGENCY BREAKOUT WIDTH = PACKAGE WIDTH - 9.3"  
 DOOR PANEL WIDTH = 1/3 PACKAGE WIDTH + 0.3"

**BYPASS, FULL BREAKOUT**

## BYPASS FBO