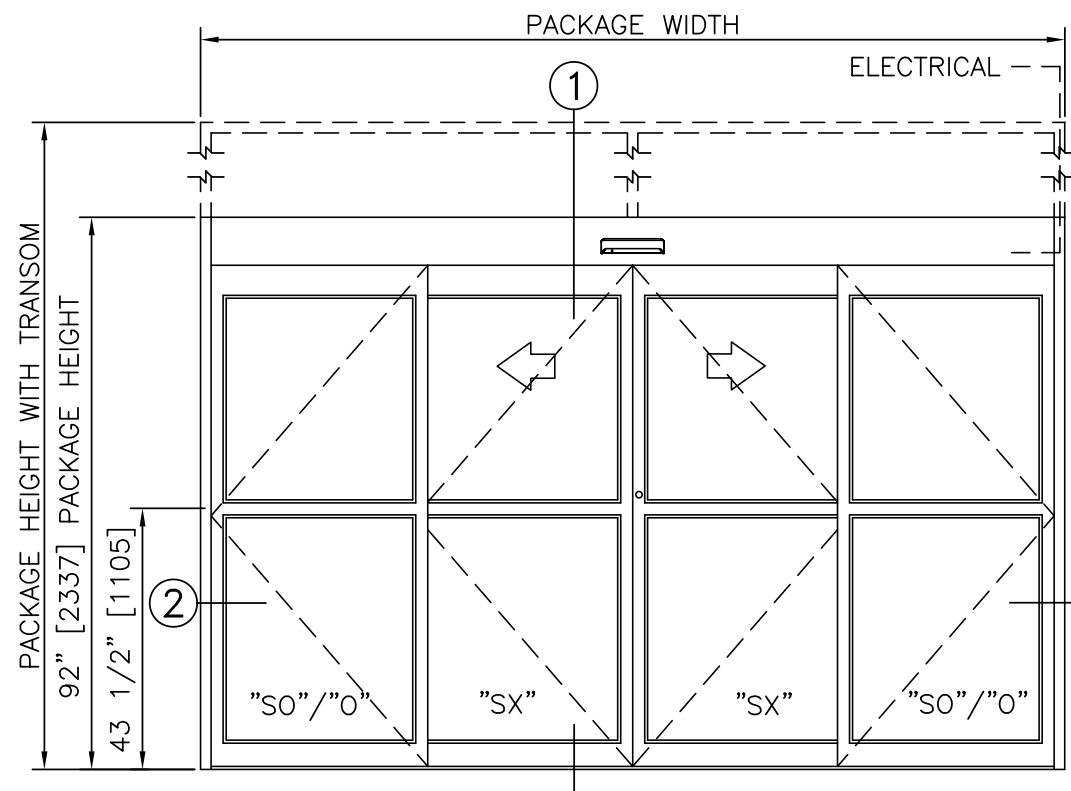
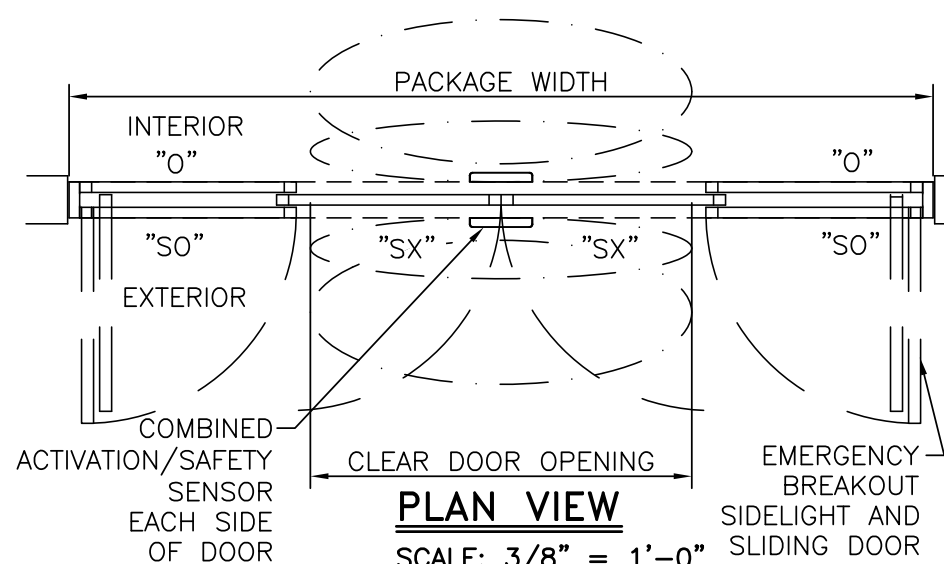


| | |
|--|-----------|
| BI-PART, EXTERIOR SIDELIGHT, WITH OPTIONAL TRANSOM | |
| PROJECT INFORMATION | |
| PROJECT NAME: | |
| LOCATION: | |
| DOOR NUMBER(S): | |
| DATE: | SHEET: OF |



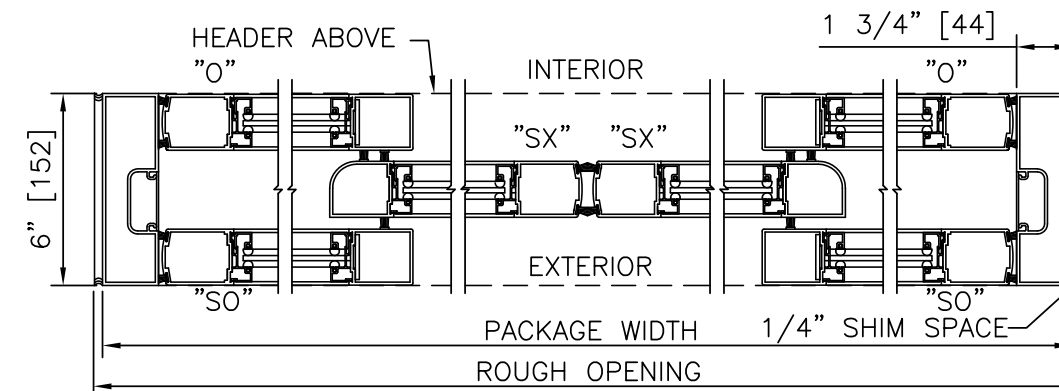
ELEVATION VIEW
SCALE: 3/8" = 1'-0"



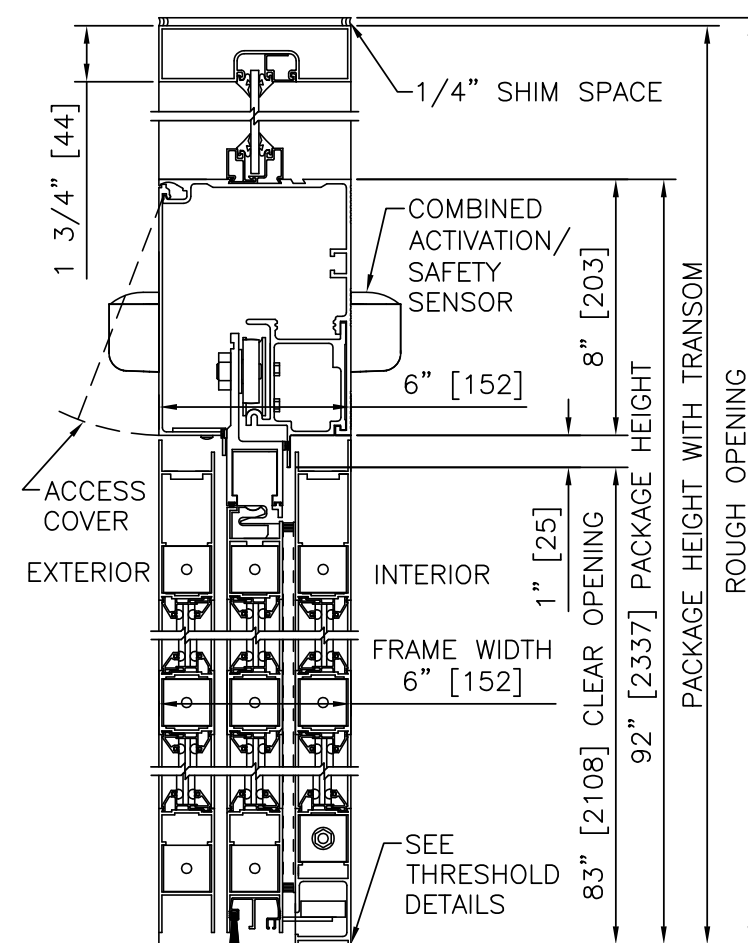
PLAN VIEW
SCALE: 3/8" = 1'-0"

NOTES

- ELECTRICAL REQUIREMENTS: 120 VAC, 5 AMP MIN TO POWER OPERATOR BY ELECTRICAL CONTRACTOR.
- ROUGH OPENING SHALL PROVIDE 1/4"[6] SHIM SPACE ON SIDES AND TOP OF PACKAGE.
- LIMITS OF ACTIVATION AND SAFETY ZONES ARE FOR REFERENCE ONLY; SEE ANSI/BHMA A156.10 FOR DETAILED REQUIREMENTS.
- STANDARD LOCKING IS 2-POINT, 3-POINT AND ACCESS CONTROL SYSTEMS AVAILABLE.
- STANDARD GLAZING STOPS FOR SLIDING AND FIXED PANELS ARE 1/4"[6]; 5/8"[16] AND 1"[25] AVAILABLE.
- STANDARD STILES, BOTTOM RAILS AND MUNTINS SHOWN; MEDIUM STILES, BOTTOM RAILS TO 12"[305], AND 4 1/4"[108] MUNTINS AVAILABLE.
- SEE SPECIFICATIONS FOR ADDITIONAL INFORMATION.



② HORIZONTAL SECTION
SCALE: 2" = 1'-0"



① VERTICAL SECTION
SCALE: 2" = 1'-0"

PRODUCT OPTIONS

- TRANSOM
 YES
 VERTICALS 1 2 3
- FINISH
 ANODIZED CLEAR CL2
 ANODIZED DK BRONZE
 CUSTOM
- LOCKING
 2-POINT
 ACCESS CONTROL (PANIC)
 3-POINT
- STILES
 NARROW
 MEDIUM
- BOTTOM RAILS
 STANDARD 4"
 OPTIONAL 6" 8" 10" 12"
- THRESHOLDS
 DBL BVL
 RECESSED
- ACTIVATION/SAFETY
 2 COMBINED ACTIVATION/SAFETY SENSORS
- OTHER OPTIONS
 ROTARY CTRL SWITCH
 KEYED
 UNINTERRUPTIBLE POWER SUPPLY
 FLY OPEN BOX
 WIND DAMPERS
 PANEL CLOSERS
 ALARM CONTACTS

BI-PART FORMULAS - NARROW STILE
PACKAGE WIDTH = 2 X CLEAR DOOR OPENING + 23.4"
CLEAR DOOR OPENING = 1/2 PACKAGE WIDTH - 11.7"
EMERGENCY BREAKOUT WIDTH = CLEAR DOOR OPENING + 7.3"
DOOR PANEL WIDTH = 1/4 PACKAGE WIDTH + 0.3"

BI-PART FORMULAS - MEDIUM STILE
PACKAGE WIDTH = 2 X CLEAR DOOR OPENING + 32.1"
CLEAR DOOR OPENING = 1/2 PACKAGE WIDTH - 16.0"
EMERGENCY BREAKOUT WIDTH = CLEAR DOOR OPENING + 10.3"
DOOR PANEL WIDTH = 1/4 PACKAGE WIDTH + 1.1"

| TYPICAL PACKAGE DIMENSIONS (NARROW STILE) | | | |
|---|----------------------------|--------------------------|-------------------------------|
| PACKAGE WIDTH | NOMINAL CLEAR DOOR OPENING | DOOR PANEL NOMINAL WIDTH | EMERGENCY BREAKOUT NOM. WIDTH |
| 120" | 48.3" | 30.3" | 55.6" |
| 144" | 60.3" | 36.3" | 67.6" |
| 168" | 72.3" | 42.3" | 79.6" |

BI-PART, EXTERIOR SIDELIGHT, WITH OPTIONAL TRANSOM

DURA-GLIDE
2000
SERIES

STANLEY
Access Technologies

**DURA-GLIDE
2000
SERIES**

BI-PARTING, EXTERIOR SIDELIGHT

PROJECT INFORMATION

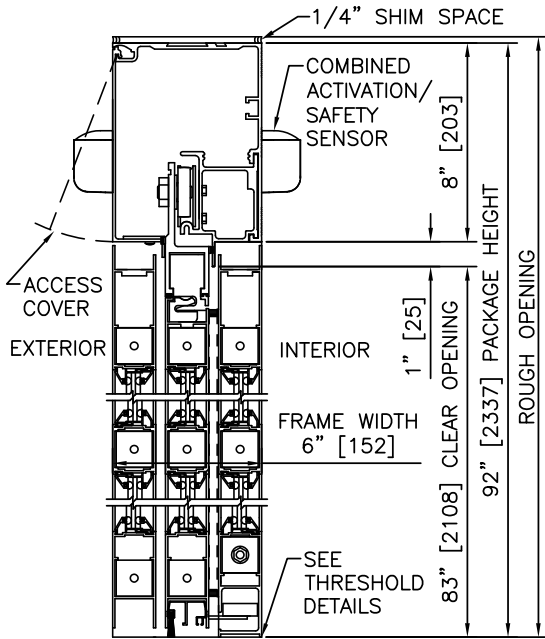
PROJECT NAME:

LOCATION:

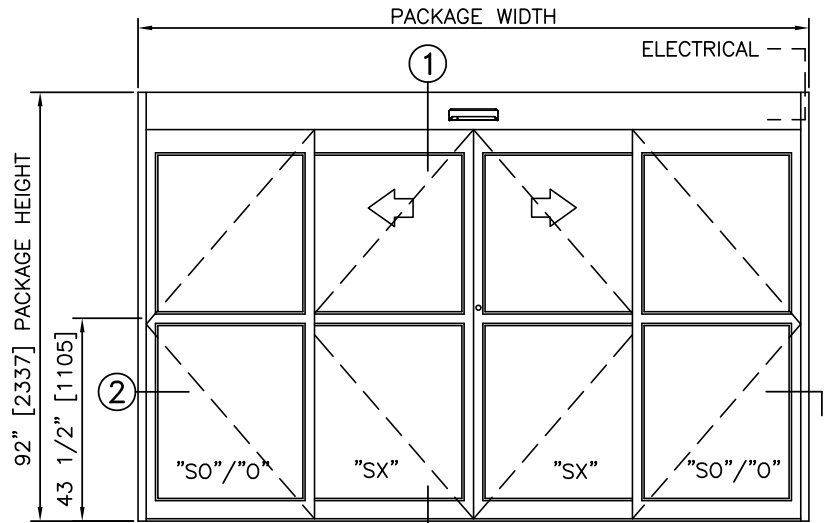
DOOR NUMBER(S):

DATE:

SHEET: OF



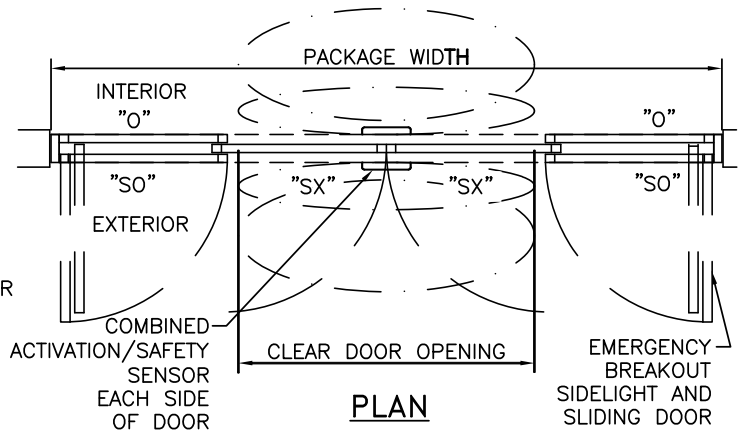
1 VERTICAL SECTION



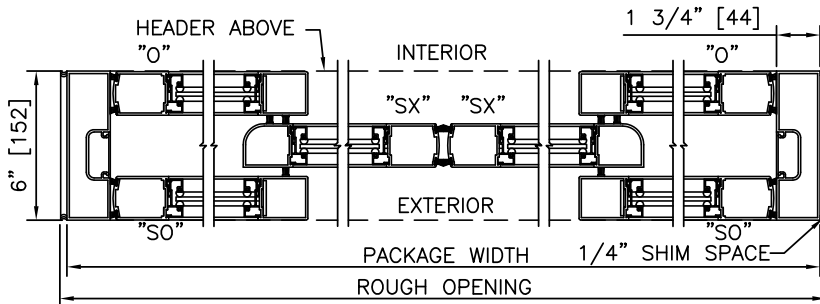
ELEVATION

NOTES

1. ELECTRICAL REQUIREMENTS: 120 VAC, 5 AMP MIN TO POWER OPERATOR BY ELECTRICAL CONTRACTOR.
2. ROUGH OPENING SHALL PROVIDE 1/4"[6] SHIM SPACE ON SIDES AND TOP OF PACKAGE.
3. LIMITS OF ACTIVATION AND SAFETY ZONES ARE FOR REFERENCE ONLY; SEE ANSI/BHMA A156.10 FOR DETAILED REQUIREMENTS.
4. SEE SPECIFICATIONS FOR ADDITIONAL INFORMATION.



PLAN



2 HORIZONTAL SECTION

TYPICAL PACKAGE DIMENSIONS (NARROW STILE)

| PACKAGE WIDTH | NOMINAL CLEAR DOOR OPENING | DOOR PANEL NOMINAL WIDTH | EMERGENCY BREAKOUT NOM. WIDTH |
|---------------|----------------------------|--------------------------|-------------------------------|
| 120" | 48.3" | 30.3" | 55.6" |
| 144" | 60.3" | 36.3" | 67.6" |
| 168" | 72.3" | 42.3" | 79.6" |

**DURA-GLIDE
2000
SERIES**

BI-PARTING, EXTERIOR SIDELIGHT, WITH TRANSOM

PROJECT INFORMATION

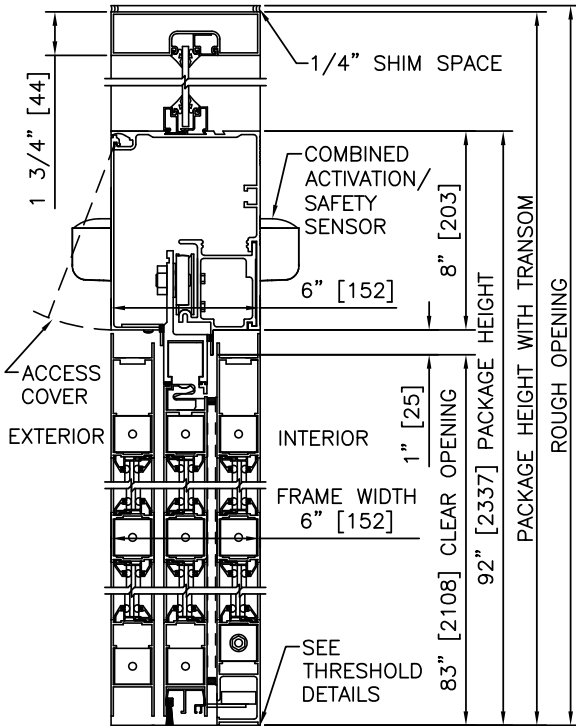
PROJECT NAME:

LOCATION:

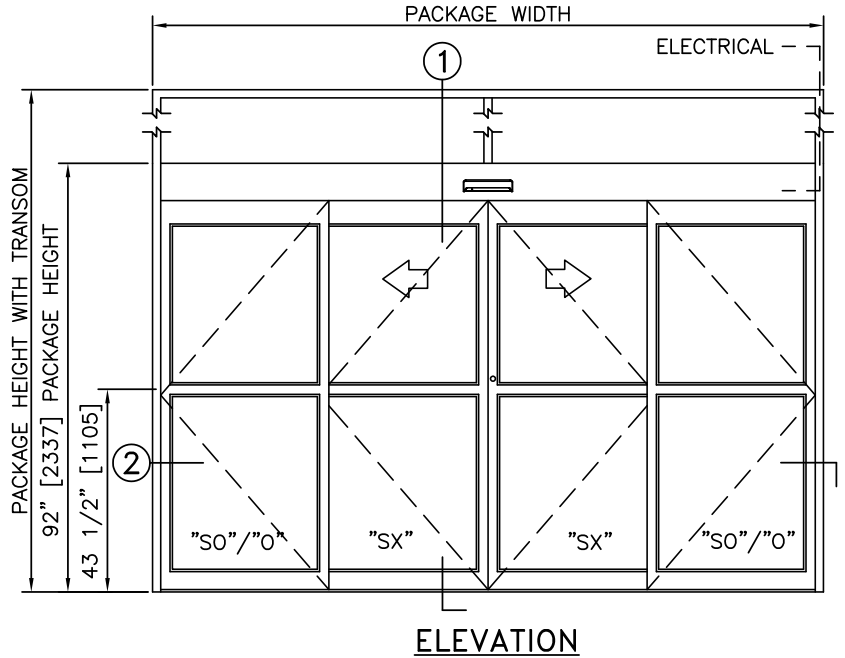
DOOR NUMBER(S):

DATE:

SHEET: OF



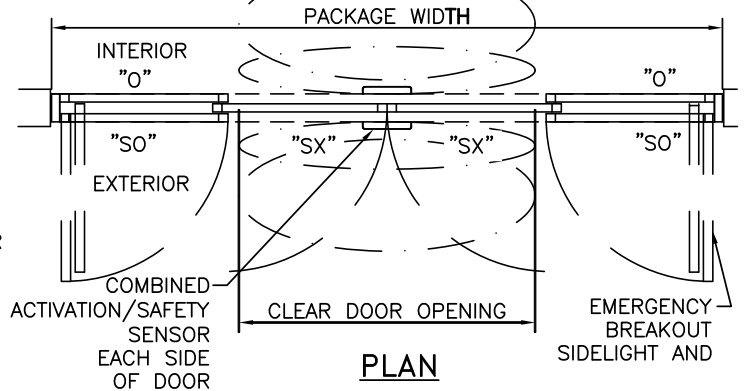
1 VERTICAL SECTION



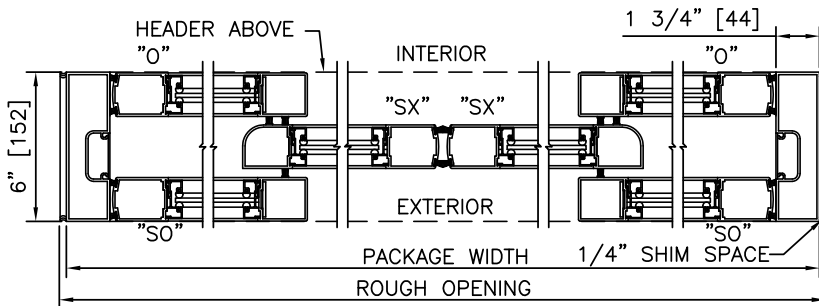
ELEVATION

NOTES

1. ELECTRICAL REQUIREMENTS: 120 VAC, 5 AMP MIN TO POWER OPERATOR BY ELECTRICAL CONTRACTOR.
2. ROUGH OPENING SHALL PROVIDE 1/4\"[6] SHIM SPACE ON SIDES AND TOP OF PACKAGE.
3. LIMITS OF ACTIVATION AND SAFETY ZONES ARE FOR REFERENCE ONLY; SEE ANSI/BHMA A156.10 FOR DETAILED REQUIREMENTS.
4. SEE SPECIFICATIONS FOR ADDITIONAL INFORMATION.



PLAN



2 HORIZONTAL SECTION

TYPICAL PACKAGE DIMENSIONS (NARROW STILE)

| PACKAGE WIDTH | NOMINAL CLEAR DOOR OPENING | DOOR PANEL NOMINAL WIDTH | EMERGENCY BREAKOUT NOM. WIDTH |
|---------------|----------------------------|--------------------------|-------------------------------|
| 120" | 48.3" | 30.3" | 55.6" |
| 144" | 60.3" | 36.3" | 67.6" |
| 168" | 72.3" | 42.3" | 79.6" |

**DURA-GLIDE
2000
SERIES**

BI-PARTING, EXTERIOR SIDELIGHT, WITH ACCESS CONTROL, RECESSED

PROJECT INFORMATION

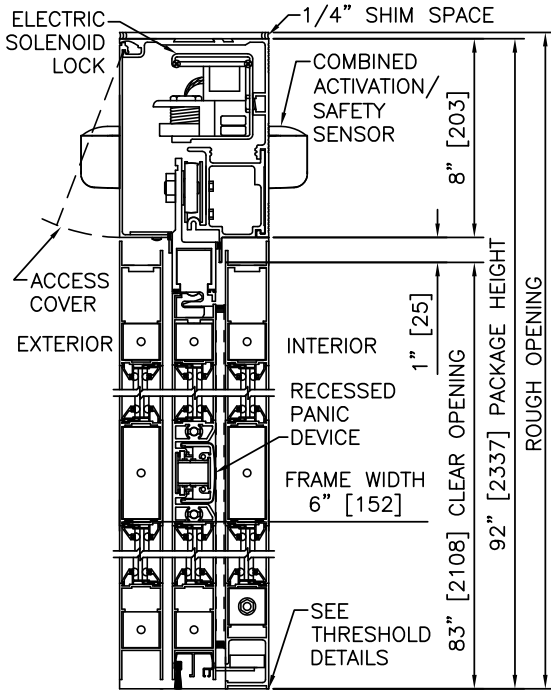
PROJECT NAME:

LOCATION:

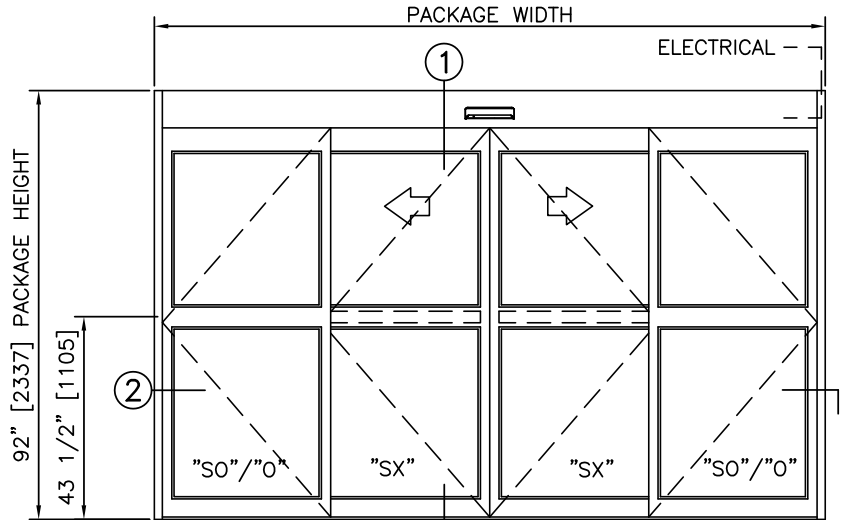
DOOR NUMBER(S):

DATE:

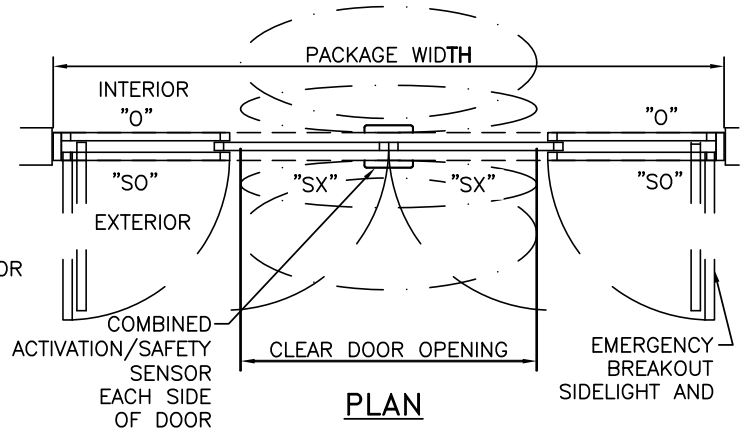
SHEET: OF



1 VERTICAL SECTION



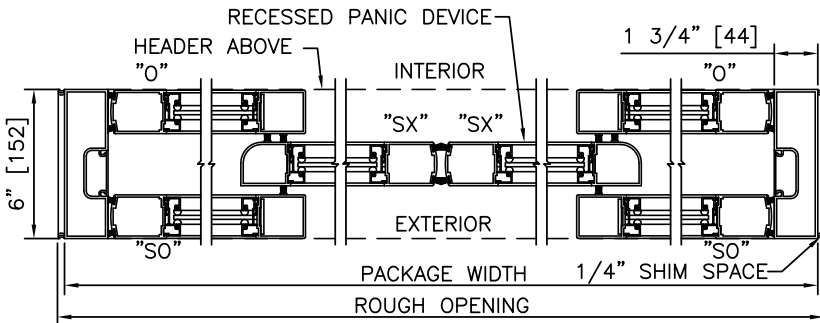
ELEVATION



PLAN

NOTES

1. ELECTRICAL REQUIREMENTS: BY ELECTRICAL CONTRACTOR
 - 1.1. 120 VAC, 5 AMP MIN TO POWER OPERATOR
 - 1.2. CONTROL CIRCUIT FROM SECURE ACTIVATION TO OPERATOR
2. ROUGH OPENING SHALL PROVIDE 1/4" [6] SHIM SPACE ON SIDES AND TOP OF PACKAGE.
3. LIMITS OF ACTIVATION AND SAFETY ZONES ARE FOR REFERENCE ONLY; SEE ANSI/BHMA A156.10 FOR DETAILED REQUIREMENTS.
4. SEE SPECIFICATIONS FOR ADDITIONAL INFORMATION.



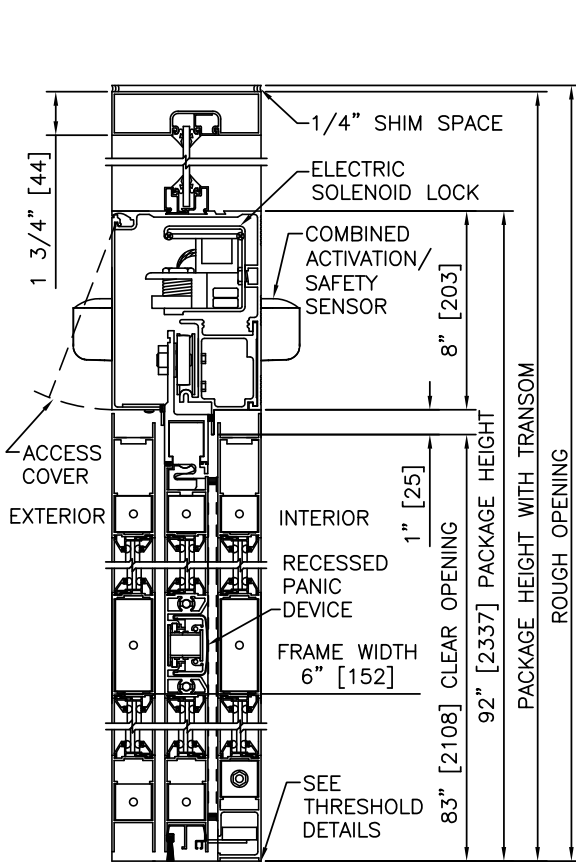
2 HORIZONTAL SECTION

TYPICAL PACKAGE DIMENSIONS (NARROW STILE)

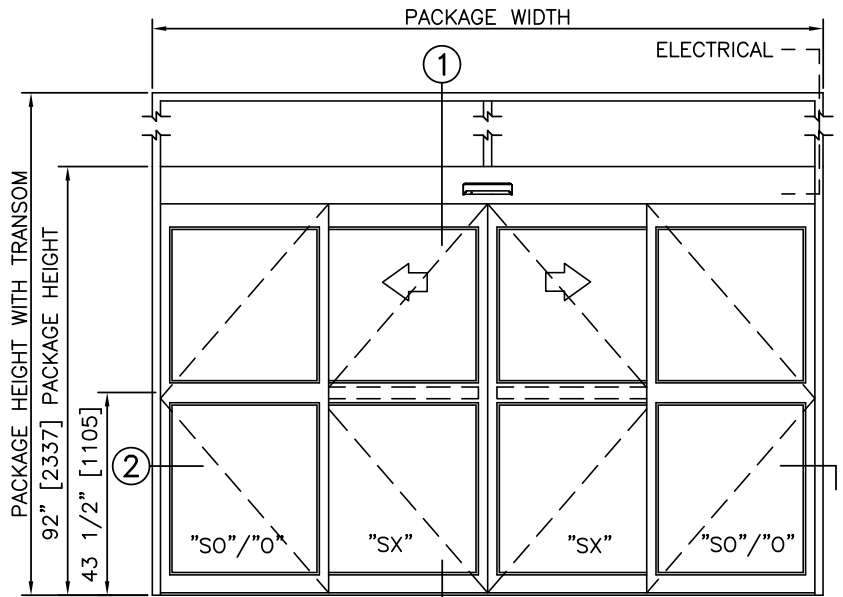
| PACKAGE WIDTH | NOMINAL CLEAR DOOR OPENING | DOOR PANEL NOMINAL WIDTH | EMERGENCY BREAKOUT NOM. WIDTH |
|---------------|----------------------------|--------------------------|-------------------------------|
| 120" | 48.3" | 30.3" | 55.6" |
| 144" | 60.3" | 36.3" | 67.6" |
| 168" | 72.3" | 42.3" | 79.6" |

**DURA-GLIDE
2000
SERIES**

| | |
|--|-----------|
| BI-PARTING, EXTERIOR SIDELIGHTS, WITH TRANSOM & ACCESS CONTROL, RECESSED | |
| PROJECT INFORMATION | |
| PROJECT NAME: | |
| LOCATION: | |
| DOOR NUMBER(S): | |
| DATE: | SHEET: OF |

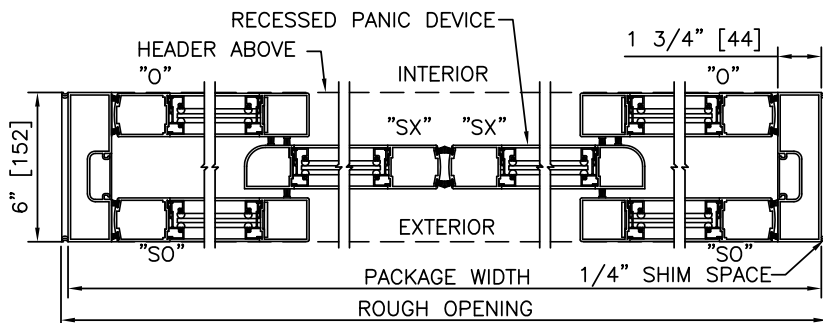
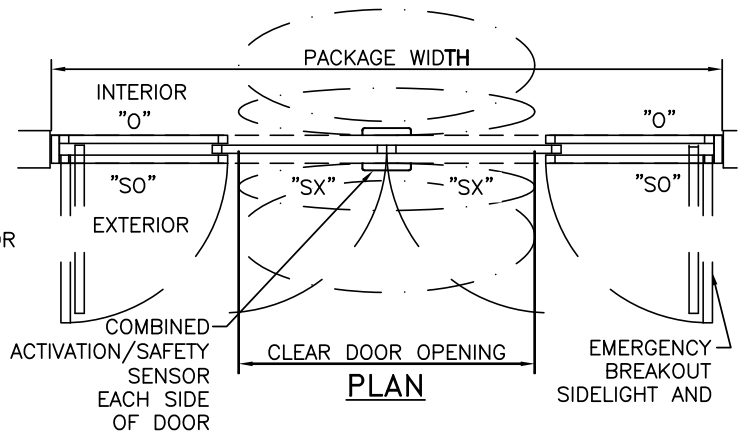


1 VERTICAL SECTION



NOTES

- ELECTRICAL REQUIREMENTS: BY ELECTRICAL CONTRACTOR
 - 120 VAC, 5 AMP MIN TO POWER OPERATOR
 - CONTROL CIRCUIT FROM SECURE ACTIVATION TO OPERATOR
- ROUGH OPENING SHALL PROVIDE 1/4"[6] SHIM SPACE ON SIDES AND TOP OF PACKAGE.
- LIMITS OF ACTIVATION AND SAFETY ZONES ARE FOR REFERENCE ONLY; SEE ANSI/BHMA A156.10 FOR DETAILED REQUIREMENTS.
- SEE SPECIFICATIONS FOR ADDITIONAL INFORMATION.



2 HORIZONTAL SECTION

TYPICAL PACKAGE DIMENSIONS (NARROW STILE)

| PACKAGE WIDTH | NOMINAL CLEAR DOOR OPENING | DOOR PANEL NOMINAL WIDTH | EMERGENCY BREAKOUT NOM. WIDTH |
|---------------|----------------------------|--------------------------|-------------------------------|
| 120" | 48.3" | 30.3" | 55.6" |
| 144" | 60.3" | 36.3" | 67.6" |
| 168" | 72.3" | 42.3" | 79.6" |