

SLIDING AUTOMATIC ENTRANCES: DURA-GLIDE™ 5300 SERIES, 3-P TELESCOPIC

1.08 - 3-PANEL TELESCOPIC WITH OPTIONAL TRANSOM

- 1.08.01 3-PANEL TELESCOPIC RIGHT HAND
- 1.08.02 3-PANEL TELESCOPIC LEFT HAND
- 1.08.03 3-PANEL TELESCOPIC RIGHT HAND WITH TRANSOM
- 1.08.04 3-PANEL TELESCOPIC LEFT HAND WITH TRANSOM
- 1.08.05 3-PANEL TELESCOPIC RIGHT HAND WITH ACCESS CONTROL, SURFACE
- 1.08.06 3-PANEL TELESCOPIC LEFT HAND WITH ACCESS CONTROL, SURFACE
- 1.08.07 3-PANEL TELESCOPIC RIGHT HAND W/ TRANSOM & ACCESS CTRL, SURF
- 1.08.08 3-PANEL TELESCOPIC LEFT HAND W/ TRANSOM & ACCESS CTRL, SURF
- 1.08.09 3-PANEL TELESCOPIC RIGHT HAND WITH ACCESS CONTROL, RECESSED
- 1.08.10 3-PANEL TELESCOPIC LEFT HAND WITH ACCESS CONTROL, RECESSED
- 1.08.11 3-PANEL TELESCOPIC RIGHT HAND W/ TRANSOM & ACCESS CTRL, REC
- 1.08.12 3-PANEL TELESCOPIC LEFT HAND W/ TRANSOM & ACCESS CTRL, REC

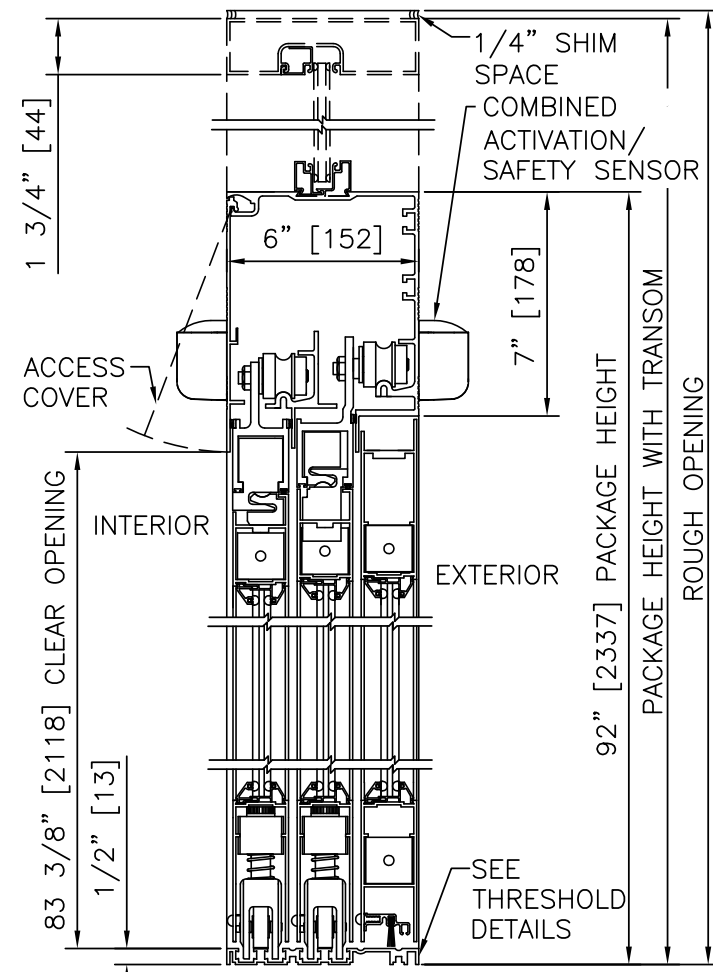
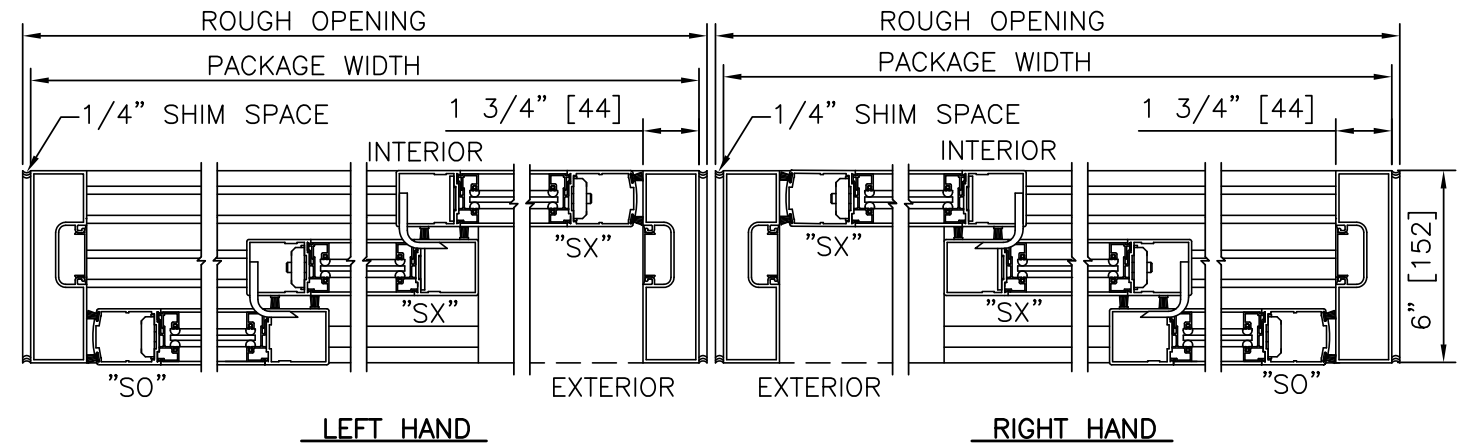
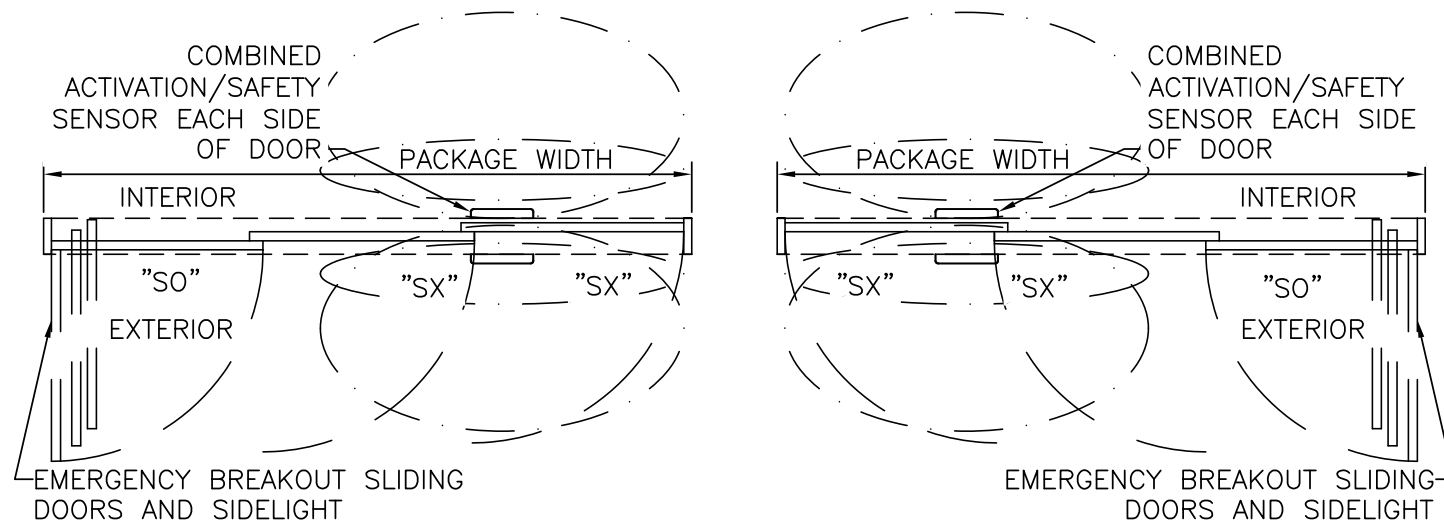
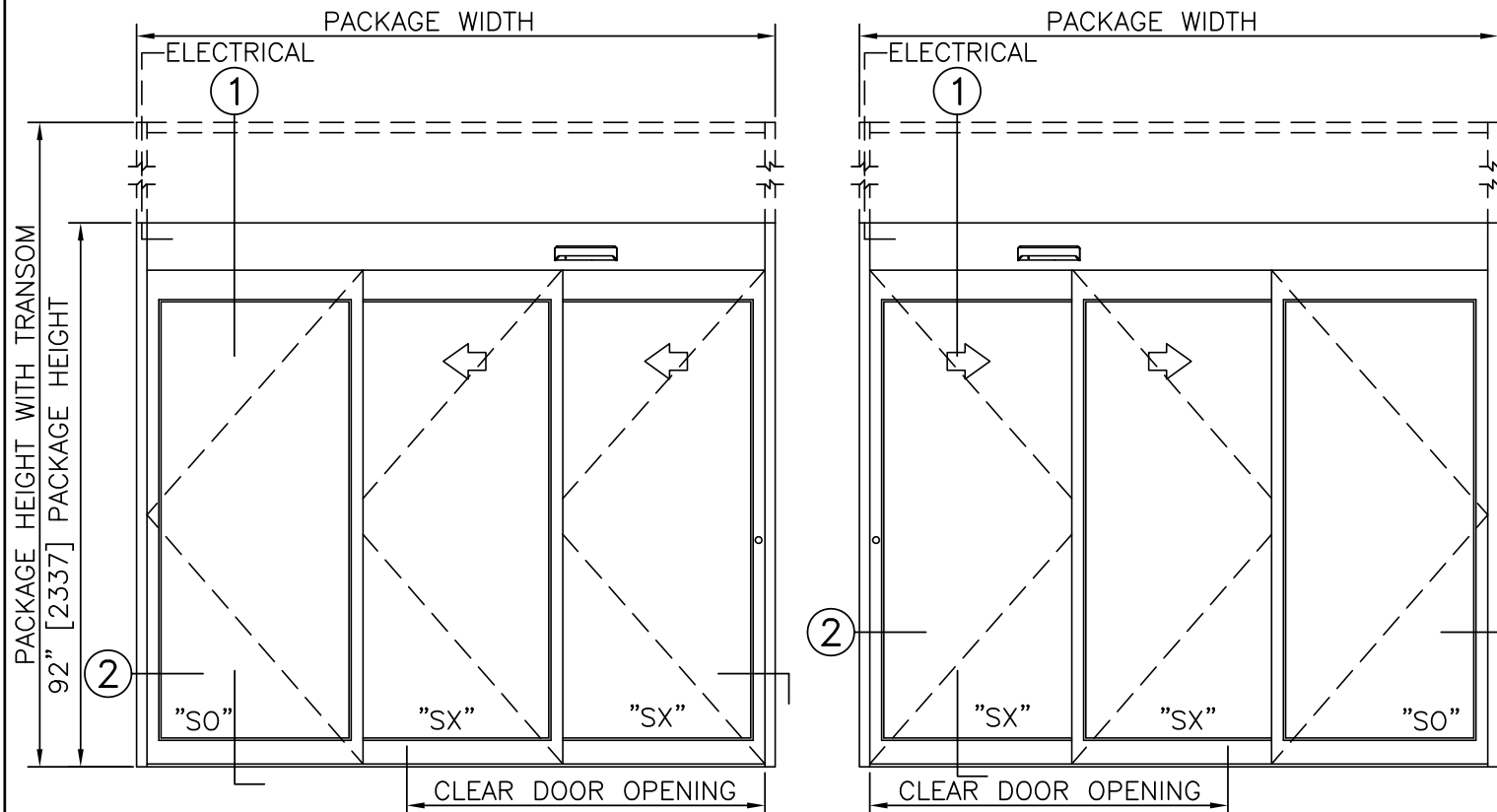
STANLEY
Access Technologies

DURA-GLIDE 5300 SERIES

3 PANEL TELESCOPIC WITH OPTIONAL TRANSOM

PROJECT INFORMATION

PROJECT NAME:	
LOCATION:	
DOOR NUMBER(S):	
DATE:	SHEET: OF



- PRODUCT OPTIONS**
- TRANSOM
 - YES
 - VERTICALS 1 2 3
 - FINISH
 - ANODIZED CLEAR CL2
 - ANODIZED DK BRONZE
 - CUSTOM
 - LOCKING
 - 1-POINT
 - ACCESS CONTROL (PANIC)
 - 2-POINT
 - 3-POINT
 - STILES
 - NARROW
 - MEDIUM
 - BOTTOM RAILS
 - STANDARD 4"
 - OPTIONAL 6" 8" 10" 12"
 - THRESHOLDS
 - DBL BVL
 - RECESSED
 - ACTIVATION/SAFETY
 - 2 SU-100/STANGUARD
 - 2 COMBINED ACTIVATION/SAFETY SENSORS
 - OTHER OPTIONS
 - ROTARY CTRL SWITCH
 - UNINTERRUPTIBLE POWER SUPPLY
 - FLY OPEN BOX
 - ALARM CONTACTS
 - CLEAN ROOM (CL 10)
 - KEYED

3-PANEL TELESCOPIC FORMULAS - NARROW STILE
 PACKAGE WIDTH = 3/2 CLEAR DOOR OPENING + 17.2"
 CLEAR DOOR OPENING = 2/3 PACKAGE WIDTH - 11.4"
 EMERGENCY BREAKOUT WIDTH = PACKAGE WIDTH - 9.3"
 DOOR PANEL WIDTH (SX, SO) = 1/3 PACKAGE WIDTH + 0.5"
 DOOR PANEL WIDTH (SX) = 1/3 PACKAGE WIDTH + 0.4"

3-PANEL TELESCOPIC FORMULAS - MEDIUM STILE
 PACKAGE WIDTH = 3/2 CLEAR DOOR OPENING + 23.1"
 CLEAR DOOR OPENING = 2/3 PACKAGE WIDTH - 15.4"
 EMERGENCY BREAKOUT WIDTH = PACKAGE WIDTH - 9.3"
 DOOR PANEL WIDTH (ALL) = 1/3 PACKAGE WIDTH + 1.5"

TYPICAL PACKAGE DIMENSIONS (NARROW STILE)			
PACKAGE WIDTH	NOMINAL CLEAR DOOR OPENING	SLIDING DOOR PANEL NOMINAL WIDTH	EMERGENCY BREAKOUT NOM. WIDTH
84"	44.6"	28.4"	74.8"
96"	52.6"	32.4"	86.8"
108"	60.6"	36.4"	98.8"

3-PANEL TELESCOPIC WITH OPTIONAL TRANSOM

DURA-GLIDE 5300 SERIES

STANLEY
Access Technologies

- NOTES**
- ELECTRICAL REQUIREMENTS: 120 VAC, 5 AMP MIN TO POWER OPERATOR BY ELECTRICAL CONTRACTOR.
 - ROUGH OPENING SHALL PROVIDE 1/4"[6] SHIM SPACE ON SIDES AND TOP OF PACKAGE.
 - LIMITS OF ACTIVATION AND SAFETY ZONES ARE FOR REFERENCE ONLY; SEE ANSI/BHMA A156.10 FOR DETAILED REQUIREMENTS.
 - STANDARD LOCKING IS 1-POINT; 2-POINT, 3-POINT, AND ACCESS CONTROL SYSTEMS AVAILABLE. SEE SHEET 1.61.
 - STANDARD GLAZING STOPS FOR ALL PANELS ARE 1/4"[6]; 5/8"[16] AND 1"[25] AVAILABLE FOR LEAD SLIDING PANEL, 5/8"[16] AVAILABLE FOR INTERMEDIATE SLIDING PANEL AND STATIONARY PANEL.
 - STANDARD STILES AND BOTTOM RAILS SHOWN; MEDIUM STILES, BOTTOM RAILS TO 12"[305], AND MUNTINS AVAILABLE.
 - SEE SPECIFICATIONS FOR ADDITIONAL INFORMATION.

**DURA-GLIDE
5300
SERIES**

3-PANEL TELESCOPIC RIGHT HAND

PROJECT INFORMATION

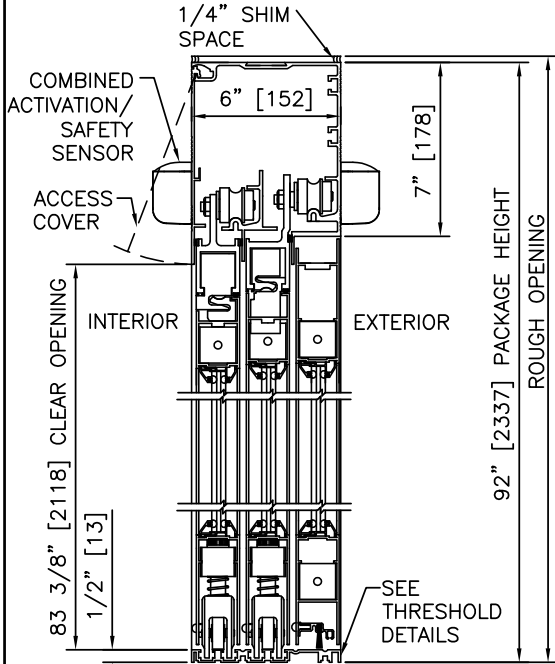
PROJECT NAME:

LOCATION:

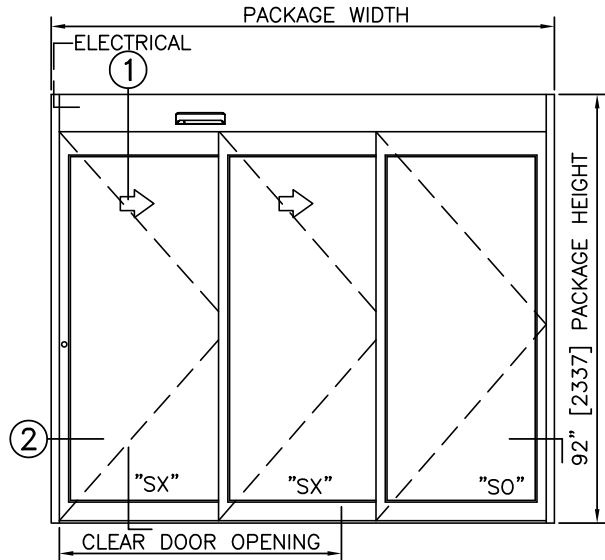
DOOR NUMBER(S):

DATE:

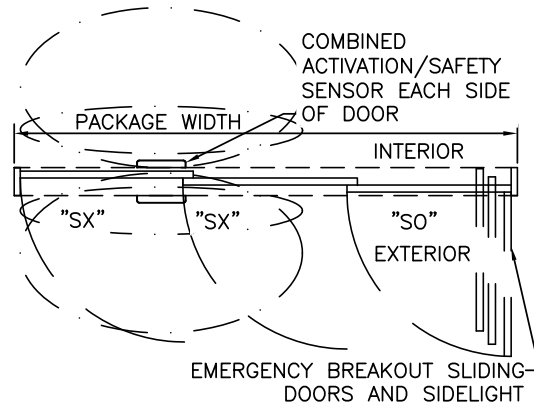
SHEET: OF



① VERTICAL SECTION



ELEVATION

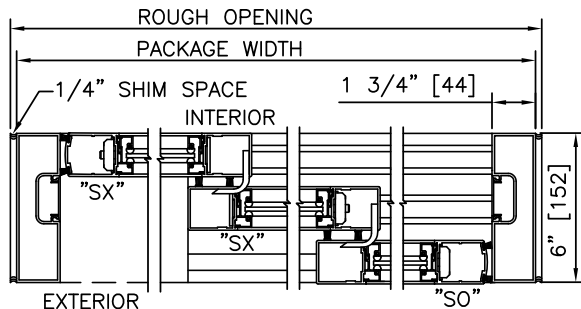


EMERGENCY BREAKOUT SLIDING DOORS AND SIDELIGHT

PLAN

NOTES

1. ELECTRICAL REQUIREMENTS: 120 VAC, 5 AMP MIN TO POWER OPERATOR BY ELECTRICAL CONTRACTOR.
2. ROUGH OPENING SHALL PROVIDE 1/4" [6] SHIM SPACE ON SIDES AND TOP OF PACKAGE.
3. LIMITS OF ACTIVATION AND SAFETY ZONES ARE FOR REFERENCE ONLY; SEE ANSI/BHMA A156.10 FOR DETAILED REQUIREMENTS.
4. SEE SPECIFICATIONS FOR ADDITIONAL INFORMATION.



② HORIZONTAL SECTION

TYPICAL PACKAGE DIMENSIONS (NARROW STILE)

PACKAGE WIDTH	NOMINAL CLEAR DOOR OPENING	SLIDING DOOR PANEL NOMINAL WIDTH	EMERGENCY BREAKOUT NOM. WIDTH
84"	44.6"	28.4"	74.8"
96"	52.6"	32.4"	86.8"
108"	60.6"	36.4"	98.8"

**DURA-GLIDE
5300
SERIES**

3-PANEL TELESCOPIC LEFT HAND

PROJECT INFORMATION

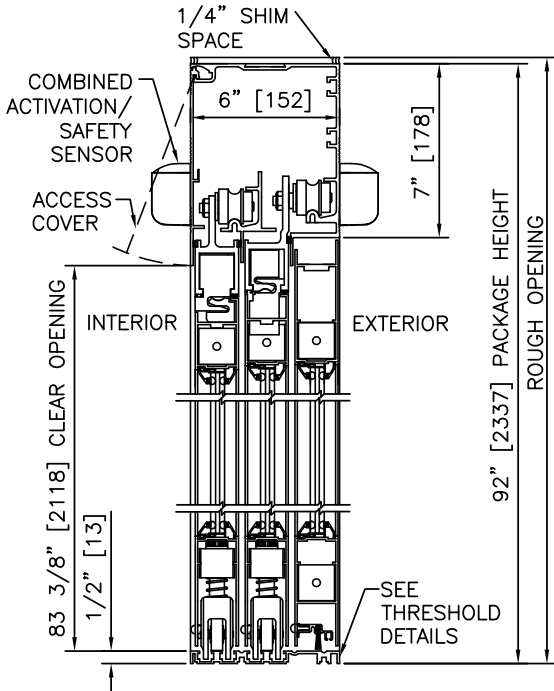
PROJECT NAME:

LOCATION:

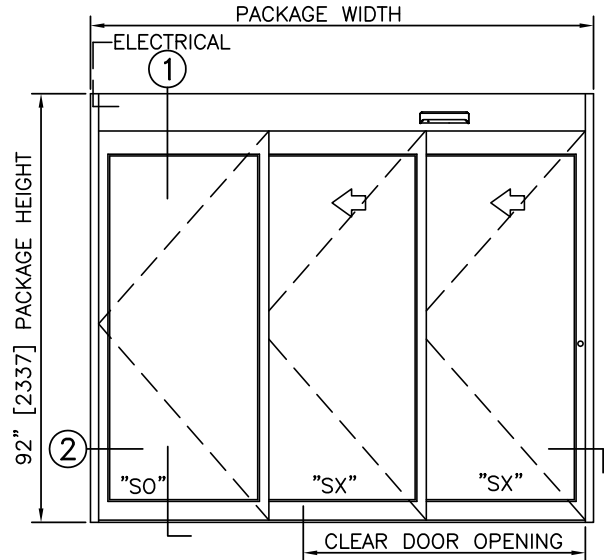
DOOR NUMBER(S):

DATE:

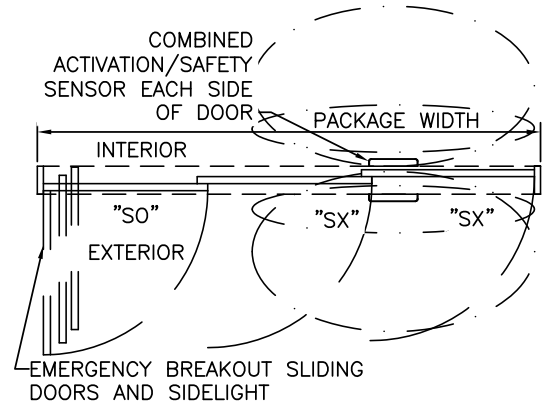
SHEET: OF



① VERTICAL SECTION



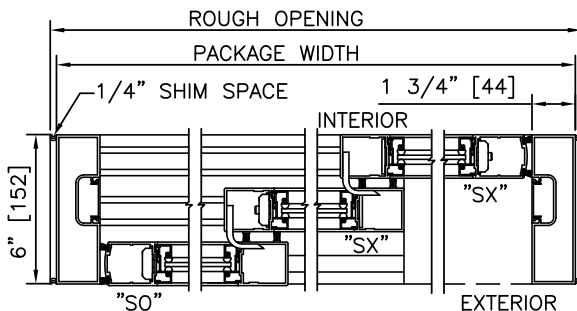
ELEVATION



PLAN

NOTES

1. ELECTRICAL REQUIREMENTS: 120 VAC, 5 AMP MIN TO POWER OPERATOR BY ELECTRICAL CONTRACTOR.
2. ROUGH OPENING SHALL PROVIDE 1/4" [6] SHIM SPACE ON SIDES AND TOP OF PACKAGE.
3. LIMITS OF ACTIVATION AND SAFETY ZONES ARE FOR REFERENCE ONLY; SEE ANSI/BHMA A156.10 FOR DETAILED REQUIREMENTS.
4. SEE SPECIFICATIONS FOR ADDITIONAL INFORMATION.



② HORIZONTAL SECTION

TYPICAL PACKAGE DIMENSIONS (NARROW STILE)

PACKAGE WIDTH	NOMINAL CLEAR DOOR OPENING	SLIDING DOOR PANEL NOMINAL WIDTH	EMERGENCY BREAKOUT NOM. WIDTH
84"	44.6"	28.4"	74.8"
96"	52.6"	32.4"	86.8"
108"	60.6"	36.4"	98.8"

**DURA-GLIDE
5300
SERIES**

3-PANEL TELESCOPIC RIGHT HAND WITH TRANSOM

PROJECT INFORMATION

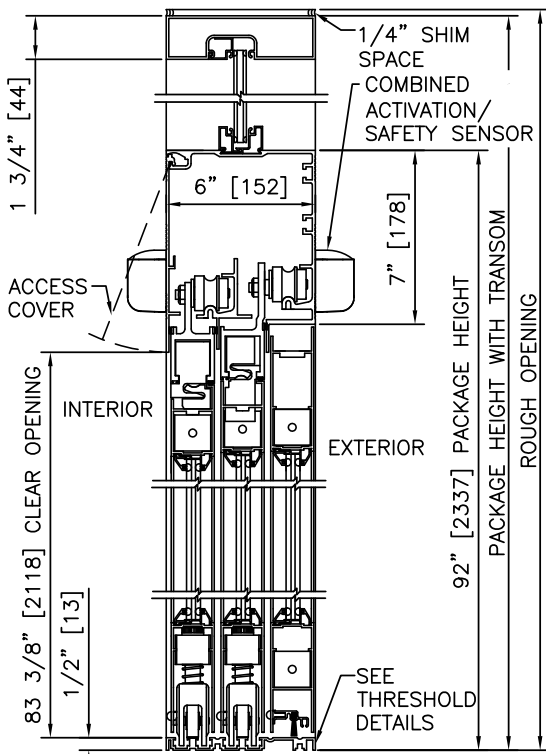
PROJECT NAME:

LOCATION:

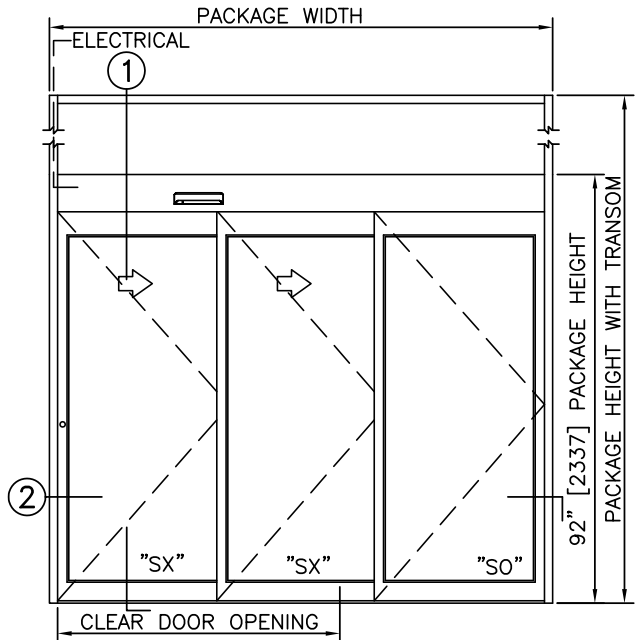
DOOR NUMBER(S):

DATE:

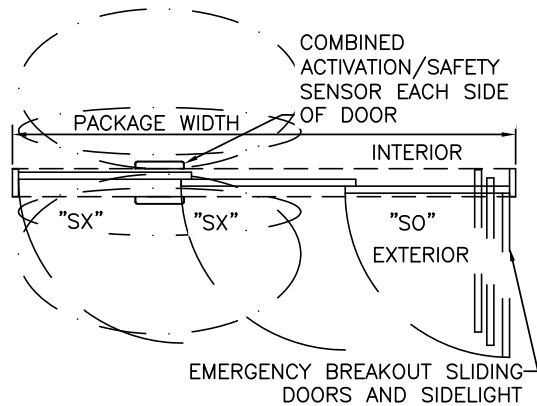
SHEET: OF



① VERTICAL SECTION



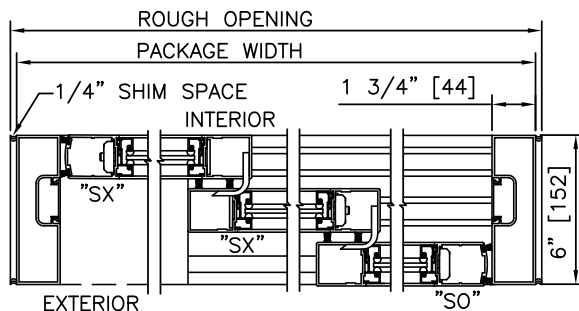
ELEVATION



PLAN

NOTES

1. ELECTRICAL REQUIREMENTS: 120 VAC, 5 AMP MIN TO POWER OPERATOR BY ELECTRICAL CONTRACTOR.
2. ROUGH OPENING SHALL PROVIDE 1/4" [6] SHIM SPACE ON SIDES AND TOP OF PACKAGE.
3. LIMITS OF ACTIVATION AND SAFETY ZONES ARE FOR REFERENCE ONLY; SEE ANSI/BHMA A156.10 FOR DETAILED REQUIREMENTS.
4. SEE SPECIFICATIONS FOR ADDITIONAL INFORMATION.



② HORIZONTAL SECTION

TYPICAL PACKAGE DIMENSIONS (NARROW STILE)

PACKAGE WIDTH	NOMINAL CLEAR DOOR OPENING	SLIDING DOOR PANEL NOMINAL WIDTH	EMERGENCY BREAKOUT NOM. WIDTH
84"	44.6"	28.4"	74.8"
96"	52.6"	32.4"	86.8"
108"	60.6"	36.4"	98.8"

**DURA-GLIDE
5300
SERIES**

3-PANEL TELESCOPIC LEFT HAND WITH TRANSOM

PROJECT INFORMATION

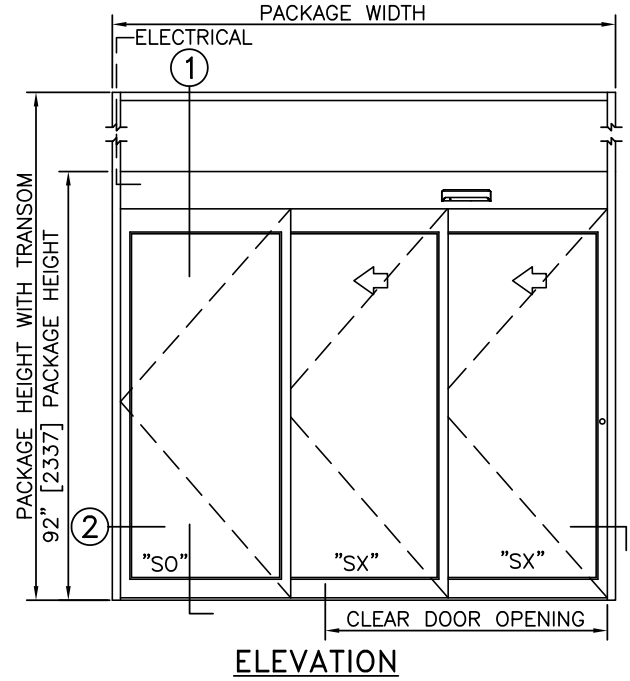
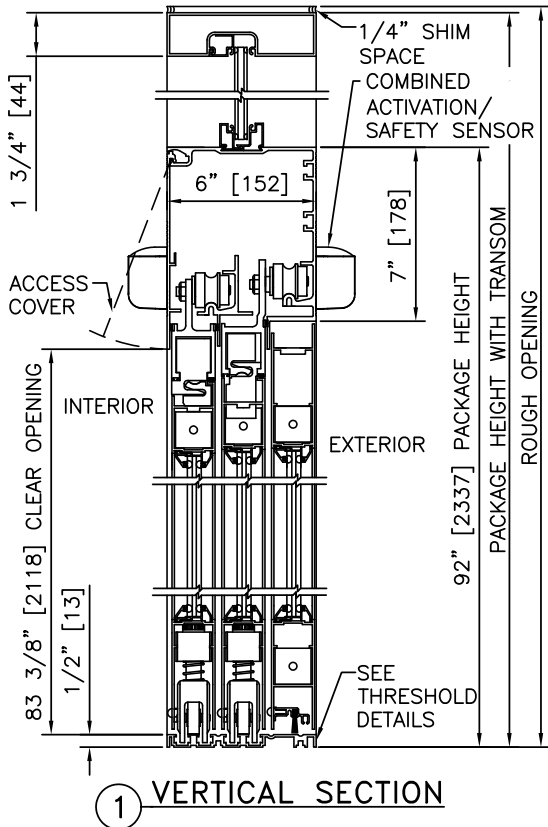
PROJECT NAME:

LOCATION:

DOOR NUMBER(S):

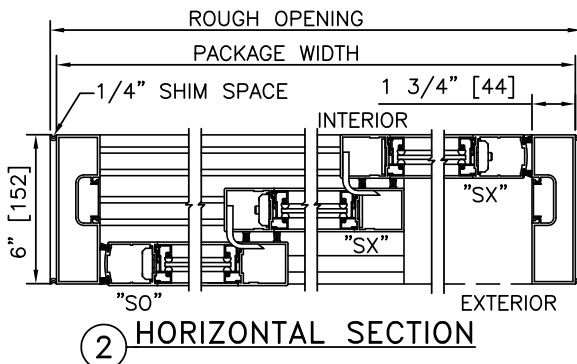
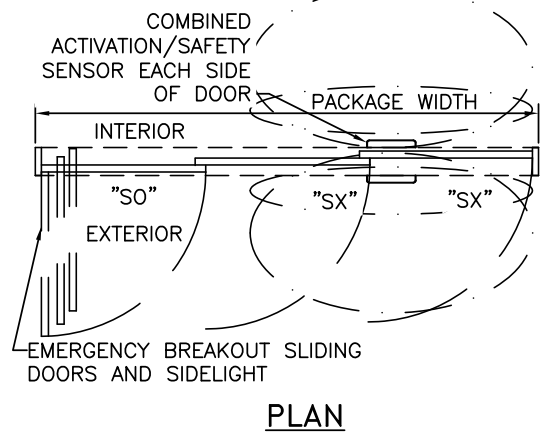
DATE:

SHEET: OF



NOTES

1. ELECTRICAL REQUIREMENTS: 120 VAC, 5 AMP MIN TO POWER OPERATOR BY ELECTRICAL CONTRACTOR.
2. ROUGH OPENING SHALL PROVIDE 1/4"[6] SHIM SPACE ON SIDES AND TOP OF PACKAGE.
3. LIMITS OF ACTIVATION AND SAFETY ZONES ARE FOR REFERENCE ONLY; SEE ANSI/BHMA A156.10 FOR DETAILED REQUIREMENTS.
4. SEE SPECIFICATIONS FOR ADDITIONAL INFORMATION.



TYPICAL PACKAGE DIMENSIONS (NARROW STILE)			
PACKAGE WIDTH	NOMINAL CLEAR DOOR OPENING	SLIDING DOOR PANEL NOMINAL WIDTH	EMERGENCY BREAKOUT NOM. WIDTH
84"	44.6"	28.4"	74.8"
96"	52.6"	32.4"	86.8"
108"	60.6"	36.4"	98.8"

**DURA-GLIDE
5300
SERIES**

3-PANEL TELESCOPIC RIGHT HAND WITH ACCESS CONTROL, SURFACE

PROJECT INFORMATION

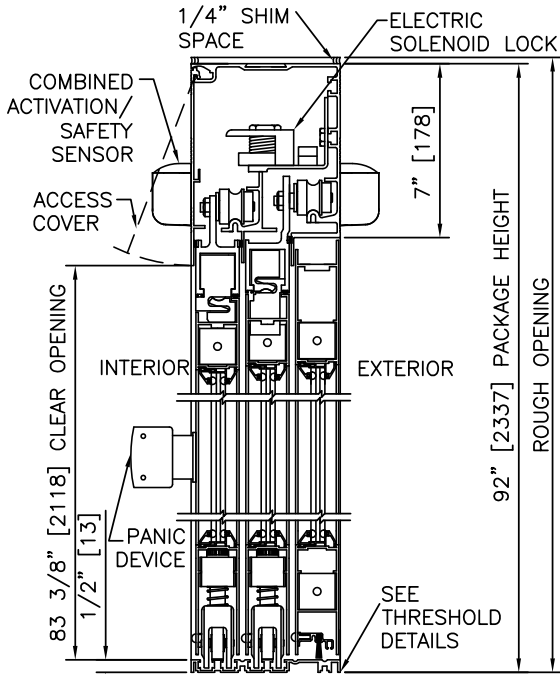
PROJECT NAME:

LOCATION:

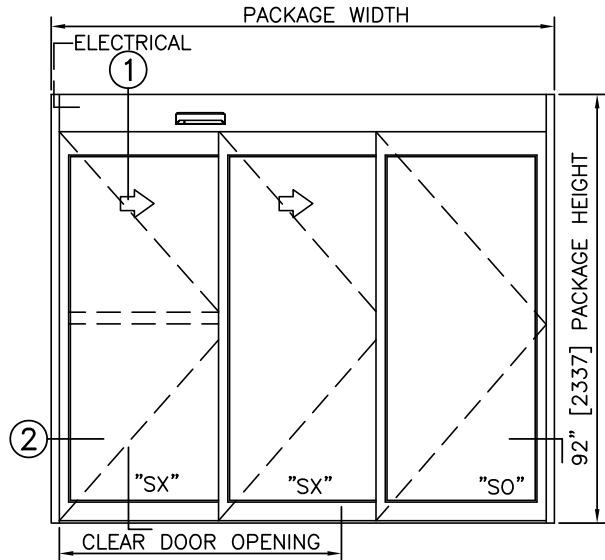
DOOR NUMBER(S):

DATE:

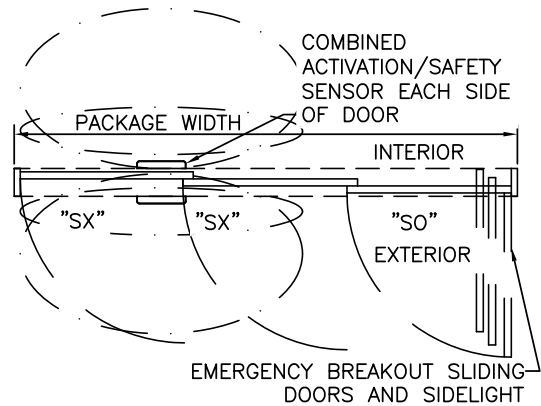
SHEET: OF



① VERTICAL SECTION



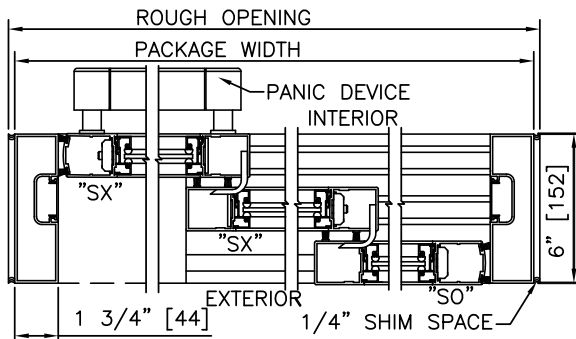
ELEVATION



PLAN

NOTES

1. ELECTRICAL REQUIREMENTS: BY ELECTRICAL CONTRACTOR
120 VAC, 5 AMP MIN TO POWER OPERATOR
CONTROL CIRCUIT FROM SECURE ACTIVATION TO OPERATOR
2. ROUGH OPENING SHALL PROVIDE 1/4" [6] SHIM SPACE ON SIDES AND TOP OF PACKAGE.
3. LIMITS OF ACTIVATION AND SAFETY ZONES ARE FOR REFERENCE ONLY; SEE ANSI/BHMA A156.10 FOR DETAILED REQUIREMENTS.
4. SEE SPECIFICATIONS FOR ADDITIONAL INFORMATION.



② HORIZONTAL SECTION

TYPICAL PACKAGE DIMENSIONS (NARROW STILE)

PACKAGE WIDTH	NOMINAL CLEAR DOOR OPENING	SLIDING DOOR PANEL NOMINAL WIDTH	EMERGENCY BREAKOUT NOM. WIDTH
84"	44.6"	28.4"	74.8"
96"	52.6"	32.4"	86.8"
108"	60.6"	36.4"	98.8"

**DURA-GLIDE
5300
SERIES**

3-PANEL TELESCOPIC LEFT HAND WITH ACCESS CONTROL, SURFACE

PROJECT INFORMATION

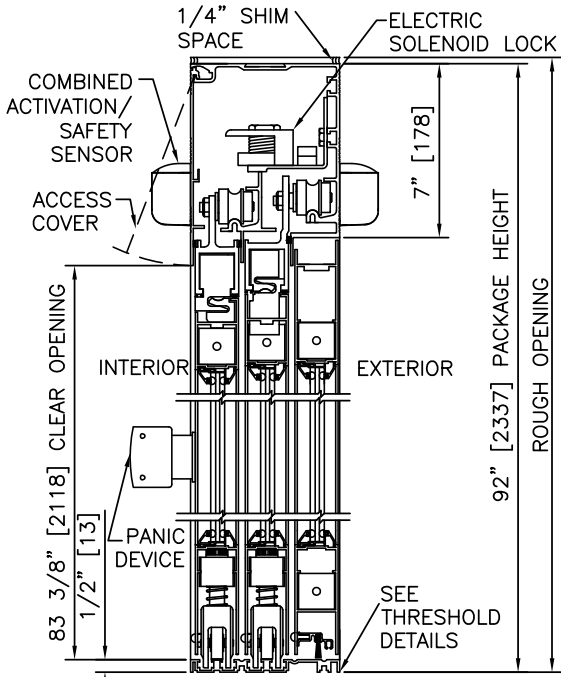
PROJECT NAME:

LOCATION:

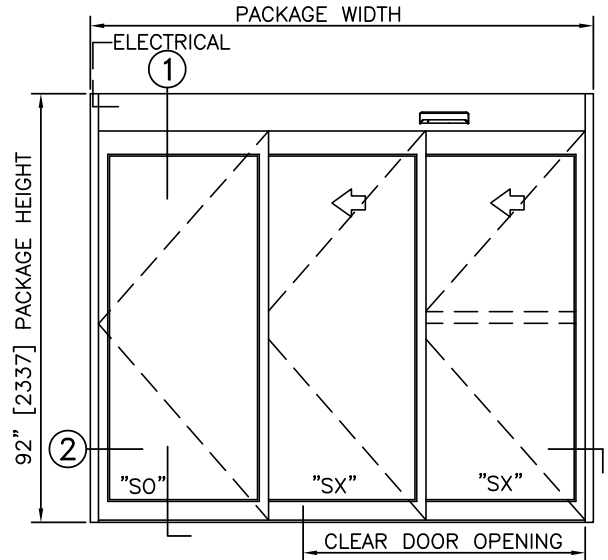
DOOR NUMBER(S):

DATE:

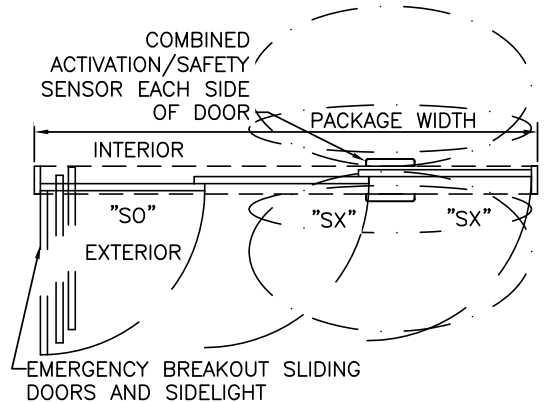
SHEET: OF



① VERTICAL SECTION



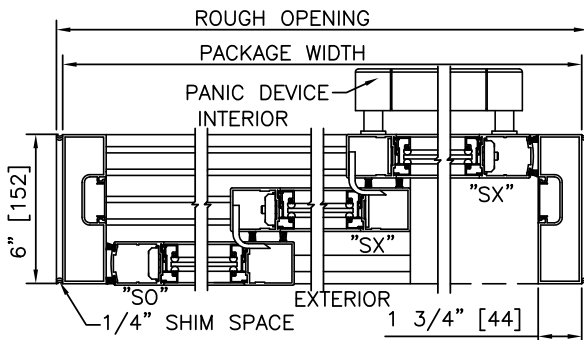
ELEVATION



PLAN

NOTES

1. ELECTRICAL REQUIREMENTS: BY ELECTRICAL CONTRACTOR
120 VAC, 5 AMP MIN TO POWER OPERATOR
CONTROL CIRCUIT FROM SECURE ACTIVATION TO OPERATOR
2. ROUGH OPENING SHALL PROVIDE 1/4"[6] SHIM SPACE ON
SIDES AND TOP OF PACKAGE.
3. LIMITS OF ACTIVATION AND SAFETY ZONES ARE FOR
REFERENCE ONLY; SEE ANSI/BHMA A156.10 FOR DETAILED
REQUIREMENTS.
4. SEE SPECIFICATIONS FOR ADDITIONAL INFORMATION.



② HORIZONTAL SECTION

TYPICAL PACKAGE DIMENSIONS (NARROW STILE)			
PACKAGE WIDTH	NOMINAL CLEAR DOOR OPENING	SLIDING DOOR PANEL NOMINAL WIDTH	EMERGENCY BREAKOUT NOM. WIDTH
84"	44.6"	28.4"	74.8"
96"	52.6"	32.4"	86.8"
108"	60.6"	36.4"	98.8"

**DURA-GLIDE
5300
SERIES**

3-PANEL TELESCOPIC RIGHT HAND WITH TRANSOM & ACCESS CONTROL, SURFACE

PROJECT INFORMATION

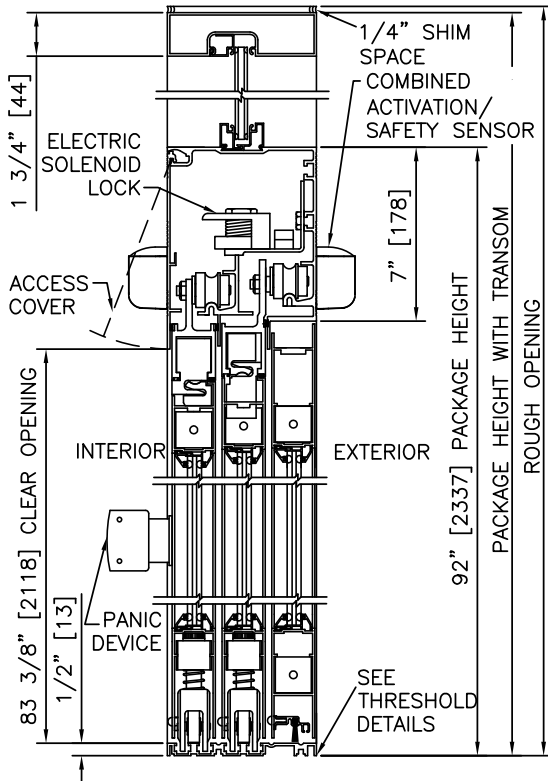
PROJECT NAME:

LOCATION:

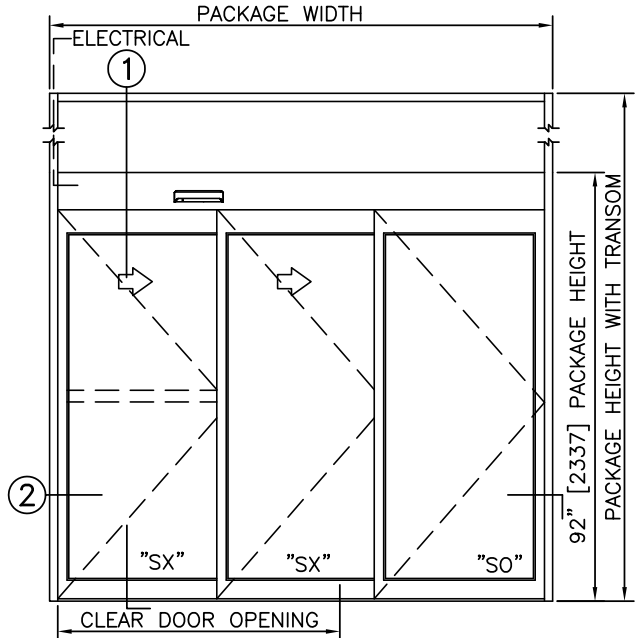
DOOR NUMBER(S):

DATE:

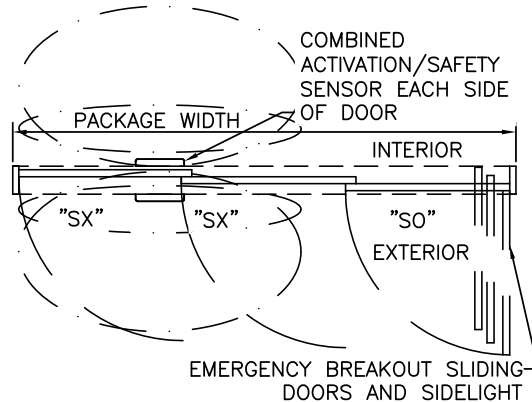
SHEET: OF



1 VERTICAL SECTION



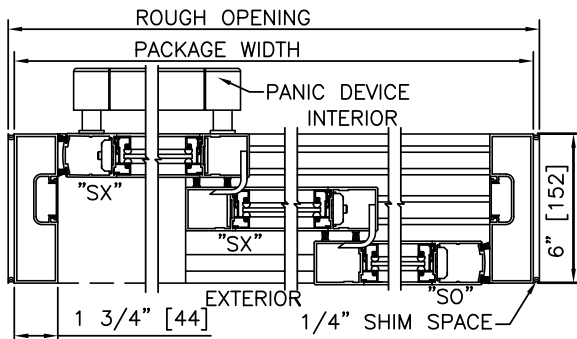
ELEVATION



PLAN

NOTES

1. ELECTRICAL REQUIREMENTS: BY ELECTRICAL CONTRACTOR
120 VAC, 5 AMP MIN TO POWER OPERATOR
CONTROL CIRCUIT FROM SECURE ACTIVATION TO OPERATOR
2. ROUGH OPENING SHALL PROVIDE 1/4"[6] SHIM SPACE ON
SIDES AND TOP OF PACKAGE.
3. LIMITS OF ACTIVATION AND SAFETY ZONES ARE FOR
REFERENCE ONLY; SEE ANSI/BHMA A156.10 FOR DETAILED
REQUIREMENTS.
4. SEE SPECIFICATIONS FOR ADDITIONAL INFORMATION.



2 HORIZONTAL SECTION

TYPICAL PACKAGE DIMENSIONS (NARROW STILE)

PACKAGE WIDTH	NOMINAL CLEAR DOOR OPENING	SLIDING DOOR PANEL NOMINAL WIDTH	EMERGENCY BREAKOUT NOM. WIDTH
84"	44.6"	28.4"	74.8"
96"	52.6"	32.4"	86.8"
108"	60.6"	36.4"	98.8"

**DURA-GLIDE
5300
SERIES**

PROJECT INFORMATION

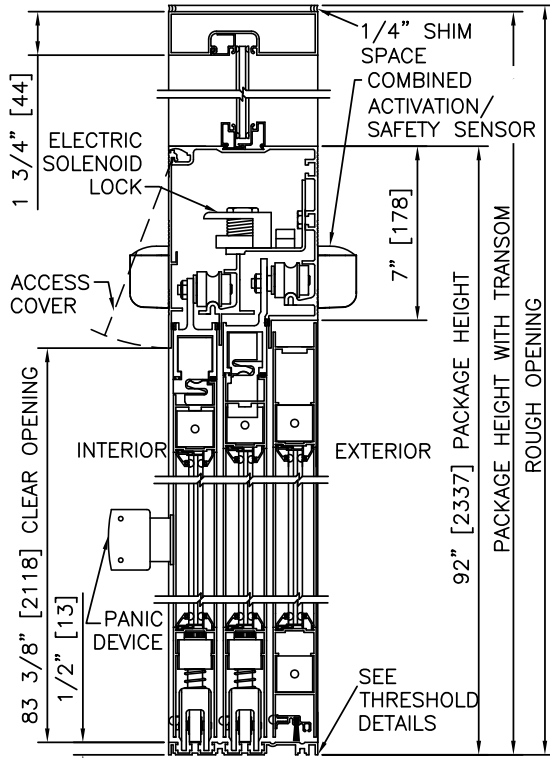
PROJECT NAME:

LOCATION:

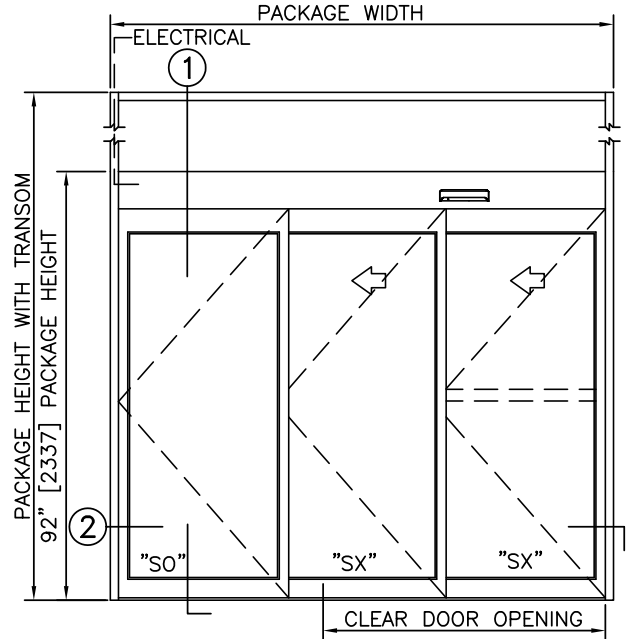
DOOR NUMBER(S):

DATE:

SHEET: OF



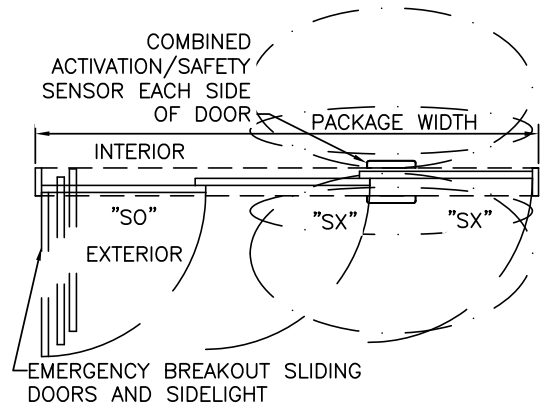
1 VERTICAL SECTION



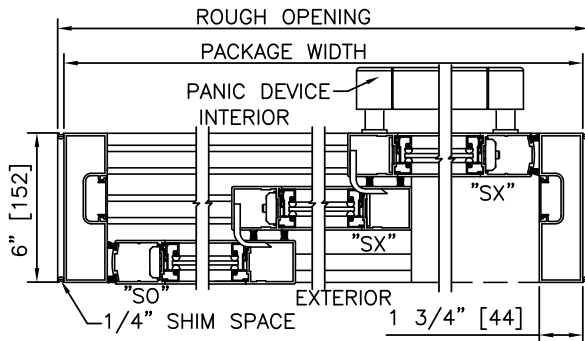
ELEVATION

NOTES

1. ELECTRICAL REQUIREMENTS: BY ELECTRICAL CONTRACTOR
120 VAC, 5 AMP MIN TO POWER OPERATOR
CONTROL CIRCUIT FROM SECURE ACTIVATION TO OPERATOR
2. ROUGH OPENING SHALL PROVIDE 1/4"[6] SHIM SPACE ON SIDES AND TOP OF PACKAGE.
3. LIMITS OF ACTIVATION AND SAFETY ZONES ARE FOR REFERENCE ONLY; SEE ANSI/BHMA A156.10 FOR DETAILED REQUIREMENTS.
4. SEE SPECIFICATIONS FOR ADDITIONAL INFORMATION.



PLAN



2 HORIZONTAL SECTION

TYPICAL PACKAGE DIMENSIONS (NARROW STILE)

PACKAGE WIDTH	NOMINAL CLEAR DOOR OPENING	SLIDING DOOR PANEL NOMINAL WIDTH	EMERGENCY BREAKOUT NOM. WIDTH
84"	44.6"	28.4"	74.8"
96"	52.6"	32.4"	86.8"
108"	60.6"	36.4"	98.8"

**DURA-GLIDE
5300
SERIES**

3-PANEL TELESCOPIC RIGHT HAND WITH ACCESS CONTROL, RECESSED

PROJECT INFORMATION

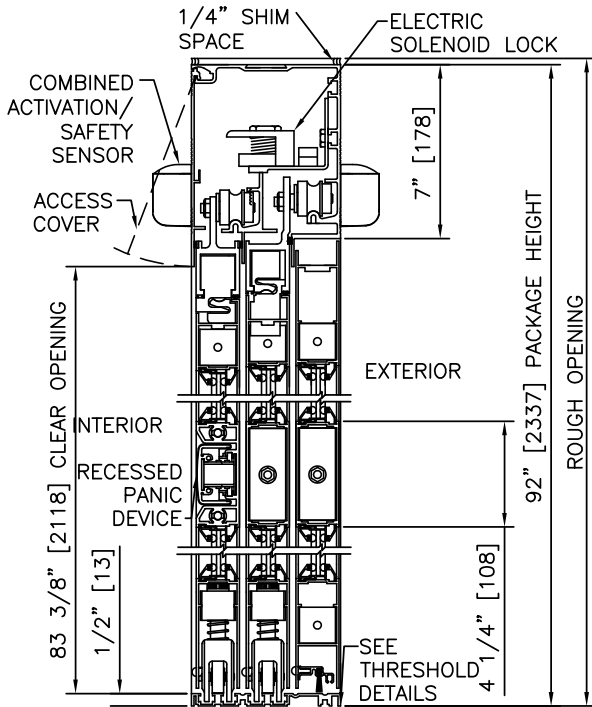
PROJECT NAME:

LOCATION:

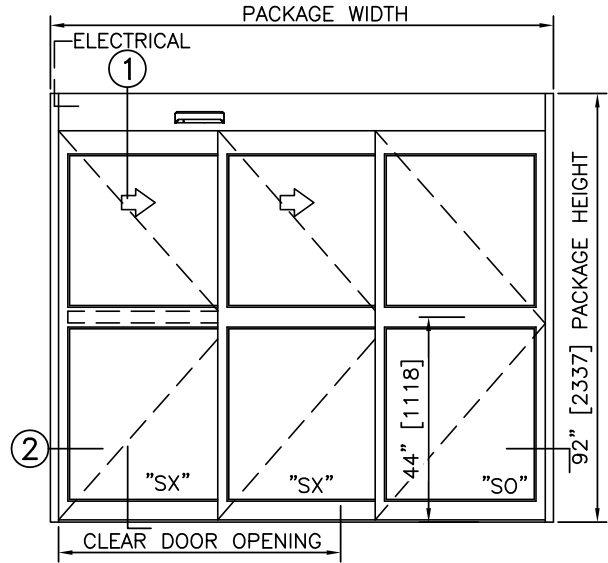
DOOR NUMBER(S):

DATE:

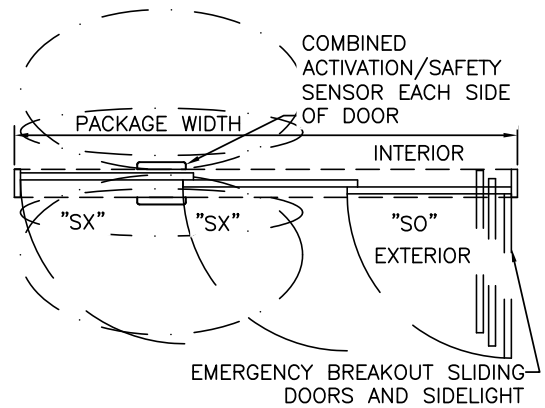
SHEET: OF



① VERTICAL SECTION



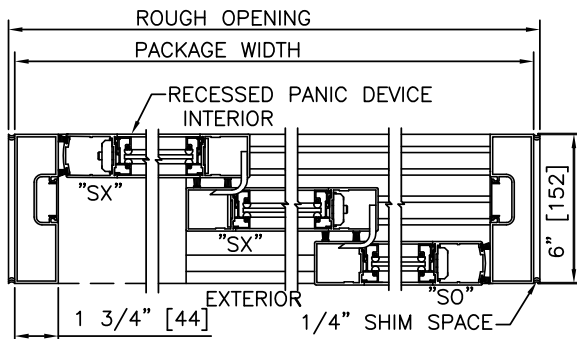
ELEVATION



PLAN

NOTES

1. ELECTRICAL REQUIREMENTS: BY ELECTRICAL CONTRACTOR
120 VAC, 5 AMP MIN TO POWER OPERATOR.
CONTROL CIRCUIT FROM SECURE ACTIVATION TO OPERATOR.
2. ROUGH OPENING SHALL PROVIDE 1/4"[6] SHIM SPACE ON SIDES AND TOP OF PACKAGE.
3. LIMITS OF ACTIVATION AND SAFETY ZONES ARE FOR REFERENCE ONLY; SEE ANSI/BHMA A156.10 FOR DETAILED REQUIREMENTS.
4. SEE SPECIFICATIONS FOR ADDITIONAL INFORMATION.



② HORIZONTAL SECTION

TYPICAL PACKAGE DIMENSIONS (NARROW STILE)

PACKAGE WIDTH	NOMINAL CLEAR DOOR OPENING	SLIDING DOOR PANEL NOMINAL WIDTH	EMERGENCY BREAKOUT NOM. WIDTH
84"	44.6"	28.4"	74.8"
96"	52.6"	32.4"	86.8"
108"	60.6"	36.4"	98.8"

**DURA-GLIDE
5300
SERIES**

3-PANEL TELESCOPIC LEFT HAND WITH ACCESS CONTROL, RECESSED

PROJECT INFORMATION

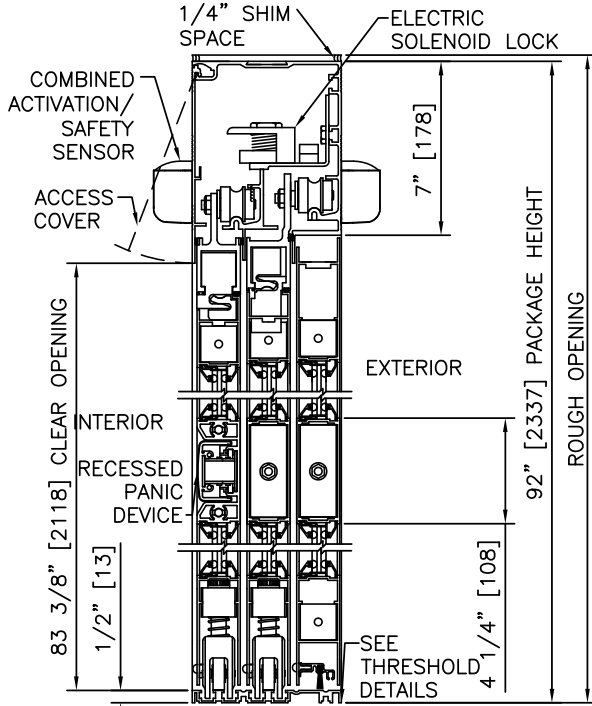
PROJECT NAME:

LOCATION:

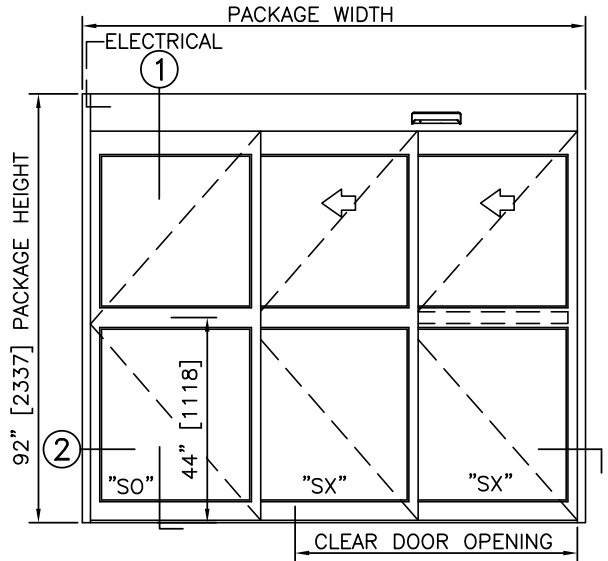
DOOR NUMBER(S):

DATE:

SHEET: OF



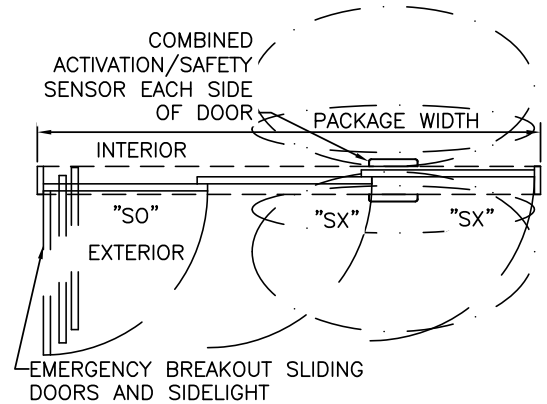
① VERTICAL SECTION



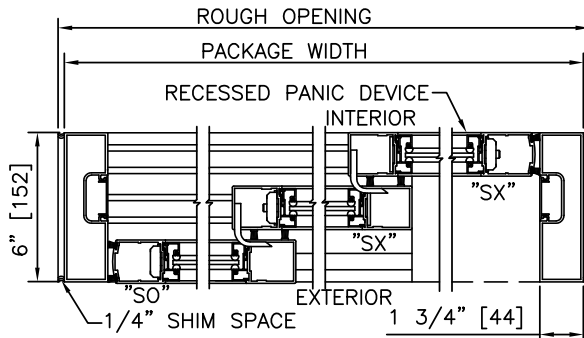
ELEVATION

NOTES

1. ELECTRICAL REQUIREMENTS: BY ELECTRICAL CONTRACTOR
120 VAC, 5 AMP MIN TO POWER OPERATOR
CONTROL CIRCUIT FROM SECURE ACTIVATION TO OPERATOR
2. ROUGH OPENING SHALL PROVIDE 1/4"[6] SHIM SPACE ON
SIDES AND TOP OF PACKAGE.
3. LIMITS OF ACTIVATION AND SAFETY ZONES ARE FOR
REFERENCE ONLY; SEE ANSI/BHMA A156.10 FOR DETAILED
REQUIREMENTS.
4. SEE SPECIFICATIONS FOR ADDITIONAL INFORMATION.



PLAN



② HORIZONTAL SECTION

TYPICAL PACKAGE DIMENSIONS (NARROW STILE)

PACKAGE WIDTH	NOMINAL CLEAR DOOR OPENING	SLIDING DOOR PANEL NOMINAL WIDTH	EMERGENCY BREAKOUT NOM. WIDTH
84"	44.6"	28.4"	74.8"
96"	52.6"	32.4"	86.8"
108"	60.6"	36.4"	98.8"

**DURA-GLIDE
5300
SERIES**

3-PANEL TELESCOPIC RIGHT HAND WITH TRANSOM & ACCESS CONTROL, RECESSED

PROJECT INFORMATION

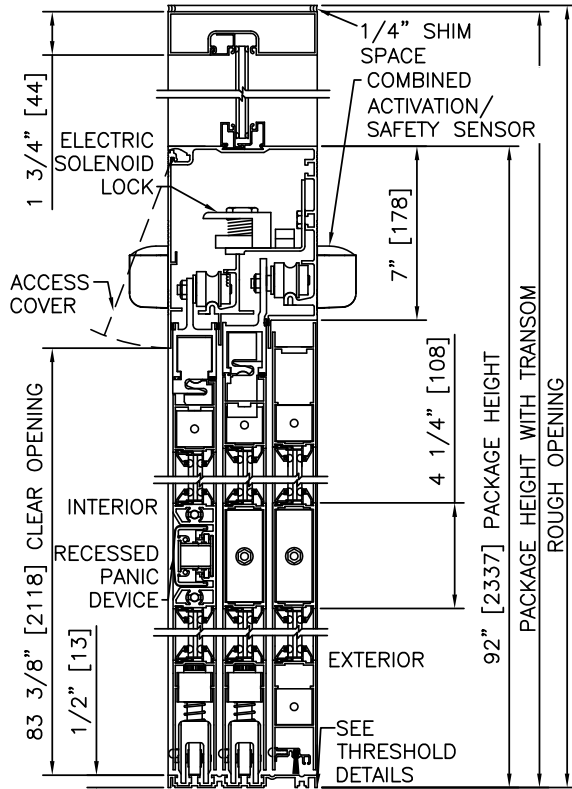
PROJECT NAME:

LOCATION:

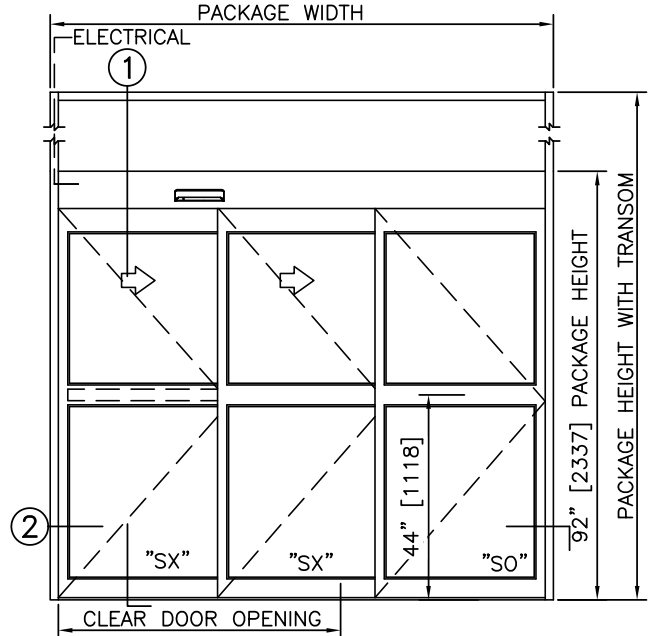
DOOR NUMBER(S):

DATE:

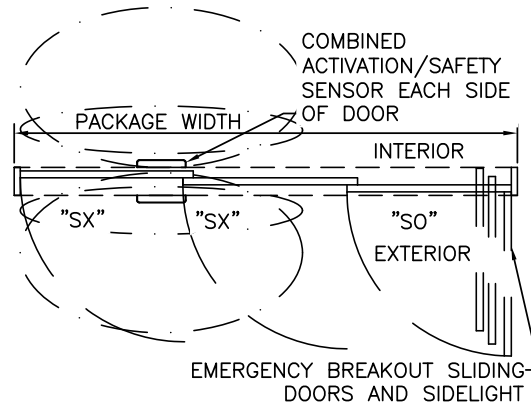
SHEET: OF



① VERTICAL SECTION



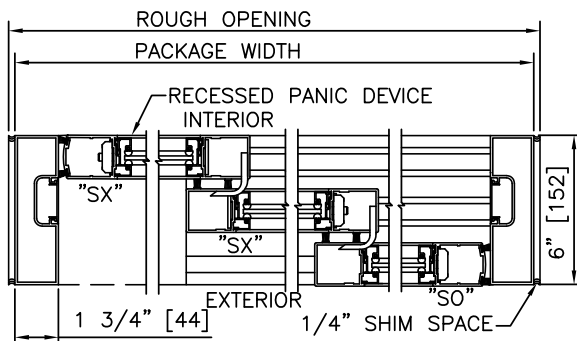
ELEVATION



PLAN

NOTES

1. ELECTRICAL REQUIREMENTS: BY ELECTRICAL CONTRACTOR
120 VAC, 5 AMP MIN TO POWER OPERATOR
CONTROL CIRCUIT FROM SECURE ACTIVATION TO OPERATOR
2. ROUGH OPENING SHALL PROVIDE 1/4"[6] SHIM SPACE ON
SIDES AND TOP OF PACKAGE.
3. LIMITS OF ACTIVATION AND SAFETY ZONES ARE FOR
REFERENCE ONLY; SEE ANSI/BHMA A156.10 FOR DETAILED
REQUIREMENTS.
4. SEE SPECIFICATIONS FOR ADDITIONAL INFORMATION.



② HORIZONTAL SECTION

TYPICAL PACKAGE DIMENSIONS (NARROW STILE)

PACKAGE WIDTH	NOMINAL CLEAR DOOR OPENING	SLIDING DOOR PANEL NOMINAL WIDTH	EMERGENCY BREAKOUT NOM. WIDTH
84"	44.6"	28.4"	74.8"
96"	52.6"	32.4"	86.8"
108"	60.6"	36.4"	98.8"

**DURA-GLIDE
5300
SERIES**

3-PANEL TELESCOPIC LEFT HAND WITH TRANSOM & ACCESS CONTROL, RECESSED

PROJECT INFORMATION

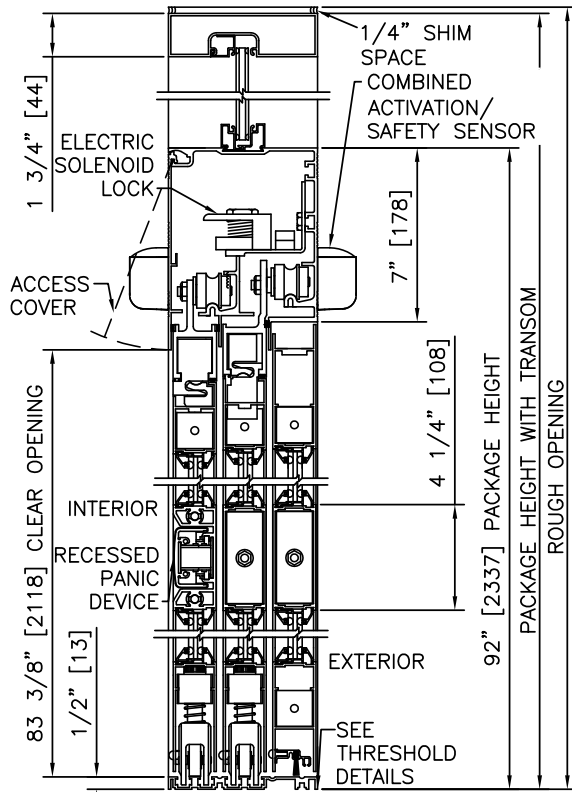
PROJECT NAME:

LOCATION:

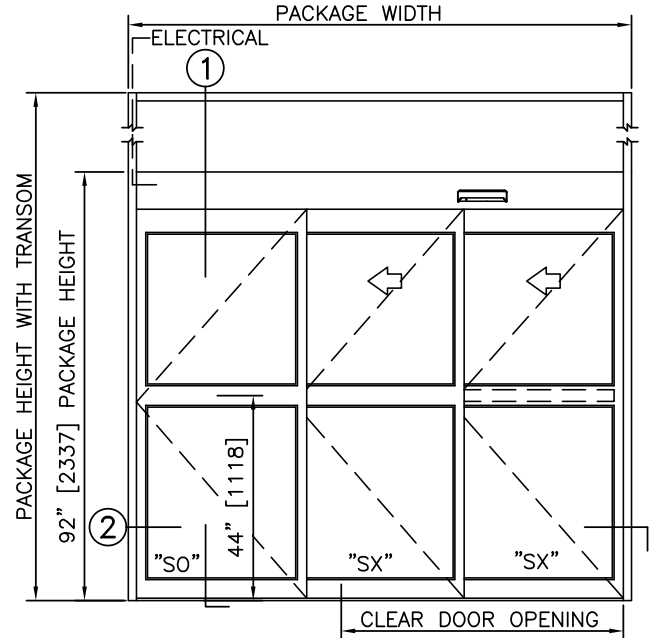
DOOR NUMBER(S):

DATE:

SHEET: OF



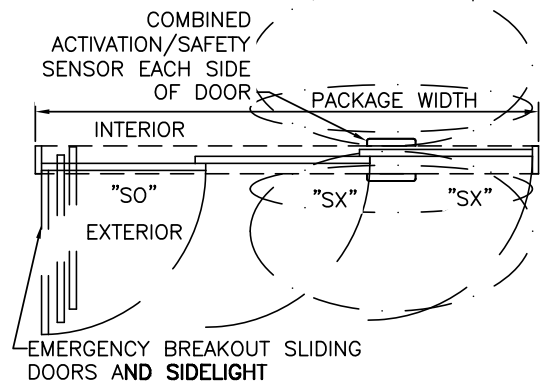
① VERTICAL SECTION



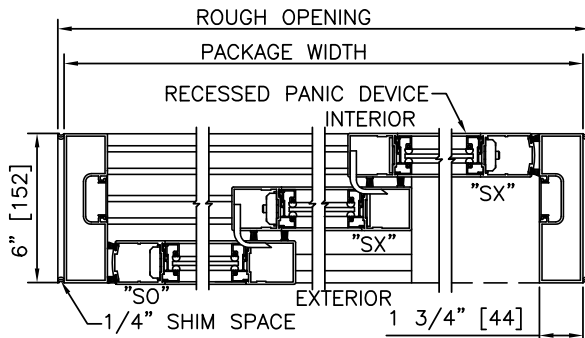
ELEVATION

NOTES

1. ELECTRICAL REQUIREMENTS: BY ELECTRICAL CONTRACTOR
120 VAC, 5 AMP MIN TO POWER OPERATOR
CONTROL CIRCUIT FROM SECURE ACTIVATION TO OPERATOR
2. ROUGH OPENING SHALL PROVIDE 1/4"[6] SHIM SPACE ON SIDES AND TOP OF PACKAGE.
3. LIMITS OF ACTIVATION AND SAFETY ZONES ARE FOR REFERENCE ONLY; SEE ANSI/BHMA A156.10 FOR DETAILED REQUIREMENTS.
4. SEE SPECIFICATIONS FOR ADDITIONAL INFORMATION.



PLAN



② HORIZONTAL SECTION

TYPICAL PACKAGE DIMENSIONS (NARROW STILE)

PACKAGE WIDTH	NOMINAL CLEAR DOOR OPENING	SLIDING DOOR PANEL NOMINAL WIDTH	EMERGENCY BREAKOUT NOM. WIDTH
84"	44.6"	28.4"	74.8"
96"	52.6"	32.4"	86.8"
108"	60.6"	36.4"	98.8"