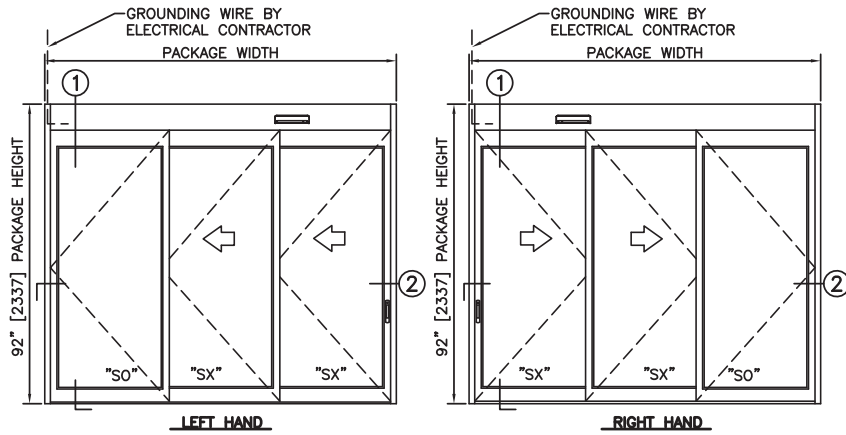


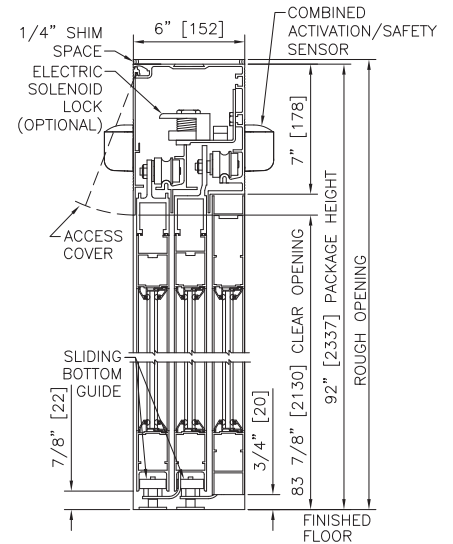


CONFIGURATIONS:	3 Panel, Trackless, Automatic
SWING OUT	Full Breakout, from Fully Open Position
TYPICAL HEIGHT:	92" (Std); taller available
TYPICAL WIDTH:	3-Panel (Std); 84" to 108"
HEADER SIZE:	8" Nominal Height
JAMB DIMENSION:	6" x 1 3/4"
CLEAR DOOR OPENING WIDTH:	44 1/2" to 60 1/2"
SWING OUT OPENING WIDTH:	72 3/8" to 96 3/8"
SUPPORTED GLAZING:	1/4" (Std); 5/8", 1/2", 1"
STILES:	Narrow (Std)
BOTTOM RAILS:	4" (Std), 6", 8"
MUNTINS	0 (Std), 1, or 2
FINISHES:	Anodized, PVDF Paint
HARDWARE OPTIONS:	Electric Solenoid Lock
CODES AND STANDARDS:	ANSI/BHMA A156.10



ELEVATION VIEW

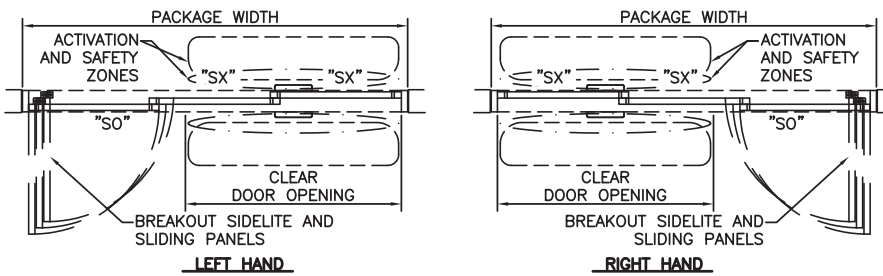
SCALE: 3/8" = 1'-0"



LEFT HAND & RIGHT HAND

1 VERTICAL SECTION

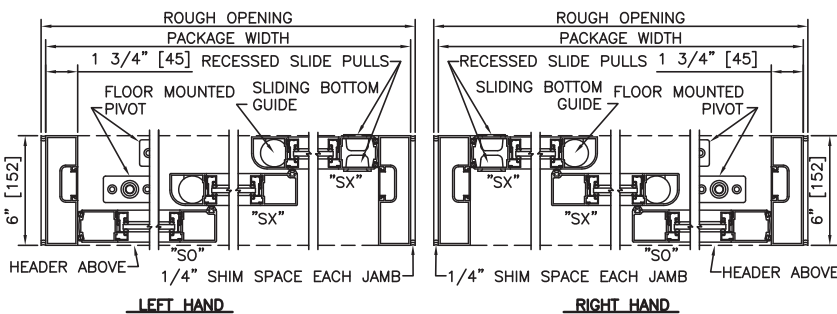
SCALE: 2" = 1'-0"



PLAN VIEW

SCALE: 3/8" = 1'-0"

TYPICAL PACKAGE DIMENSIONS (NARROW STILE)			
PACKAGE WIDTH	NOMINAL CLEAR DOOR OPENING	SLIDING DOOR PANEL NOMINAL WIDTH	BREAKOUT NOMINAL WIDTH
84"	44.6"	28.4"	72.4"
96"	52.6"	32.4"	84.4"
108"	60.6"	36.4"	96.4"



2 HORIZONTAL SECTION

SCALE: 2" = 1'-0"

3-PANEL TELESCOPIC FORMULAS - NARROW STILE
 PACKAGE WIDTH = 3/2 CLEAR DOOR OPENING + 17.2"
 CLEAR DOOR OPENING = 2/3 PACKAGE WIDTH - 11.4"
 BREAKOUT WIDTH = PACKAGE WIDTH - 11.6"
 DOOR PANEL WIDTH (SX, SO) = 1/3 PACKAGE WIDTH + 0.5"
 DOOR PANEL WIDTH (SX) = 1/3 PACKAGE WIDTH + 0.4"

NOTES

- ELECTRICAL REQUIREMENTS: BY ELECTRICAL CONTRACTOR 120 VAC, 5 AMP MIN TO POWER OPERATOR. CONTROL CIRCUIT FROM REMOTE ACTIVATION TO OPERATOR.
- ROUGH OPENING SHALL PROVIDE 1/4"[6] SHIM SPACE ON SIDES AND TOP OF PACKAGE.
- STANDARD PACKAGE INCLUDES ELECTRIC LATCHING.
- STANDARD GLAZING STOPS FOR ALL PANELS ARE 1/4"[6]; 5/8"[16] AND 1"[25] AVAILABLE.
- STANDARD STILES AND BOTTOM RAILS SHOWN; BOTTOM RAILS TO 8"[203], AND MUNTINS AVAILABLE.
- SLIDING PANELS MUST BE DRIVEN TO FULL OPEN POSITION AND ENGAGE FLOOR MOUNTED HINGE PINS PRIOR TO PANEL BREAKOUT.
- LIMITS OF ACTIVATION AND SAFETY ZONES ARE FOR REFERENCE ONLY.
- SEE SPECIFICATIONS FOR ADDITIONAL INFORMATION.

REVISION: 11/03/2017