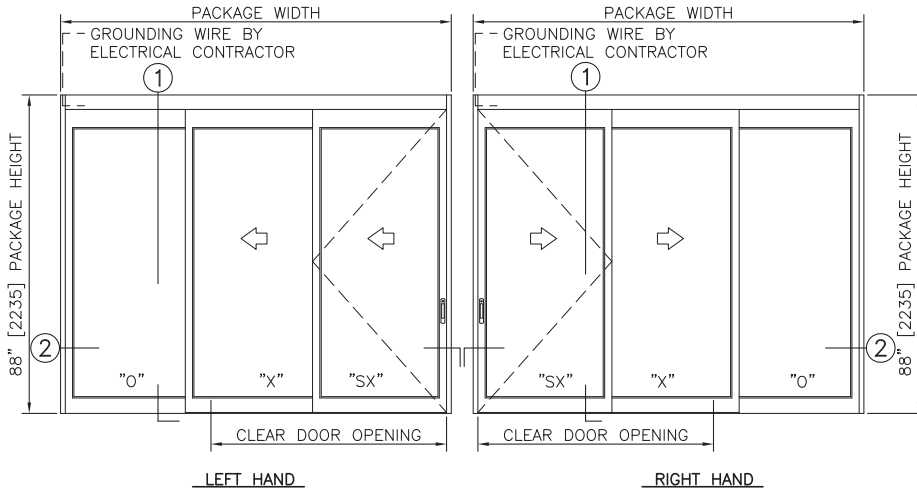




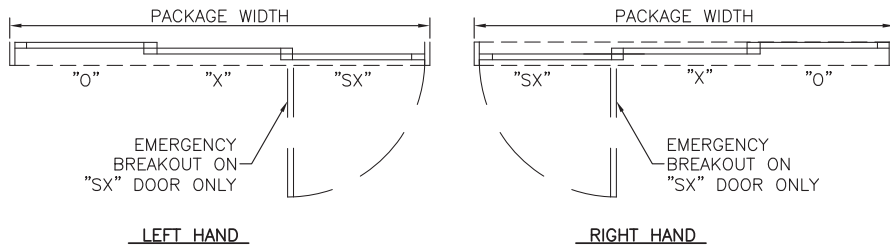
*Privacy Glass Header Shown

CONFIGURATIONS:	3 & 6-Panel, 3-Panel S&D, Trackless
TYPICAL HEIGHT:	88" (Std); taller available.
TYPICAL WIDTH:	3-Panel (Std); 84" to 108"
HEADER SIZE:	4" Nominal Height
BREAKOUT:	Lead Sliding Panel Breakout, Any Position
JAMB DIMENSION:	6" x 1 3/4"
CLEAR DOOR OPENING:	3-Panel (Std); 44 1/2" to 60 1/2"
BREAKOUT OPENING:	3-Panel (Std); 26" to 34"
SUPPORTED GLAZING:	1/4" (Std); 5/8", 1/2", 1" Insulated, Electric Privacy Glass
STILES:	Narrow (Std), and Medium
BOTTOM RAILS:	4" (Std), 6", 8", 10", 12", other custom
FINISHES:	Anodized, PVDF Paint, Anti-Microbial (Touch Points or All)
HARDWARE OPTIONS:	Positive Latch, Single/Multi-Point Locking
LISTINGS:	UL1784
RATINGS:	3-Panel Only: UL 1784 Leakage (Smoke & Draft)
CODES AND STANDARDS:	Smoke Provisions: (3-Panel Only) NFPA 101, NFPA 105, IBC Egress Provisions: NFPA 101, IBC



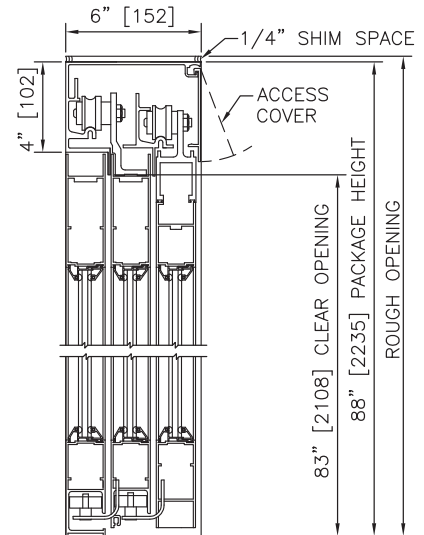
ELEVATION VIEW

SCALE: 3/8" = 1'-0"



PLAN VIEW

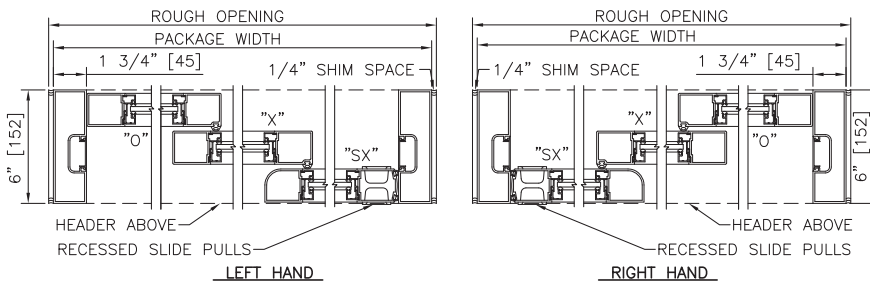
SCALE: 3/8" = 1'-0"



LEFT HAND & RIGHT HAND

1 VERTICAL SECTION

SCALE: 2" = 1'-0"



2 HORIZONTAL SECTION

SCALE: 2" = 1'-0"

TYPICAL PACKAGE DIMENSIONS (NARROW STILE)				
PACKAGE WIDTH	NOMINAL CLEAR DOOR OPENING	"SX", "O" PANEL NOMINAL WIDTH	"X" PANEL NOMINAL WIDTH	EMERGENCY BREAKOUT NOM. WIDTH
84"	44.6"	28.5"	28.4"	26.0"
96"	52.6"	32.5"	32.4"	30.0"
108"	60.6"	36.5"	36.4"	34.0"

3-PANEL TELESCOPIC FORMULAS – NARROW STILE

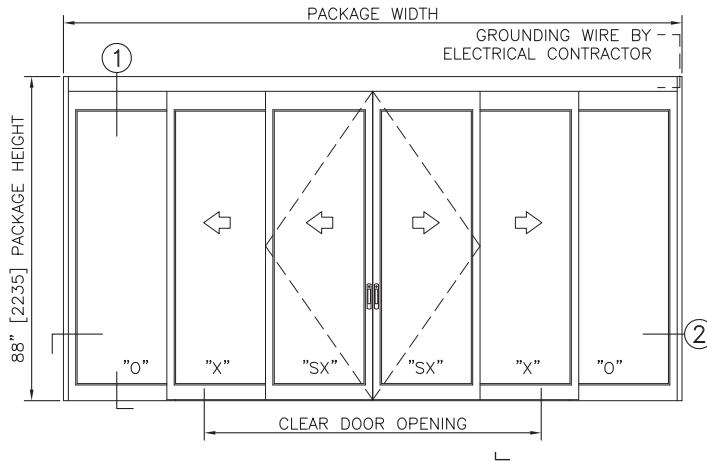
PACKAGE WIDTH = 3/2 CLEAR DOOR OPENING + 17.2"
 CLEAR DOOR OPENING = 2/3 PACKAGE WIDTH - 11.4"
 EMERGENCY BREAKOUT WIDTH = PANEL WIDTH (SX) - 2.6"
 DOOR PANEL WIDTH (SX, O) = 1/3 PACKAGE WIDTH + 0.5"
 DOOR PANEL WIDTH (X) = 1/3 PACKAGE WIDTH + 0.4"

3-PANEL TELESCOPIC FORMULAS – MEDIUM STILE

PACKAGE WIDTH = 3/2 CLEAR DOOR OPENING + 23.1"
 CLEAR DOOR OPENING = 2/3 PACKAGE WIDTH - 15.4"
 EMERGENCY BREAKOUT WIDTH = PANEL WIDTH - 4.1"
 DOOR PANEL WIDTH (ALL) = 1/3 PACKAGE WIDTH + 1.5"

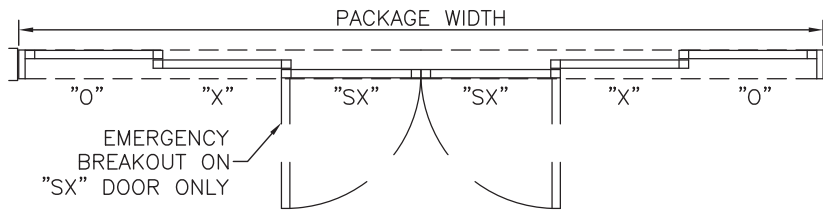
NOTES

1. PACKAGE SHALL BE GROUNDED TO BUILDING GROUND SYSTEM. GROUNDING WIRE BY ELECTRICAL CONTRACTOR.
2. ROUGH OPENING SHALL PROVIDE 1/4"[6] SHIM SPACE ON SIDES AND TOP OF PACKAGE.
3. STANDARD PACKAGE EXCLUDES LATCHING OR LOCKING. POSITIVE LATCHING AND LOCKING SYSTEMS AVAILABLE.
4. STANDARD GLAZING STOPS FOR ALL PANELS ARE 1/4"[6]; 5/8"[16] AND 1"[25] AVAILABLE.
5. STANDARD STILES, AND BOTTOM RAILS SHOWN; MEDIUM STILES, BOTTOM RAILS TO 12"305], AND MUNTINS AVAILABLE.



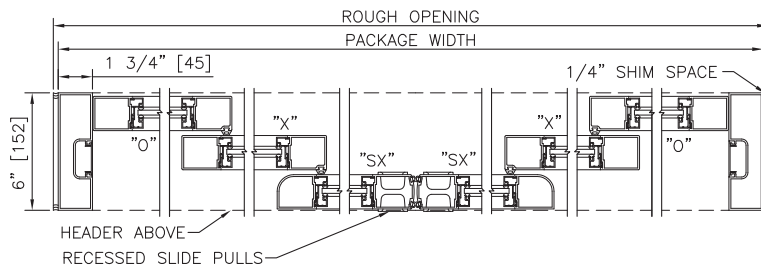
ELEVATION VIEW

SCALE: 3/8" = 1'-0"



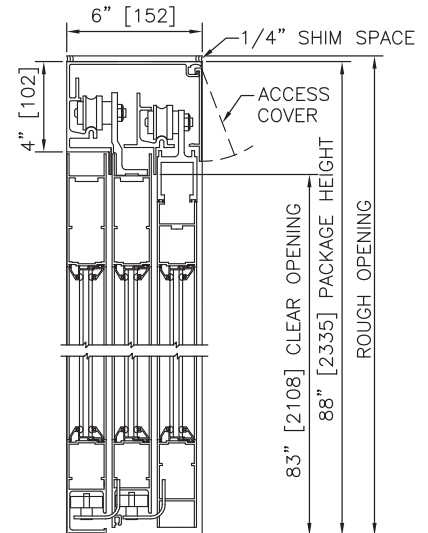
PLAN VIEW

SCALE: 3/8" = 1'-0"



HORIZONTAL SECTION

SCALE: 2" = 1'-0"



LEFT HAND & RIGHT HAND

VERTICAL SECTION

SCALE: 2" = 1'-0"

TYPICAL PACKAGE DIMENSIONS (NARROW STILE)			
PACKAGE WIDTH	NOMINAL CLEAR DOOR OPENING	SLIDING DOOR PANEL NOMINAL WIDTH	EMERGENCY BREAKOUT NOM. WIDTH
120"	59.5"	21.0"	37.1"
144"	75.5"	25.0"	45.1"
168"	91.5"	29.0"	53.1"

6-PANEL TELESCOPIC FORMULAS – NARROW STILE

PACKAGE WIDTH = 3/2 CLEAR DOOR OPENING + 30.7"
 CLEAR DOOR OPENING = 2/3 PACKAGE WIDTH - 20.5"
 EMERGENCY BREAKOUT WIDTH = 2 X DOOR PANEL WIDTH - 5.1"
 DOOR PANEL WIDTH (SX, O) = 1/6 PACKAGE WIDTH + 1.1"
 DOOR PANEL WIDTH (X) = 1/6 PACKAGE WIDTH + 1.0"

6-PANEL TELESCOPIC FORMULAS – MEDIUM STILE

PACKAGE WIDTH = 3/2 CLEAR DOOR OPENING + 42.7"
 CLEAR DOOR OPENING = 2/3 PACKAGE WIDTH - 28.5"
 EMERGENCY BREAKOUT WIDTH = 2 X DOOR PANEL WIDTH - 8.3"
 DOOR PANEL WIDTH (ALL) = 1/6 PACKAGE WIDTH + 2.1"

NOTES

1. PACKAGE SHALL BE GROUNDED TO BUILDING GROUND SYSTEM. GROUNDING WIRE BY ELECTRICAL CONTRACTOR.
2. ROUGH OPENING SHALL PROVIDE 1/4"[6] SHIM SPACE ON SIDES AND TOP OF PACKAGE.
3. STANDARD PACKAGE EXCLUDES LATCHING OR LOCKING. LOCKING SYSTEMS AVAILABLE.
4. STANDARD GLAZING STOPS FOR ALL PANELS ARE 1/4"[6]; 5/8"[16] AND 1"[25] AVAILABLE.
5. STANDARD STILES, AND BOTTOM RAILS SHOWN; MEDIUM STILES, BOTTOM RAILS TO 12"305], AND MUNTINS AVAILABLE.