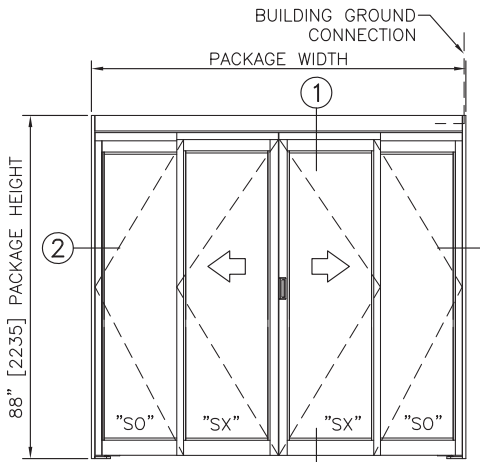
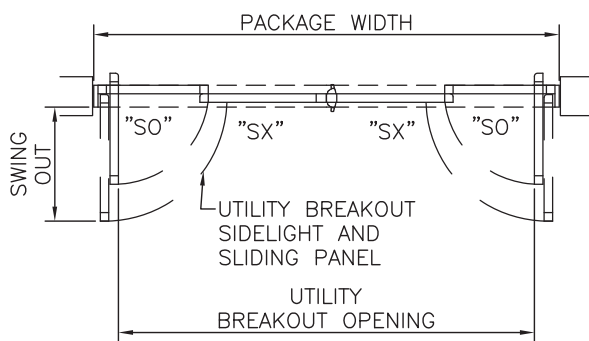




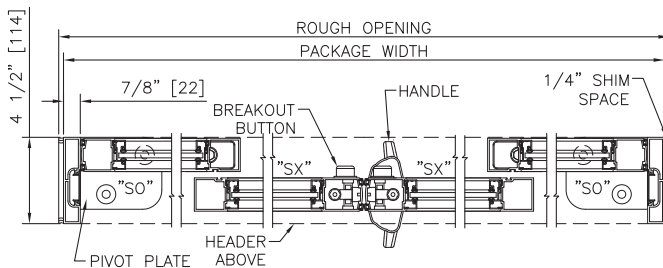
CONFIGURATIONS:	4-Panel Bi-Part, Smoke & Draft, Trackless, Manual
TYPICAL HEIGHT:	88"; taller available
TYPICAL WIDTH:	96", Range 84" to 144"
HEADER SIZE:	4" Nominal Height
BREAKAWAY:	Breakaway From Full Slide Open Position
JAMB DIMENSION:	7/8" x 4 1/2" Option: 1 3/4" x 4 1/2"
CLEAR DOOR OPENING WIDTH*:	41 1/8" at 96" (Std) Width Range: 35 1/8" to 65 1/8"
SUPPORTED GLAZING:	1/4" (Std); 5/8", 1/2", 1" Insulated
STILES:	Narrow
BOTTOM RAILS:	4" (Std), 6", 8", 10", 12", other custom
MUNTINS:	0 (Std) Optional 1, 2
FINISHES:	Anodized, PVDF Paint, Anti-Microbial (Touch Points or All)
HARDWARE:	Catch-Free Handle (Std) Optional: Positive Latch with Catch-Less Hook Shield, Single-Point Locking, Concealed Self Closing
LISTINGS:	UL1784
RATINGS:	Leakage (Smoke & Draft), Positive/Negative Pressure (Isolation)
CODES AND STANDARDS:	NFPA 105, NFPA 105, IBC , ASTM E283



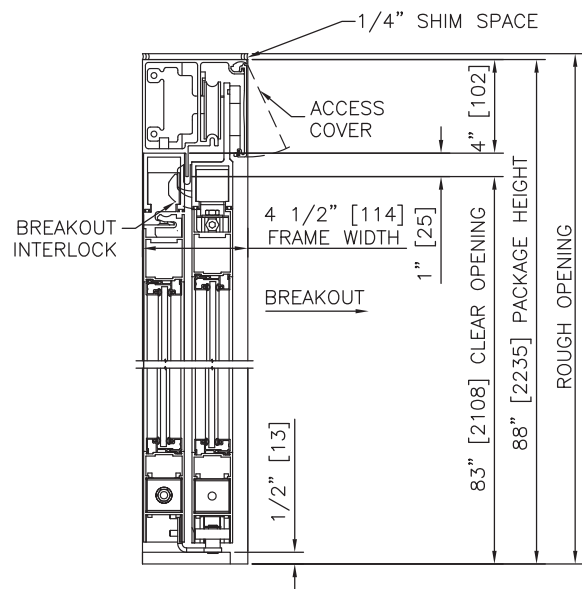
ELEVATION VIEW
SCALE: 3/8" = 1'-0"



PLAN VIEW
SCALE: 3/8" = 1'-0"



HORIZONTAL SECTION
SCALE: 2" = 1'-0"



LEFT HAND & RIGHT HAND
VERTICAL SECTION
SCALE: 2" = 1'-0"

TYPICAL PACKAGE DIMENSIONS (7/8" JAMBS)					
PACKAGE WIDTH	NOMINAL CLEAR DOOR OPENING	SLIDING PANEL NOMINAL WIDTH	SIDELIGHT PANEL NOMINAL WIDTH	UTILITY BREAKOUT NOMINAL WIDTH	SWING OUT NOMINAL WIDTH
84"	35.1"	23.1"	20.2"	73.8"	20.7"
[2134]	[892]	[586]	[513]	[1873]	[525]
96"	41.1"	26.1"	23.2"	85.8"	23.7"
[2438]	[1045]	[662]	[589]	[2178]	[602]
120"	53.1"	32.1"	29.2"	109.8"	29.7"
[3048]	[1349]	[814]	[741]	[2788]	[754]
144"	65.1"	38.1"	35.2"	133.8"	35.7"
[3658]	[1654]	[967]	[894]	[3397]	[906]

BI-PARTING FORMULAS (7/8" JAMBS)

PACKAGE WIDTH = 2 X CLEAR DOOR OPENING + 13.8"[349]
 CLEAR DOOR OPENING = 1/2 PACKAGE WIDTH - 6.9"[175]
 UTILITY BREAKOUT WIDTH = PACKAGE WIDTH - 10.3"[260]
 SX DOOR PANEL WIDTH = 1/4 PACKAGE WIDTH + 2.1"[52]
 SO DOOR PANEL WIDTH = 1/4 PACKAGE WIDTH - 0.8"[21]
 SWING OUT WIDTH = SX PANEL WIDTH - 2.4"[60]

BI-PARTING FORMULAS (1 3/4" JAMBS)

PACKAGE WIDTH = 2 X CLEAR DOOR OPENING + 15.5"[394]
 CLEAR DOOR OPENING = 1/2 PACKAGE WIDTH - 7.8"[197]
 UTILITY BREAKOUT WIDTH = PACKAGE WIDTH - 12.0"[305]
 SX DOOR PANEL WIDTH = 1/4 PACKAGE WIDTH + 1.6"[41]
 SO DOOR PANEL WIDTH = 1/4 PACKAGE WIDTH - 1.3"[32]
 SWING OUT WIDTH = SX PANEL WIDTH - 2.4"[60]

NOTES

1. CONNECTION TO BUILDING GROUND BY ELECTRICAL CONTRACTOR.
2. ROUGH OPENING SHALL PROVIDE 1/4"[6] SHIM SPACE ON SIDES AND TOP OF PACKAGE.
3. STANDARD PACKAGE EXCLUDES LATCHING OR LOCKING. POSITIVE LATCHING AND LOCKING SYSTEMS AVAILABLE; POSITIVE LATCHING INCLUDED ON LEAKAGE RATED ASSEMBLIES.
4. STANDARD GLAZING STOPS FOR ALL PANELS ARE 1/4"[6]; 1/2"[13], 5/8"[16], AND 1"[25] AVAILABLE.
5. STANDARD STILES, AND BOTTOM RAILS SHOWN; BOTTOM RAILS TO 12"[305]; 2"[51] AND 4 1/4"[108] MUNTINS AVAILABLE.
6. SEE SPECIFICATIONS FOR ADDITIONAL INFORMATION.