



SLIDING MANUAL ENTRANCES: PROCARE™ 8300BP 4-PANEL, BI-PARTING

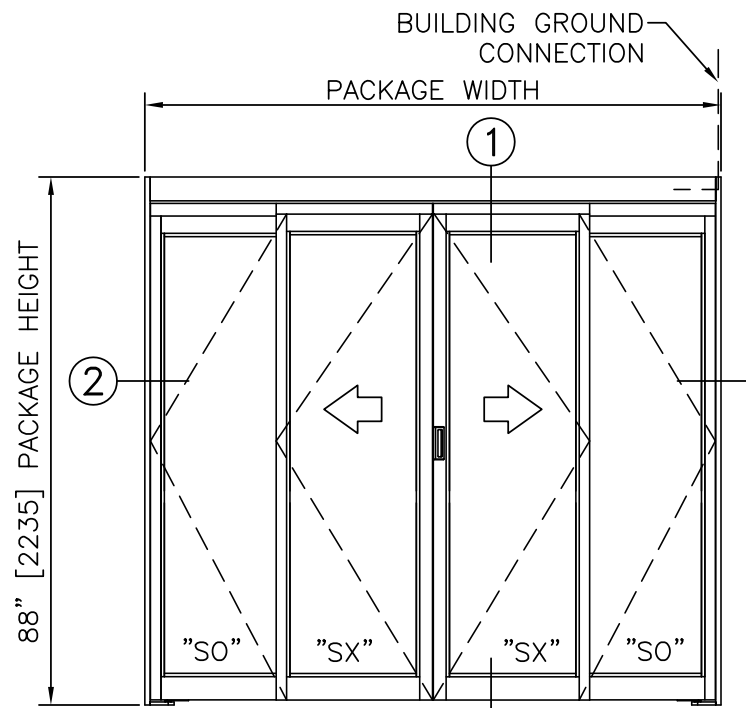
3.19 - BI-PARTING WITH OPTIONAL SMOKE & DRAFT

- **3.19.01 - BI-PARTING**
- **3.19.02 - BI-PARTING WITH SMOKE & DRAFT**

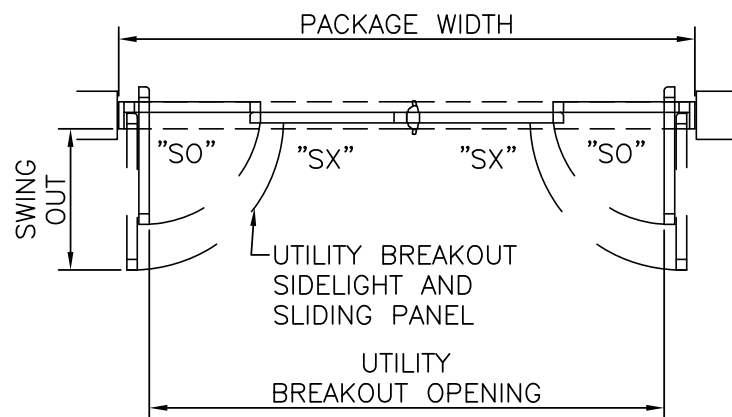
STANLEY
Access Technologies

PROCARE™
8300BP
SERIES

| | |
|-----------------------------|-----------|
| BI-PARTING TRACKLESS | |
| PROJECT INFORMATION | |
| PROJECT NAME: | |
| LOCATION: | |
| DOOR NUMBER(S): | |
| DATE: | SHEET: OF |



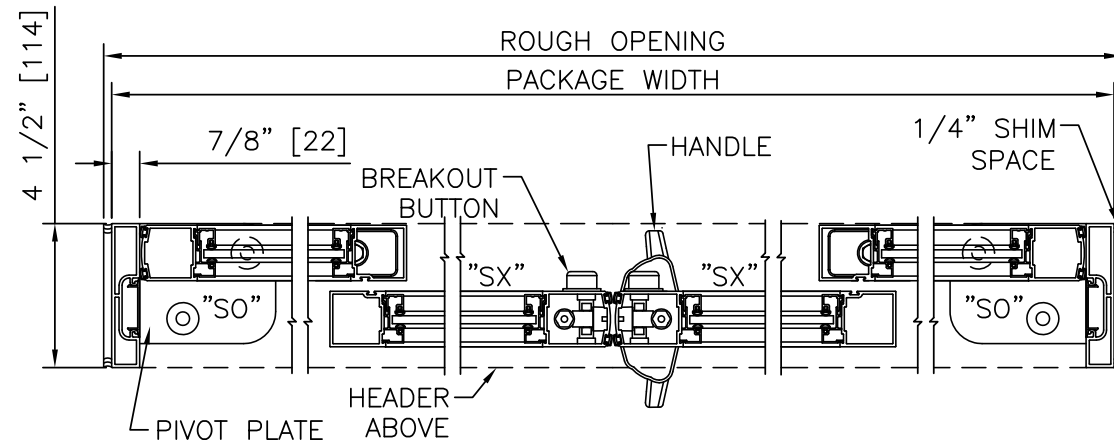
ELEVATION VIEW
SCALE: 3/8" = 1'-0"



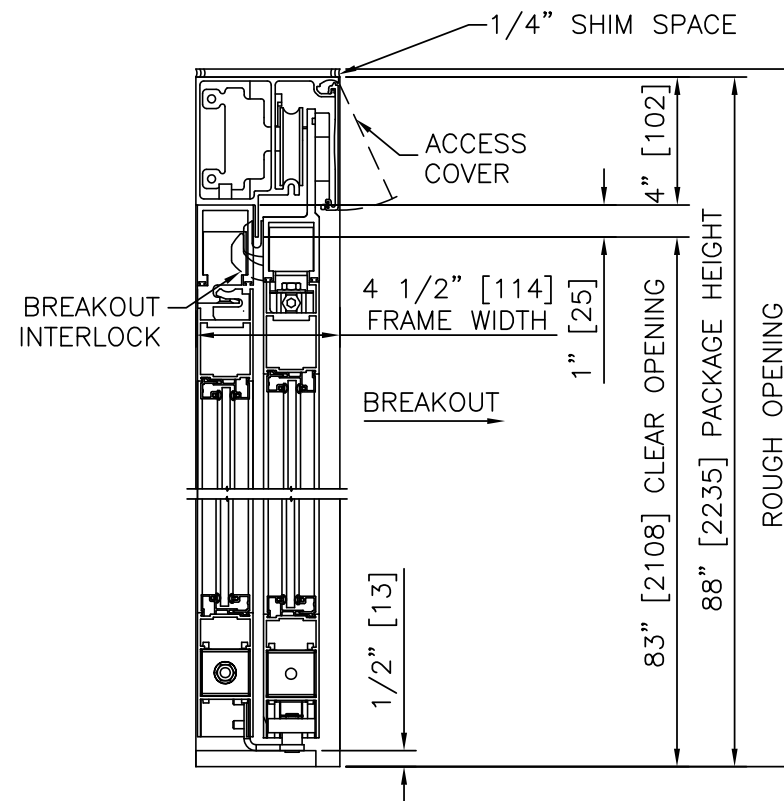
PLAN VIEW
SCALE: 3/8" = 1'-0"

NOTES

1. CONNECTION TO BUILDING GROUND BY ELECTRICAL CONTRACTOR.
2. ROUGH OPENING SHALL PROVIDE 1/4"[6] SHIM SPACE ON SIDES AND TOP OF PACKAGE.
3. STANDARD PACKAGE EXCLUDES LATCHING OR LOCKING. POSITIVE LATCHING AND LOCKING SYSTEMS AVAILABLE; POSITIVE LATCHING INCLUDED ON LEAKAGE RATED ASSEMBLIES.
4. STANDARD GLAZING STOPS FOR ALL PANELS ARE 1/4"[6]; 1/2"[13], 5/8"[16], AND 1"[25] AVAILABLE.
5. STANDARD STILES, AND BOTTOM RAILS SHOWN; BOTTOM RAILS TO 12"[305]; 2"[51] AND 4 1/4"[108] MUNTINS AVAILABLE.
6. SEE SPECIFICATIONS FOR ADDITIONAL INFORMATION.



② HORIZONTAL SECTION
SCALE: 2" = 1'-0"



① LEFT HAND & RIGHT HAND VERTICAL SECTION
SCALE: 2" = 1'-0"

PRODUCT OPTIONS

- FINISH**
- ANODIZED CLEAR CL2
 - CUSTOM
- LATCHING/LOCKING**
- POSITIVE LATCH
 - 1-POINT
 - LOCK INDICATOR
- BOTTOM RAILS**
- 4" (STD)
 - 6" 8" 10" 12"
- MUNTINS**
- 2"
 - QUANTITY 0 (STD) 1 2
 - 4 1/4"
- JAMBS**
- 7/8" X 4 1/2" POCKET JAMB (STD)
 - 1 3/4" X 4 1/2" POCKET JAMB
- OTHER OPTIONS**
- POSITIVE LATCH (REQUIRED FOR UL1784)
 - SMOKE & DRAFT SEALS (REQ'D FOR UL1784)
 - BOTTOM SWEEPS
 - SELF CLOSER
 - ANTI-MICROBIAL COATING
 - TOUCH POINTS
 - PANELS, FRAME, HEADER

BI-PARTING FORMULAS (7/8" JAMBS)

PACKAGE WIDTH = 2 X CLEAR DOOR OPENING + 13.8"[349]
 CLEAR DOOR OPENING = 1/2 PACKAGE WIDTH - 6.9"[175]
 UTILITY BREAKOUT WIDTH = PACKAGE WIDTH - 10.3"[260]
 SX DOOR PANEL WIDTH = 1/4 PACKAGE WIDTH + 2.1"[52]
 SO DOOR PANEL WIDTH = 1/4 PACKAGE WIDTH - 0.8"[21]
 SWING OUT WIDTH = SX PANEL WIDTH - 2.4"[60]

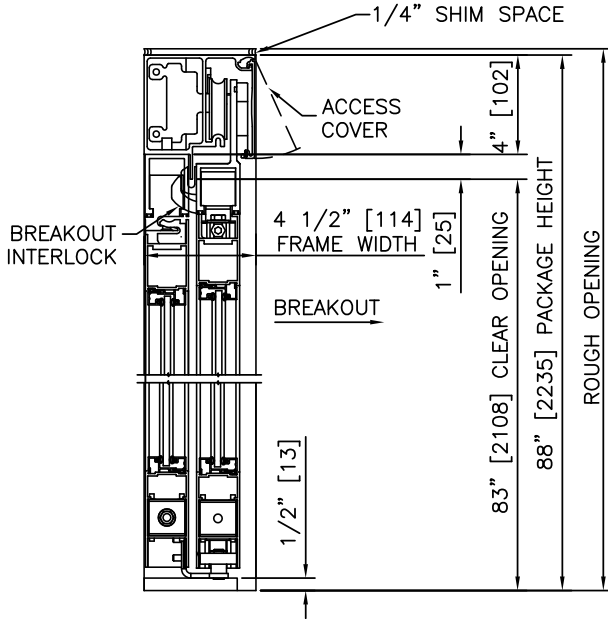
BI-PARTING FORMULAS (1 3/4" JAMBS)

PACKAGE WIDTH = 2 X CLEAR DOOR OPENING + 15.5"[394]
 CLEAR DOOR OPENING = 1/2 PACKAGE WIDTH - 7.8"[197]
 UTILITY BREAKOUT WIDTH = PACKAGE WIDTH - 12.0"[305]
 SX DOOR PANEL WIDTH = 1/4 PACKAGE WIDTH + 1.6"[41]
 SO DOOR PANEL WIDTH = 1/4 PACKAGE WIDTH - 1.3"[32]
 SWING OUT WIDTH = SX PANEL WIDTH - 2.4"[60]

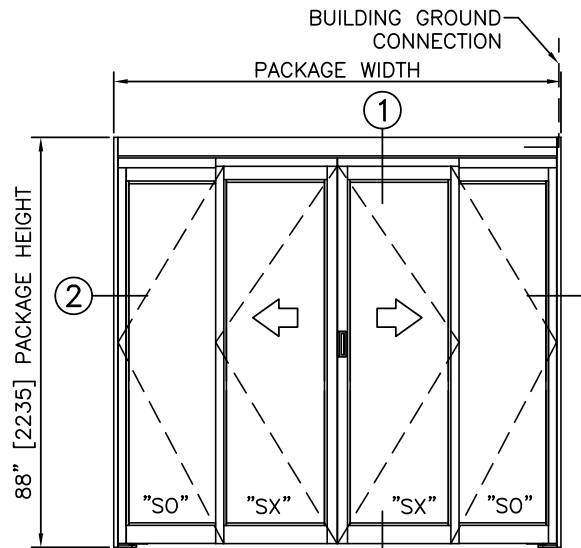
| TYPICAL PACKAGE DIMENSIONS (7/8" JAMBS) | | | | | |
|---|----------------------------|-----------------------------|------------------------------|--------------------------------|-------------------------|
| PACKAGE WIDTH | NOMINAL CLEAR DOOR OPENING | SLIDING PANEL NOMINAL WIDTH | SIDLIGHT PANEL NOMINAL WIDTH | UTILITY BREAKOUT NOMINAL WIDTH | SWING OUT NOMINAL WIDTH |
| 84" [2134] | 35.1" [892] | 23.1" [586] | 20.2" [513] | 73.8" [1873] | 20.7" [525] |
| 96" [2438] | 41.1" [1045] | 26.1" [662] | 23.2" [589] | 85.8" [2178] | 23.7" [602] |
| 120" [3048] | 53.1" [1349] | 32.1" [814] | 29.2" [741] | 109.8" [2788] | 29.7" [754] |
| 144" [3658] | 65.1" [1654] | 38.1" [967] | 35.2" [894] | 133.8" [3397] | 35.7" [906] |

PROCARE™
8300BP
SERIES

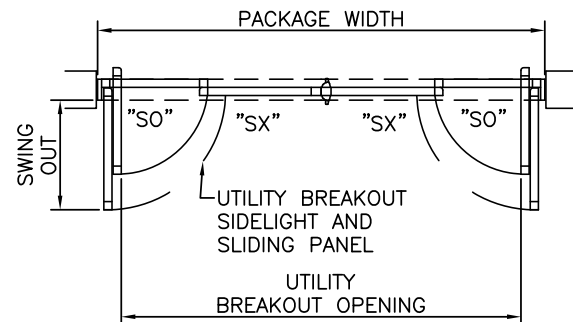
STANLEY
Access Technologies



① VERTICAL SECTION



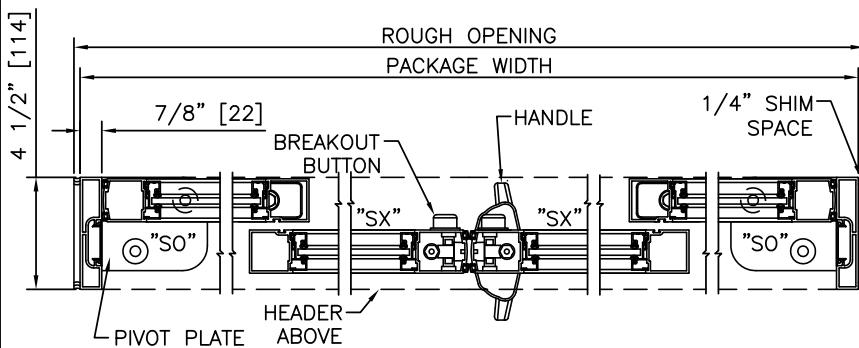
ELEVATION



PLAN

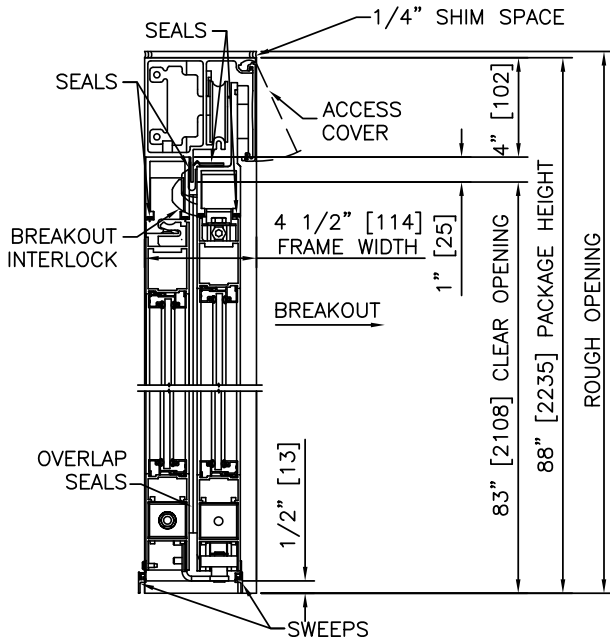
NOTES

1. CONNECTION TO BUILDING GROUND BY ELECTRICAL CONTRACTOR.
2. ROUGH OPENING SHALL PROVIDE 1/4"[6] SHIM SPACE ON SIDES AND TOP OF PACKAGE.
3. STANDARD PACKAGE EXCLUDES LATCHING OR LOCKING. POSITIVE LATCHING AND LOCKING SYSTEMS AVAILABLE; POSITIVE LATCHING INCLUDED ON LEAKAGE RATED ASSEMBLIES.
4. SEE SPECIFICATIONS FOR ADDITIONAL INFORMATION.

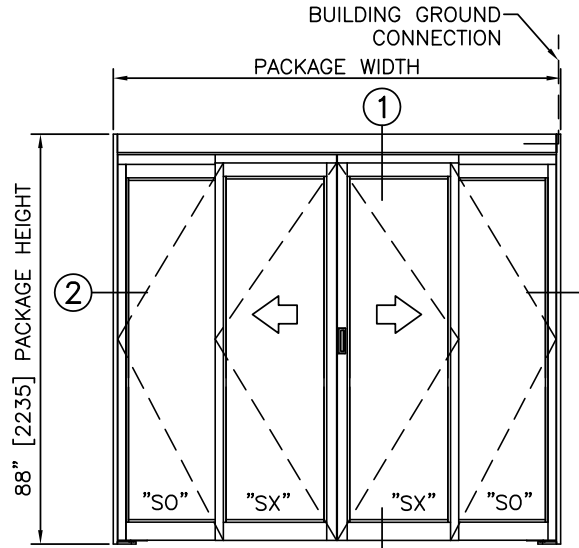


② HORIZONTAL SECTION

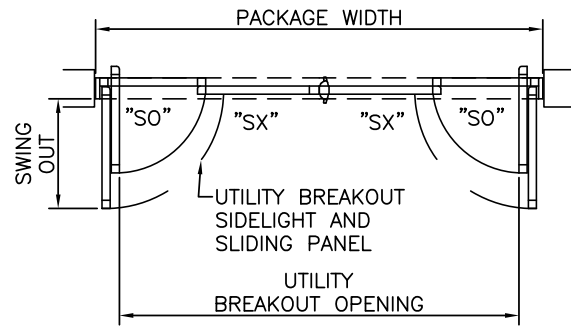
| TYPICAL PACKAGE DIMENSIONS (7/8" JAMBS) | | | | | |
|---|----------------------------|-----------------------------|-------------------------------|--------------------------------|-------------------------|
| PACKAGE WIDTH | NOMINAL CLEAR DOOR OPENING | SLIDING PANEL NOMINAL WIDTH | SIDELIGHT PANEL NOMINAL WIDTH | UTILITY BREAKOUT NOMINAL WIDTH | SWING OUT NOMINAL WIDTH |
| 84" [2134] | 35.1" [892] | 23.1" [586] | 20.2" [513] | 73.8" [1873] | 20.7" [525] |
| 96" [2438] | 41.1" [1045] | 26.1" [662] | 23.2" [589] | 85.8" [2178] | 23.7" [602] |
| 120" [3048] | 53.1" [1349] | 32.1" [814] | 29.2" [741] | 109.8" [2788] | 29.7" [754] |
| 144" [3658] | 65.1" [1654] | 38.1" [967] | 35.2" [894] | 133.8" [3397] | 35.7" [906] |



① VERTICAL SECTION



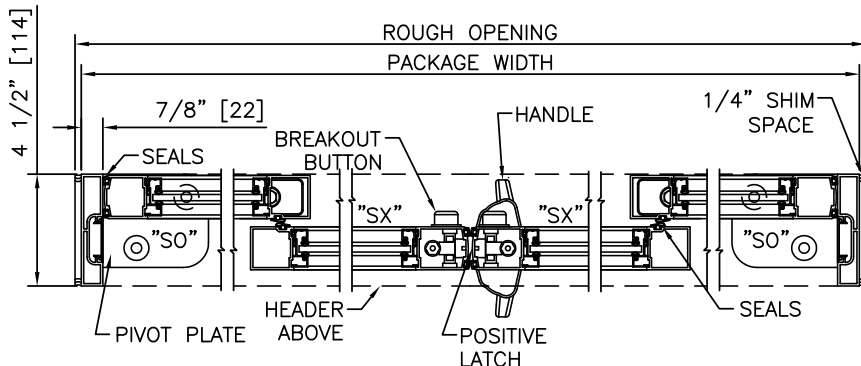
ELEVATION



PLAN

NOTES

1. CONNECTION TO BUILDING GROUND BY ELECTRICAL CONTRACTOR.
2. ROUGH OPENING SHALL PROVIDE 1/4" [6] SHIM SPACE ON SIDES AND TOP OF PACKAGE.
3. STANDARD PACKAGE INCLUDES POSITIVE LATCHING. LOCKING SYSTEMS AVAILABLE
4. PRODUCT IS CERTIFIED AS AN EFFECTIVE BARRIER AGAINST THE PASSAGE OF SMOKE IN ACCORDANCE WITH UL1784.
5. SEE SPECIFICATIONS FOR ADDITIONAL INFORMATION.



② HORIZONTAL SECTION

| TYPICAL PACKAGE DIMENSIONS (7/8" JAMBS) | | | | | |
|---|----------------------------|-----------------------------|-------------------------------|--------------------------------|-------------------------|
| PACKAGE WIDTH | NOMINAL CLEAR DOOR OPENING | SLIDING PANEL NOMINAL WIDTH | SIDELIGHT PANEL NOMINAL WIDTH | UTILITY BREAKOUT NOMINAL WIDTH | SWING OUT NOMINAL WIDTH |
| 84" [2134] | 35.1" [892] | 23.1" [586] | 20.2" [513] | 73.8" [1873] | 20.7" [525] |
| 96" [2438] | 41.1" [1045] | 26.1" [662] | 23.2" [589] | 85.8" [2178] | 23.7" [602] |
| 120" [3048] | 53.1" [1349] | 32.1" [814] | 29.2" [741] | 109.8" [2788] | 29.7" [754] |
| 144" [3658] | 65.1" [1654] | 38.1" [967] | 35.2" [894] | 133.8" [3397] | 35.7" [906] |