



March 1, 2023

**Mr. Leonard Pursell**

Stanley Access Technologies  
65 Scott Swamp Rd.  
Farmington, CT, 06032-2803,  
United States

**Object:** Project Summary for Verification Testing to ASTM E283 on the Procure™ 8500  
Series Isolation 3 Panel Sliding Door System  
Reference: Project 4790287892  
File: TM-00217-A1-Rev1

---

Mr. Pursell,

This letter will serve as a summary of the testing conducted on your (1) specimen in accordance to ASTM E283 standard that took place on April 15, 2022. The overall size of the specimen tested was 95-1/2" wide x 100-1/2" high. The test data for the specimen is included in Appendix A, photos are shown in Appendix B, and a drawing is shown in Appendix C.

UL Laboratory Canada Inc. did not select the samples, determine whether the samples were representative of production samples, witness the production of the test samples, or were we provided with information relative to the formulation or identification of component materials used in the test samples. The test results apply only to the actual sample tested.

Should you have any questions or comments concerning this summary, please feel free to contact the undersigned.

Very truly yours

Electronically signed by:

Haya Soghrati, B.Arch. Sc.  
Engineering Leader  
Toronto Laboratory Testing Services  
UL Laboratory Canada Inc.  
7 Underwriters Road,  
Toronto, ON

LABORATORY, FIELD TESTING AND ADVISORY SERVICES FOR THE BUILDING ENVELOPE  
125 YEARS STRONG, UL LABORATORY CANADA INC. SERVING CUSTOMERS ACROSS NORTH AMERICA

**MONTREAL**  
Canada Headquarters  
1320 Lionel-Boulet Blvd  
Varenes, QC J3X 1P7

**QUEBEC**  
420 Charest East Blvd  
Suite 300  
Quebec, QC G1K 8M4

**OTTAWA**  
29 Capital Drive  
Suite 200  
Ottawa, ON K2G 0E7

**TORONTO**  
7 Underwriters Road  
Toronto  
ON M1R 3A9

**1.0 Report Issued To:** Stanley Access Technologies  
65 Scott Swamp Rd.  
Farmington, CT, 06032-2803

**2.0 Test Laboratory:** UL LLC  
750 Anthony Trail  
Northbrook, Illinois 60062

**3.0 Project Summary:**

**3.1 Product Type:** Sliding Door

**3.2 Series/Model:** Procure™ 8500 Series Isolation  
3 Panel sliding ICU door with Staked breakout

**3.3 Compliance Statement:** Results obtained are tested values and were secured by using the designated test method(s). The summary of results is listed below.

**3.4 Test Date:** 04/15/2022

**3.5 Test Location:** UL LLC, 750 Anthony Trail, Northbrook, IL. 60062

**3.6 Test Sample Source:** The test specimen was provided by the client.

**4.0 Revisions:**

<b>Rev. #</b>	<b>Date</b>	<b>Page(s)</b>	<b>Revision(s)</b>
Rev.1	March 1, 2023	3	Air leakage values were revised to reflect the correct conversions.

## APPENDIX A

Specimen TF-00217-A: Sliding Door sized 95.5" wide x 100.5" high.

April 15<sup>th</sup>, 2022 (Without artificial bottom seal)

Title of Test	Results
<b>Air Leakage</b> <i>ASTM E283/E283M-19</i> At 75 Pa (1.57 psf)	19.66 L/s·m <sup>2</sup> (3.87 cfm/ft <sup>2</sup> )

April 15<sup>th</sup>, 2022 (Without artificial bottom seal)

Title of Test	Results
<b>Air Leakage</b> <i>ASTM E283/E283M-19</i> At 12 Pa (0.25 psf)	6.91 L/s·m <sup>2</sup> (1.36 cfm/ft <sup>2</sup> )
<b>Air Leakage</b> <i>ASTM E283/E283M-19</i> At 25 Pa (0.52 psf)	9.60 L/s·m <sup>2</sup> (1.89 cfm/ft <sup>2</sup> )
<b>Air Leakage</b> <i>ASTM E283/E283M-19</i> At 50 Pa (1.04 psf)	15.19 L/s·m <sup>2</sup> (2.99 cfm/ft <sup>2</sup> )
<b>Air Leakage</b> <i>ASTM E283/E283M-19</i> At 75 Pa (1.57 psf)	19.66 L/s·m <sup>2</sup> (3.87 cfm/ft <sup>2</sup> )

April 15<sup>th</sup>, 2022 (With artificial bottom seal)

Title of Test	Results
<b>Air Leakage</b> <i>ASTM E283/E283M-19</i> At 75 Pa (1.57 psf)	13.94 L/s·m <sup>2</sup> (2.74 cfm/ft <sup>2</sup> )

April 15<sup>th</sup>, 2022 (With artificial bottom seal)

Title of Test	Results
<b>Air Leakage</b> <i>ASTM E283/E283M-19</i> At 12 Pa (0.25 psf)	4.84 L/s·m <sup>2</sup> (0.95 cfm/ft <sup>2</sup> )
<b>Air Leakage</b> <i>ASTM E283/E283M-19</i> At 25 Pa (0.52 psf)	7.22 L/s·m <sup>2</sup> (1.42 cfm/ft <sup>2</sup> )
<b>Air Leakage</b> <i>ASTM E283/E283M-19</i>	10.18 L/s·m <sup>2</sup> (2.00 cfm/ft <sup>2</sup> )

At 50 Pa (1.04 psf)	
<b>Air Leakage</b> ASTM E283/E283M-19 At 75 Pa (1.57 psf)	13.94 L/s·m <sup>2</sup> (2.74 cfm/ft <sup>2</sup> )

## APPENDIX B

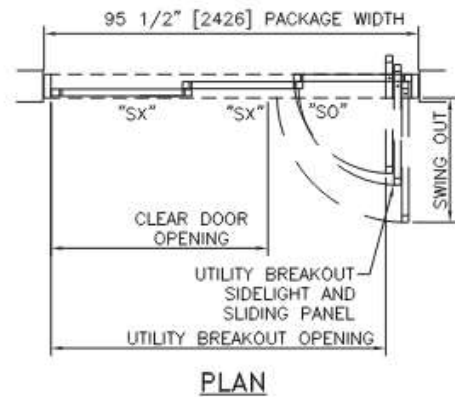
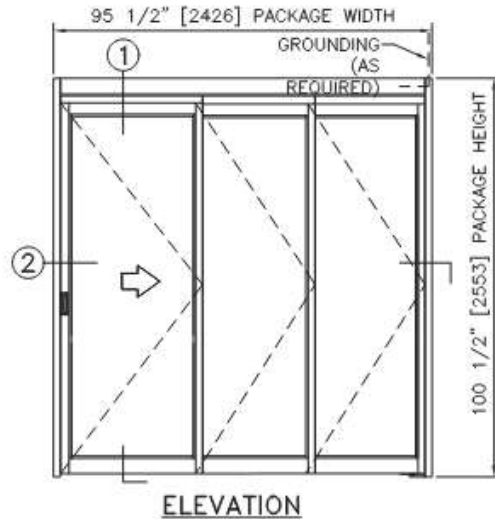
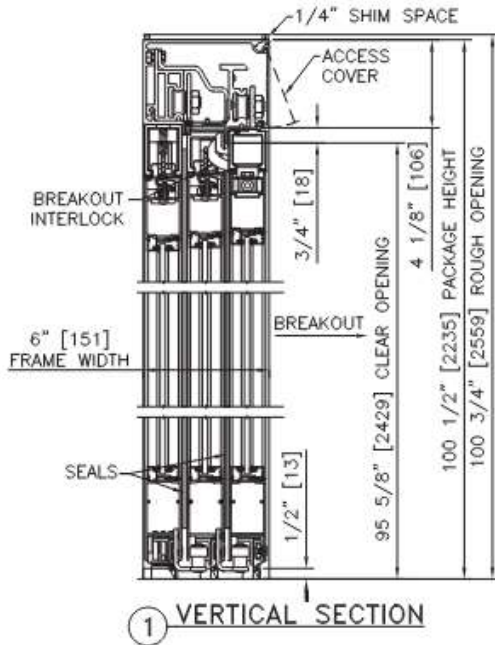


## APPENDIX C



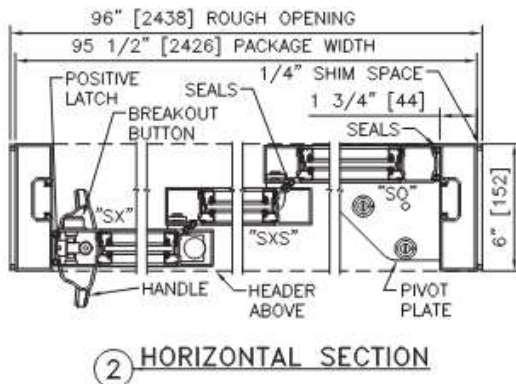
# PROCARE™ 8500 SERIES ISOLATION

SINGLE SLIDE RIGHT HAND TRACKLESS, SMOKE & DRAFT, ISOLATION, MANUAL	
PROJECT INFORMATION	
PROJECT NAME: UL1784/ISOLATION TESTING	
LOCATION:	
DOOR NUMBER(S): TYPICAL	
DATE: 02/22/2022	SHEET: 1 OF 1



**NOTES**

- ELECTRICAL REQUIREMENTS: BY ELECTRICAL CONTRACTOR.
  - CONNECTION TO BUILDING GROUND; AS REQUIRED.
- ROUGH OPENING SHALL PROVIDE 1/4" [6] SHIM SPACE ON SIDES AND TOP OF PACKAGE.
- STANDARD PACKAGE INCLUDES POSITIVE LATCHING. LOCKING SYSTEMS AVAILABLE.
- SLIDING PANELS MUST BE DRIVEN TO FULL OPEN POSITION AND ENGAGE FLOOR MOUNTED HINGE PINS PRIOR TO PANEL BREAKOUT.
- PRODUCT IS CERTIFIED AS AN EFFECTIVE BARRIER AGAINST THE PASSAGE OF SMOKE IN ACCORDANCE WITH UL1784 AND NFPA 105.
- PRODUCT IS LEAKAGE RATED, DESIGNED AND TESTED FOR USE IN ALL ROOMS
- SEE SPECIFICATIONS FOR ADDITIONAL INFORMATION.



TYPICAL PACKAGE DIMENSIONS						
PACKAGE WIDTH	NOMINAL CLEAR DOOR OPENING	SLIDING DOOR NOMINAL WIDTH	SLIDING DOOR NOMINAL WIDTH	SIDELIGHT NOMINAL WIDTH	UTILITY BREAKOUT NOMINAL WIDTH	SWING OUT NOMINAL WIDTH
95.5" [2426]	55.3" [1404]	35.8" [910]	30.4" [773]	29.9" [760]	85.5" [2172]	33.8" [859]